

# API 610 & API 674

Vertical Turbine Pumps, Horizontal Split Case Pumps  
and Reciprocating Pumps



## API 610 & API 674 Pumps from Pentair

Pentair's Fairbanks Nijhuis™ API 610 Split Case and Turbine pumps, Myers® and Myers® Apex Series API 674 reciprocating pumps are efficient, rugged and reliable. Pumping everything from NGL to heavy crude, these pumps provide excellent service in critical applications. With over 125 years of pump manufacturing experience, the Fairbanks Nijhuis API 610 pumps are built for your specific application.

### API 610

#### Vertical Turbine Pumps

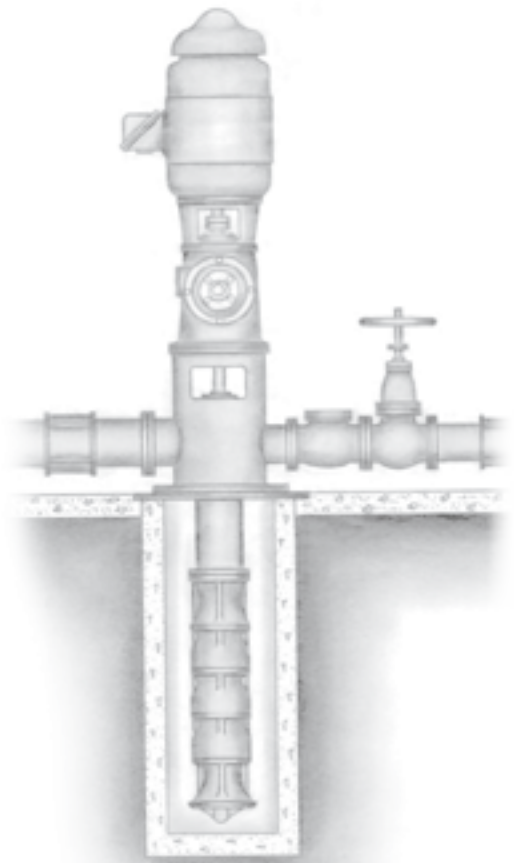
Vertical Turbines are available as product lubricated, with or without suction cans, L or T heads. Flows are up to 50,000 GPM and pressures as required by the application.

#### Applications include:

- Barge stripping
- Oil transfer pumps
- Cooling tower service
- Pipeline pumps
- NPSHa solution
- Fire pumps

#### Features:

- Application specific bearing spacing based upon RPM
- Flanged column connections
- Flanged bowl connections
- Keyed impeller option
- 1/8" corrosion allowance on pressure retaining parts
- Keyed line shaft option
- Mechanical seal plans as required
- Self-priming



# Pump Offering

## API 610

### Split Case Pumps

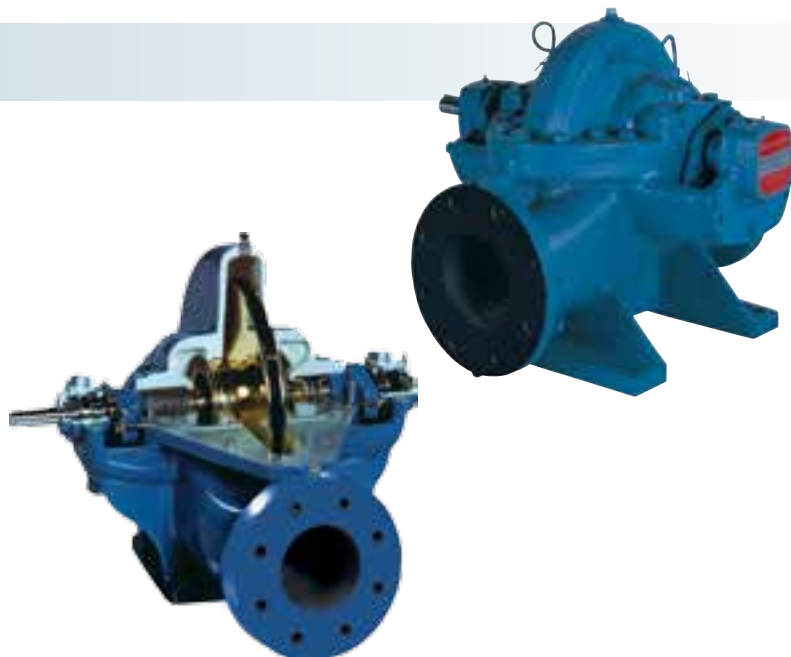
Horizontal split case pumps provide an economical, easily maintained solution for many API 610 applications. Flow ranges as large as necessary.

#### Applications include:

- Tank loading
- Truck loading
- Terminal
- Pipeline service
- Cooling towers
- Fluid transfer

#### Features:

- Rigid shafts
- Short bearing spans
- Double suction
- Low axial thrust
- 1/8" corrosion allowance



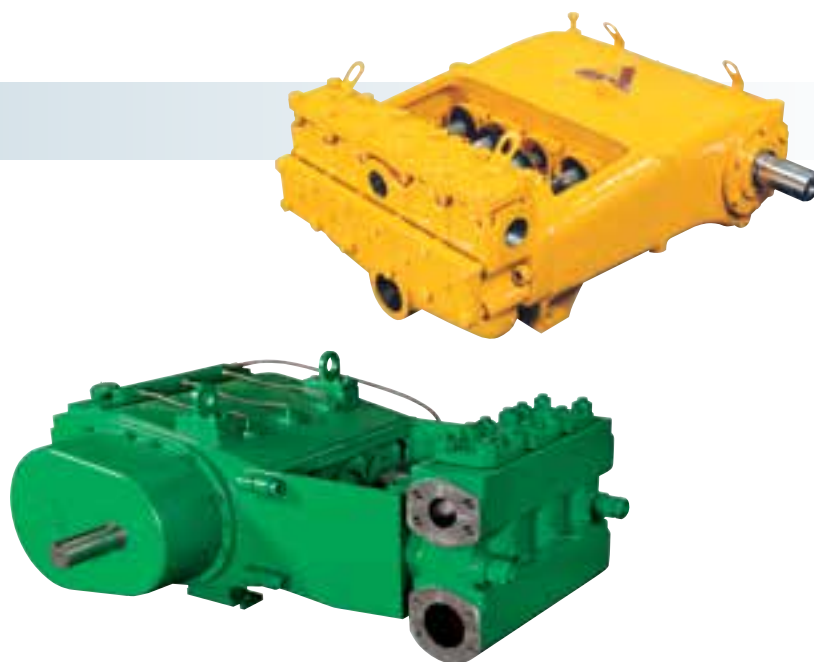
## API 674

### Reciprocating Pumps

Myers® and Myers® Apex Series API 674 compliant reciprocating pumps provide high pressure transfer of fluids with high efficiency.

#### Features:

- High efficiency
- 1 shift maintenance of expendables
- Ease of maintenance-complete disassembly without disturbing driver
- Easy valve replacement
- Optional materials customize pumps to specific application for longevity



Designed to meet the intent of American Petroleum Institute standards, Pentair manufactures high quality, reliable products applicable for API 610 and API 674 services.

Years of field proven performance with our vertical turbine, horizontal split-case, and reciprocating pumps provide the industry with some of the best pumps available.

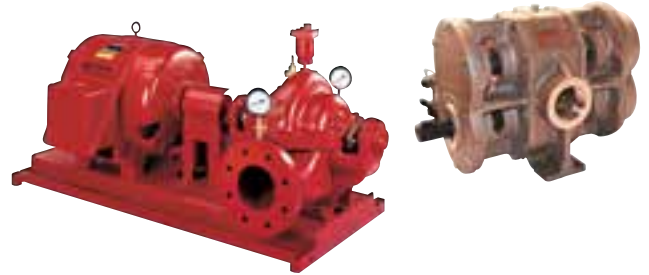
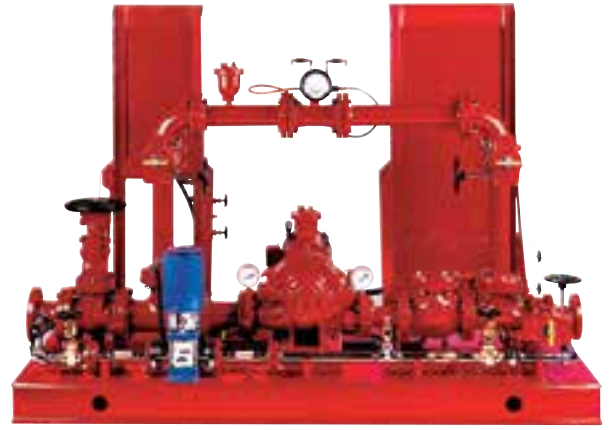
Engineered to match performance needs and operating conditions, you can be assured your Pentair pump will be the right fit for the job, every time.

# Fire Pumps

## Pentair Offers a Complete Line of Listed and Non-Listed Fire Protection Pumps

From individual pumps to complete systems that meet your fire protection needs: Vertical Inline, Horizontal Split-Case, Vertical Turbine, Foam and Mist pumps.

Offering both electric and diesel drives, we can also supply complete packaged systems to custom fit your requirements.



**From natural gas liquid to heavy crude, Pentair is by your side and can support the ever-growing needs of this exciting market. The next time you're in need of a pump for your API 610 or API 674, think Pentair.**

For more information on Pentair's wide range of products, please visit the following websites:

[www.AuroraPump.com](http://www.AuroraPump.com) | [www.FairbanksNijhuis.com](http://www.FairbanksNijhuis.com) | [www.femyers.com](http://www.femyers.com)



NORTH AURORA FACILITY  
800 AIRPORT ROAD  
NORTH AURORA, ILLINOIS 60542  
630-859-7000  
FAX: 630-859-7060

KANSAS CITY FACILITY  
3601 FAIRBANKS AVENUE  
KANSAS CITY, KANSAS 66106  
913-371-5000  
FAX: 913-748-4025

ASHLAND FACILITY  
1101 MYERS PARKWAY  
ASHLAND, OHIO 44805  
419-289-1144  
FAX: 419-281-9980

THE NETHERLANDS  
NIJHUIS POMPEN BV  
PARALLELWEG 4  
7102 DE WINTERSWIJK  
T +31 (0)543 547474

Because we are continuously improving our products and services, Pentair reserves the right to change specifications without prior notice.  
K4671 02/10/14 © 2014 Pentair Ltd. All Rights Reserved.