

VERTICAL TURBINE

Date **April 2006**

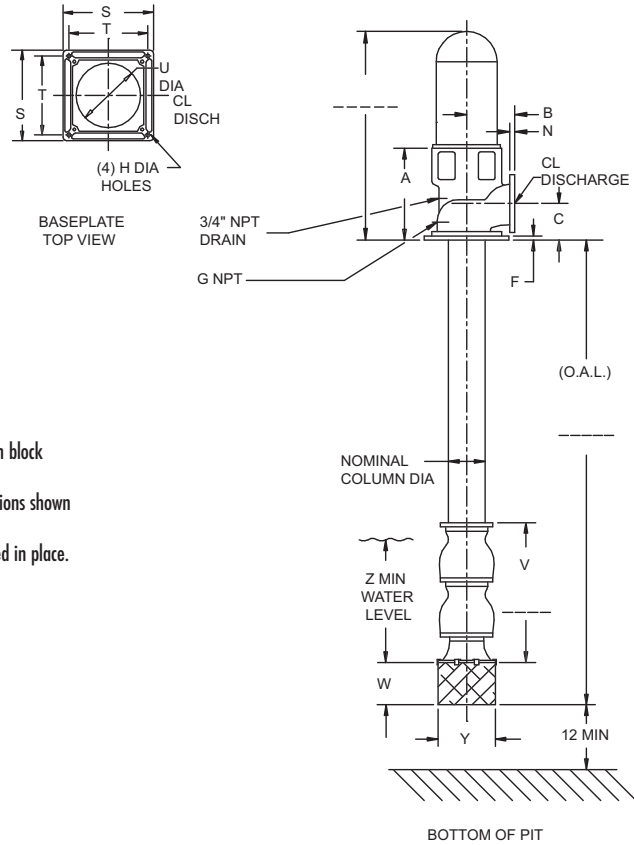
Use the following table to determine which discharge head should be used on vertical turbine fire pumps. Both style discharge heads are shown on the setting plans where applicable.

Rated Capacity (GPM)	Bowl Design	Discharge Head Design		
		100-175 PSI Working Pressure		176-300 PSI Working Pressure
		U.L. Listed	FM Approved	U.L. Listed or FM Approved
250	10 M	16-1/2 x 6 SDC	16-1/2 x 6 SDC	16-1/2 x 6 LAD
300	10 M	16-1/2 x 6 SDC	16-1/2 x 6 SDC	16-1/2 x 6 LAD
400	10 M	16-1/2 x 6 SDC	16-1/2 x 6 SDC	16-1/2 x 6 LAD
500	11 M	16-1/2 x 6 LAD	16-1/2 x 6 LAD	16-1/2 x 6 LAD
750	12 M	16-1/2 x 6 LAD	16-1/2 x 6 LAD	16-1/2 x 6 LAD
750	14 M	16-1/2 x 8 SDC	16-1/2 x 8 SDC	16-1/2 x 8 LAD
1000	12 M	16-1/2 x 6 LAD	16-1/2 x 6 LAD	16-1/2 x 6 LAD
1000	14 M	16-1/2 x 8 SDC	16-1/2 x 8 SDC	16-1/2 x 8 LAD
1250	13 H	16-1/2 x 8 SDC	16-1/2 x 8 SDC	16-1/2 x 8 LAD
1500	13 H	16-1/2 x 8 SDC	16-1/2 x 8 SDC	16-1/2 x 8 LAD
1500	15 H	20 x 10 LAD	20 x 10 LAD	20 x 10 LAD
2000	15 H	20 x 10 LAD	20 x 10 LAD	20 x 10 LAD
2000	17 M	20 x 10 LAD	20 x 10 LAD	20 x 10 LAD
2500	15 H	20 x 10 LAD	20 x 10 LAD	20 x 10 LAD
3000	17H	24-1/2 x 12LS	24-1/2 x 12LS	24-1/2 x 12 LS
3000	19 A	24-1/2 x 12 SDH	24-1/2 x 12 SDH	24-1/2 x 12 SDH
3500	19 A	24-1/2 x 12 SDH	24-1/2 x 12 SDH	24-1/2 x 12 SDH
4000	19 B	24-1/2 x 12 SDH	24-1/2 x 12 SDH	24-1/2 x 12 SDH
4500	19 B	24-1/2 x 12 SDH	24-1/2 x 12 SDH	24-1/2 x 12 SDH



FAIRBANKS NIJHUIS™ FIRE PUMPS

ELECTRIC DRIVEN VERTICAL TURBINE



NOTES

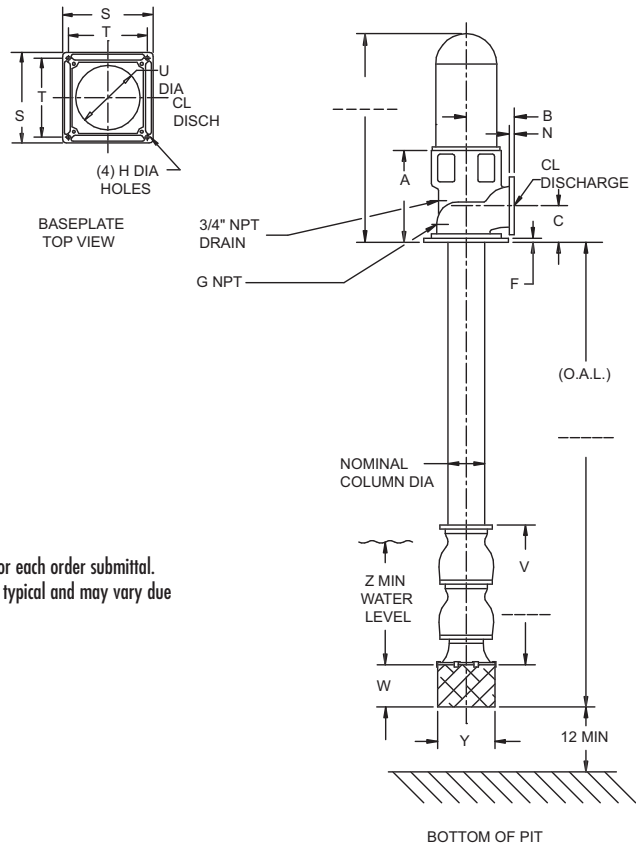
1. Flange ratings are either 125# or 250# and will be designated in the certification block below for each order submittal.
2. Not for construction, installation, or application purposes unless certified. Dimensions shown are typical and may vary due to various tolerances.
3. All bases are designed to have full contact with either grout or a soleplate grouted in place.
4. Limited to maximum working pressure of 175 PSI.
5. For 250 GPM Z = 21". For 300 GPM and 400 GPM Z = 24".

BOWL ASSEMBLY, COLUMN & SHAFTING								
Size & Model	# of Stages	Nominal Column Dia.		V		W	Y	Z
		UL & FM Water Lube Only	All Others	UL & FM Water Lube Only	All Others			
10 M	4	6	6	41	41	6	10	(5)
	Total Stages		Add 8.25 for each additional stage over 4 stages					
11 M	4	6	8	44-13/16	47-9/16	9	11-1/2	34
	Total Stages		Add 9-1/2 for each additional stage over 4 stages					
12 M	3	8	8	40	42-3/4	7	13	34
	Total Stages		Add 10-3/4 for each additional stage over 3 stages					

DISCHARGE HEADS & BASEPLATES											
Size		A	B	C	F	G	H	N	S	T	U
12	6 SDH	20	11-1/2	7	1	3/4	1	1-3/8	21-1/2	17-5/32	14-1/2
16-1/2	6 SDC	23	11-3/8	10	1-1/2	1	7/8	1-1/16	24	21	17-1/8
16-1/2	6 LAD	23	10-1/4	10	1-1/2	1	7/8	1-1/16	24	21	17-1/8
16-1/2	6 SDH	20	11-1/2	7	1	3/4	1	1-3/8	21-1/2	17-5/32	14-1/2

(4)

Customer:				P.O.#:				Dwg.#			
Job Name:						<input type="checkbox"/> UL <input type="checkbox"/> FM <input type="checkbox"/> CUL			Flange Rating: <input type="checkbox"/> 125# <input type="checkbox"/> 250#		
Model:		# Stages:		GPM:		PSI:		Max. Lift:			
Motor Mfg.:		HP:	Frame:		Ph:	Hz:	V:	Encl.:			
Certified By:					Date:						



NOTES

1. Flange ratings are either 125# or 250# and will be designated in the certification block below for each order submittal.
2. Not for construction, installation, or application purposes unless certified. Dimensions shown are typical and may vary due to various tolerances.
3. All bases are designed to have full contact with either grout or a soleplate grouted in place.
4. Limited to maximum working pressure of 175 PSI.

BOWL ASSEMBLY, COLUMN & SHAFTING								
Size & Model	# of Stages	Nominal Column Dia.		V		W	Y	Z
		UL & FM Water Lube Only	All Others	UL & FM Water Lube Only	All Others			
13 H	4	8	10	61-13/16	65-1/4	11	13	34
	Total Stages		Add 13-1/16 for each additional stage over 4 stages					
14 M	3	8	10	44-15/16	49-1/4	13	14-3/4	30
	Total Stages		Add 12-3/16 for each additional stage over 3 stages					
15 H	3	10	12	54-1/16	57-7/16	13	14-3/4	34 - 2000 GPM 46 - 2500 GPM
	Total Stages		Add 14-1/2 for each additional stage over 3 stages					

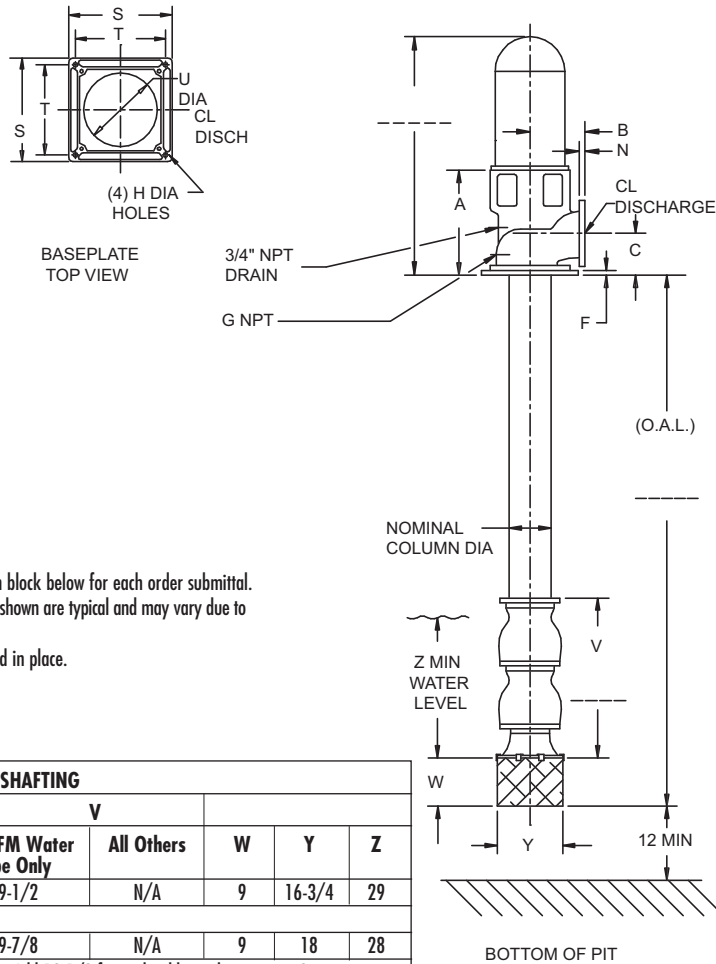
DISCHARGE HEADS & BASEPLATES											
Size											
BD	DISCH	A	B	C	F	G	H	N	S	T	U
16-1/2	8 SDH	23	11-3/8	10	1-1/2	1	7/8	1-3/16	24	21	17-1/8
16-1/2	8 LAD	23	11-3/8	10	1-1/2	1	7/8	1-3/16	24	21	17-1/8
20	10 LAD	23	13-7/8	10-1/2	1-1/2	1	7/8	1-1/4	24	21	17-1/8

Customer:				P.O.#:				Dwg.#			
Job Name:						<input type="checkbox"/> UL <input type="checkbox"/> FM <input type="checkbox"/> CUL			Flange Rating: <input type="checkbox"/> 125# <input type="checkbox"/> 250#		
Model:			# Stages:			GPM:		PSI:		Max. Lift:	
Motor Mfg.:			HP:		Frame:		Ph:	Hz:	V:	End.:	
Certified By:						Date:					



FAIRBANKS NIJHUIS™ FIRE PUMPS

ELECTRIC DRIVEN VERTICAL TURBINE



NOTES

1. Flange ratings are either 125# or 250# and will be designated in the certification block below for each order submittal.
2. Not for construction, installation, or application purposes unless certified. Dimensions shown are typical and may vary due to various tolerances.
3. All bases are designed to have full contact with either grout or a soleplate grouted in place.

BOWL ASSEMBLY, COLUMN & SHAFTING								
Size & Model	# of Stages	Nominal Column Dia.		V		W	Y	Z
		UL & FM Water Lube Only	All Others	UL & FM Water Lube Only	All Others			
17 H	3	12	N/A	59-1/2	N/A	9	16-3/4	29
	Total Stages							
17 M	3	12	N/A	49-7/8	N/A	9	18	28
	Total Stages				Add 13-1/2 for each additional stage over 3 stages			
19 A	2	12	N/A	47-5/8	N/A	12	23-1/2	32
	Total Stages				Add 17-5/8 for each additional stage over 2 stages			
19 B	2	12	N/A	47-5/8	N/A	12	23-1/2	32
	Total Stages				Add 17-5/8 for each additional stage over 2 stages			

DISCHARGE HEADS & BASEPLATES											
Size		A	B	C	F	G	H	N	S	T	U
BD	DISCH										
20	10 LAD	23	13-7/8	10-1/2	1-1/2	1	7/8	1-1/4	24	21	19
24-1/2	12 SDH	28	17	13-1/2	2	3/4	1-1/8	1-7/8	32-1/2	26-5/32	24-1/2

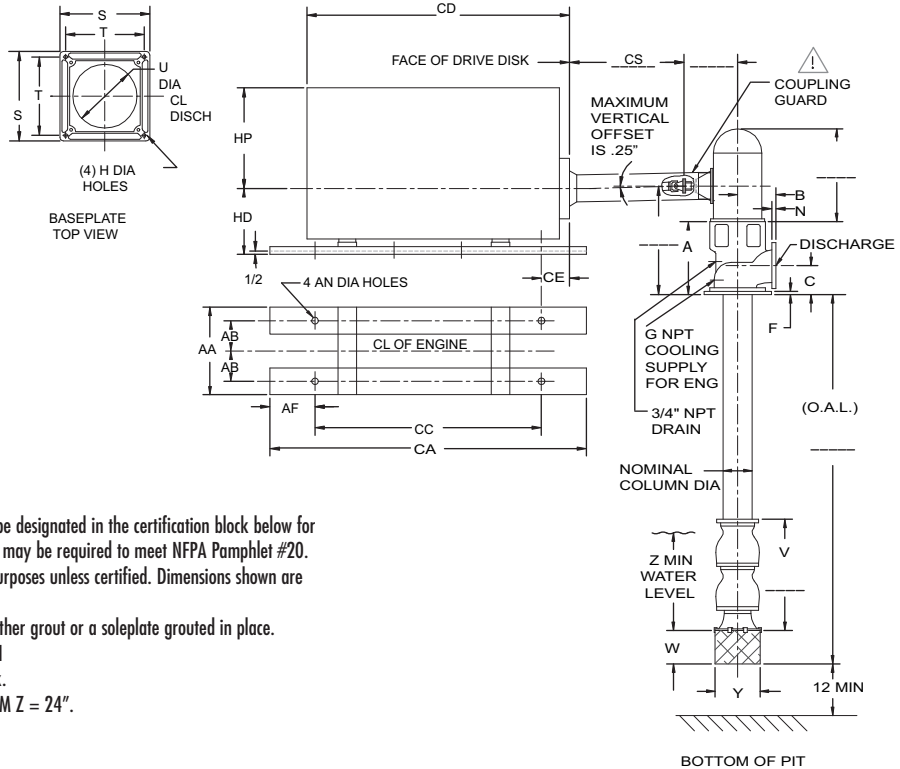
Customer:				P.O.#:				Dwg.#			
Job Name:						<input type="checkbox"/> UL <input type="checkbox"/> FM <input type="checkbox"/> CUL			Flange Rating: <input type="checkbox"/> 125# <input type="checkbox"/> 250#		
Model:		# Stages:		GPM:		PSI:		Max. Lift:			
Motor Mfg.:		HP:	Frame:		Ph:	Hz:	V:	Encl.:			
Certified By:				Date:							

DIESEL DRIVEN VERTICAL TURBINE

Date **September 2011**

Supersedes Section 914 Page 205

Dated April 2006



GEAR		
Mfg.	Ratio	Model

NOTES

1. Flange ratings are either 125# or 250# and will be designated in the certification block below for each order submittal. Reducers and/or increasers may be required to meet NFPA Pamphlet #20.
2. Not for construction, installation, or application purposes unless certified. Dimensions shown are typical and may vary due to various tolerances.
3. All bases are designed to have full contact with either grout or a soleplate grouted in place.
4. Limited to maximum working pressure of 175 PSI
5. CD, CE & CS are dimensioned to face of drive disk.
6. For 250 GPM Z = 21". For 300 GPM and 400 GPM Z = 24".

BOWL ASSEMBLY, COLUMN & SHAFTING								
Size & Model	# of Stages	Nominal Column Dia.		V		W	Y	Z
		UL & FM Water Lube Only	All Others	UL & FM Water Lube Only	All Others			
10 M	4	6	6	41	41	6	10	(6)
	Total Stages		Add 8-1/4 for each additional stage over 4 stages					
11 M	4	6	8	44-13/16	47-9/16	9	11-1/2	34
	Total Stages		Add 9-1/2 for each additional stage over 4 stages					

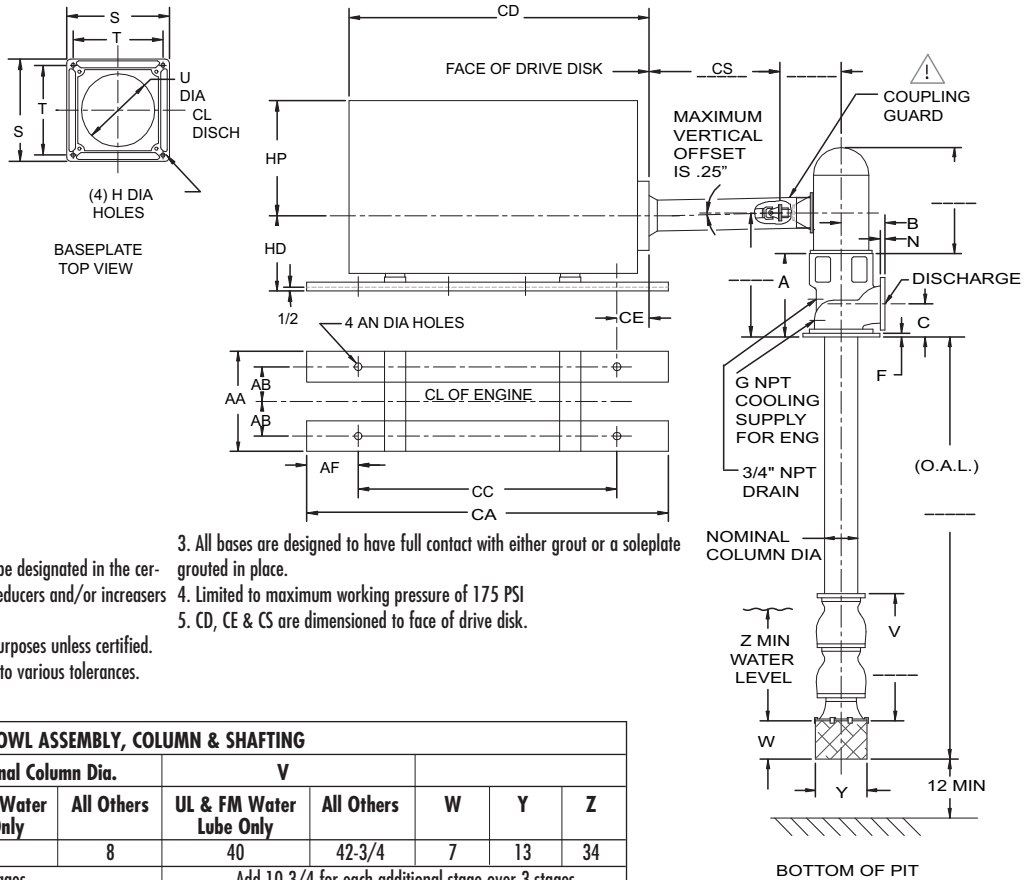
DISCHARGE HEADS & BASEPLATES											
Size		A	B	C	F	G	H	N	S	T	U
16-1/2	6 SDC	23	11-3/8	10	1-1/2	1	7/8	1-1/16	24	21	17-1/8
16-1/2	6 LAD	23	10-1/4	10	1-1/2	1	7/8	1-1/16	24	21	17-1/8

CLARKE JU4H DIESEL ENGINES												
MODEL	AA	AB	AF	AN	CA	CB	CC	CD	CE	CS	HD	HP
JU4HUF10	32	15	5	1 x 2	40	N/A	30	35.75	2.26	10	20.25	40.5
JU4HUF20	32	15	5	1 x 2	40	N/A	30	35.75	2.26	10	20.25	40.5
JU4HUF30	32	15	5	1 x 2	40	N/A	30	35.75	2.26	10.5	20.25	45
JU4HUF40	32	15	5	1 x 2	40	N/A	30	35.75	2.26	10.5	20.25	45

Customer:				P.O.#:				Dwg.#			
Job Name:						<input type="checkbox"/> UL <input type="checkbox"/> FM <input type="checkbox"/> CUL			Flange Rating: <input type="checkbox"/> 125# <input type="checkbox"/> 250#		
Model:			# Stages:			GPM:		PSI:		Max. Lift:	
Engine Mfg.:			Engine Model:			RPM:		HP:			
Certified By:					Date:						

FAIRBANKS NIJHUIS™ FIRE PUMPS

DIESEL DRIVEN VERTICAL TURBINE



GEAR		
Mfg.	Ratio	Model

NOTES

1. Flange ratings are either 125# or 250# and will be designated in the certification block below for each order submittal. Reducers and/or increasers may be required to meet NFPA Pamphlet #20.
2. Not for construction, installation, or application purposes unless certified. Dimensions shown are typical and may vary due to various tolerances.
3. All bases are designed to have full contact with either grout or a soleplate grouted in place.
4. Limited to maximum working pressure of 175 PSI
5. CD, CE & CS are dimensioned to face of drive disk.

BOWL ASSEMBLY, COLUMN & SHAFTING								
Size & Model	# of Stages	Nominal Column Dia.		V		W	Y	Z
		UL & FM Water Lube Only	All Others	UL & FM Water Lube Only	All Others			
12 M	3	8	8	40	42-3/4	7	13	34
	Total Stages		Add 10-3/4 for each additional stage over 3 stages					
13 H	4	8	10	61-13/16	65-1/4	11	13	34
	Total Stages		Add 13-1/16 for each additional stage over 4 stages					

DISCHARGE HEADS & BASEPLATES											
Size		A	B	C	F	G	H	N	S	T	U
BD	DISCH										
12	6 SDH	23	11-1/2	8-1/2	1-1/2	3/4	1	1-3/8	21-1/4	17-5/32	14-1/2
16-1/2	8 SDC	23	11-3/8	10	1-1/2	1	7/8	1-3/16	24	21	17-1/8
16-1/2	8 LAD	23	11-3/8	10	1-1/2	1	7/8	1-3/16	24	21	17-1/8
16-1/2	6 LAD	23	10-1/4	10	1-1/2	1	7/8	1-1/16	24	21	17-1/8
16-1/2	6 SDH	21-1/2	11-1/2	8-1/2	1-1/2	3/4	1	1-3/8	21-1/4	17-5/32	14-1/2

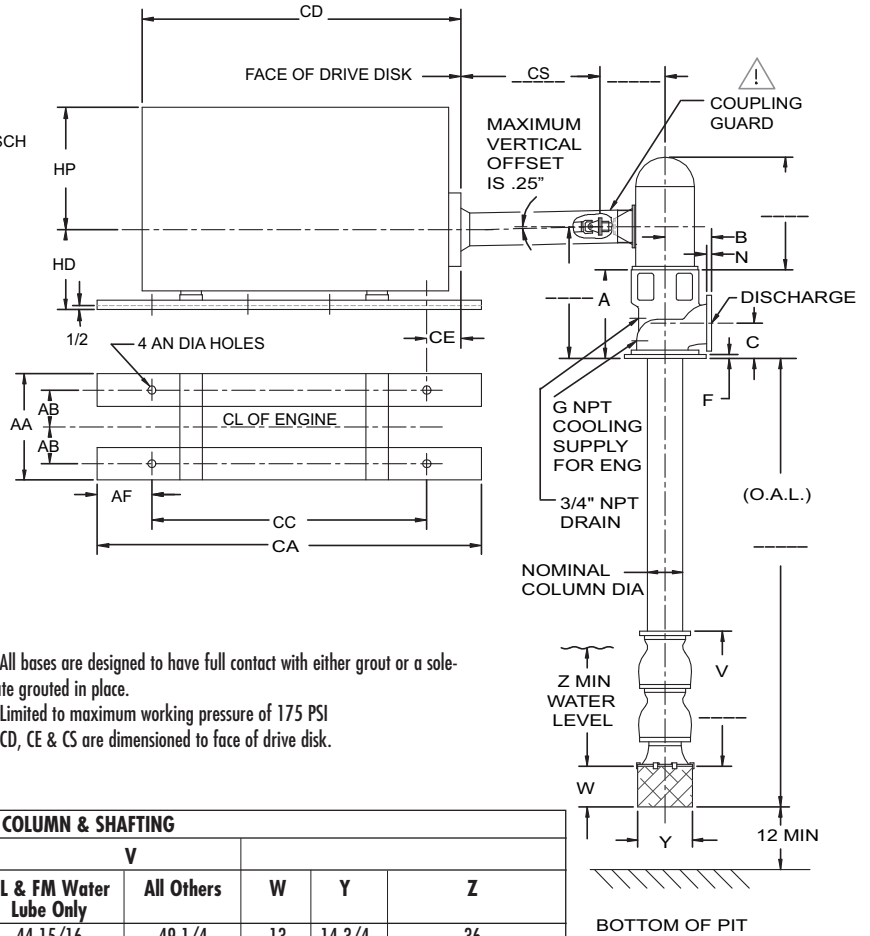
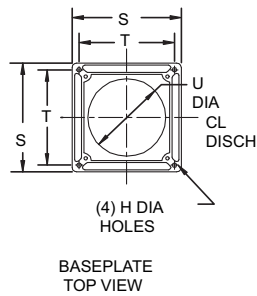
CLARKE JU4H DIESEL ENGINES												
MODEL	AA	AB	AF	AN	CA	CB	CC	CD	CE	CS	HD	HP
JU4HUF10	32	15	5	1 x 2	40	N/A	30	35.75	2.26	10	20.25	40.5
JU4HUF20	32	15	5	1 x 2	40	N/A	30	35.75	2.26	10	20.25	40.5
JU4HUF30	32	15	5	1 x 2	40	N/A	30	35.75	2.26	10.5	20.25	45
JU4HUF40	32	15	5	1 x 2	40	N/A	30	35.75	2.26	10.5	20.25	45
JU4HUF50	32	15	5	1 x 2	40	N/A	30	35.75	2.26	15.2	20.25	45

Customer:				P.O.#:				Dwg.#				
Job Name:				<input type="checkbox"/> UL <input type="checkbox"/> FM <input type="checkbox"/> CUL				Flange Rating: <input type="checkbox"/> 125# <input type="checkbox"/> 250#				
Model:			# Stages:			GPM:			PSI:		Max. Lift:	
Engine Mfg.:			Engine Model:			RPM:			HP:			
Certified By:				Date:								

Diesel Driven Vertical Turbine

Date **September 2011**

Supersedes Section 914 Page 207



GEAR		
Mfg.	Ratio	Model

NOTES

1. Flange ratings are either 125# or 250# and will be designated in the certification block below for each order submittal. Reducers and/or increasers may be required to meet NFPA Pamphlet #20.
2. Not for construction, installation, or application purposes unless certified. Dimensions shown are typical and may vary due to various tolerances.
3. All bases are designed to have full contact with either grout or a sole-plate grouted in place.
4. Limited to maximum working pressure of 175 PSI
5. CD, CE & CS are dimensioned to face of drive disk.

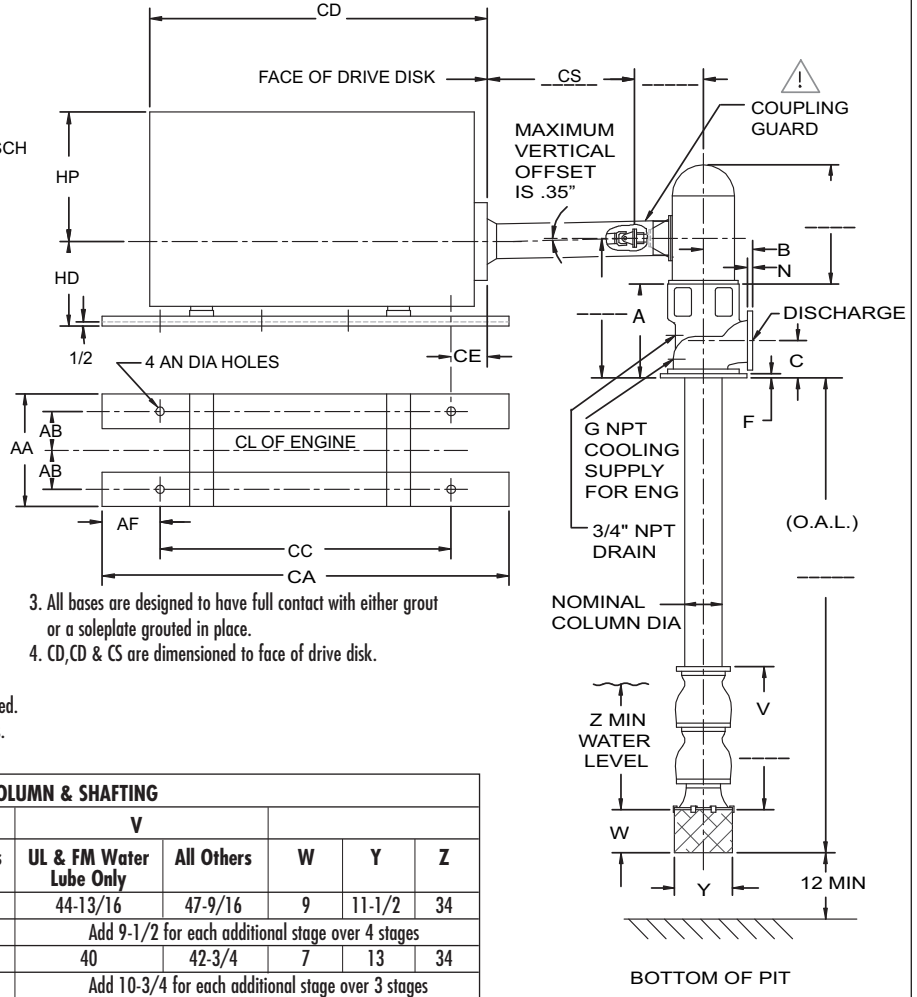
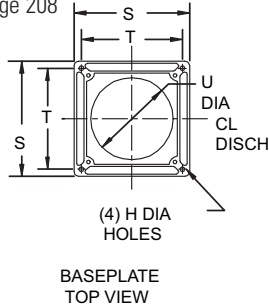
BOWL ASSEMBLY, COLUMN & SHAFTING								
Size & Model	# of Stages	Nominal Column Dia.		V		W	Y	Z
		UL & FM Water Lube Only	All Others	UL & FM Water Lube Only	All Others			
14 M	3	8	10	44-15/16	49-1/4	13	14-3/4	36
	Total Stages		Add 12-3/16 for each additional stage over 3 stages					
15 H	3	10	12	54-1/16	57-7/16	13	14-3/4	34 - 2000 GPM 46 - 2500 GPM
	Total Stages		Add 14-1/2 for each additional stage over 3 stages					

DISCHARGE HEADS & BASEPLATES											
Size		A	B	C	F	G	H	N	S	T	U
16-1/2	8 SDC	23	11-3/8	10	1-1/2	1	7/8	1-3/16	24	21	17-1/8
16-1/2	8 LAD	23	11-3/8	10	1-1/2	1	7/8	1-3/16	24	21	17-1/8
20	10 LAD	23	13-7/8	10-1/2	1-1/2	1	7/8	1-1/4	24	21	17-1/8

CLARKE JU4H DIESEL ENGINES												
MODEL	AA	AB	AF	AN	CA	CB	CC	CD	CE	CS	HD	HP
JU4HUF40	32	15	5	1 x 2	40	N/A	30	35.75	2.26	10.5	20.25	45
JU4HUF50	32	15	5	1 x 2	40	N/A	30	35.75	2.26	15.2	20.25	45

Customer:				P.O.#:				Dwg.#			
Job Name:						<input type="checkbox"/> UL <input type="checkbox"/> FM <input type="checkbox"/> CUL			Flange Rating: <input type="checkbox"/> 125# <input type="checkbox"/> 250#		
Model:			# Stages:			GPM:		PSI:		Max. Lift:	
Engine Mfg.:				Engine Model:			RPM:		HP:		
Certified By:					Date:						

DIESEL DRIVEN VERTICAL TURBINE



- All bases are designed to have full contact with either grout or a soleplate grouted in place.
- CD, CD & CS are dimensioned to face of drive disk.

GEAR		
Mfg.	Ratio	Model

- NOTES**
- Flange ratings are either 125# or 250# and will be designated in the certification block below for each order submittal. Reducers and/or increasers may be required to meet NFPA Pamphlet #20.
 - Not for construction, installation, or application purposes unless certified. Dimensions shown are typical and may vary due to various tolerances.

BOWL ASSEMBLY, COLUMN & SHAFTING								
Size & Model	# of Stages	Nominal Column Dia.		V		W	Y	Z
		UL & FM Water Lube Only	All Others	UL & FM Water Lube Only	All Others			
11 M	4	6	8	44-13/16	47-9/16	9	11-1/2	34
	Total Stages		Add 9-1/2 for each additional stage over 4 stages					
12 M	3	8	8	40	42-3/4	7	13	34
	Total Stages		Add 10-3/4 for each additional stage over 3 stages					

DISCHARGE HEADS & BASEPLATES											
Size		A	B	C	F	G	H	N	S	T	U
BD	DISCH										
12	6 SDH	23	11-1/2	8-1/2	1-1/2	3/4	1	1-3/8	21-1/4	17-5/32	14-1/2
16-1/2	6 LAD	23	10-1/4	10	1-1/2	1	7/8	1-1/16	24	21	17-1/8

CLARKE JU6H DIESEL ENGINES												
MODEL	AA	AB	AF	AN	CA	CB	CC	CD	CE	CS	HD	HP
JU6HUF30	32	15	5	1 x 2	46	N/A	36	45.9	.88	15.2	20.35	45.8
JU6HUF50	32	15	5	1 x 2	46	N/A	36	45.9	.88	15.2	20.35	45.8
JU6HUF60	32	15	5	1 x 2	46	N/A	36	48	.88	15.2	20.35	45.8

Customer:				P.O.#:				Dwg.#			
Job Name:				<input type="checkbox"/> UL <input type="checkbox"/> FM <input type="checkbox"/> CUL				Flange Rating: <input type="checkbox"/> 125# <input type="checkbox"/> 250#			
Model:		# Stages:		GPM:		PSI:		Max. Lift:			
Engine Mfg.:		Engine Model:		RPM:		HP:					
Certified By:				Date:							

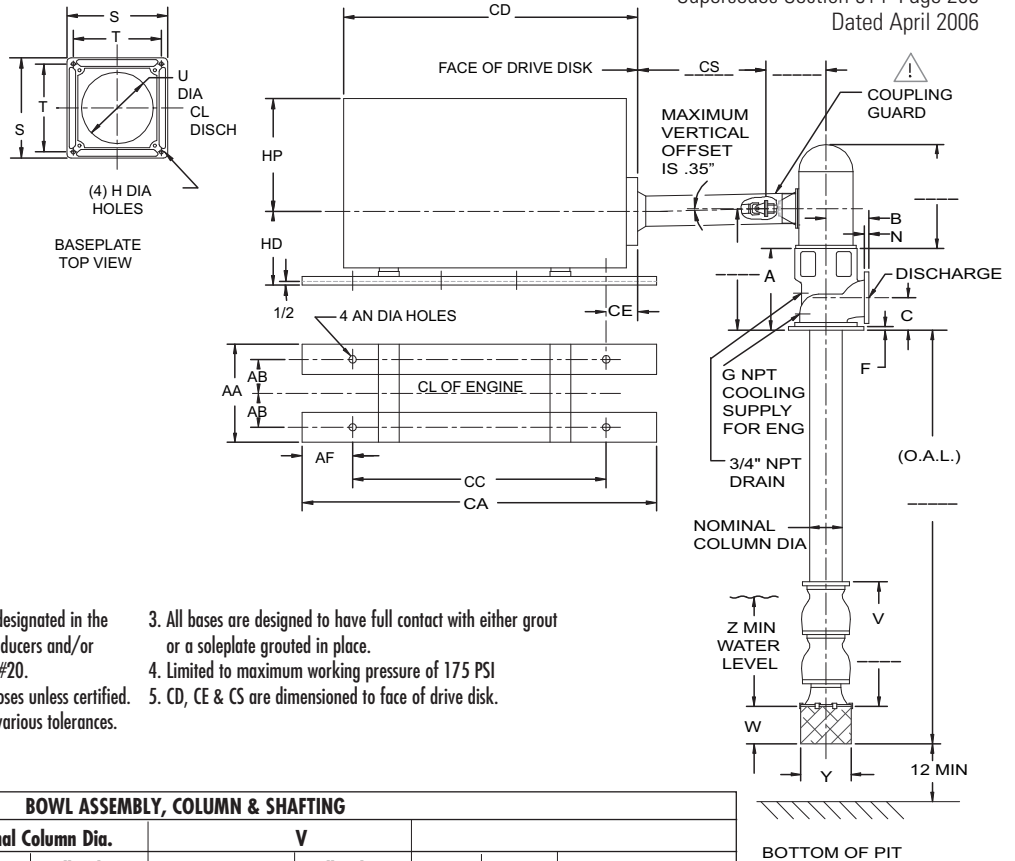
FAIRBANKS NIJHUIS™ FIRE PUMPS

Section **914** Page **209**

DIESEL DRIVEN VERTICAL TURBINE

Date **September 2011**

Supersedes Section 914 Page 209
Dated April 2006



GEAR		
Mfg.	Ratio	Model

NOTES

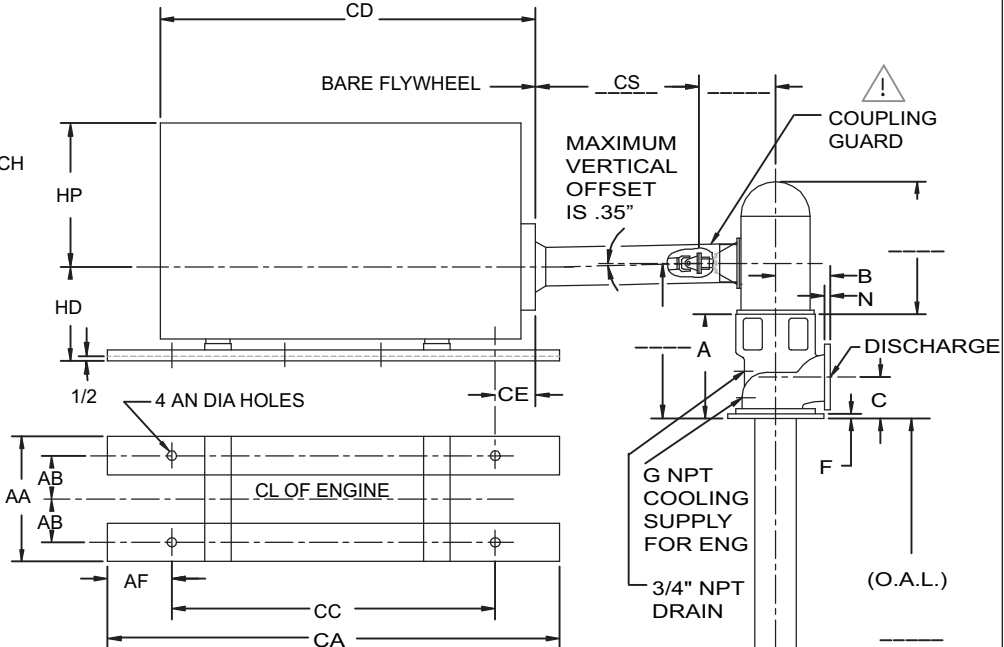
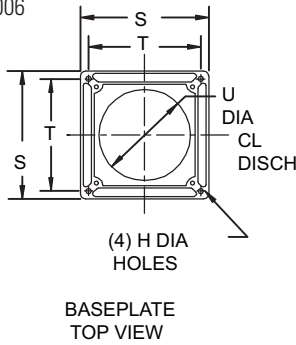
1. Flange ratings are either 125# or 250# and will be designated in the certification block below for each order submittal. Reducers and/or increasers may be required to meet NFPA Pamphlet #20.
2. Not for construction, installation, or application purposes unless certified. Dimensions shown are typical and may vary due to various tolerances.
3. All bases are designed to have full contact with either grout or a soleplate grouted in place.
4. Limited to maximum working pressure of 175 PSI
5. CD, CE & CS are dimensioned to face of drive disk.

BOWL ASSEMBLY, COLUMN & SHAFTING								
Size & Model	# of Stages	Nominal Column Dia.		V		W	Y	Z
		UL & FM Water Lube Only	All Others	UL & FM Water Lube Only	All Others			
13 H	4	8	10	61-13/16	65-1/4	11	13	34
	Total Stages		Add 13-1/16 for each additional stage over 4 stages					
15 H	3	10	12	54-1/16	57-7/16	13	14-3/4	34 - 2000 GPM 46 - 2500 GPM
	Total Stages		Add 14-1/2 for each additional stage over 3 stages					

DISCHARGE HEADS & BASEPLATES											
Size		A	B	C	F	G	H	N	S	T	U
BD	DISCH										
16-1/2	8 SDC	23	11-3/8	10	1-1/2	1	7/8	1-3/16	24	21	17-1/8
16-1/2	8 LAD	23	11-3/8	10	1-1/2	1	7/8	1-3/16	24	21	17-1/8
20	10 LAD	23	13-7/8	10-1/2	1-1/2	1	7/8	1-1/4	24	21	17-1/8

CLARKE JU6H DIESEL ENGINES												
MODEL	AA	AB	AF	AN	CA	CB	CC	CD	CE	CS	HD	HP
JU6HUF30	32	15	5	1 x 2	46	N/A	36	45.9	.88	15.2	20.35	45.8
JU6HUF50	32	15	5	1 x 2	46	N/A	36	45.9	.88	15.2	20.35	45.8
JU6HUF60	32	15	5	1 x 2	46	N/A	36	48	.88	15.2	20.35	45.8

Customer:				P.O.#:				Dwg.#			
Job Name:						<input type="checkbox"/> UL <input type="checkbox"/> FM <input type="checkbox"/> CUL			Flange Rating: <input type="checkbox"/> 125# <input type="checkbox"/> 250#		
Model:			# Stages:			GPM:			PSI:		Max. Lift:
Engine Mfg.:			Engine Model:			RPM:			HP:		
Certified By:						Date:					



GEAR		
Mfg.	Ratio	Model

- NOTES**
1. Flange ratings are either 125# or 250# and will be designated in the certification block below for each order submittal.
 2. Not for construction, installation, or application purposes unless certified. Dimensions shown are typical and may vary due to various tolerances.
 3. All bases are designed to have full contact with either grout or a soleplate grouted in place.
 4. CD, CE & CS are dimensioned to bare flywheel.

BOWL ASSEMBLY, COLUMN & SHAFTING								
Size & Model	# of Stages	Nominal Column Dia.		V		W	Y	Z
		UL & FM Water Lube Only	All Others	UL & FM Water Lube Only	All Others			
11 M	4	6	8	44-13/16	47-9/16	9	11-1/2	34
	Total Stages		Add 9-1/2 for each additional stage over 4 stages					
12 M	3	8	8	40	42-3/4	7	13	34
	Total Stages		Add 10-3/4 for each additional stage over 3 stages					

DISCHARGE HEADS & BASEPLATES											
Size		A	B	C	F	G	H	N	S	T	U
BD	DISCH	23	10-1/4	10	1-1/2	1	7/8	1-1/16	24	21	17-1/8
16-1/2	6 LAD										

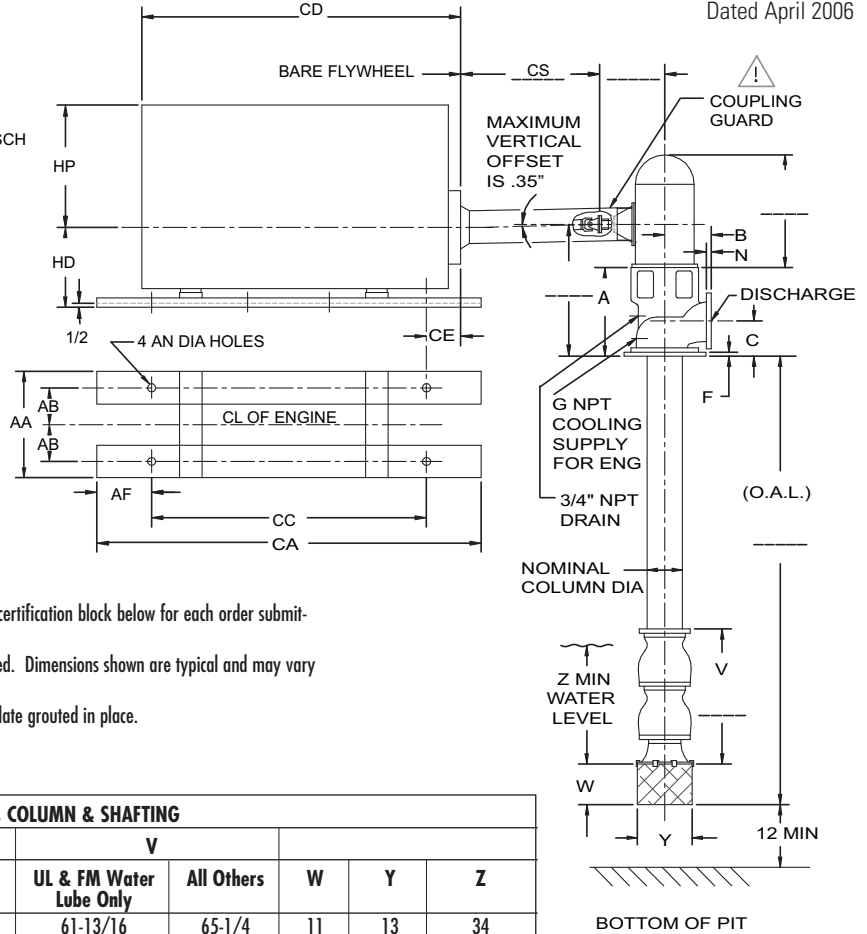
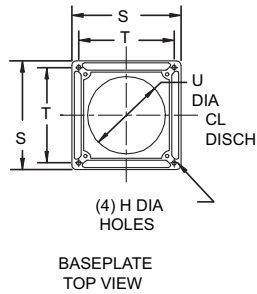
CLARKE JW6H DIESEL ENGINES												
MODEL	AA	AB	AF	AN	CA	CB	CC	CD	CE	CS	HD	HP
JW6HUF30	36	17	5	1 x 2	46	N/A	36	47.52	2.9	14.1	24	50.11
JW6HUF50	36	17	5	1 x 2	46	N/A	36	47.52	2.9	14.1	24	50.11
JW6HUF60	36	17	5	1 x 2	46	N/A	36	47.52	2.9	14.1	24	50.11

Customer:				P.O.#:				Dwg.#			
Job Name:						<input type="checkbox"/> UL <input type="checkbox"/> FM <input type="checkbox"/> CUL			Flange Rating: <input type="checkbox"/> 125# <input type="checkbox"/> 250#		
Model:		# Stages:		GPM:		PSI:		Max. Lift:			
Engine Mfg.:			Engine Model:			RPM:		HP:			
Certified By:				Date:							

DIESEL DRIVEN VERTICAL TURBINE

Date **September 2011**

Supersedes Section 914 Page 211
Dated April 2006



GEAR		
Mfg.	Ratio	Model

NOTES

1. Flange ratings are either 125# or 250# and will be designated in the certification block below for each order submittal.
2. Not for construction, installation, or application purposes unless certified. Dimensions shown are typical and may vary due to various tolerances.
3. All bases are designed to have full contact with either grout or a soleplate grouted in place.
4. Limited to maximum working pressure of 175 PSI

BOWL ASSEMBLY, COLUMN & SHAFTING								
Size & Model	# of Stages	Nominal Column Dia.		V		W	Y	Z
		UL & FM Water Lube Only	All Others	UL & FM Water Lube Only	All Others			
13 H	4	8	10	61-13/16	65-1/4	11	13	34
	Total Stages		Add 13-1/16 for each additional stage over 4 stages					
14 M	3	8	10	44-15/16	49-1/4	13	14-3/4	36
	Total Stages		Add 12-3/16 for each additional stage over 3 stages					

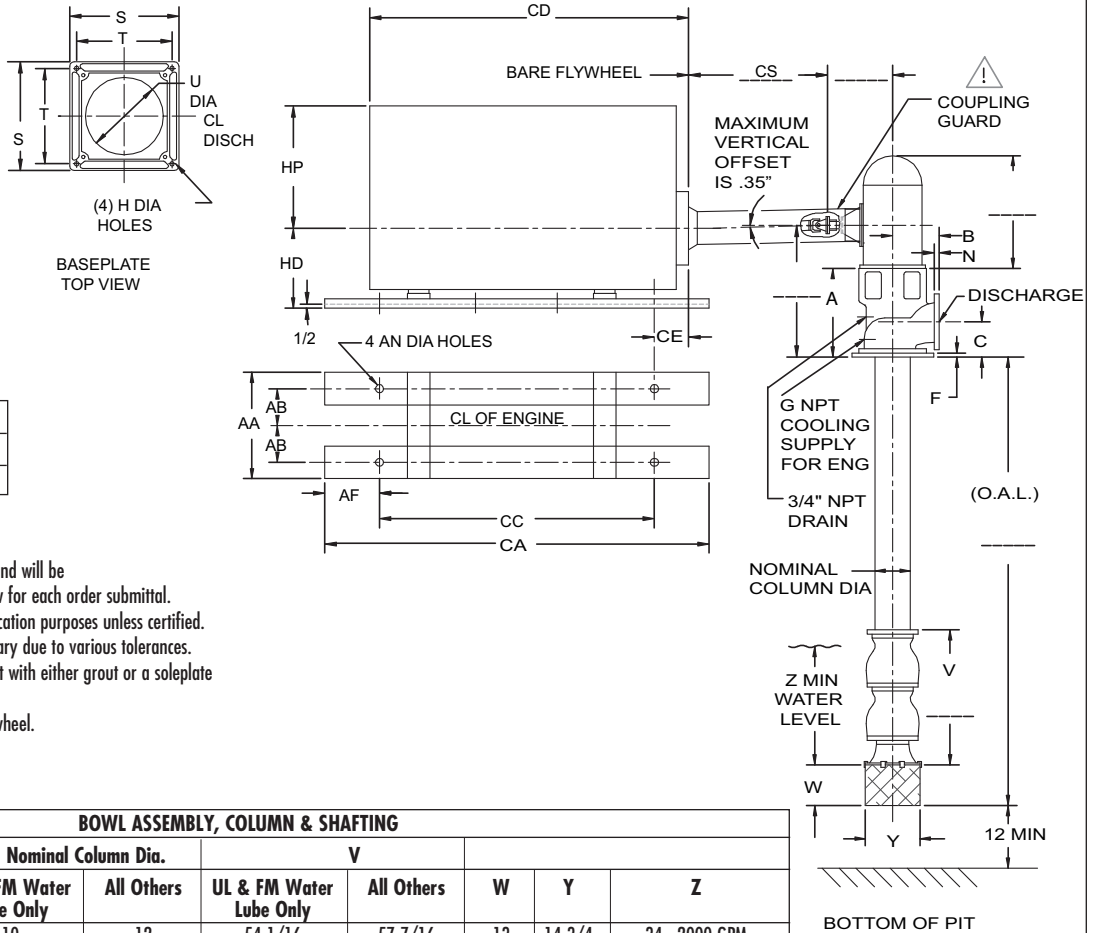
DISCHARGE HEADS & BASEPLATES											
Size		A	B	C	F	G	H	N	S	T	U
16-1/2	8 SDC	23	11-3/8	10	1-1/2	1	7/8	1-3/16	24	21	17-1/8
16-1/2	8 LAD	23	11-3/8	10	1-1/2	1	7/8	1-3/16	24	21	17-1/8
20	10 LAD	23	13-7/8	10-1/2	1-1/2	1	7/8	1-1/4	24	21	17-1/8

CLARKE JW6H DIESEL ENGINES												
MODEL	AA	AB	AF	AN	CA	CB	CC	CD	CE	CS	HD	HP
JW6HUF30	36	17	5	1 x 2	46	N/A	36	49.4	4.6	19.7	24	50.1
JW6HUF40	36	17	5	1 x 2	46	N/A	36	49.4	4.6	19.7	24	50.1
JW6HUF50	36	17	5	1 x 2	46	N/A	36	49.4	4.6	19.7	24	50.1
JW6HUF60	36	17	5	1 x 2	46	N/A	36	49.4	4.6	19.7	24	50.1

Customer:				P.O.#:				Dwg.#			
Job Name:				<input type="checkbox"/> UL <input type="checkbox"/> FM <input type="checkbox"/> CUL				Flange Rating: <input type="checkbox"/> 125# <input type="checkbox"/> 250#			
Model:		# Stages:		GPM:		PSI:		Max. Lift:			
Engine Mfg.:		Engine Model:		RPM:		HP:					
Certified By:				Date:							

DIESEL DRIVEN VERTICAL TURBINE

Supersedes Section 914 Page 212
Dated April 2006



GEAR		
Mfg.	Ratio	Model

NOTES

1. Flange ratings are either 125# or 250# and will be designated in the certification block below for each order submittal.
2. Not for construction, installation, or application purposes unless certified. Dimensions shown are typical and may vary due to various tolerances.
3. All bases are designed to have full contact with either grout or a soleplate grouted in place.
4. CD, CE & CS are dimensioned to bare flywheel.

BOWL ASSEMBLY, COLUMN & SHAFTING								
Size & Model	# of Stages	Nominal Column Dia.		V		W	Y	Z
		UL & FM Water Lube Only	All Others	UL & FM Water Lube Only	All Others			
15 H	3	10	12	54-1/16	57-7/16	13	14-3/4	34 - 2000 GPM 46 - 2500 GPM
	Total Stages		Add 14-1/2 for each additional stage over 3 stages					
19 A	2	12	N/A	47-5/8	N/A	12	23-1/2	32
	Total Stages		Add 17-5/8 for each additional stage over 2 stages					

DISCHARGE HEADS & BASEPLATES											
Size		A	B	C	F	G	H	N	S	T	U
BD	DISCH										
20	10 LAD	23	13-7/8	10-1/2	1-1/2	1	7/8	1-1/4	24	21	17-1/8
24-1/2	12 SDH	28	17	13-1/2	2	3/4	1-1/8	1-7/8	32-1/4	26-5/32	24-1/2

CLARKE JW6H DIESEL ENGINES												
MODEL	AA	AB	AF	AN	CA	CB	CC	CD	CE	CS	HD	HP
JW6HUF30	36	17	5	1 x 2	46	N/A	36	49.4	4.6	19.7	24	50.1
JW6HUF40	36	17	5	1 x 2	46	N/A	36	49.4	4.6	19.7	24	50.1
JW6HUF50	36	17	5	1 x 2	46	N/A	36	49.4	4.6	19.7	24	50.1
JW6HUF60	36	17	5	1 x 2	46	N/A	36	49.4	4.6	19.7	24	50.1

Customer:				P.O.#:				Dwg.#			
Job Name:						<input type="checkbox"/> UL <input type="checkbox"/> FM <input type="checkbox"/> CUL			Flange Rating: <input type="checkbox"/> 125# <input type="checkbox"/> 250#		
Model:			# Stages:			GPM:		PSI:		Max. Lift:	
Engine Mfg.:			Engine Model:				RPM:		HP:		
Certified By:					Date:						

THIS PAGE LEFT INTENTIONALLY BLANK

THIS PAGE LEFT INTENTIONALLY BLANK