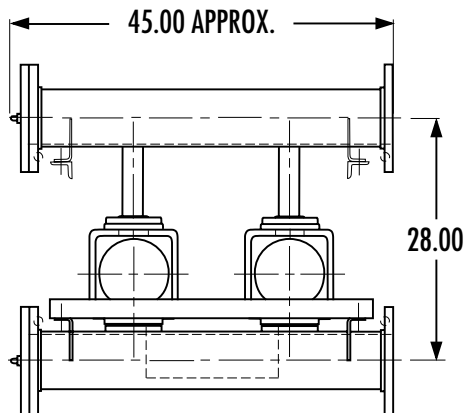


AURORA MODEL 790

VERTICAL DUPLEX WITHOUT TANK

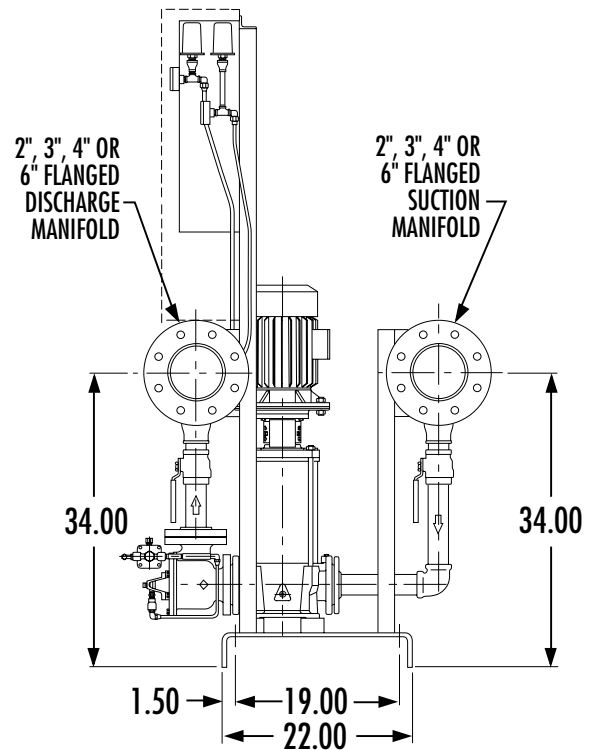
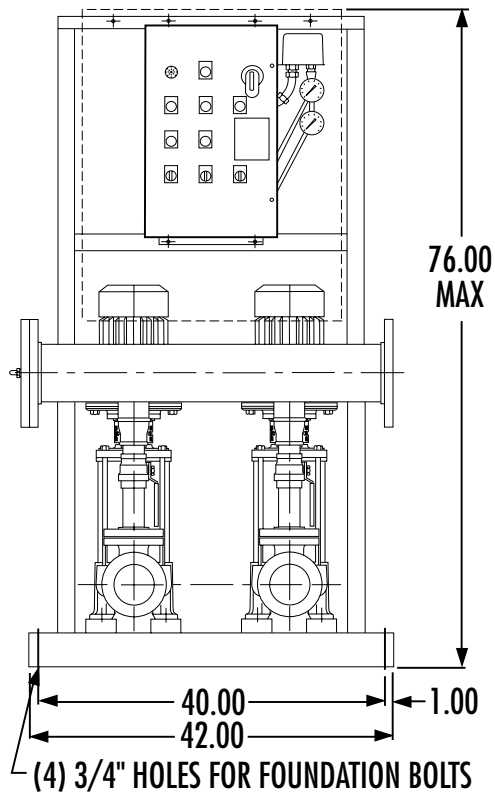
Section **790** Page **201**

Date **October 2003**



NOTES:

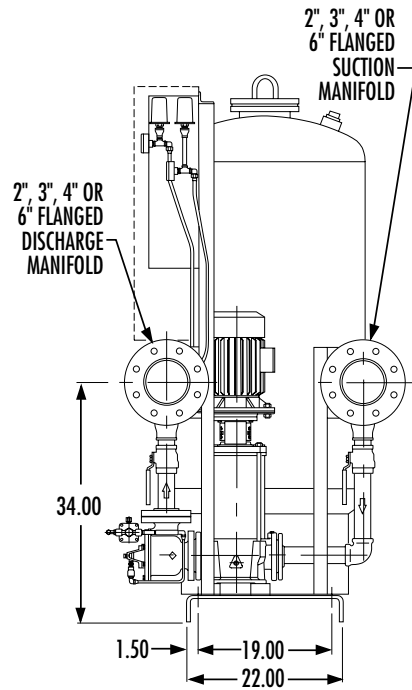
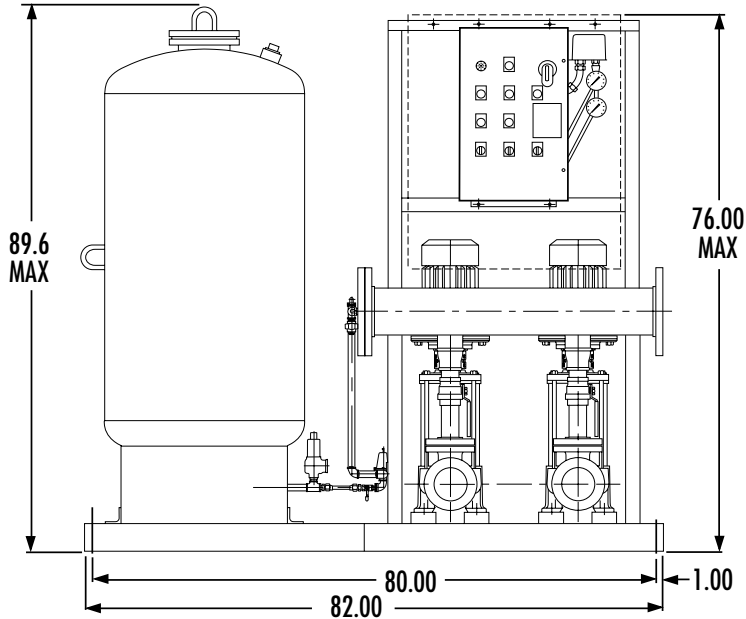
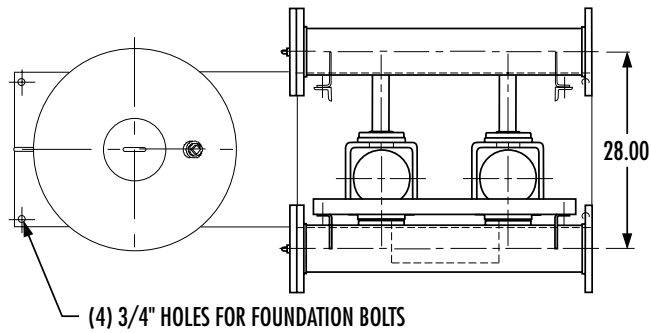
1. ALL DIMENSIONS ARE IN INCHES AND MAY VARY $\pm 1/2"$.
2. NOT FOR CONSTRUCTION PURPOSES UNLESS CERTIFIED.
3. MANIFOLD FLANGES ARE ANSI STANDARD CLASS 250 FLAT FACE.
4. STANDARD (RIGHT HAND) ASSEMBLY IS SHOWN. CONSULT FACTORY FOR OTHER CONFIGURATIONS.



AURORA MODEL 790VERTICAL DUPLEX
WITH TANK

NOTES:

1. ALL DIMENSIONS ARE IN INCHES AND MAY VARY $\pm 1/2"$.
2. NOT FOR CONSTRUCTION PURPOSES UNLESS CERTIFIED.
3. MANIFOLD FLANGES ARE ANSI STANDARD CLASS 250 FLAT FACE.
4. STANDARD (RIGHT HAND) ASSEMBLY IS SHOWN. CONSULT FACTORY FOR OTHER CONFIGURATIONS.



AURORA MODEL 790

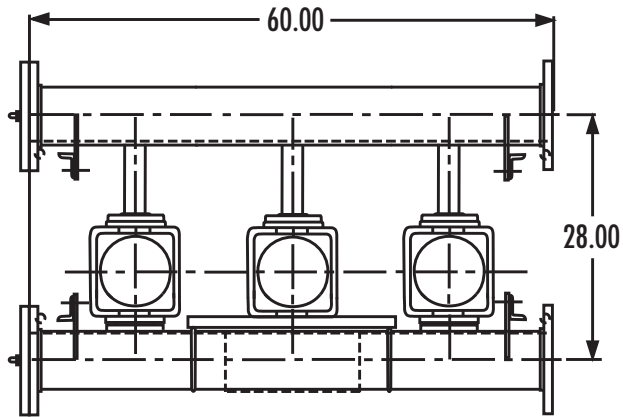
VERTICAL TRIPLEX WITHOUT TANK

Section **790** Page **203**

Date **October 2007**

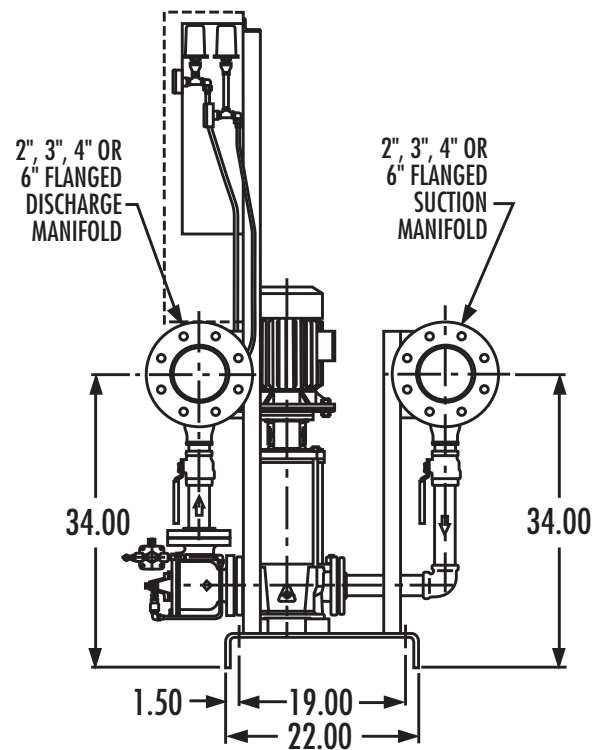
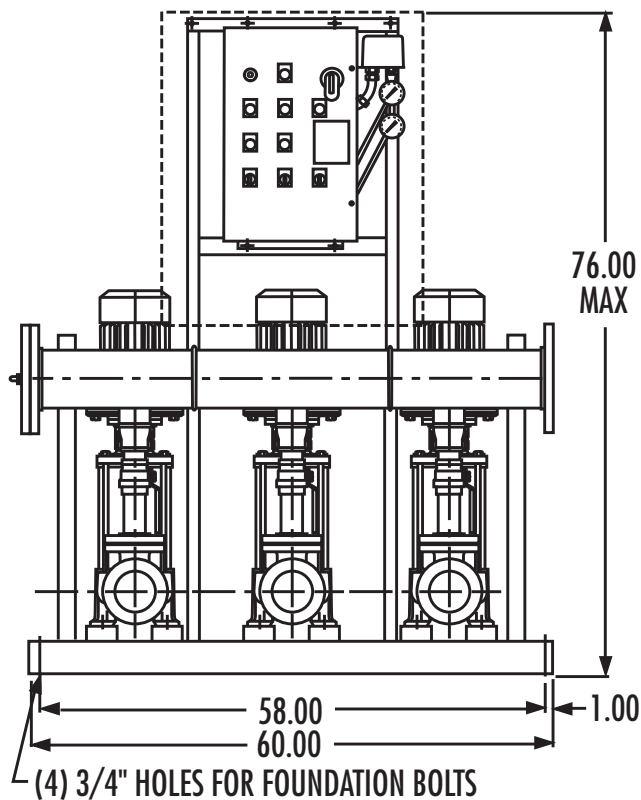
Supersedes Section 790 Page 203

Dated October 2003



NOTES:

1. ALL DIMENSIONS ARE IN INCHES AND MAY VARY $\pm 1/2"$.
2. NOT FOR CONSTRUCTION PURPOSED UNLESS CERTIFIED.
3. MANIFOLD FLANGES ARE ANSI STANDARD CLASS 250 FLAT FACE.
4. STANDARD (RIGHT HAND) ASSEMBLY IS SHOWN. CONSULT FACTORY FOR OTHER CONFIGURATIONS.



AURORA MODEL 790

VERTICAL TRIPLEX WITH TANK

NOTES:

1. ALL DIMENSIONS ARE IN INCHES AND MAY VARY $\pm 1/2"$.
2. NOT FOR CONSTRUCTION PURPOSES UNLESS CERTIFIED.
3. MANIFOLD FLANGES ARE ANSI STANDARD CLASS 250 FLAT FACE.
4. STANDARD (RIGHT HAND) ASSEMBLY IS SHOWN. CONSULT FACTORY FOR OTHER CONFIGURATIONS.

