



SRA-125-CV shown  
(pump not included)

**MYERS<sup>®</sup>**  
**SRA SERIES**  
**1¼" TO 3" LIFT-OUT PACKAGES**  
**FOR GRINDER, SEWAGE AND**  
**EFFLUENT PUMPS**

# MYERS® SRA SERIES

## Lift-out Packages

### Technical Information

Myers SRA Lift-out Package makes installation and service of grinder, sewage and effluent pumps safer and easier. The SRA adapts to nearly any vertical discharge wastewater pump from 1-1/4" to 3". Support brackets are stainless steel for sewage, dewatering or effluent pumping applications.

NOTE: SRAX-125 package available for Class 1, Division 1, Groups C & D installations.

For more information on safer, easier pump installation and service call your Myers distributor today, or the Myers Ashland sales office at 419-289-1144.

### Lift-out Package Offers Ease of Service and Reinstallation.

- Fast and easy pump removal.
- No need for personnel to enter basin.
- Offered with or without check valve.
- Handles 1-1/4" to 3" discharge pumps.
- Heavy-duty cast iron construction.
- Stainless steel brackets ensure parts will not corrode.
- Positive machine fit with O-ring seal.

### System includes:

- Mounting base.
- Lift-out elbow with check valve.
- Guide plate.
- Fasteners and O-rings.



Construction Materials

	SRA-125	SRA-150	SRA-200	SRA-300	SRA-320
Elbow Size	1-1/4" x 2"	1-1/2" x 2"	2" x 2"	3" x 3"	2" x 3"
Guide Plate	SST	Galv/SST	Galv/SST	Galv/SST	Galv/SST
Lift-out Elbow w/check valve	Cast Iron**	Cast Iron	Cast Iron	Cast Iron	Cast Iron
Mounting Base	Cast Iron	Cast Iron	Cast Iron	Cast Iron	Cast Iron
Fasteners	SST	SST	SST	SST	SST
O-Ring	BUNA-N	BUNA-N	BUNA-N	BUNA-N	BUNA-N
Guide Rails*	1" SST	3/4" SST	3/4" SST	3/4" SST	3/4" SST
Top Rail Support*	TRS-100	TRS-75	TRS-75	TRS-75	TRS-75
Chain*	Galv/SST	Galv/SST	Galv/SST	Galv/SST	Galv/SST

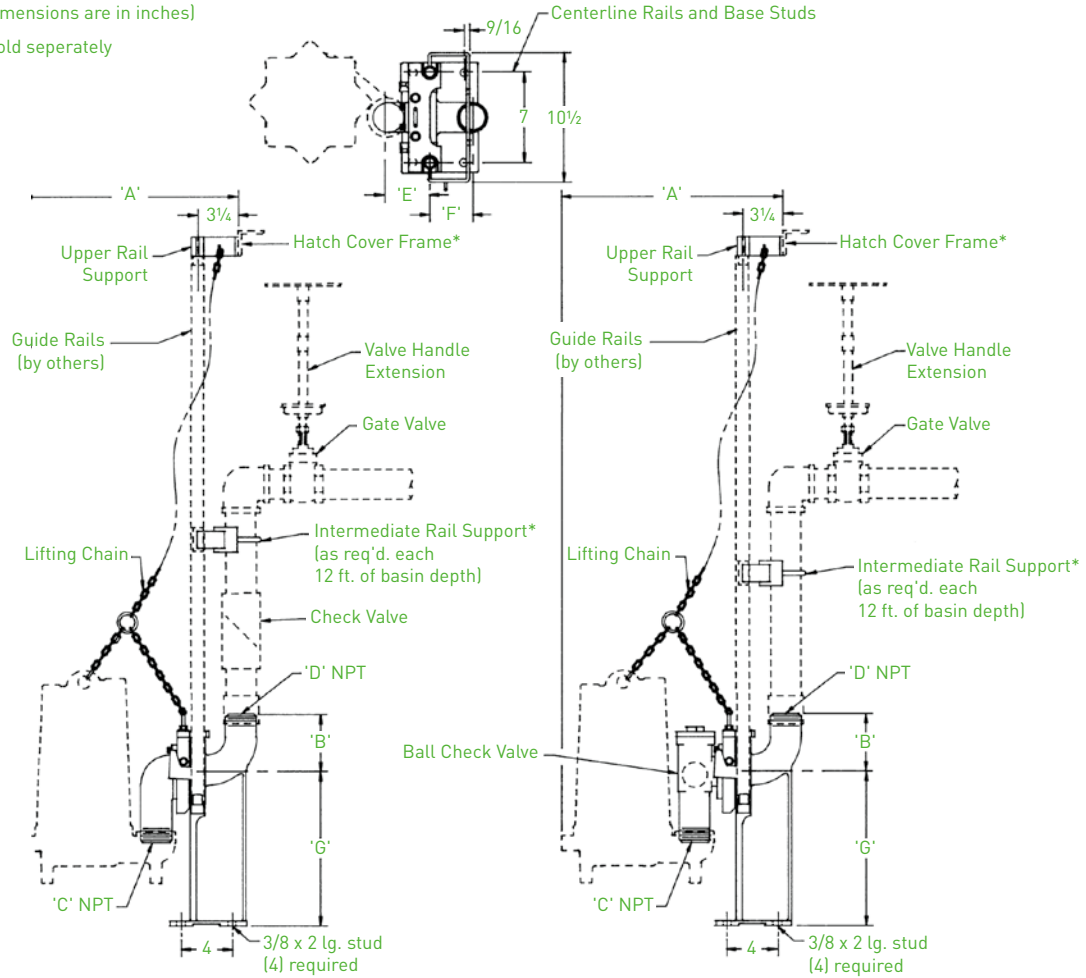
\* Must be ordered separately.

\*\*Bronze for hazardous locations.

# Advantages by Design

[Dimensions are in inches]

\*Sold separately



PUMP	'A'	LIFT-OUT
MG/MGH200	16-1/16"	SRA-125 SRA-125-CV
WGL20	15-3/8"	
WG20	15-3/8"	
P Series	17-3/8"	SRA-150 SRA-150CV
ME3F	16-1/8"	
ME3H	15-7/8"	
WHR	16-3/4"	
WHRH	16-5/8"	SRA-200 SRA-200CV SRA-320
MWH/MW	18-1/8"	
SRM4	15-1/2"	
ME Series	17-5/8"	SRA-300
3MW (3450)	19-1/4"	
3MW (1750)	20-5/16"	

Lift-out	'B'	'C'	'D'	'E'	'F'	'G'
SRA-125	4-3/8"	1-1/4"	2"	2-15/16"	3-1/4"	9-11/16"
SRA-150	4-5/16"	1-1/2"	2"	3-1/4"	3-3/8"	12"
SRA-200	4-5/16"	2"	2"	3-1/4"	3-3/8"	12"
SRA-320	6-1/2"	2"	3"	3-1/4"	4-11/16"	12"
SRA-300	6-1/2"	3"	3"	4"	4-11/16"	12"
SRA-125-CV	4-3/8"	1-1/4"	2"	2-15/16"	3-1/4"	9-11/16"
SRA-150-CV	4-5/16"	1-1/2"	2"	3-1/4"	3-3/8"	12"
SRA-200-CV	4-5/16"	2"	2"	3-1/2"	3-3/8"	12"



740 EAST 9TH STREET,  
ASHLAND, OHIO 44805  
[WWW.FEMYERS.COM](http://WWW.FEMYERS.COM)

269 TRILLIUM DRIVE, KITCHENER,  
ONTARIO, CANADA N2G 4W5  
[WWW.FEMYERS.COM](http://WWW.FEMYERS.COM)

Because we are continuously improving our products and services, Pentair reserves the right to change specifications without prior notice.  
K3738 01/04/13 © 2013 Pentair Ltd. All Rights Reserved.