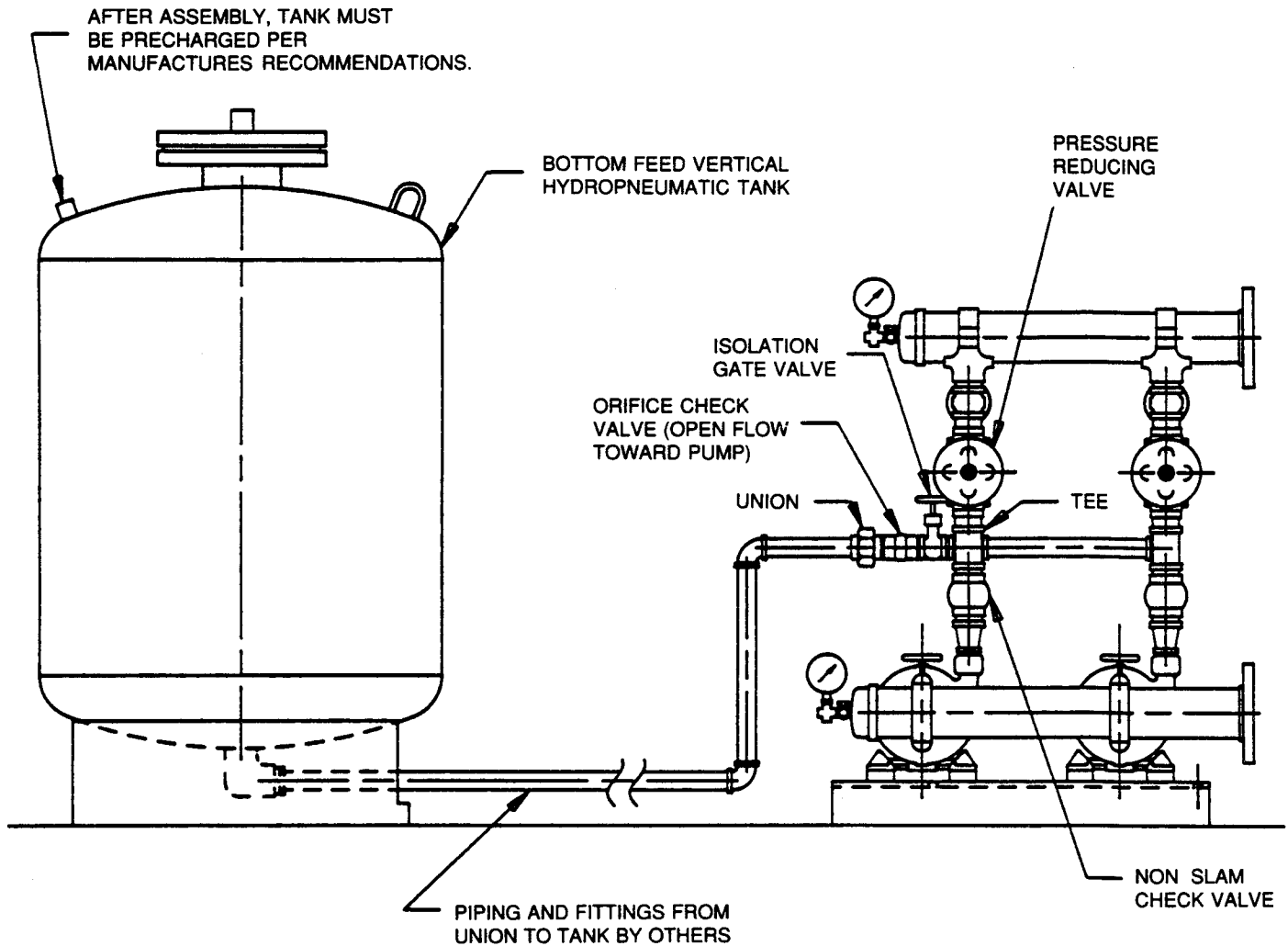


**SUGGESTED PIPING ARRANGEMENT FOR
REMOTE HYDROPNEUMATIC TANK**

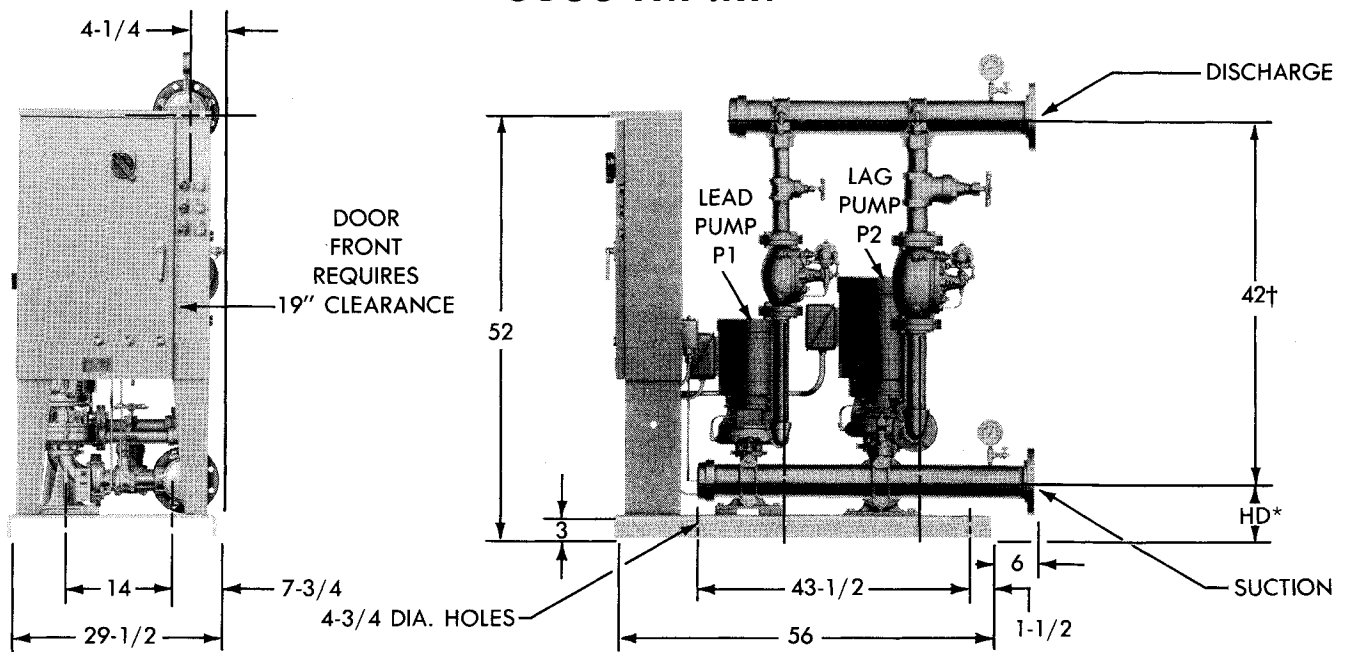


NOTE:

1. PARTS SHIPPED LOOSE FOR FIELD ASSEMBLY:
UNION
ORIFICE CHECK VALVE
ISOLATION VALVE
2. ADDITIONAL TANK PIPING BY OTHERS

THIS PAGE LEFT INTENTIONALLY BLANK

**APCO-PM
 DUPLEX
 LOW & HIGH PRESSURE
 BOOSTER SYSTEMS
 3500 R.P.M.**



LOW PRESSURE

PUMP NO.		PUMP SIZE	HD*
P1	P2		
		1-1/4 x 1-1/2 x 7	6-3/4
		1-1/2 x 2 x 7	7-1/8
		2 x 2-1/2 x 7A	7-1/2
		2-1/2 x 3 x 7B	8

HIGH PRESSURE

PUMP NO.		PUMP SIZE	HD*
P1	P2		
		1-1/2 x 2 x 9C	7-1/8
		2 x 2-1/2 x 9	7-1/2

CAPACITY RANGE	FLANGED MANIFOLDS	
	SUCTION	DISCHARGE
0-200 G.P.M. FLOWS	4	3
200-400 G.P.M. FLOWS	4	4
400-800 G.P.M. FLOWS	5	5
600-800 G.P.M. FLOWS	6	6

NOTES:

1. ALL DIMENSIONS IN INCHES.
2. DIMENSIONS MAY VARY ± 1/2.
3. NOT FOR CONSTRUCTION PURPOSES UNLESS CERTIFIED.
4. DISCHARGE AND SUCTION FLANGES AMERICAN STANDARD FLAT FACE 125#.
5. 1 GROUT HOLE IS PROVIDED IN TOP OF BASE.
6. WHEN MAKING SELECTIONS, DO NOT COMBINE LOW AND HIGH PRESSURE PUMPS.

*ALWAYS USE "HD" DIMENSION FOR LARGEST PUMP SIZE SPECIFIED.

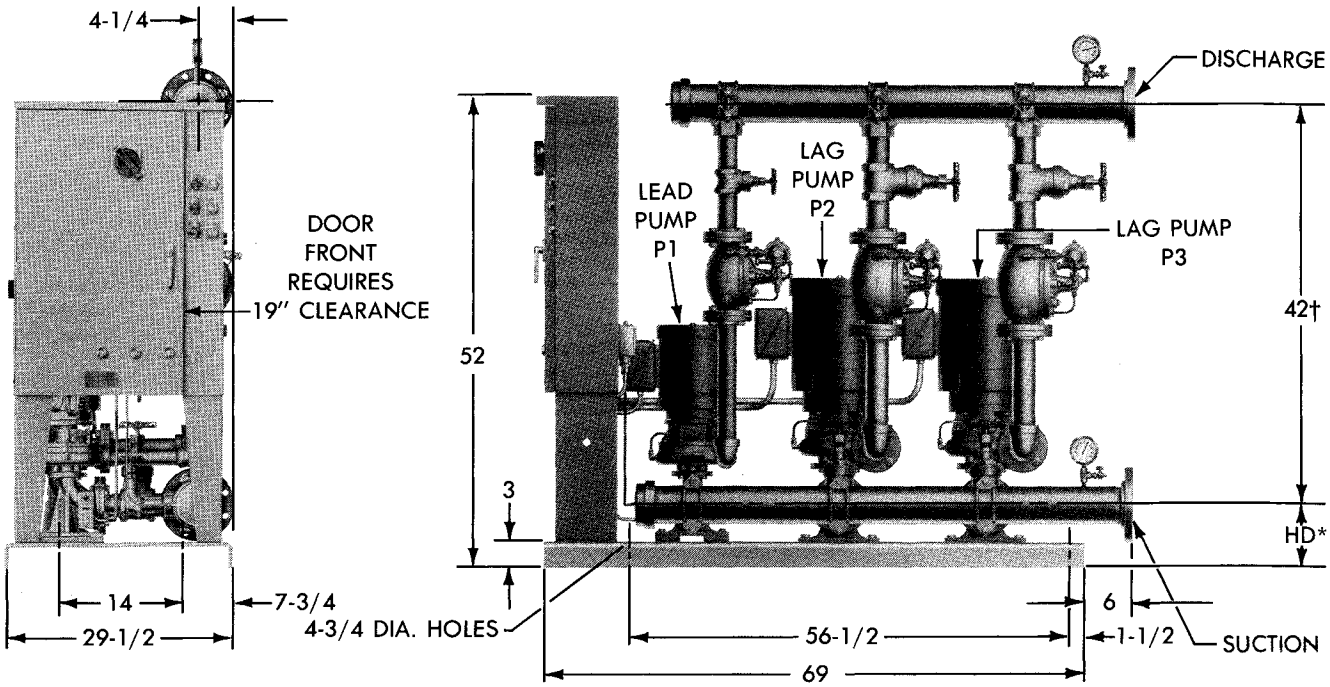
†48" WHEN 4" PRV IS USED.

AURORA MODEL 753 PUMPS

APCO-PM TRI-PLEX

LOW & HIGH PRESSURE BOOSTER SYSTEMS

3500 R.P.M.



LOW PRESSURE

PUMP NO.			PUMP SIZE	HD*
P1	P2	P3		
			1-1/4 x 1-1/2 x 7	6-3/4
			1-1/2 x 2 x 7	7-1/8
			2 x 2-1/2 x 7A	7-1/2
			2-1/2 x 3 x 7B	8

HIGH PRESSURE

PUMP NO.			PUMP SIZE	HD*
P1	P2	P3		
			1-1/2 x 2 x 9C	7-1/8
			2 x 2-1/2 x 9	7-1/2

CAPACITY RANGE	FLANGED MANIFOLDS	
	SUCTION	DISCHARGE
0-400 G.P.M. FLOWS	4	4
400-600 G.P.M. FLOWS	5	5
600-1200 G.P.M. FLOWS	6	6

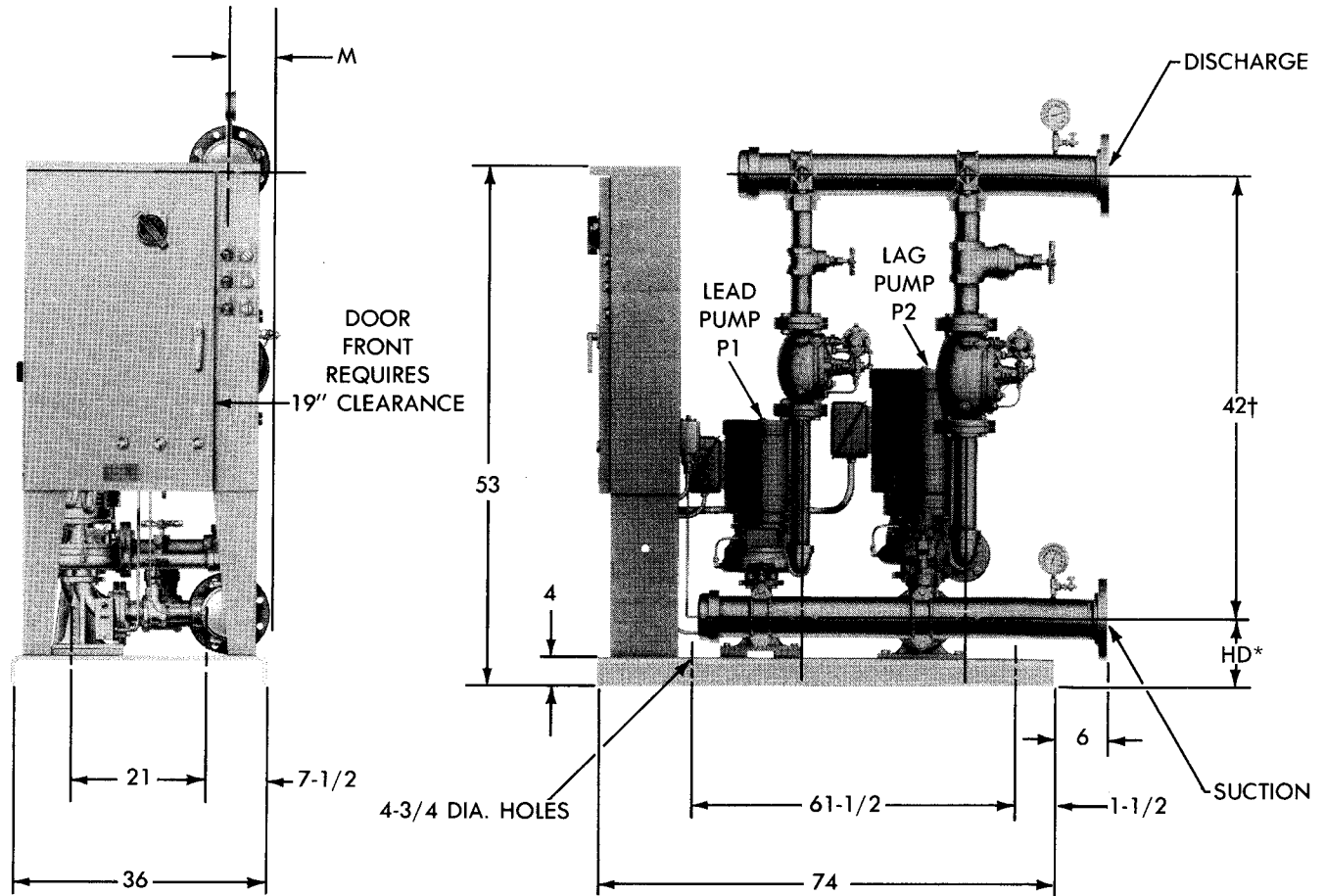
NOTES:

1. ALL DIMENSIONS IN INCHES.
2. DIMENSIONS MAY VARY $\pm 1/2$.
3. NOT FOR CONSTRUCTION PURPOSES UNLESS CERTIFIED.
4. DISCHARGE AND SUCTION FLANGES AMERICAN STANDARD FLAT FACE 125#.
5. 2 GROUT HOLES ARE PROVIDED IN TOP OF BASE.
6. WHEN MAKING SELECTIONS, DO NOT COMBINE LOW AND HIGH PRESSURE PUMPS.

*ALWAYS USE "HD" DIMENSION FOR LARGEST PUMP SIZE SPECIFIED.

†48" WHEN 4" PRV IS USED.

**APCO-PM
 DUPLEX
 BOOSTER SYSTEMS
 1750 R.P.M.**



PUMP NO.		PUMP SIZE	HD*	M
P1	P2			
		2-1/2 x 3 x 9	9	4-1/4
		2 x 3 x 11	9	6
		1-1/2 x 2 x 12	8-1/8	6
		2-1/2 x 3 x 12	9	6

CAPACITY RANGE	FLANGED MANIFOLDS	
	SUCTION	DISCHARGE
0-200 G.P.M. FLOWS	4	3
200-400 G.P.M. FLOWS	4	4
400-600 G.P.M. FLOWS	5	5
600-900 G.P.M. FLOWS	6	6

NOTES:

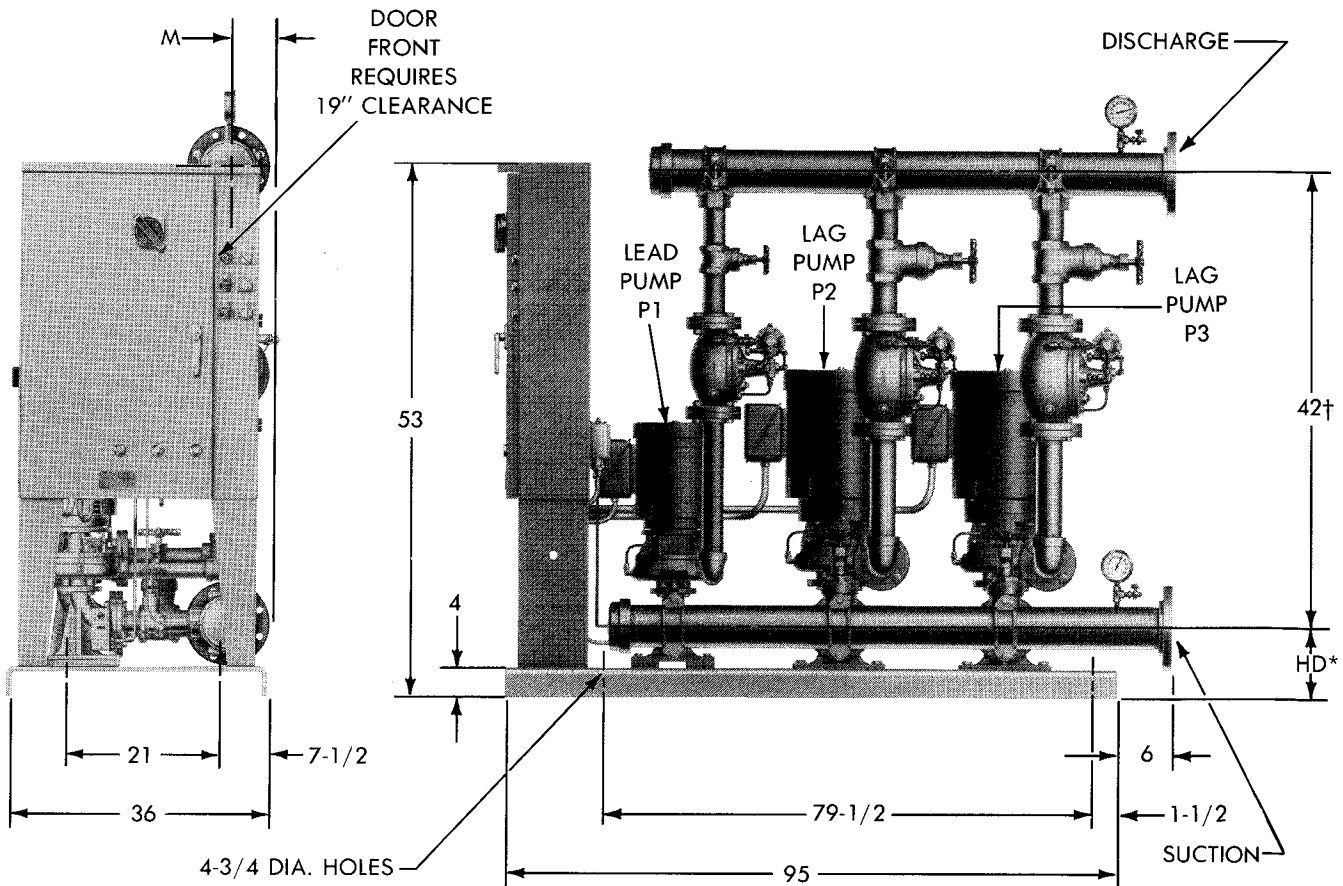
1. ALL DIMENSIONS IN INCHES.
2. DIMENSIONS MAY VARY $\pm 1/2$.
3. NOT FOR CONSTRUCTION PURPOSES UNLESS CERTIFIED.
4. DISCHARGE AND SUCTION FLANGES AMERICAN STANDARD FLAT FACE 125#.
5. 1 GROUT HOLE IS PROVIDED IN TOP OF BASE.
6. WHEN MAKING SELECTIONS, DO NOT MIX 1750 R.P.M. AND 3500 R.P.M. PUMPS.

*ALWAYS USE "HD" DIMENSION FOR LARGEST PUMP SIZE SPECIFIED.

†48" WHEN 4" PRV IS USED.

AURORA MODEL 753 PUMPS

APCO-PM TRI-PLEX BOOSTER SYSTEMS 1750 R.P.M.



PUMP NO.			PUMP SIZE	HD*	M
P1	P2	P3			
			2-1/2 x 3 x 9	9	4-1/4
			2 x 3 x 11	9	6
			1-1/2 x 2 x 12	8-1/8	6
			2-1/2 x 3 x 12	9	6

CAPACITY RANGE	FLANGED MANIFOLDS	
	SUCTION	DISCHARGE
0-400 G.P.M. FLOWS	4	4
400-600 G.P.M. FLOWS	5	5
600-800 G.P.M. FLOWS	6	6

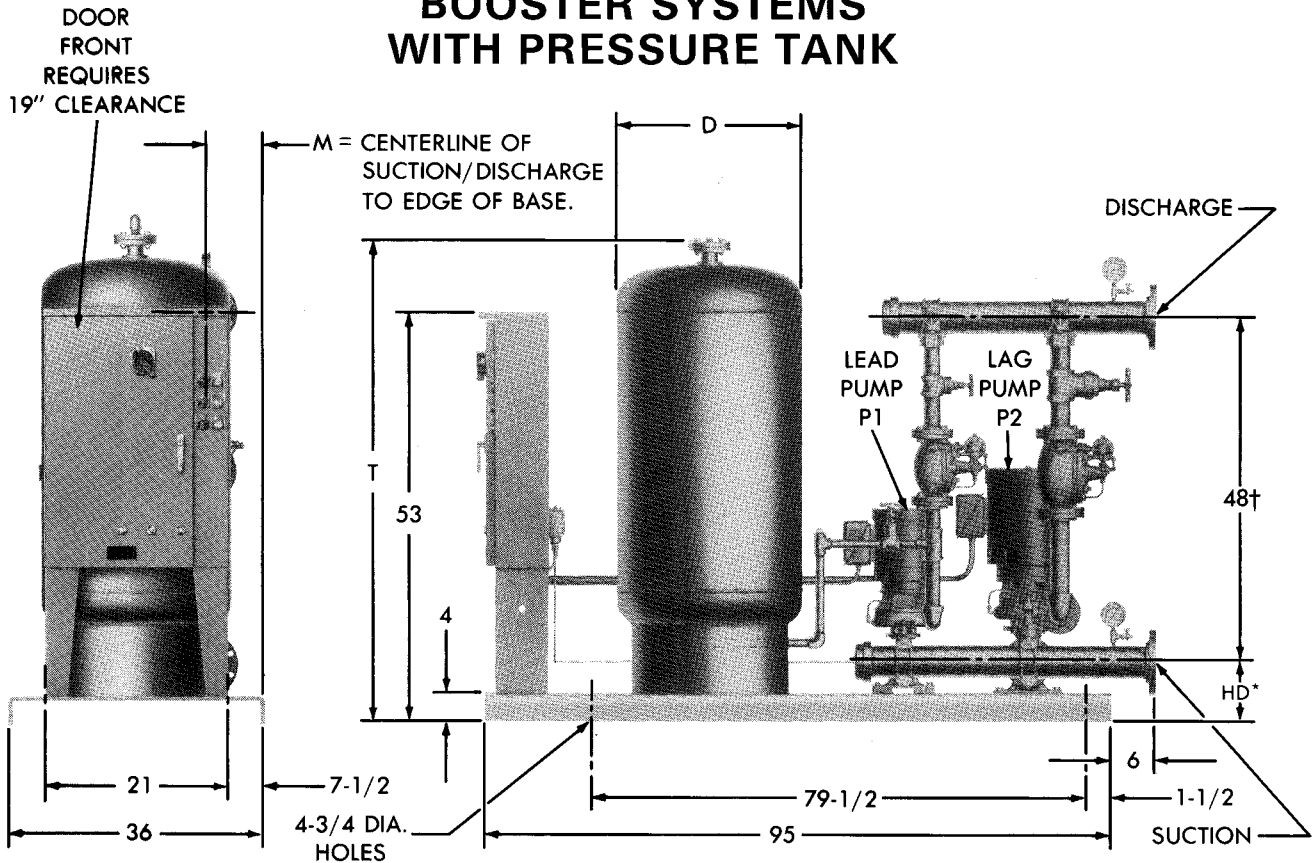
NOTES:

1. ALL DIMENSIONS IN INCHES.
2. DIMENSIONS MAY VARY $\pm 1/2$.
3. NOT FOR CONSTRUCTION PURPOSES UNLESS CERTIFIED.
4. DISCHARGE AND SUCTION FLANGES AMERICAN STANDARD FLAT FACE 125#.
5. 2 GROUT HOLES ARE PROVIDED IN TOP OF BASE.
6. WHEN MAKING SELECTIONS, DO NOT MIX 1750 R.P.M. AND 3500 R.P.M. PUMPS.

*ALWAYS USE "HD" DIMENSION FOR LARGEST PUMP SIZE SPECIFIED.

†48" WHEN 4" PRV IS USED.

BOOSTER SYSTEMS WITH PRESSURE TANK



PUMP NO.		PUMP SIZE	HD*	M	R.P.M.
P1	P2				
		1-1/4 x 1-1/2 x 7	7-3/4	7-1/4	3500
		1-1/2 x 2 x 7	8-1/8	7-1/4	
		2 x 2-1/2 x 7A	8-1/2	7-1/4	
		2-1/2 x 3 x 7B	9	7-1/4	
		1-1/2 x 2 x 9C	8-1/8	7-1/4	
		2 x 2-1/2 x 9	8-1/2	7-1/4	
		2-1/2 x 3 x 9	9	7-1/4	1750
		2 x 3 x 11	9	5	
		1-1/2 x 2 x 12	8-1/8	6	
		2-1/2 x 3 x 12	9	5	

HYDRO PNEUMATIC TANKS						
TANK SIZE (GALLONS)	T	D	WEIGHT LBS.			
			125 PSI	175 PSI	200 PSI	250 PSI
79	59	24	271	325	-	400
106	53	30	300	343	-	435
132	61	30	330	349	-	465
158	69	30	360	436	-	500
170	80	30	-	-	575	-
211	67	36	513	626	-	813

CAPACITY RANGE	FLANGED MANIFOLDS	
	SUCTION	DISCHARGE
0-200 G.P.M. FLOWS	4	3
200-400 G.P.M. FLOWS	4	4
400-600 G.P.M. FLOWS	5	5
600-800 G.P.M. FLOWS	6	6

NOTES:

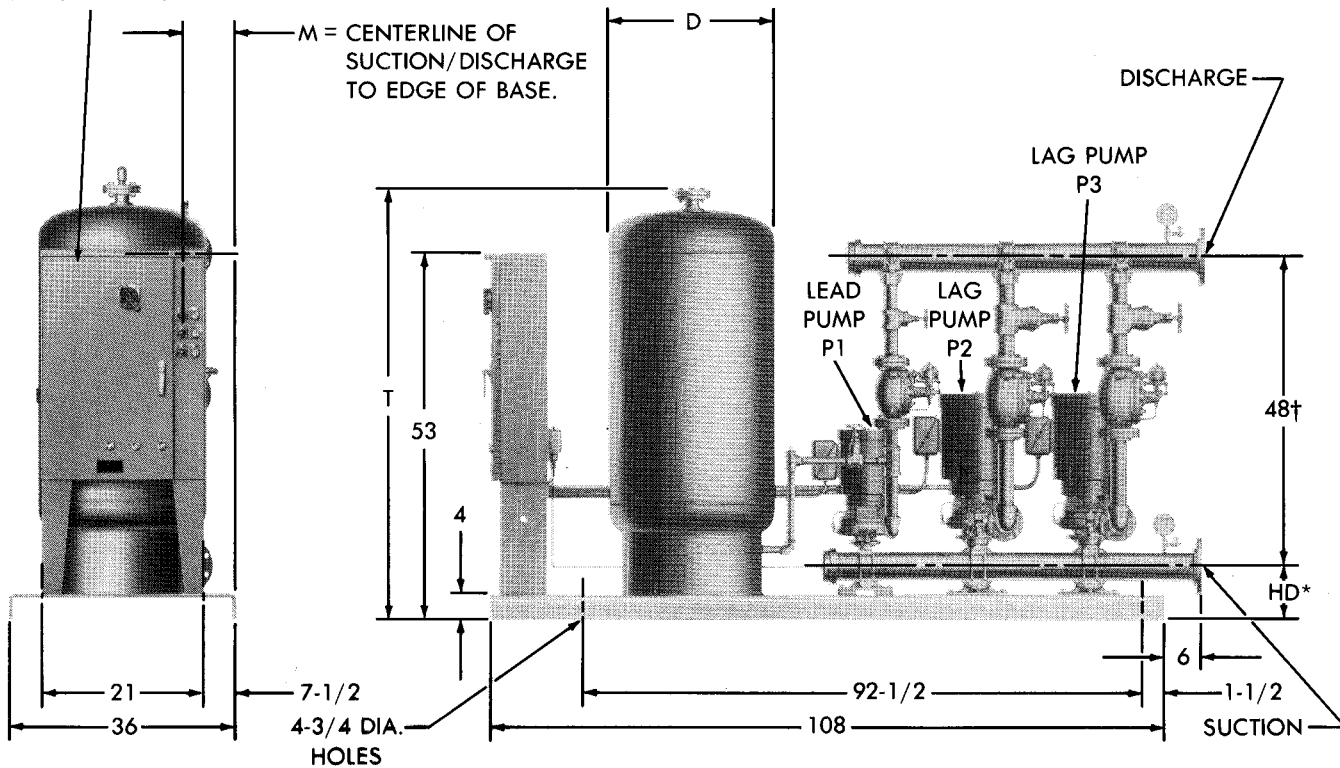
1. ALL DIMENSIONS IN INCHES.
2. DIMENSIONS MAY VARY ±1/2.
3. NOT FOR CONSTRUCTION PURPOSES UNLESS CERTIFIED.
4. DISCHARGE AND SUCTION FLANGES ANSI STANDARD FLAT FACE 125#.
5. 2 GROUT HOLES ARE PROVIDED IN TOP OF BASE.
6. WHEN MAKING SELECTIONS, DO NOT MIX 1750 R.P.M. AND 3500 R.P.M. PUMPS OR 7" AD 9" PUMPS.

*ALWAYS USE "HD" DIMENSION FOR LARGEST PUMP SIZE SPECIFIED.

†54" WHEN 4" PRV IS USED.

**BOOSTER SYSTEMS
WITH PRESSURE TANK**

DOOR
FRONT
REQUIRES
19" CLEARANCE



PUMP NO.			PUMP SIZE	HD*	M	R.P.M.
P1	P2	P3				
			1-1/4 x 1-1/2 x 7	7-3/4	7-1/4	3500
			1-1/2 x 2 x 7	8-1/8	7-1/4	
			2 x 2-1/2 x 7A	8-1/2	7-1/4	
			2-1/2 x 3 x 7B	9	7-1/4	
			1-1/2 x 2 x 9C	8-1/8	7-1/4	
			2 x 2-1/2 x 9	8-1/2	7-1/4	
			2-1/2 x 3 x 9	9	7-1/4	1750
			2 x 3 x 11	9	5	
			1-1/2 x 2 x 12	8-1/8	6	
			2-1/2 x 3 x 12	9	5	

HYDRO PNEUMATIC TANKS						
TANK SIZE (GALLONS)	T	D	WEIGHT LBS.			
			125 PSI	175 PSI	200 PSI	250 PSI
79	59	24	271	325	-	400
106	53	30	300	343	-	435
132	61	30	330	349	-	465
158	69	30	360	436	-	500
170	80	30	-	-	575	-
211	67	36	513	626	-	813

CAPACITY RANGE	FLANGED MANIFOLDS	
	SUCTION	DISCHARGE
0-400 G.P.M. FLOWS	4	4
400-600 G.P.M. FLOWS	5	5
600-1200 G.P.M. FLOWS	6	6

NOTES:

1. ALL DIMENSIONS IN INCHES.
2. DIMENSIONS MAY VARY ±1/2.
3. NOT FOR CONSTRUCTION PURPOSES UNLESS CERTIFIED.
4. DISCHARGE AND SUCTION FLANGES ANSI STANDARD FLAT FACE 125#.
5. 2 GROUT HOLES ARE PROVIDED IN TOP OF BASE.
6. WHEN MAKING SELECTIONS, DO NOT MIX 1750 R.P.M. AND 3500 R.P.M. PUMPS OR 7" AD 9" PUMPS.

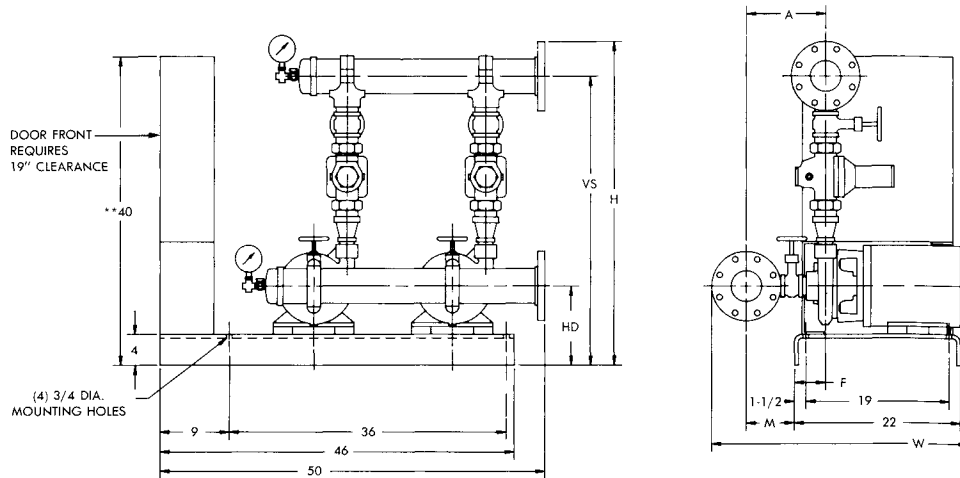
*ALWAYS USE "HD" DIMENSION FOR LARGEST PUMP SIZE SPECIFIED.

†54" WHEN 4" PRV IS USED.

AURORA - PC

DATED AUGUST 1987

DUPLEX - 3500 R.P.M. PRESSURE CONTROL SYSTEMS



PUMP SIZE	MTR. FR.	H.P.	P R V	HD	VS	H	A	F	M	W	SUCTION & DISCHARGE MANIFOLDS
1-1/4 x 1-1/2 x 7 3500 R.P.M.	145	2	A	10-1/4	34-5/16	38-13/16	10-11/16	9-7/16	1-1/4	33-3/8	4
	145	2	G	10-1/4	31-3/8	35-7/8	10-11/16	9-7/16	1-1/4	33-3/8	
	182	3	A	10-1/4	34-5/16	38-13/16	10-11/16	9-7/16	1-1/4	33-3/8	
	182	3	G	10-1/4	31-3/8	35-7/8	10-11/16	9-7/16	1-1/4	33-3/8	
	182	3	B	10-1/4	37	41-1/2	10-11/16	9-7/16	1-1/4	33-3/8	
	182	3	H	10-1/4	34-9/16	39-1/16	10-11/16	9-7/16	1-1/4	33-3/8	
	182	3	C	10-1/4	38-7/16	42-15/16	10-11/16	9-7/16	1-1/4	33-3/8	
	182	3	D	10-1/4	39-7/8	44-3/8	10-11/16	9-7/16	1-1/4	33-3/8	
	184	5	A	10-1/4	34-5/16	38-13/16	10-11/16	9-7/16	1-1/4	33-3/8	
	184	5	G	10-1/4	31-3/8	35-7/8	10-11/16	9-7/16	1-1/4	33-3/8	
	184	5	B	10-1/4	37	41-1/2	10-11/16	9-7/16	1-1/4	33-3/8	
	184	5	H	10-1/4	34-9/16	39-1/16	10-11/16	9-7/16	1-1/4	33-3/8	
	184	5	C	10-1/4	38-7/16	42-15/16	10-11/16	9-7/16	1-1/4	33-3/8	
	184	5	D	10-1/4	39-7/8	44-3/8	10-11/16	9-7/16	1-1/4	33-3/8	
	213	7-1/2	B	10-1/4	37	41-1/2	10-11/16	4-1/8	6-9/16	35-1/16	
	213	7-1/2	H	10-1/4	34-9/16	39-1/16	10-11/16	4-1/8	6-9/16	35-1/16	
	213	7-1/2	C	10-1/4	38-7/16	42-15/16	10-11/16	4-1/8	6-9/16	35-1/16	
	213	7-1/2	D	10-1/4	39-7/8	44-3/8	10-11/16	4-1/8	6-9/16	35-1/16	
1-1/2 x 2 x 7 3500 R.P.M.	184	5	D	10-1/4	39-3/4	44-1/4	11-1/16	9-3/8	1-11/16	33-13/16	4
	184	5	E	10-1/4	42-7/8	47-3/8	11-1/16	9-3/8	1-11/16	33-13/16	
	213	7-1/2	C	10-1/4	38-11/16	43-3/16	11-1/16	4-1/16	7	35-1/2	
	213	7-1/2	D	10-1/4	39-3/4	44-1/4	11-1/16	4-1/16	7	35-1/2	
	213	7-1/2	E	10-1/4	42-7/8	47-3/8	11-1/16	4-1/16	7	35-1/2	
	215	10	C	10-1/4	38-11/16	43-3/16	11-1/16	3-5/16	7-3/4	37-1/2	
	215	10	D	10-1/4	39-3/4	44-1/4	11-1/16	3-5/16	7-3/4	37-1/2	
215	10	E	10-1/4	42-7/8	47-3/8	11-1/16	3-5/16	7-3/4	37-1/2		
2 x 2-1/2 x 7A 3500 R.P.M.	184	5	F	10-1/4	41-13/16	46-5/16	12	9-1/4	2-3/4	34-7/8	4
	213	7-1/2	F	10-1/4	41-13/16	46-5/16	12	3-15/16	8-1/16	36-9/16	
	215	10	F	10-1/4	41-13/16	46-5/16	12	3-3/16	8-13/16	38-9/16	
	254	15	E	10-1/4	40	44-1/2	12	13/16	11-3/16	40-9/16	
	254	15	F	10-1/4	41-13/16	46-5/16	12	13/16	11-3/16	40-9/16	
	256	20	F	10-1/4	41-13/16	46-5/16	12	9/16†	12-9/16	44-9/16	
	213	7-1/2	F	10-1/4	42-13/16	47-13/16	12-3/4	3-15/16	8-13/16	37-13/16	5
	215	10	F	10-1/4	42-13/16	47-13/16	12-3/4	3-3/16	9-9/16	39-13/16	
	254	15	F	10-1/4	42-13/16	47-13/16	12-3/4	13/16	11-15/16	41-13/16	
	256	20	F	10-1/4	42-13/16	47-13/16	12-3/4	9/16†	13-5/16	45-13/16	
	213	7-1/2	F	10-1/4	43-5/16	48-13/16	13-1/8	3-15/16	9-3/16	38-11/16	
	215	10	F	10-1/4	43-5/16	48-13/16	13-1/8	3-3/16	9-15/16	40-11/16	6
	254	15	F	10-1/4	43-5/16	48-13/16	13-1/8	13/16	12-5/16	42-11/16	
	256	20	F	10-1/4	43-5/16	48-13/16	13-1/8	9/16†	13-11/16	46-11/16	

NOTES:

- ALL DIMENSIONS IN INCHES.
- DIMENSIONS MAY VARY ± 1/2.
- NOT FOR CONSTRUCTION PURPOSES UNLESS CERTIFIED.
- DISCHARGE AND SUCTION FLANGES AMERICAN STANDARD FLAT FACE 125#.
- 1 GROUT HOLE IS PROVIDED IN TOP OF BASE.

PRESSURE REDUCING VALVES									
DIRECT ACTING					PILOT OPERATED				
SIZE	1-1/2	2	2-1/2	2	2-1/2	3	1-1/4	1-1/2	4
CODE	A	B	C	D	E	F	G	H	J

†DISCHARGE CENTERLINE, "F" DIMENSION IS LEFT OF BASE FOR THESE PUMP SELECTIONS ONLY.

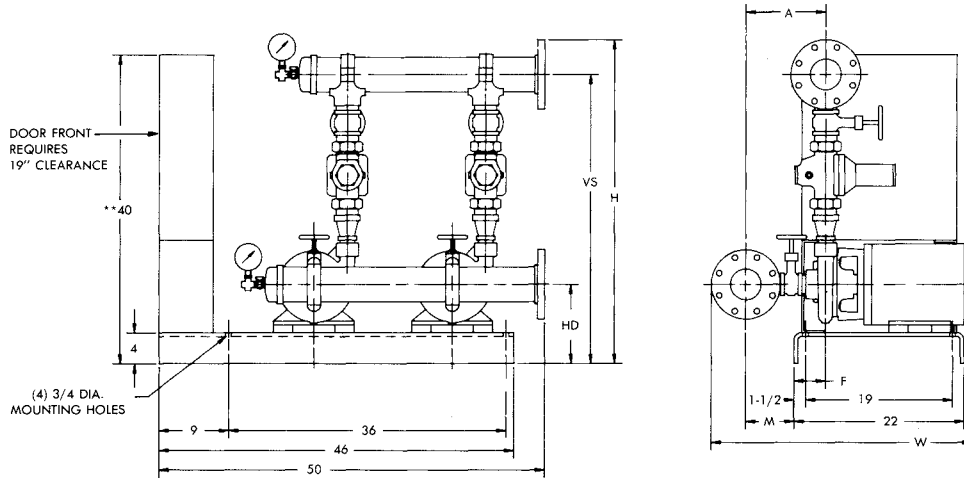
**PANEL HEIGHT 48" ON 208 VOLT 15 H.P. AND 20 H.P. ALSO 230 VOLT 20 H.P.

AURORA MODEL 762 PUMPS

AURORA - PC

DUPLEX - 3500 R.P.M.

PRESSURE CONTROL SYSTEMS



PUMP SIZE	MTR. FR.	H.P.	P R V	HD	VS	H	A	F	M	W	SUCTION & DISCHARGE MANIFOLDS
2-1/2 x 3 x 7B 3500 R.P.M.	254	15	F	11-1/4	43-13/16	48-5/16	13-1/16	11/16	12-3/8	41-3/4	4
	254	15	F	11-1/4	44-5/16	49-5/16	13-9/16	11/16	12-7/8	42-3/4	5
	256	20	F	11-1/4	44-5/16	49-5/16	13-9/16	11/16†	14-1/4	46-3/4	6
	215	10	J	11-1/4	52-5/16	57-13/16	14-1/16	3-1/16	11	41-3/4	
	254	15	J	11-1/4	52-5/16	57-13/16	14-1/16	11/16	13-3/8	43-3/4	
	256	20	J	11-1/4	52-5/16	57-13/16	14-1/16	11/16†	14-3/4	47-3/4	
	254	15	F	11-1/4	44-13/16	50-5/16	14-1/16	11/16	13-3/8	43-3/4	
256	20	F	11-1/4	44-13/16	50-5/16	14-1/16	11/16†	14-3/4	47-3/4		
1-1/2 x 2 x 9C 3500 R.P.M.	213	7-1/2	B	11-1/4	39-5/8	44-1/8	11-3/16	4-1/16	7-1/8	35-5/8	4
	213	7-1/2	H	11-1/4	34	38-1/2	11-3/16	4-1/16	7-1/8	35-5/8	
	215	10	B	11-1/4	39-5/8	44-1/8	11-3/16	3-5/16	7-7/8	37-5/8	
	215	10	C	11-1/4	41-1/16	45-9/16	11-3/16	3-5/16	7-7/8	37-5/8	
	215	10	D	11-1/4	42-1/8	46-5/8	11-3/16	3-5/16	7-7/8	37-5/8	
	215	10	H	11-1/4	34	38-1/2	11-3/16	3-5/16	7-7/8	37-5/8	
	254	15	B	11-1/4	39-5/8	44-1/8	11-3/16	15/16	10-1/4	39-5/8	
	254	15	C	11-1/4	41-1/16	45-9/16	11-3/16	15/16	10-1/4	39-5/8	
	254	15	D	11-1/4	42-1/8	46-5/8	11-3/16	15/16	10-1/4	39-5/8	
	254	15	E	11-1/4	45-1/4	49-3/4	11-3/16	15/16	10-1/4	39-5/8	
	254	15	H	11-1/4	34	38-1/2	11-3/16	15/16	10-1/4	39-5/8	
	256	20	C	11-1/4	41-1/16	45-9/16	11-3/16	7/16†	11-5/8	43-5/8	
	256	20	D	11-1/4	42-1/8	46-5/8	11-3/16	7/16†	11-5/8	43-5/8	
	256	20	E	11-1/4	45-1/4	49-3/4	11-3/16	7/16†	11-5/8	43-5/8	
2 x 2-1/2 x 9 3500 R.P.M.	254	15	F	11-3/4	45-3/16	49-11/16	12	13/16	11-3/16	40-9/16	4
	256	20	F	11-3/4	45-3/16	49-11/16	12	9/16†	12-9/16	44-9/16	5
	254	15	F	11-3/4	45-11/16	50-11/16	12-3/4	13/16	11-15/16	41-13/16	
	256	20	F	11-3/4	45-11/16	50-11/16	12-3/4	9/16†	13-5/16	45-13/16	
	254	15	F	11-3/4	46-3/16	51-11/16	13-1/8	13/16	12-5/16	42-11/16	6
256	20	F	11-3/4	46-3/16	51-11/16	13-1/8	9/16†	13-11/16	46-11/16		

- NOTES:
- ALL DIMENSIONS IN INCHES.
 - DIMENSIONS MAY VARY ± 1/2.
 - NOT FOR CONSTRUCTION PURPOSES UNLESS CERTIFIED.
 - DISCHARGE AND SUCTION FLANGES AMERICAN STANDARD FLAT FACE 125#.
 - 1 GROUT HOLE IS PROVIDED IN TOP OF BASE.

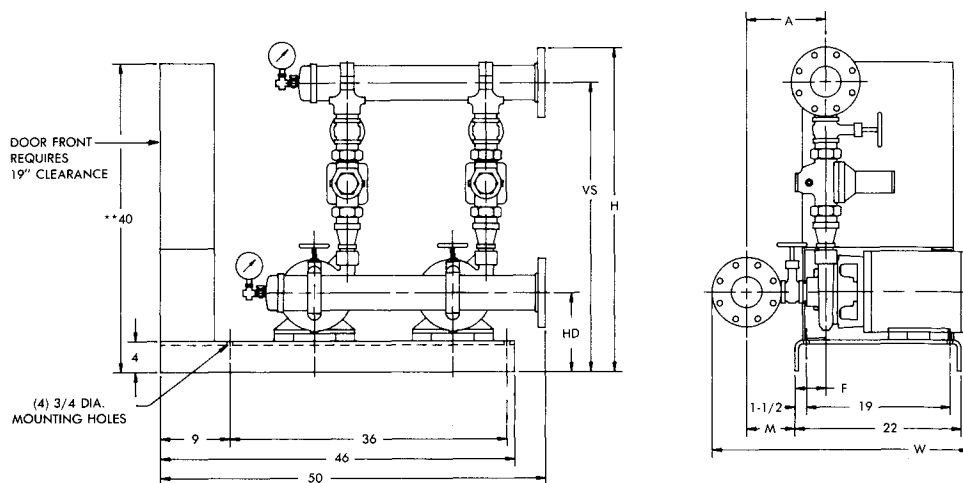
PRESSURE REDUCING VALVES									
DIRECT ACTING					PILOT OPERATED				
SIZE	1-1/2	2	2-1/2	3	1-1/4	1-1/2	2	2-1/2	3
CODE	A	B	C	D	E	F	G	H	J

†DISCHARGE CENTERLINE, "F" DIMENSION IS LEFT OF BASE FOR THESE PUMP SELECTIONS ONLY.

**PANEL HEIGHT 48" ON 208 VOLT 15 H.P. AND 20 H.P. ALSO 230 VOLT 20 H.P.

AURORA MODEL 762 PUMPS

AURORA - PC DUPLIX - 1750 R.P.M. PRESSURE CONTROL SYSTEMS



PUMP SIZE	MTR. FR.	H.P.	P R V	HD	VS	H	A	F	M	W	SUCTION & DISCHARGE MANIFOLDS
1-1/2 x 2 x 9C 1750 R.P.M.	143	1	A	11-1/4	33-7/8	38-3/8	11-3/16	10-3/16	1	32-7/8	4
	143	1	B	11-1/4	39-5/8	44-1/8	11-3/16	10-3/16	1	32-7/8	
	143	1	G	11-1/4	36-15/16	41-1/16	11-3/16	10-3/16	1	32-7/8	
	143	1	H	11-1/4	34	38-1/2	11-3/16	10-3/16	1	32-7/8	
	145	1-1/2	A	11-1/4	33-7/8	38-3/8	11-3/16	10-3/16	1	33-7/8	
	145	1-1/2	B	11-1/4	39-5/8	44-1/8	11-3/16	10-3/16	1	33-7/8	
	145	1-1/2	G	11-1/4	36-15/16	41-1/16	11-3/16	10-3/16	1	33-7/8	
	145	1-1/2	H	11-1/4	34	38-1/2	11-3/16	10-3/16	1	33-7/8	
	145	2	A	11-1/4	33-7/8	38-3/8	11-3/16	10-3/16	1	33-7/8	
	145	2	B	11-1/4	39-5/8	44-1/8	11-3/16	10-3/16	1	33-7/8	
	145	2	C	11-1/4	41-1/16	45-9/16	11-3/16	10-3/16	1	33-7/8	
	145	2	D	11-1/4	42-1/8	46-5/8	11-3/16	10-3/16	1	33-7/8	
	145	2	G	11-1/4	36-15/16	41-7/16	11-3/16	10-3/16	1	33-7/8	
	145	2	H	11-1/4	34	38-1/2	11-3/16	10-3/16	1	33-7/8	
	182	3	A	11-1/4	33-7/8	38-3/8	11-3/16	10-3/16	1	33-7/8	
	182	3	B	11-1/4	39-5/8	44-1/8	11-3/16	10-3/16	1	33-7/8	
	182	3	C	11-1/4	41-1/16	45-9/16	11-3/16	10-3/16	1	33-7/8	
	182	3	D	11-1/4	42-1/8	46-5/8	11-3/16	10-3/16	1	33-7/8	
182	3	G	11-1/4	36-15/16	41-7/16	11-3/16	10-3/16	1	33-7/8		
182	3	H	11-1/4	34	38-1/2	11-3/16	10-3/16	1	33-7/8		
2 x 2-1/2 x 9 1750 R.P.M.	145	2	C	11-3/4	42-9/16	47-1/16	12	9-5/16	2-11/16	34-13/16	4
	145	2	D	11-3/4	37-11/16	42-3/16	12	9-5/16	2-11/16	34-13/16	
	145	2	E	11-3/4	42-7/8	47-3/8	12	9-5/16	2-11/16	34-13/16	
	182	3	B	11-3/4	37-11/16	42-3/16	12	9-5/16	2-11/16	34-13/16	
	182	3	C	11-3/4	42-9/16	47-1/16	12	9-5/16	2-11/16	34-13/16	
	182	3	D	11-3/4	37-11/16	42-3/16	12	9-5/16	2-11/16	34-13/16	
	182	3	E	11-3/4	42-7/8	47-3/8	12	9-5/16	2-11/16	34-13/16	
	182	3	H	11-3/4	38-5/16	42-13/16	12	9-5/16	2-11/16	34-13/16	
	184	5	C	11-3/4	42-9/16	47-1/16	12	9-5/16	2-11/16	34-13/16	
	184	5	D	11-3/4	37-11/16	42-3/16	12	9-5/16	2-11/16	34-13/16	
184	5	E	11-3/4	42-7/8	47-3/8	12	9-5/16	2-11/16	34-13/16		

NOTES:

1. ALL DIMENSIONS IN INCHES.
2. DIMENSIONS MAY VARY ± 1/2.
3. NOT FOR CONSTRUCTION PURPOSES UNLESS CERTIFIED.
4. DISCHARGE AND SUCTION FLANGES AMERICAN STANDARD FLAT FACE 125#.
5. 1 GROUT HOLE IS PROVIDED IN TOP OF BASE.

PRESSURE REDUCING VALVES									
DIRECT ACTING					PILOT OPERATED				
SIZE	1-1/2	2	2-1/2	2	2-1/2	3	1-1/4	1-1/2	4
CODE	A	B	C	D	E	F	G	H	J

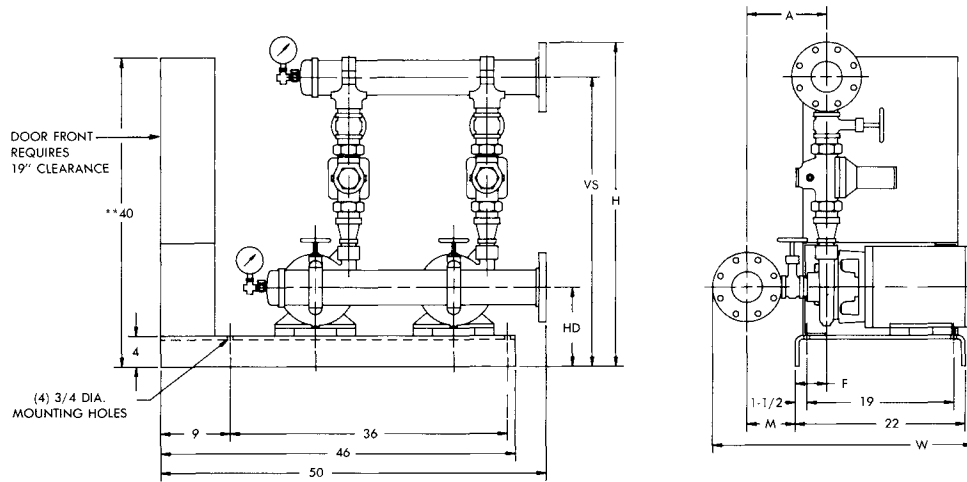
**PANEL HEIGHT 48" ON 208 VOLT 15 H.P. AND 20 H.P.
ALSO 230 VOLT 20 H.P.

AURORA MODEL 762 PUMPS

AURORA - PC

DUPLEX - 1750 R.P.M.

PRESSURE CONTROL SYSTEMS



PUMP SIZE	MTR. FR.	H.P.	P R V	HD	VS	H	A	F	M	W	SUCTION & DISCHARGE MANIFOLDS	
2-1/2 x 3 x 9 1750 R.P.M.	182	3	C	11-3/4	38-13/16	43-5/16	13-1/16	9-3/16	3-7/8	36	4	
	182	3	D	11-3/4	40-15/16	45-7/16	13-1/16	9-3/16	3-7/8	36		
	182	3	E	11-3/4	40-1/8	44-5/8	13-1/16	9-3/16	3-7/8	36		
	182	3	F	11-3/4	45-11/16	50-3/16	13-1/16	9-3/16	3-7/8	36		
	184	5	C	11-3/4	38-13/16	43-5/16	13-1/16	9-3/16	3-7/8	36		
	184	5	D	11-3/4	40-15/16	45-7/16	13-1/16	9-3/16	3-7/8	36		
	184	5	E	11-3/4	40-1/8	44-5/8	13-1/16	9-3/16	3-7/8	36		
	184	5	F	11-3/4	45-11/16	50-3/16	13-1/16	9-3/16	3-7/8	36		
	213	7-1/2	F	11-3/4	45-11/16	50-3/16	13-1/16	3-13/16	9-1/4	37-3/4		
	182	3	E	11-3/4	40-7/8	45-7/8	13-9/16	9-3/16	3-7/8	36-1/2		5
	182	3	F	11-3/4	46-3/16	51-3/16	13-9/16	9-3/16	3-7/8	36-1/2		
	184	5	E	11-3/4	40-7/8	45-7/8	13-9/16	9-3/16	3-7/8	36-1/2		
	184	5	F	11-3/4	46-3/16	51-3/16	13-9/16	9-3/16	3-7/8	36-1/2		
	2 x 3 x 11 1750 R.P.M.	213	7-1/2	F	11-3/4	46-3/16	51-3/16	13-9/16	3-13/16	9-3/4		38-1/4
184		5	F	11-3/4	46-11/16	52-3/16	14-1/16	9-3/16	3-7/8	37		
213		7-1/2	F	11-3/4	46-11/16	52-3/16	14-1/16	3-13/16	10-1/4	38-3/4		
213		7-1/2	C	12-1/4	44-1/16	48-9/16	13-7/16	3-7/8	9-9/16	38-1/16	4	
213		7-1/2	D	12-1/4	39-3/16	43-11/16	13-7/16	3-7/8	9-9/16	38-1/16		
213		7-1/2	E	12-1/4	44-3/8	48-7/8	13-7/16	3-7/8	9-9/16	38-1/16		
215		10	E	12-1/4	44-3/8	48-7/8	13-7/16	3-1/8	10-5/16	40-1/16		
213		7-1/2	F	12-1/4	46-11/16	51-3/16	13-7/16	3-7/8	9-9/16	38-1/16	5	
213	7-1/2	F	12-1/4	47-3/16	52-3/16	13-15/16	3-7/8	10-1/16	38-1/16			
215	10	F	12-1/4	47-3/16	52-3/16	13-15/16	3-1/8	10-13/16	40-1/16			
213	7-1/2	F	12-1/4	47-11/16	53-3/16	14-7/16	3-7/8	10-9/16	38-1/16	6		
215	10	F	12-1/4	47-11/16	53-3/16	14-7/16	3-1/8	11-5/16	40-1/16			
1-1/2 x 2 x 12 1750 R.P.M.	213	7-1/2	A	13	36-5/8	41-1/8	11-5/16	3-15/16	7-3/8	35-7/8	4	
	213	7-1/2	G	13	39-11/16	44-3/16	11-5/16	3-15/16	7-3/8	35-7/8		
	213	7-1/2	B	13	42-3/8	46-7/8	11-5/16	3-15/16	7-3/8	35-7/8		
	213	7-1/2	H	13	36-3/4	41-1/4	11-5/16	3-15/16	7-3/8	35-7/8		
	213	7-1/2	C	13	43-9/16	48-1/16	11-5/16	3-15/16	7-3/8	35-7/8		
	213	7-1/2	D	13	45-1/4	49-3/4	11-5/16	3-15/16	7-3/8	35-7/8		
	213	7-1/2	E	13	48	52-1/2	11-5/16	3-15/16	7-3/8	35-7/8		
	215	10	C	13	43-9/16	48-1/16	11-5/16	3-3/16	8-1/8	37-7/8		
	215	10	D	13	45-1/4	49-3/4	11-5/16	3-3/16	8-1/8	37-7/8		
	215	10	E	13	48	52-1/2	11-5/16	3-3/16	8-1/8	37-7/8		

- NOTES:
- ALL DIMENSIONS IN INCHES.
 - DIMENSIONS MAY VARY ± 1/2.
 - NOT FOR CONSTRUCTION PURPOSES UNLESS CERTIFIED.
 - DISCHARGE AND SUCTION FLANGES AMERICAN STANDARD FLAT FACE 125#.
 - 1 GROUT HOLE IS PROVIDED IN TOP OF BASE.

PRESSURE REDUCING VALVES									
DIRECT ACTING					PILOT OPERATED				
SIZE	1-1/2	2	2-1/2	2	2-1/2	3	1-1/4	1-1/2	4
CODE	A	B	C	D	E	F	G	H	J

**PANEL HEIGHT 48" ON 208 VOLT 15 H.P. AND 20 H.P.
 ALSO 230 VOLT 20 H.P.

AURORA MODEL 762 PUMPS

AURORA - PC

DUPLEX - 1750 R.P.M.

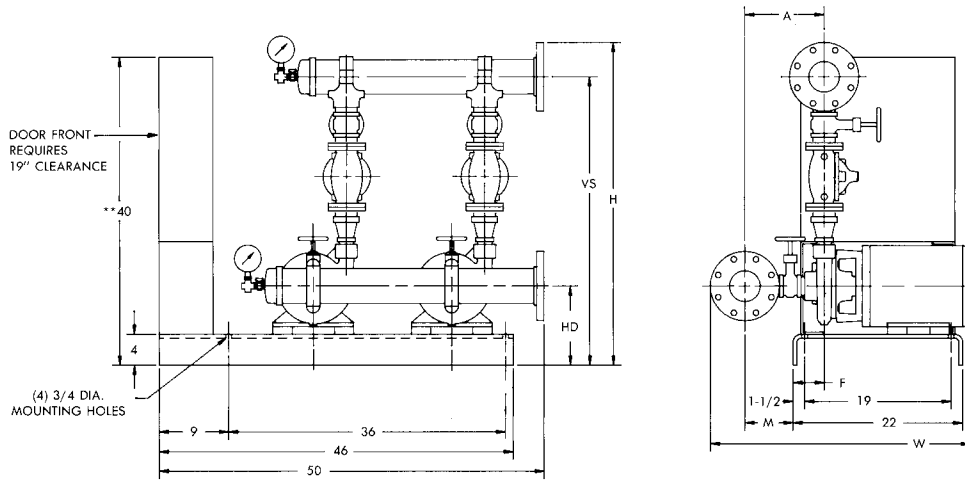
PRESSURE CONTROL SYSTEMS

SECTION 750/760 PAGE 213

DATED JANUARY 1999

SUPERSEDES PAGE 213

DATED AUGUST 1987



PUMP SIZE	MTR. FR.	H.P.	P R V	HD	VS	H	A	F	M	W	SUCTION & DISCHARGE MANIFOLDS
2-1/2 x 3 x 12 1750 R.P.M.	254	15	DP	13-1/4	42-5/8	47-1/8	13-1/16	9/16	12-1/2	41-7/8	4
	213	7-1/2	EP	13-1/4	48-3/16	52-11/16	13-1/16	3-11/16	9-3/8	37-7/8	
	215	10	EP	13-1/4	48-3/16	52-11/16	13-1/16	2-15/16	10-1/8	39-7/8	
	254	15	EP	13-1/4	48-3/16	52-11/16	13-1/16	9/16	12-1/2	41-7/8	
	213	7-1/2	EP	13-1/4	48-11/16	53-11/16	13-9/16	3-11/16	9-7/8	38-7/8	5
	215	10	EP	13-1/4	48-11/16	53-11/16	13-9/16	2-15/16	10-5/8	40-7/8	
	254	15	EP	13-1/4	48-11/16	53-11/16	13-9/16	9/16	13	42-7/8	
	256	20	EP	13-1/4	48-11/16	53-11/16	13-9/16	13/16†	14-3/8	46-7/8	
	215	10	EP	13-1/4	49-3/16	54-11/16	14-1/16	2-15/16	11-1/8	41-7/8	6
	254	15	EP	13-1/4	49-3/16	54-11/16	14-1/16	9/16	13-1/2	43-7/8	
	256	20	EP	13-1/4	49-3/16	54-11/16	14-1/16	13/16†	14-7/8	47-7/8	
	254	15	FP	13-1/4	56-11/16	62-3/16	14-1/16	9/16	13-1/2	43-7/8	
256	20	FP	13-1/4	56-11/16	62-3/16	14-1/16	13/16†	14-7/8	47-7/8		

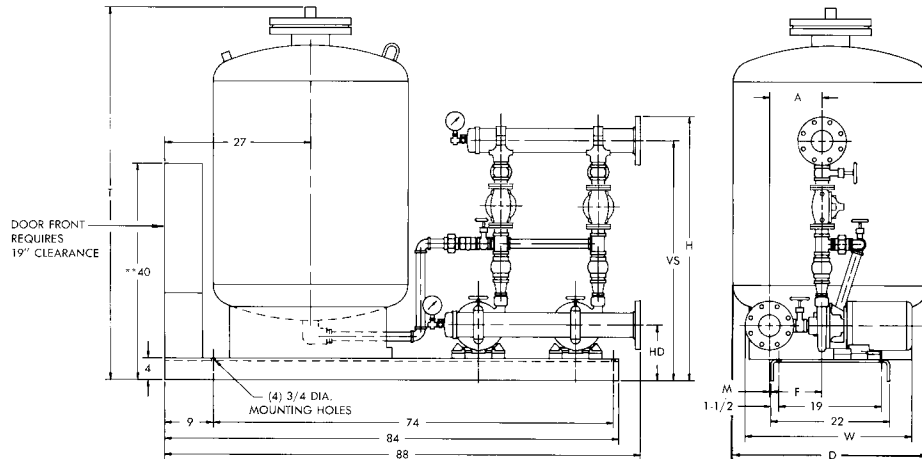
NOTES:

1. ALL DIMENSIONS IN INCHES.
2. DIMENSIONS MAY VARY ±1/2.
3. NOT FOR CONSTRUCTION PURPOSES UNLESS CERTIFIED.
4. DISCHARGE AND SUCTION FLANGES ANSI STANDARD FLAT FACE 125#.
5. 1 GROUT HOLE IS PROVIDED IN TOP OF BASE.

PRESSURE REDUCING VALVES									
	DIRECT ACTING				PILOT OPERATED				
SIZE	1-1/2	2	2-1/2	2	2-1/2	3	1-1/4	1-1/2	4
CODE	27AA	27AB	27AC	CP	DP	EP	AP	BP	FP

†DISCHARGE CENTERLINE, "F" DIMENSION IS LEFT OF BASE FOR THESE PUMP SELECTIONS ONLY.

**PANEL HEIGHT 48" ON 208 VOLT 15 H.P. AND 20 H.P. ALSO 230 VOLT 20 H.P.



PUMP SIZE	MTR. FR.	H.P.	P R V	HD	VS	H	A	F	M	W	SUCTION & DISCHARGE MANIFOLDS
1-1/4 x 1-1/2 x 7 3500 R.P.M.	145	2	27AA	10-1/4	44-5/16	48-13/16	10-11/16	9-7/16	1-1/4	33-3/8	4
	145	2	AP	10-1/4	40-7/8	45-5/8	10-11/16	9-7/16	1-1/4	33-3/8	
	182	3	27AA	10-1/4	44-5/16	48-13/16	10-11/16	9-7/16	1-1/4	33-3/8	
	182	3	AP	10-1/4	40-7/8	45-5/8	10-11/16	9-7/16	1-1/4	33-3/8	
	182	3	27AB	10-1/4	48-3/16	52-11/16	10-11/16	9-7/16	1-1/4	33-3/8	
	182	3	BP	10-1/4	44-9/16	49-1/16	10-11/16	9-7/16	1-1/4	33-3/8	
	182	3	27AC	10-1/4	49-3/16	53-11/16	10-11/16	9-7/16	1-1/4	33-3/8	
	182	3	CP	10-1/4	51-1/16	55-9/16	10-11/16	9-7/16	1-1/4	33-3/8	
	184	5	27AA	10-1/4	44-5/16	48-13/16	10-11/16	9-7/16	1-1/4	33-3/8	
	184	5	AP	10-1/4	40-7/8	45-5/8	10-11/16	9-7/16	1-1/4	33-3/8	
	184	5	27AB	10-1/4	48-3/16	52-11/16	10-11/16	9-7/16	1-1/4	33-3/8	
	184	5	BP	10-1/4	44-9/16	49-1/16	10-11/16	9-7/16	1-1/4	33-3/8	
	184	3	27AC	10-1/4	49-3/16	53-11/16	10-11/16	9-7/16	1-1/4	33-3/8	
	184	5	CP	10-1/4	51-1/16	55-9/16	10-11/16	9-7/16	1-1/4	33-3/8	
	213	7-1/2	27AB	10-1/4	48-3/16	52-11/16	10-11/16	4-1/8	6-9/16	35-1/16	
	213	7-1/2	BP	10-1/4	44-9/16	49-1/16	10-11/16	4-1/8	6-9/16	35-1/16	
	213	7-1/2	27AC	10-1/4	49-3/16	53-11/16	10-11/16	4-1/8	6-9/16	35-1/16	
	213	7-1/2	CP	10-1/4	51-1/16	55-9/16	10-11/16	4-1/8	6-9/16	35-1/16	
1-1/2 x 2 x 7 3500 R.P.M.	184	5	CP	10-1/4	50-15/16	55-7/16	11-1/16	9-3/8	1-11/16	33-13/16	4
	184	5	DP	10-1/4	53-5/8	58-1/8	11-1/16	9-3/8	1-11/16	33-13/16	
	213	7-1/2	27AC	10-1/4	49-7/16	53-15/16	11-1/16	4-1/16	7	35-1/2	
	213	7-1/2	CP	10-1/4	50-15/16	55-7/16	11-1/16	4-1/16	7	35-1/2	
	213	7-1/2	DP	10-1/4	53-5/8	58-1/8	11-1/16	4-1/16	7	35-1/2	
	215	10	27AC	10-1/4	49-7/16	53-15/16	11-1/16	3-5/16	7-3/4	37-1/2	
	215	10	CP	10-1/4	50-15/16	55-7/8	11-1/16	3-5/16	7-3/4	37-1/2	
	215	10	DP	10-1/4	53-5/8	58-1/8	11-1/16	3-5/16	7-3/4	37-1/2	
2 x 2-1/2 x 7A 3500 R.P.M.	184	5	EP	10-1/4	53-5/16	57-13/16	12	9-1/4	2-3/4	34-7/8	4
	213	7-1/2	EP	10-1/4	53-5/16	57-13/16	12	3-15/16	8-1/16	36-9/16	
	215	10	EP	10-1/4	53-5/16	57-13/16	12	3-3/16	8-13/16	38-9/16	
	254	15	DP	10-1/4	50-3/4	55-1/4	12	13/16	11-3/16	40-9/16	
	254	15	EP	10-1/4	53-5/16	57-13/16	12	13/16	11-3/16	40-9/16	
	256	20	EP	10-1/4	53-5/16	57-13/16	12	9/16†	12-9/16	44-9/16	
	213	7-1/2	EP	10-1/4	54-5/16	59-5/16	12-3/4	3-15/16	8-13/16	37-13/16	5
	215	10	EP	10-1/4	54-5/16	59-5/16	12-3/4	3-3/16	9-9/16	39-13/16	
	254	15	EP	10-1/4	54-5/16	59-5/16	12-3/4	13/16	11-15/16	41-13/16	
	256	20	EP	10-1/4	54-5/16	59-5/16	12-3/4	9/16†	13-5/16	45-13/16	
	213	7-1/2	EP	10-1/4	54-13/16	60-5/16	13-1/8	3-15/16	9-3/16	38-11/16	6
	215	10	EP	10-1/4	54-13/16	60-5/16	13-1/8	3-13/16	9-15/16	40-11/16	
	254	15	EP	10-1/4	54-13/16	60-5/16	13-1/8	13/16	12-5/16	42-11/16	
	256	20	EP	10-1/4	54-13/16	60-5/16	13-1/8	9/16†	13-11/16	46-11/16	

PRESSURE REDUCING VALVES									
DIRECT ACTING					PILOT OPERATED				
SIZE	1-1/2	2	2-1/2	4	2-1/2	3	1-1/4	1-1/2	4
CODE	27AA	27AB	27AC	CP	DP	EP	AP	BP	FP

TANK SIZE (GALLONS)	79	106	132	158	170	211
T	59	53	61	69	80	67
D	24	30	30	30	30	36

NOTES:

- ALL DIMENSIONS IN INCHES.
- DIMENSIONS MAY VARY ±1/2.
- NOT FOR CONSTRUCTION PURPOSES UNLESS CERTIFIED.
- DISCHARGE AND SUCTION FLANGES ANSI STANDARD FLAT FACE 125#.
- 1 GROUT HOLE IS PROVIDED IN TOP OF BASE.

†DISCHARGE CENTERLINE, "F" DIMENSION IS LEFT OF BASE FOR THESE PUMP SELECTIONS ONLY.

**PANEL HEIGHT 48" ON 208 VOLT 15 H.P. AND 20 H.P. ALSO 230 VOLT 20 H.P.

AURORA MODEL 762 PUMPS

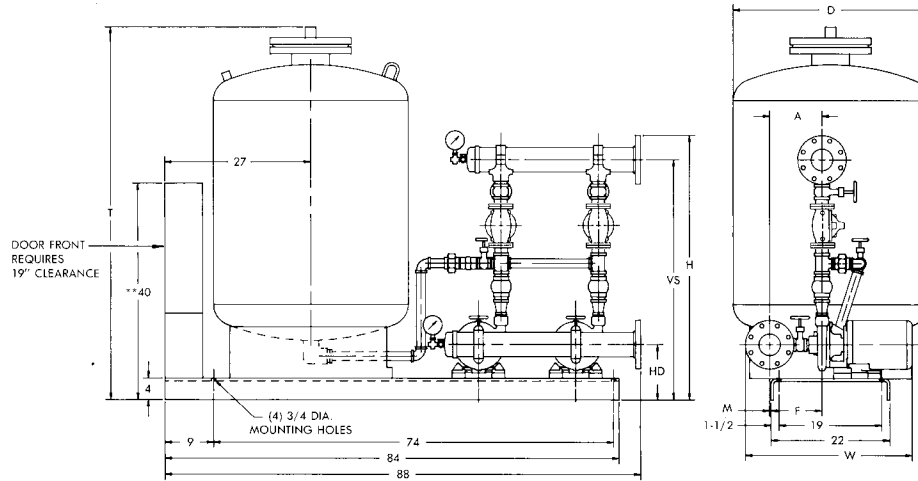
AURORA - PC DUPLEX - WITH TANK 3500 R.P.M. PRESSURE CONTROL SYSTEMS

SECTION 750/760 PAGE 215

DATED JANUARY 1999

SUPERSEDES PAGE 215

DATED JUNE 1994



PUMP SIZE	MTR. FR.	H.P.	P R V	HD	VS	H	A	F	M	W	SUCTION & DISCHARGE MANIFOLDS
2-1/2 x 3 x 7B 3500 R.P.M.	254	15	EP	11-1/4	55-5/16	59-13/16	13-1/16	11/16	12-3/8	41-3/4	4
	254	15	EP	11-1/4	55-13/16	60-13/16	13-9/16	11/16	12-7/8	42-3/4	5
	256	20	EP	11-1/4	55-13/16	60-13/16	13-9/16	11/16†	14-1/4	46-3/4	6
	215	10	FP	11-1/4	66-1/16	71-9/16	14-1/16	3-1/16	11	41-3/4	
	254	15	FP	11-1/4	66-1/16	71-9/16	14-1/16	11/16	13-3/8	43-3/4	
	256	20	FP	11-1/4	66-1/16	71-9/16	14-1/16	11/16†	14-3/4	47-3/4	
	254	15	EP	11-1/4	56-5/16	61-13/16	14-1/16	11/16	13-3/8	43-3/4	
256	20	EP	11-1/4	56-5/16	61-13/16	14-1/16	11/16†	14-3/4	47-3/4		
1-1/2 x 2 x 9C 3500 R.P.M.	213	7-1/2	27AB	11-1/4	50-13/16	55-5/16	11-3/16	4-1/16	7-1/8	35-5/8	4
	213	7-1/2	BP	11-1/4	44	48-1/2	11-3/16	4-1/16	7-1/8	35-5/8	
	215	10	27AB	11-1/4	50-13/16	55-5/16	11-3/16	3-5/16	7-7/8	37-5/8	
	215	10	27AC	11-1/4	51-13/16	56-5/16	11-3/16	3-5/16	7-7/8	37-5/8	
	215	10	CP	11-1/4	53-5/16	57-13/16	11-3/16	3-5/16	7-7/8	37-5/8	
	215	10	BP	11-1/4	44	48-1/2	11-3/16	3-5/16	7-7/8	37-5/8	
	254	15	27AB	11-1/4	50-13/16	55-5/16	11-3/16	15/16	10-1/4	39-5/8	
	254	15	27AC	11-1/4	51-13/16	56-5/16	11-3/16	15/16	10-1/4	39-5/8	
	254	15	CP	11-1/4	53-5/16	57-13/16	11-3/16	15/16	10-1/4	39-5/8	
	254	15	DP	11-1/4	56	60-1/2	11-3/16	15/16	10-1/4	39-5/8	
	254	15	BP	11-1/4	44	48-1/2	11-3/16	15/16	10-1/4	39-5/8	
	256	20	27AC	11-1/4	51-13/16	56-5/16	11-3/16	7/16†	11-5/8	43-5/8	
	256	20	CP	11-1/4	53-5/16	57-13/16	11-3/16	7/16†	11-5/8	43-5/8	
	256	20	DP	11-1/4	56	60-1/2	11-3/16	7/16†	11-5/8	43-5/8	
2 x 2-1/2 x 9 3500 R.P.M.	254	15	EP	11-3/4	56-11/16	61-3/16	12	13/16	11-3/16	40-9/16	4
	256	20	EP	11-3/4	56-11/16	61-3/16	12	9/16†	12-9/16	44-9/16	5
	254	15	EP	11-3/4	57-3/16	62-3/16	12-3/4	13/16	11-15/16	41-13/16	
	256	20	EP	11-3/4	57-3/16	62-3/16	12-3/4	9/16†	13-5/16	45-13/16	6
	254	15	EP	11-3/4	57-11/16	63-3/16	13-1/8	13/16	12-5/16	42-11/16	
	256	20	EP	11-3/4	57-11/16	63-3/16	13-1/8	9/16†	13-11/16	46-11/16	

PRESSURE REDUCING VALVES									
DIRECT ACTING					PILOT OPERATED				
SIZE	1-1/2	2	2-1/2	2	2-1/2	3	1-1/4	1-1/2	4
CODE	27AA	27AB	27AC	CP	DP	EP	AP	BP	FP

TANK SIZE (GALLONS)	79	106	132	158	170	211
T	59	53	61	69	80	70
D	24	30	30	30	30	36

- NOTES:
- ALL DIMENSIONS IN INCHES.
 - DIMENSIONS MAY VARY ±1/2.
 - NOT FOR CONSTRUCTION PURPOSES UNLESS CERTIFIED.
 - DISCHARGE AND SUCTION FLANGES ANSI STANDARD FLAT FACE 125#.
 - 1 GROUT HOLE IS PROVIDED IN TOP OF BASE.

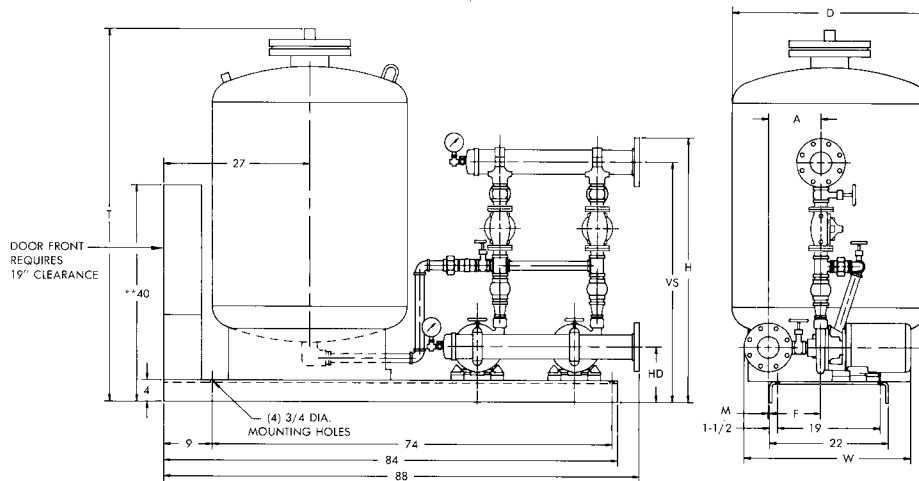
†DISCHARGE CENTERLINE, "F" DIMENSION IS LEFT OF BASE FOR THESE PUMP SELECTIONS ONLY.

**PANEL HEIGHT 48" ON 208 VOLT 15 H.P. AND 20 H.P. ALSO 230 VOLT 20 H.P.

**AURORA - PC
 DUPLEX - WITH TANK**

1750 R.P.M.

PRESSURE CONTROL SYSTEMS



PUMP SIZE	MTR. FR.	H.P.	P R V	HD	VS	H	A	F	M	W	SUCTION & DISCHARGE MANIFOLDS
1-1/2 x 2 x 9C 1750 R.P.M.	143	1	27AA	11-1/4	43-7/8	48-3/8	11-3/16	10-3/16	1	32-7/8	4
	143	1	27AB	11-1/4	50-13/16	55-5/16	11-3/16	10-3/16	1	32-7/8	
	143	1	AP	11-1/4	46-7/16	50-15/16	11-3/16	10-3/16	1	32-7/8	
	143	1	BP	11-1/4	44	48-1/8	11-3/16	10-3/16	1	32-7/8	
	145	1-1/2	27AA	11-1/4	43-7/8	48-3/8	11-3/16	10-3/16	1	33-7/8	
	145	1-1/2	27AB	11-1/4	50-13/16	55-5/16	11-3/16	10-3/16	1	33-7/8	
	145	1-1/2	AP	11-1/4	46-7/16	50-15/16	11-3/16	10-3/16	1	33-7/8	
	145	1-1/2	BP	11-1/4	44	48-1/2	11-3/16	10-3/16	1	33-7/8	
	145	2	27AA	11-1/4	43-7/8	48-3/8	11-3/16	10-3/16	1	33-7/8	
	145	2	27AB	11-1/4	50-13/16	55-5/16	11-3/16	10-3/16	1	33-7/8	
	145	2	27AC	11-1/4	51-13/16	56-5/16	11-3/16	10-3/16	1	33-7/8	
	145	2	CP	11-1/4	53-5/16	57-13/16	11-3/16	10-3/16	1	33-7/8	
	145	2	AP	11-1/4	46-7/16	50-15/16	11-3/16	10-3/16	1	33-7/8	
	145	2	BP	11-1/4	44	48-1/2	11-3/16	10-3/16	1	33-7/8	
	182	3	27AA	11-1/4	43-7/8	48-3/8	11-3/16	10-3/16	1	33-7/8	
	182	3	27AB	11-1/4	50-13/16	55-5/16	11-3/16	10-3/16	1	33-7/8	
	182	3	27AC	11-1/4	51-13/16	56-5/16	11-3/16	10-3/16	1	33-7/8	
	182	3	CP	11-1/4	53-5/16	57-13/16	11-3/16	10-3/16	1	33-7/8	
	182	3	BP	11-1/4	44	48-1/2	11-3/16	10-3/16	1	33-7/8	
	2 x 2-1/2 x 9 1750 R.P.M.	145	2	27AC	11-3/4	53-5/16	57-13/16	12	9-5/16	2-11/16	
145		2	CP	11-3/4	48-7/8	53-3/8	12	9-5/16	2-11/16	34-13/16	
145		2	DP	11-3/4	53-5/8	58-1/8	12	9-5/16	2-11/16	34-13/16	
182		3	27AB	11-3/4	48-7/8	53-3/8	12	9-5/16	2-11/16	34-13/16	
182		3	27AC	11-3/4	53-5/16	57-13/16	12	9-5/16	2-11/16	34-13/16	
182		3	CP	11-3/4	48-7/8	53-3/8	12	9-5/16	2-11/16	34-13/16	
182		3	DP	11-3/4	53-5/8	58-1/8	12	9-5/16	2-11/16	34-13/16	
182		3	BP	11-3/4	48-5/16	52-13/16	12	9-5/16	2-11/16	34-13/16	
184		5	27AC	11-3/4	53-5/16	57-13/16	12	9-5/16	2-11/16	34-13/16	
184		5	CP	11-3/4	48-7/8	53-3/8	12	9-5/16	2-11/16	34-13/16	
184	5	DP	11-3/4	53-5/8	58-1/8	12	9-5/16	2-11/16	34-13/16		

PRESSURE REDUCING VALVES									
DIRECT ACTING					PILOT OPERATED				
SIZE	1-1/2	2	2-1/2	2	2-1/2	3	1-1/4	1-1/2	4
CODE	27AA	27AB	27AC	CP	DP	EP	AP	BP	FP

TANK SIZE (GALLONS)	79	106	132	158	170	211
T	59	53	61	69	80	67
D	24	30	30	30	30	36

NOTES:

1. ALL DIMENSIONS IN INCHES.
2. DIMENSIONS MAY VARY ±1/2.
3. NOT FOR CONSTRUCTION PURPOSES UNLESS CERTIFIED.
4. DISCHARGE AND SUCTION FLANGES ANSI STANDARD FLAT FACE 125#.
5. 1 GROUT HOLE IS PROVIDED IN TOP OF BASE.

**PANEL HEIGHT 48" ON 208 VOLT 15 H.P. AND 20 H.P.
 ALSO 230 VOLT 20 H.P.

AURORA MODEL 762 PUMPS

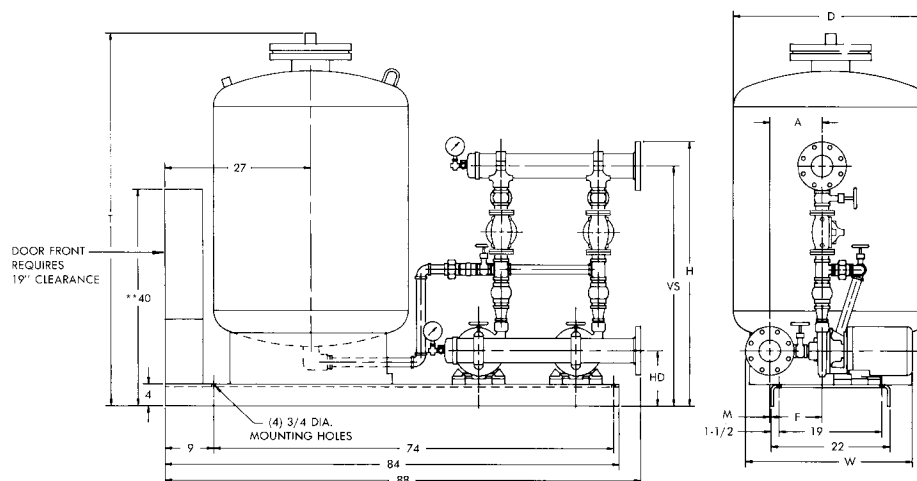
AURORA - PC DUPLEX - WITH TANK 1750 R.P.M. PRESSURE CONTROL SYSTEMS

SECTION 750/760 PAGE 217

DATED JANUARY 1999

SUPERSEDES PAGE 217

DATED JUNE 1994



PUMP SIZE	MTR. FR.	H.P.	P R V	HD	VS	H	A	F	M	W	SUCTION & DISCHARGE MANIFOLDS		
2-1/2 x 3 x 9 1750 R.P.M.	182	3	27AC	11-3/4	49-9/16	54-1/16	13-1/16	9-3/16	3-7/8	36	4		
	182	3	CP	11-3/4	52-1/8	56-5/8	13-1/16	9-3/16	3-7/8	36			
	182	3	DP	11-3/4	50-7/8	55-3/8	13-1/16	9-3/16	3-7/8	36			
	182	3	EP	11-3/4	57-3/16	61-11/16	13-1/16	9-3/16	3-7/8	36			
	184	5	27AC	11-3/4	49-9/16	54-1/16	13-1/16	9-3/16	3-7/8	36			
	184	5	CP	11-3/4	52-1/8	56-5/8	13-1/16	9-3/16	3-7/8	36			
	184	5	DP	11-3/4	50-7/8	55-3/8	13-1/16	9-3/16	3-7/8	36			
	184	5	EP	11-3/4	57-3/16	61-11/16	13-1/16	9-3/16	3-7/8	36			
	213	7-1/2	EP	11-3/4	57-3/16	61-11/16	13-1/16	3-13/16	9-1/4	37-3/4			
	182	3	DP	11-3/4	51-5/8	56-5/8	13-9/16	9-3/16	3-7/8	36-1/2		5	
	182	3	EP	11-3/4	57-11/16	62-11/16	13-9/16	9-3/16	3-7/8	36-1/2			
	184	5	DP	11-3/4	51-5/8	56-5/8	13-9/16	9-3/16	3-7/8	36-1/2			
	184	5	EP	11-3/4	57-11/16	62-11/16	13-9/16	9-3/16	3-7/8	36-1/2			
	2 x 3 x 11 1750 R.P.M.	213	7-1/2	EP	11-3/4	57-11/16	62-11/16	13-9/16	3-13/16	9-3/4		38-1/4	6
184		5	EP	11-3/4	58-3/16	63-11/16	14-1/16	9-3/16	3-7/8	37			
213		7-1/2	EP	11-3/4	58-3/16	63-11/16	14-1/16	3-13/16	10-1/4	38-3/4			
213		7-1/2	27AC	12-1/4	54-13/16	59-5/16	13-7/16	3-7/8	9-9/16	38-1/16	4		
213		7-1/2	CP	12-1/4	50-3/8	54-7/8	13-7/16	3-7/8	9-9/16	38-1/16			
213		7-1/2	DP	12-1/4	55-1/8	59-5/8	13-7/16	3-7/8	9-9/16	38-1/16			
215		10	DP	12-1/4	55-1/8	59-5/8	13-7/16	3-1/8	10-5/16	40-1/16			
1-1/2 x 2 x 12 1750 R.P.M.		213	7-1/2	EP	12-1/4	58-3/16	62-11/16	13-7/16	3-7/8	9-9/16	38-1/16	5	
		215	10	EP	12-1/4	58-3/16	62-11/16	13-7/16	3-1/8	10-5/16	40-1/16		
		213	7-1/2	EP	12-1/4	58-11/16	63-11/16	13-15/16	3-7/8	10-1/16	38-1/16		
	215	10	EP	12-1/4	58-11/16	63-11/16	13-15/16	3-1/8	10-13/16	40-1/16			
	213	7-1/2	EP	12-1/4	59-3/16	64-11/16	14-7/16	3-7/8	10-9/16	38-1/16	6		
	215	10	EP	12-1/4	59-3/16	64-11/16	14-7/16	3-1/8	11-5/16	40-1/16			
	213	7-1/2	27AA	13	46-5/8	51-1/8	11-5/16	3-15/16	7-3/8	35-7/8			4
	213	7-1/2	AP	13	49-3/16	53-11/16	11-5/16	3-15/16	7-3/8	35-7/8			
213	7-1/2	27AB	13	53-9/16	58-1/8	11-5/16	3-15/16	7-3/8	35-7/8				
213	7-1/2	BP	13	46-3/4	51-1/4	11-5/16	3-15/16	7-3/8	35-7/8				
213	7-1/2	27AC	13	54-5/16	58-13/16	11-5/16	3-15/16	7-3/8	35-7/8				
213	7-1/2	CP	13	56-7/16	60-15/16	11-5/16	3-15/16	7-3/8	35-7/8				
213	7-1/2	DP	13	58-3/4	63-1/4	11-5/16	3-15/16	7-3/8	35-7/8				
215	10	27AC	13	54-5/16	58-13/16	11-5/16	3-3/16	8-1/8	37-7/8				
215	10	CP	13	56-7/8	60-15/16	11-5/16	3-3/16	8-1/8	37-7/8				
215	10	DP	13	58-3/4	63-1/4	11-5/16	3-3/16	8-1/8	37-7/8				

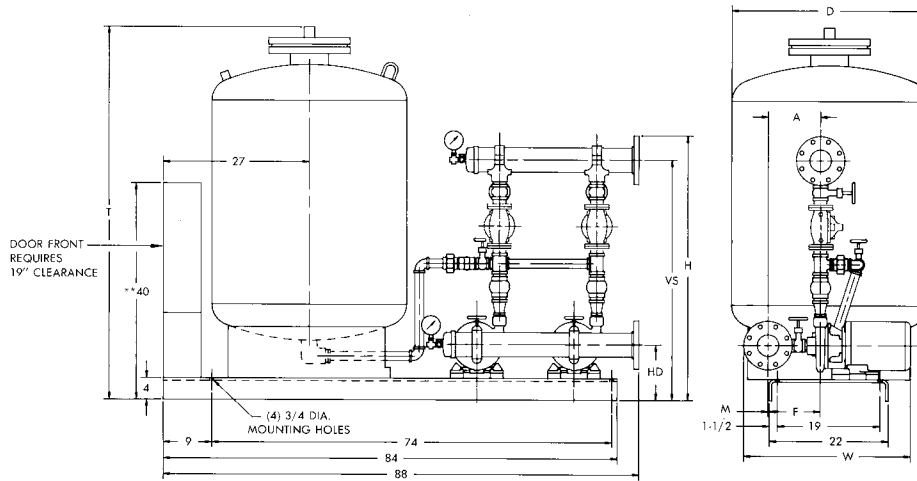
NOTES:

- ALL DIMENSIONS IN INCHES.
- DIMENSIONS MAY VARY ±1/2.
- NOT FOR CONSTRUCTION PURPOSES UNLESS CERTIFIED.
- DISCHARGE AND SUCTION FLANGES ANSI STANDARD FLAT FACE 125#.
- 1 GROUT HOLE IS PROVIDED IN TOP OF BASE.

PRESSURE REDUCING VALVES									
DIRECT ACTING					PILOT OPERATED				
SIZE	1-1/2	2	2-1/2	2	2-1/2	3	1-1/4	1-1/2	4
CODE	27AA	27AB	27AC	CP	DP	EP	AP	BP	FP

TANK SIZE (GALLONS)	79	106	132	158	170	211
T	59	53	61	69	80	67
D	24	30	30	30	30	36

PRESSURE CONTROL SYSTEMS



PUMP SIZE	MTR. FR.	H.P.	P R V	HD	VS	H	A	F	M	W	SUCTION & DISCHARGE MANIFOLDS
2-1/2 x 3 x 12 1750 R.P.M.	254	15	DP	13-1/4	53-3/8	57-7/8	13-1/16	9/16	12-1/2	41-7/8	4
	213	7-1/2	EP	13-1/4	59-11/16	64-3/16	13-1/16	3-11/16	9-3/8	37-7/8	
	215	10	EP	13-1/4	59-11/16	64-3/16	13-1/16	2-15/16	10-1/8	39-7/8	
	254	15	EP	13-1/4	59-11/16	64-3/16	13-1/16	9/16	12-1/2	41-7/8	
	213	7-1/2	EP	13-1/4	60-3/16	65-3/16	13-9/16	3-11/16	9-7/8	38-7/8	5
	215	10	EP	13-1/4	60-3/16	65-3/16	13-9/16	2-15/16	10-5/8	40-7/8	
	254	15	EP	13-1/4	60-3/16	65-3/16	13-9/16	9/16	13	42-7/8	
	256	20	EP	13-1/4	60-3/16	65-3/16	13-9/16	13/16†	14-3/8	46-7/8	
	215	10	EP	13-1/4	60-11/16	66-3/16	14-1/16	2-15/16	11-1/8	41-7/8	6
	254	15	EP	13-1/4	60-11/16	66-3/16	14-1/16	9/16	13-1/2	43-7/8	
	256	20	EP	13-1/4	60-11/16	66-3/16	14-1/16	13/16†	14-7/8	47-7/8	
	254	15	FP	13-1/4	70-7/16	75-15/16	14-1/16	9/16	13-1/2	43-7/8	
256	20	FP	13-1/4	70-7/16	75-15/16	14-1/16	13/16†	14-7/8	47-7/8		

NOTES:

1. ALL DIMENSIONS IN INCHES.
2. DIMENSIONS MAY VARY ±1/2.
3. NOT FOR CONSTRUCTION PURPOSES UNLESS CERTIFIED.
4. DISCHARGE AND SUCTION FLANGES ANSI STANDARD FLAT FACE 125#.
5. 1 GROUT HOLE IS PROVIDED IN TOP OF BASE.

†DISCHARGE CENTERLINE, "F" DIMENSION IS LEFT OF BASE FOR THESE PUMP SELECTIONS ONLY.

**PANEL HEIGHT 48" ON 208 VOLT 15 H.P. AND 20 H.P. ALSO 230 VOLT 20 H.P.

PRESSURE REDUCING VALVES									
DIRECT ACTING				PILOT OPERATED					
SIZE	1-1/2	2	2-1/2	2	2-1/2	3	1-1/4	1-1/2	4
CODE	27AA	27AB	27AC	CP	DP	EP	AP	BP	FP

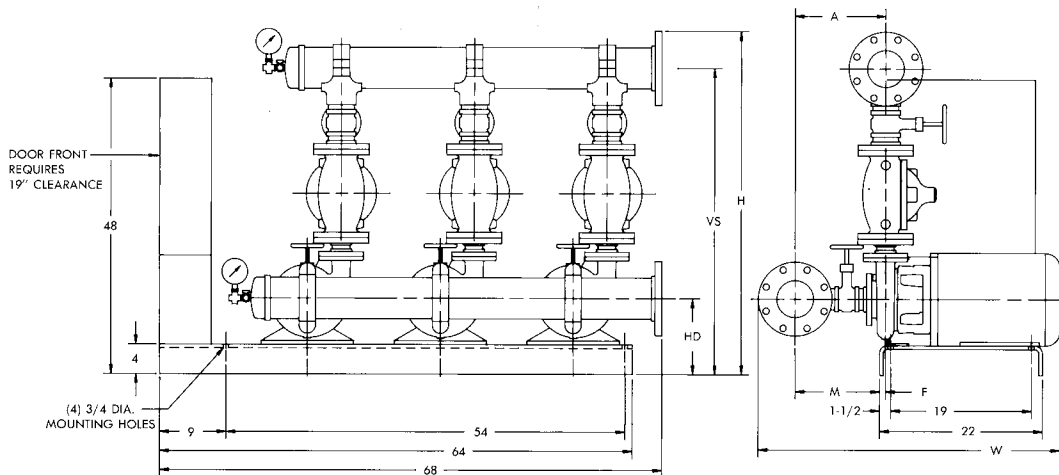
TANK SIZE (GALLONS)	79	106	132	158	170	211
T	59	53	61	69	80	67
D	24	30	30	30	30	36

AURORA MODEL 763 PUMPS

AURORA - PC

TRIPLEX - 3500 R.P.M.

PRESSURE CONTROL SYSTEMS



PUMP SIZE	MTR. FR.	H.P.	P R V	HD	VS	H	A	F	M	W	SUCTION & DISCHARGE MANIFOLDS
1-1/4 x 1-1/2 x 7 3500 R.P.M.	145	2	27AA	10-1/4	34-5/16	38-13/16	10-11/16	9-7/16	1-1/4	33-3/8	4
	145	2	AP	10-1/4	31-3/8	35-7/8	10-11/16	9-7/16	1-1/4	33-3/8	
	182	3	27AA	10-1/4	34-5/16	38-13/16	10-11/16	9-7/16	1-1/4	33-3/8	
	182	3	AP	10-1/4	31-3/8	35-7/8	10-11/16	9-7/16	1-1/4	33-3/8	
	182	3	27AB	10-1/4	37	41-1/2	10-11/16	9-7/16	1-1/4	33-3/8	
	182	3	BP	10-1/4	34-9/16	39-1/16	10-11/16	9-7/16	1-1/4	33-3/8	
	182	3	27AC	10-1/4	38-7/16	42-15/16	10-11/16	9-7/16	1-1/4	33-3/8	
	182	3	CP	10-1/4	39-7/8	44-3/8	10-11/16	9-7/16	1-1/4	33-3/8	
	184	5	27AA	10-1/4	34-5/16	38-13/16	10-11/16	9-7/16	1-1/4	33-3/8	
	184	5	AP	10-1/4	31-3/8	35-7/8	10-11/16	9-7/16	1-1/4	33-3/8	
	184	5	27AB	10-1/4	37	41-1/2	10-11/16	9-7/16	1-1/4	33-3/8	
	184	5	BP	10-1/4	34-9/16	39-1/16	10-11/16	9-7/16	1-1/4	33-3/8	
	184	5	27AC	10-1/4	38-7/16	42-15/16	10-11/16	9-7/16	1-1/4	33-3/8	
	184	5	CP	10-1/4	39-7/8	44-3/8	10-11/16	9-7/16	1-1/4	33-3/8	
	213	7-1/2	27AB	10-1/4	37	41-1/2	10-11/16	4-1/8	6-9/16	35-1/16	
	213	7-1/2	BP	10-1/4	34-9/16	39-1/16	10-11/16	4-1/8	6-9/16	35-1/16	
	213	7-1/2	27AC	10-1/4	38-7/16	42-15/16	10-11/16	4-1/8	6-9/16	35-1/16	
	213	7-1/2	CP	10-1/4	39-7/8	44-3/8	10-11/16	4-1/8	6-9/16	35-1/16	
1-1/2 x 2 x 7 3500 R.P.M.	184	5	CP	10-1/4	39-3/4	44-1/4	11-1/16	9-3/8	1-11/16	33-13/16	4
	184	5	DP	10-1/4	42-7/8	47-3/8	11-1/16	9-3/8	1-11/16	33-13/16	
	213	7-1/2	27AC	10-1/4	38-11/16	43-3/16	11-1/16	4-1/16	7	35-1/2	
	213	7-1/2	CP	10-1/4	39-3/4	44-1/4	11-1/16	4-1/16	7	35-1/2	
	213	7-1/2	DP	10-1/4	42-7/8	47-3/8	11-1/16	4-1/16	7	35-1/2	
	215	10	27AC	10-1/4	38-11/16	43-3/16	11-1/16	3-5/16	7-3/4	37-1/2	
	215	10	CP	10-1/4	39-3/4	44-1/4	11-1/16	3-5/16	7-3/4	37-1/2	
	215	10	DP	10-1/4	42-7/8	47-3/8	11-1/16	3-5/16	7-3/4	37-1/2	
2 x 2-1/2 x 7A 3500 R.P.M.	184	5	EP	10-1/4	41-13/16	46-5/16	12	9-1/4	2-3/4	34-7/8	4
	213	7-1/2	EP	10-1/4	41-13/16	46-5/16	12	3-15/16	8-1/16	36-9/16	
	215	10	EP	10-1/4	41-13/16	46-5/16	12	3-3/16	8-13/16	38-9/16	
	254	15	DP	10-1/4	40	44-1/2	12	13/16	11-3/16	40-9/16	
	254	15	EP	10-1/4	41-13/16	46-5/16	12	13/16	11-3/16	40-9/16	4
	256	20	EP	10-1/4	41-13/16	46-5/16	12	9/16†	12-9/16	44-9/16	
	213	7-1/2	EP	10-1/4	42-13/16	47-13/16	12-3/4	3-15/16	8-13/16	37-13/16	5
	215	10	EP	10-1/4	42-13/16	47-13/16	12-3/4	3-3/16	9-9/16	39-13/16	
	254	15	EP	10-1/4	42-13/16	47-13/16	12-3/4	13/16	11-15/16	41-13/16	
	256	20	EP	10-1/4	42-13/16	47-13/16	12-3/4	9/16†	13-5/16	45-13/16	
	213	7-1/2	EP	10-1/4	43-5/16	48-13/16	13-1/8	3-15/16	9-3/16	38-11/16	6
	215	10	EP	10-1/4	43-5/16	48-13/16	13-1/8	3-3/16	9-15/16	40-11/16	
	254	15	EP	10-1/4	43-5/16	48-13/16	13-1/8	13/16	12-5/16	42-11/16	
	256	20	EP	10-1/4	43-5/16	48-13/16	13-1/8	9/16†	13-11/16	46-11/16	

- NOTES:
- ALL DIMENSIONS IN INCHES.
 - DIMENSIONS MAY VARY ± 1/2.
 - NOT FOR CONSTRUCTION PURPOSES UNLESS CERTIFIED.
 - DISCHARGE AND SUCTION FLANGES AMERICAN STANDARD FLAT FACE 125#.
 - 1 GROUT HOLE IS PROVIDED IN TOP OF BASE.

PRESSURE REDUCING VALVES									
DIRECT ACTING					PILOT OPERATED				
SIZE	1-1/2	2	2-1/2	2	2-1/2	3	1-1/4	1-1/2	4
CODE	27AA	27AB	27AC	CP	DP	EP	AP	BP	FP

†DISCHARGE CENTERLINE, "F" DIMENSION IS LEFT OF BASE FOR THESE PUMP SELECTIONS ONLY.

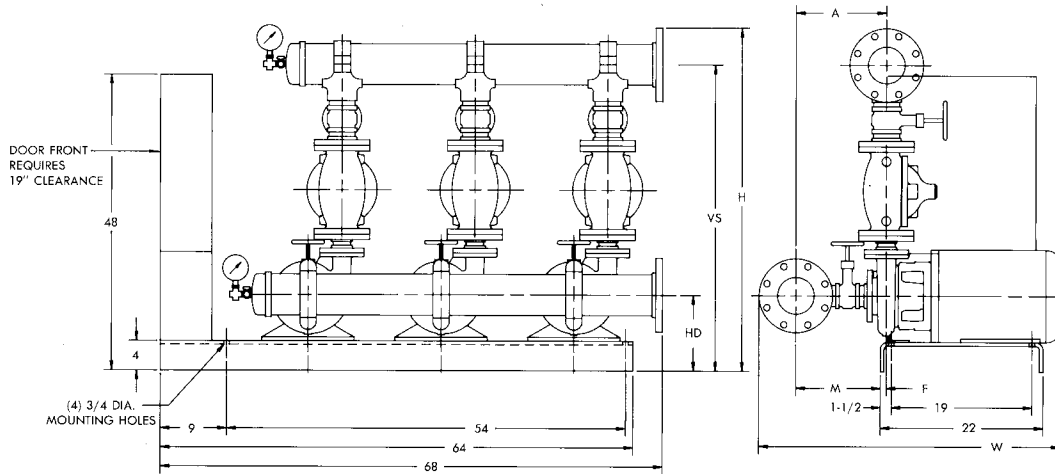
AURORA MODEL 763 PUMPS

AURORA - PC

TRIPLEX - 3500 R.P.M.

PRESSURE CONTROL SYSTEMS

SUPERSEDES PAGE 220
 DATED AUGUST 1987



PUMP SIZE	MTR. FR.	H.P.	P R V	HD	VS	H	A	F	M	W	SUCTION & DISCHARGE MANIFOLDS		
2-1/2 x 3 x 7B 3500 R.P.M.	254	15	EP	11-1/4	43-13/16	48-5/16	13-1/16	11/16	12-3/8	41-3/4	4		
	254	15	EP	11-1/4	44-5/16	49-5/16	13-9/16	11/16	12-7/8	42-3/4	5		
	256	20	EP	11-1/4	44-5/16	49-5/16	13-9/16	11/16†	14-1/4	46-3/4	6		
	215	10	FP	11-1/4	52-5/16	57-13/16	14-1/16	3-1/16	11	41-3/4			
	254	15	FP	11-1/4	52-5/16	57-13/16	14-1/16	11/16	13-3/8	43-3/4			
	256	20	FP	11-1/4	52-5/16	57-13/16	14-1/16	11/16†	14-3/4	47-3/4			
	254	15	EP	11-1/4	44-13/16	50-5/16	14-1/16	11/16	13-3/8	43-3/4			
	256	20	EP	11-1/4	44-13/16	50-5/16	14-1/16	11/16†	14-3/4	47-3/4			
1-1/2 x 2 x 9C 3500 R.P.M.	213	7-1/2	27AB	11-1/4	39-5/8	44-1/8	11-3/16	4-1/16	7-1/8	35-5/8	4		
	213	7-1/2	BP	11-1/4	34	38-1/2	11-3/16	4-1/16	7-1/8	35-5/8			
	215	10	27AB	11-1/4	39-5/8	44-1/8	11-3/16	3-5/16	7-7/8	37-5/8			
	215	10	27AC	11-1/4	41-1/16	45-9/16	11-3/16	3-5/16	7-7/8	37-5/8			
	215	10	CP	11-1/4	42-1/8	46-5/8	11-3/16	3-5/16	7-7/8	37-5/8			
	215	10	BP	11-1/4	34	38-1/2	11-3/16	3-5/16	7-7/8	37-5/8			
	254	15	27AB	11-1/4	39-5/8	44-1/8	11-3/16	15/16	10-1/4	39-5/8			
	254	15	27AC	11-1/4	41-1/16	45-9/16	11-3/16	15/16	10-1/4	39-5/8			
	254	15	CP	11-1/4	42-1/8	46-5/8	11-3/16	15/16	10-1/4	39-5/8			
	254	15	DP	11-1/4	45-1/4	49-3/4	11-3/16	15/16	10-1/4	39-5/8			
	254	15	BP	11-1/4	34	38-1/2	11-3/16	15/16	10-1/4	39-5/8			
	256	20	27AC	11-1/4	41-1/16	45-9/16	11-3/16	7/16†	11-5/8	43-5/8			
	256	20	CP	11-1/4	42-1/8	46-5/8	11-3/16	7/16†	11-5/8	43-5/8			
	256	20	DP	11-1/4	45-1/4	49-3/4	11-3/16	7/16†	11-5/8	43-5/8			
	2 x 2-1/2 x 9 3500 R.P.M.	254	15	EP	11-3/4	45-3/16	49-11/16	12	13/16	11-3/16		40-9/16	4
		256	20	EP	11-3/4	45-3/16	49-11/16	12	9/16†	12-9/16		44-9/16	5
254		15	EP	11-3/4	45-11/16	50-11/16	12-3/4	13/16	11-15/16	41-13/16			
256		20	EP	11-3/4	45-11/16	50-11/16	12-3/4	9/16†	13-5/16	45-13/16	6		
254		15	EP	11-3/4	46-3/16	51-11/16	13-1/8	13/16	12-5/16	42-11/16			
256		20	EP	11-3/4	46-3/16	51-11/16	13-1/8	9/16†	13-11/16	46-11/16			

NOTES:

- ALL DIMENSIONS IN INCHES.
- DIMENSIONS MAY VARY ± 1/2.
- NOT FOR CONSTRUCTION PURPOSES UNLESS CERTIFIED.
- DISCHARGE AND SUCTION FLANGES AMERICAN STANDARD FLAT FACE 125#.
- 1 GROUT HOLE IS PROVIDED IN TOP OF BASE.

PRESSURE REDUCING VALVES										
DIRECT ACTING					PILOT OPERATED					
SIZE	1-1/2	2	2-1/2	3	2	2-1/2	3	1-1/4	1-1/2	4
CODE	27AA	27AB	27AC	CP	DP	EP	AP	BP	FP	

†DISCHARGE CENTERLINE, "F" DIMENSION IS LEFT OF BASE FOR THESE PUMP SELECTIONS ONLY.

AURORA MODEL 763 PUMPS

AURORA - PC

TRIPLEX - 1750 R.P.M.

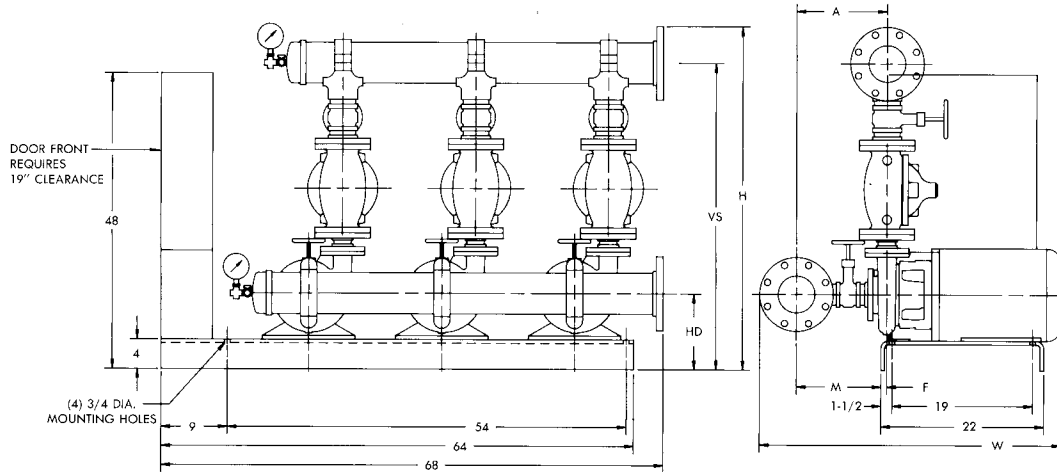
PRESSURE CONTROL SYSTEMS

SECTION 750/760 PAGE 221

DATED JULY 1999

SUPERSEDES PAGE 221

DATED AUGUST 1987



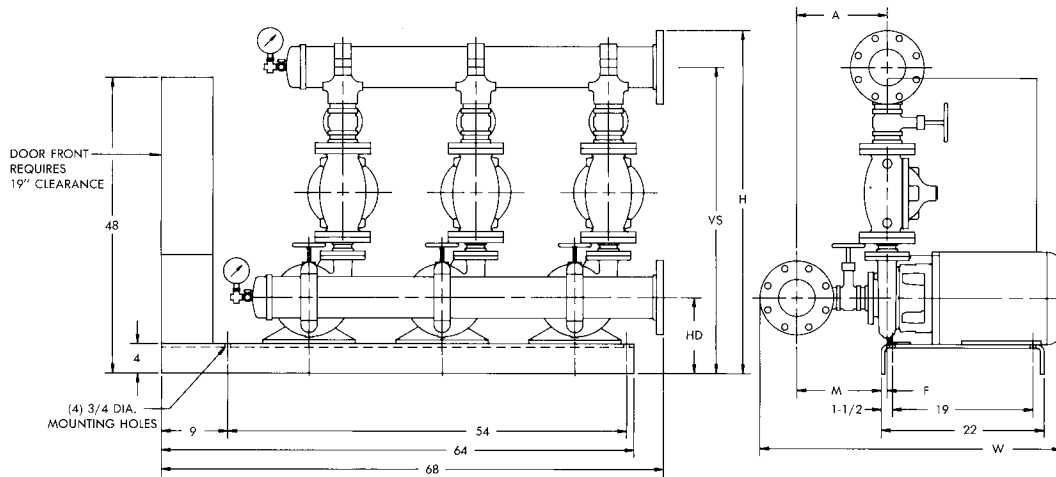
PUMP SIZE	MTR. FR.	H.P.	P R V	HD	VS	H	A	F	M	W	SUCTION & DISCHARGE MANIFOLDS
1-1/2 x 2 x 9C 1750 R.P.M.	143	1	27AA	11-1/4	33-7/8	38-3/8	11-3/16	10-3/16	1	32-7/8	4
	143	1	27AB	11-1/4	39-5/8	44-1/8	11-3/16	10-3/16	1	32-7/8	
	143	1	AP	11-1/4	36-15/16	41-1/16	11-3/16	10-3/16	1	32-7/8	
	143	1	BP	11-1/4	34	38-1/2	11-3/16	10-3/16	1	32-7/8	
	145	1-1/2	27AA	11-1/4	33-7/8	38-3/8	11-3/16	10-3/16	1	33-7/8	
	145	1-1/2	27AB	11-1/4	39-5/8	44-1/8	11-3/16	10-3/16	1	33-7/8	
	145	1-1/2	AP	11-1/4	36-15/16	41-1/16	11-3/16	10-3/16	1	33-7/8	
	145	1-1/2	BP	11-1/4	34	38-1/2	11-3/16	10-3/16	1	33-7/8	
	145	2	27AA	11-1/4	33-7/8	38-3/8	11-3/16	10-3/16	1	33-7/8	
	145	2	27AB	11-1/4	39-5/8	44-1/8	11-3/16	10-3/16	1	33-7/8	
	145	2	27AC	11-1/4	41-1/16	45-9/16	11-3/16	10-3/16	1	33-7/8	
	145	2	CP	11-1/4	42-1/8	46-5/8	11-3/16	10-3/16	1	33-7/8	
	145	2	AP	11-1/4	36-15/16	41-7/16	11-3/16	10-3/16	1	33-7/8	
	145	2	BP	11-1/4	34	38-1/2	11-3/16	10-3/16	1	33-7/8	
	182	3	27AA	11-1/4	33-7/8	38-3/8	11-3/16	10-3/16	1	33-7/8	
	182	3	27AB	11-1/4	39-5/8	44-1/8	11-3/16	10-3/16	1	33-7/8	
	182	3	27AC	11-1/4	41-1/16	45-9/16	11-3/16	10-3/16	1	33-7/8	
	182	3	CP	11-1/4	42-1/8	46-5/8	11-3/16	10-3/16	1	33-7/8	
	182	3	AP	11-1/4	36-15/16	41-7/16	11-3/16	10-3/16	1	33-7/8	
	182	3	BP	11-1/4	34	38-1/2	11-3/16	10-3/16	1	33-7/8	
2 x 2-1/2 x 9 1750 R.P.M.	145	2	27AC	11-3/4	42-9/16	47-1/16	12	9-5/16	2-11/16	34-13/16	4
	145	2	CP	11-3/4	37-11/16	42-3/16	12	9-5/16	2-11/16	34-13/16	
	145	2	DP	11-3/4	42-7/8	47-3/8	12	9-5/16	2-11/16	34-13/16	
	182	3	27AB	11-3/4	37-11/16	42-3/16	12	9-5/16	2-11/16	34-13/16	
	182	3	27AC	11-3/4	42-9/16	47-1/16	12	9-5/16	2-11/16	34-13/16	
	182	3	CP	11-3/4	37-11/16	42-3/16	12	9-5/16	2-11/16	34-13/16	
	182	3	DP	11-3/4	42-7/8	47-3/8	12	9-5/16	2-11/16	34-13/16	
	182	3	BP	11-3/4	38-5/16	42-13/16	12	9-5/16	2-11/16	34-13/16	
	184	5	27AC	11-3/4	42-9/16	47-1/16	12	9-5/16	2-11/16	34-13/16	
	184	5	CP	11-3/4	37-11/16	42-3/16	12	9-5/16	2-11/16	34-13/16	
184	5	DP	11-3/4	42-7/8	47-3/8	12	9-5/16	2-11/16	34-13/16		

NOTES:

- ALL DIMENSIONS IN INCHES.
- DIMENSIONS MAY VARY ± 1/2.
- NOT FOR CONSTRUCTION PURPOSES UNLESS CERTIFIED.
- DISCHARGE AND SUCTION FLANGES AMERICAN STANDARD FLAT FACE 125#.
- 1 GROUT HOLE IS PROVIDED IN TOP OF BASE.

PRESSURE REDUCING VALVES									
DIRECT ACTING					PILOT OPERATED				
SIZE	1-1/2	2	2-1/2	3	2-1/2	3	1-1/4	1-1/2	4
CODE	27AA	27AB	27AC	CP	DP	EP	AP	BP	FP

PRESSURE CONTROL SYSTEMS



PUMP SIZE	MTR. FR.	H.P.	P R V	HD	VS	H	A	F	M	W	SUCTION & DISCHARGE MANIFOLDS		
2-1/2 x 3 x 9 1750 R.P.M.	182	3	27AC	11-3/4	38-13/16	43-5/16	13-1/16	9-3/16	3-7/8	36	4		
	182	3	CP	11-3/4	40-15/16	45-7/16	13-1/16	9-3/16	3-7/8	36			
	182	3	DP	11-3/4	40-1/8	44-5/8	13-1/16	9-3/16	3-7/8	36			
	182	3	EP	11-3/4	45-11/16	50-3/16	13-1/16	9-3/16	3-7/8	36			
	184	5	27AC	11-3/4	38-13/16	43-5/16	13-1/16	9-3/16	3-7/8	36			
	184	5	CP	11-3/4	40-15/16	45-7/16	13-1/16	9-3/16	3-7/8	36			
	184	5	DP	11-3/4	40-1/8	44-5/8	13-1/16	9-3/16	3-7/8	36			
	184	5	EP	11-3/4	45-11/16	50-3/16	13-1/16	9-3/16	3-7/8	36			
	213	7-1/2	EP	11-3/4	45-11/16	50-3/16	13-1/16	3-13/16	9-1/4	37-3/4			
	182	3	DP	11-3/4	40-7/8	45-7/8	13-9/16	9-3/16	3-7/8	36-1/2		5	
	182	3	EP	11-3/4	46-3/16	51-3/16	13-9/16	9-3/16	3-7/8	36-1/2			
	184	5	DP	11-3/4	40-7/8	45-7/8	13-9/16	9-3/16	3-7/8	36-1/2			
	184	5	EP	11-3/4	46-3/16	51-3/16	13-9/16	9-3/16	3-7/8	36-1/2		6	
	213	7-1/2	EP	11-3/4	46-3/16	51-3/16	13-9/16	3-13/16	9-3/4	38-1/4			
184	5	EP	11-3/4	46-11/16	52-3/16	14-1/16	9-3/16	3-7/8	37				
213	7-1/2	EP	11-3/4	46-11/16	52-3/16	14-1/16	3-13/16	10-1/4	38-3/4	4			
2 x 3 x 11 1750 R.P.M.	213	7-1/2	27AC	12-1/4	44-1/16	48-9/16	13-7/16	3-7/8	9-9/16		38-1/16		
	213	7-1/2	CP	12-1/4	39-3/16	43-11/16	13-7/16	3-7/8	9-9/16		38-1/16		
	213	7-1/2	DP	12-1/4	44-3/8	48-7/8	13-7/16	3-7/8	9-9/16		38-1/16		
	215	10	DP	12-1/4	44-3/8	48-7/8	13-7/16	3-1/8	10-5/16		40-1/16		
	213	7-1/2	EP	12-1/4	46-11/16	51-3/16	13-7/16	3-7/8	9-9/16		38-1/16		
	215	10	EP	12-1/4	46-11/16	51-3/16	13-7/16	3-1/8	10-5/16		40-1/16		
	213	7-1/2	EP	12-1/4	47-3/16	52-3/16	13-15/16	3-7/8	10-1/16		38-1/16		
	215	10	EP	12-1/4	47-3/16	52-3/16	13-15/16	3-1/8	10-13/16		40-1/16		
	213	7-1/2	EP	12-1/4	47-11/16	53-3/16	14-7/16	3-7/8	10-9/16		38-1/16		
	215	10	EP	12-1/4	47-11/16	53-3/16	14-7/16	3-1/8	11-5/16		40-1/16		
	1-1/2 x 2 x 12 1750 R.P.M.	213	7-1/2	27AA	13	36-5/8	41-5/8	11-5/16	3-15/16		7-3/8	35-7/8	4
		213	7-1/2	AP	13	39-11/16	44-3/16	11-5/16	3-15/16		7-3/8	35-7/8	
		213	7-1/2	27AB	13	42-3/8	46-7/8	11-5/16	3-15/16		7-3/8	35-7/8	
		213	7-1/2	BP	13	36-3/4	41-1/4	11-5/16	3-15/16	7-3/8	35-7/8		
213		7-1/2	27AC	13	43-9/16	48-1/16	11-5/16	3-15/16	7-3/8	35-7/8			
213		7-1/2	CP	13	45-1/4	49-3/4	11-5/16	3-15/16	7-3/8	35-7/8			
213		7-1/2	DP	13	48	52-1/2	11-5/16	3-15/16	7-3/8	35-7/8			
215		10	27AC	13	43-9/16	48-1/16	11-5/16	3-13/16	8-1/8	37-7/8			
215		10	CP	13	45-1/4	49-3/4	11-5/16	3-13/16	8-1/8	37-7/8			
215		10	DP	13	48	52-1/2	11-5/16	3-13/16	8-1/8	37-7/8			

NOTES:

1. ALL DIMENSIONS IN INCHES.
2. DIMENSIONS MAY VARY ± 1/2.
3. NOT FOR CONSTRUCTION PURPOSES UNLESS CERTIFIED.
4. DISCHARGE AND SUCTION FLANGES AMERICAN STANDARD FLAT FACE 125#.
5. 1 GROUT HOLE IS PROVIDED IN TOP OF BASE.

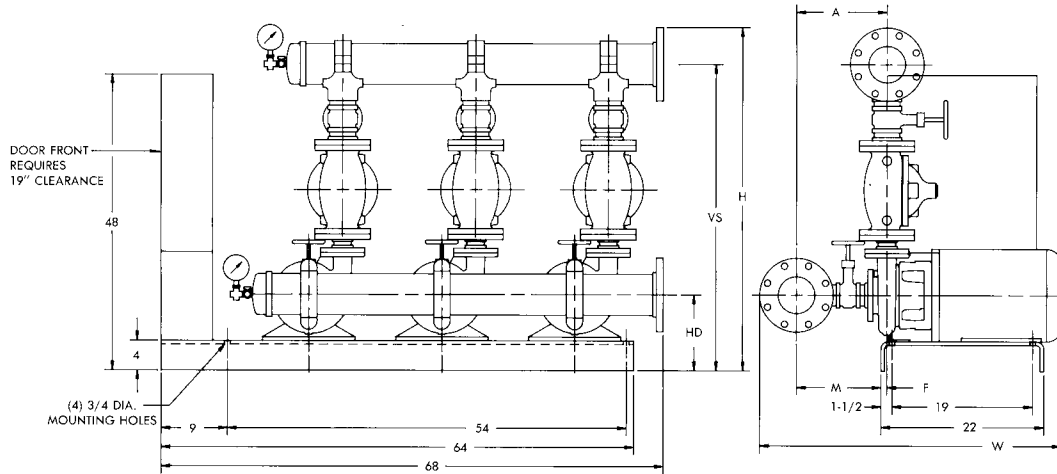
PRESSURE REDUCING VALVES									
DIRECT ACTING					PILOT OPERATED				
SIZE	1-1/2	2	2-1/2	3	2-1/2	3	1-1/4	1-1/2	4
CODE	27AA	27AB	27AC	CP	DP	EP	AP	BP	FP

AURORA MODEL 763 PUMPS

AURORA - PC

TRIPLEX - 1750 R.P.M.

PRESSURE CONTROL SYSTEMS



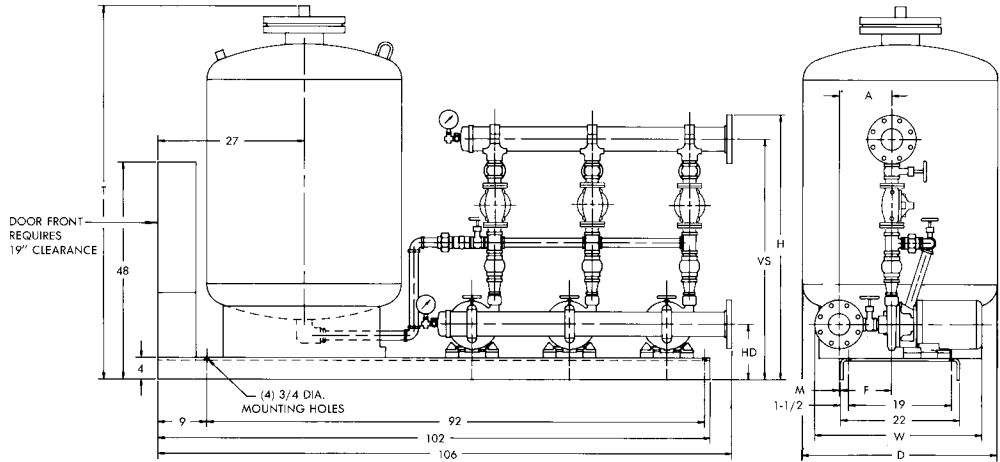
PUMP SIZE	MTR. FR.	H.P.	P R V	HD	VS	H	A	F	M	W	SUCTION & DISCHARGE MANIFOLDS
2-1/2 x 3 x 12 1750 R.P.M.	254	15	DP	13-1/4	42-5/8	47-1/8	13-1/16	9/16	12-1/2	41-7/8	4
	213	7-1/2	EP	13-1/4	48-3/16	52-11/16	13-1/16	3-11/16	9-3/8	37-7/8	
	215	10	EP	13-1/4	48-3/16	52-11/16	13-1/16	2-15/16	10-1/8	39-7/8	
	254	15	EP	13-1/4	48-3/16	52-11/16	13-1/16	9/16	12-1/2	41-7/8	
	213	7-1/2	EP	13-1/4	48-11/16	53-11/16	13-9/16	3-11/16	9-7/8	38-7/8	5
	215	10	EP	13-1/4	48-11/16	53-11/16	13-9/16	2-15/16	10-5/8	40-7/8	
	254	15	EP	13-1/4	48-11/16	53-11/16	13-9/16	9/16	13	42-7/8	
	256	20	EP	13-1/4	48-11/16	53-11/16	13-9/16	13/16†	14-3/8	46-7/8	
	215	10	EP	13-1/4	49-3/16	54-11/16	14-1/16	2-15/16	11-1/8	41-7/8	6
	254	15	EP	13-1/4	49-3/16	54-11/16	14-1/16	9/16	13-1/2	43-7/8	
	256	20	EP	13-1/4	49-3/16	54-11/16	14-1/16	13/16†	14-7/8	47-7/8	
	254	15	FP	13-1/4	56-11/16	62-3/16	14-1/16	9/16	13-1/2	43-7/8	
	256	20	FP	13-1/4	56-11/16	62-3/16	14-1/16	13/16†	14-7/8	47-7/8	

NOTES:

1. ALL DIMENSIONS IN INCHES.
2. DIMENSIONS MAY VARY ±1/2.
3. NOT FOR CONSTRUCTION PURPOSES UNLESS CERTIFIED.
4. DISCHARGE AND SUCTION FLANGES ANSI STANDARD FLAT FACE 125#.
5. 1 GROUT HOLE IS PROVIDED IN TOP OF BASE.

PRESSURE REDUCING VALVES										
DIRECT ACTING					PILOT OPERATED					
SIZE	1-1/2	2	2-1/2	3	2	2-1/2	3	1-1/4	1-1/2	4
CODE	27AA	27AB	27AC		CP	DP	EP	AP	BP	FP

†DISCHARGE CENTERLINE, "F" DIMENSION IS LEFT OF BASE FOR THESE PUMP SELECTIONS ONLY.



†DISCHARGE CENTERLINE, "F" DIMENSION IS LEFT OF BASE FOR THESE PUMP SELECTIONS ONLY.

PUMP SIZE	MTR. FR.	H.P.	P R V	HD	VS	H	A	F	M	W	SUCTION & DISCHARGE MANIFOLDS		
1-1/4 x 1-1/2 x 7 3500 R.P.M.	145	2	27AA	10-1/4	42-3/4	47-1/4	10-11/16	9-7/16	1-1/4	33-3/8	4		
	145	2	AP	10-1/4	39-5/16	43-13/16	10-11/16	9-7/16	1-1/4	33-3/8			
	182	3	27AB	10-1/4	42-3/4	47-1/4	10-11/16	9-7/16	1-1/4	33-3/8			
	182	3	AP	10-1/4	39-5/16	43-13/16	10-11/16	9-7/16	1-1/4	33-3/8			
	182	3	27AB	10-1/4	46-3/8	50-7/8	10-11/16	9-7/16	1-1/4	33-3/8			
	182	3	BP	10-1/4	43	47-1/2	10-11/16	9-7/16	1-1/4	33-3/8			
	182	3	27AC	10-1/4	49-3/16	53-11/16	10-11/16	9-7/16	1-1/4	33-3/8			
	182	3	CP	10-1/4	49-1/4	53-3/4	10-11/16	9-7/16	1-1/4	33-3/8			
	184	5	27AA	10-1/4	42-3/4	47-1/4	10-11/16	9-7/16	1-1/4	33-3/8			
	184	5	AP	10-1/4	39-5/16	43-13/16	10-11/16	9-7/16	1-1/4	33-3/8			
	184	5	27AB	10-1/4	46-3/8	50-7/8	10-11/16	9-7/16	1-1/4	33-3/8			
	184	5	BP	10-1/4	43	47-1/2	10-11/16	9-7/16	1-1/4	33-3/8			
	184	5	27AC	10-1/4	49-3/16	53-11/16	10-11/16	9-7/16	1-1/4	33-3/8			
	184	5	CP	10-1/4	49-1/4	53-3/4	10-11/16	9-7/16	1-1/4	33-3/8			
	213	7-1/2	27AB	10-1/4	46-3/8	50-7/8	10-11/16	4-1/8	6-9/16	35-1/16			
	213	7-1/2	BP	10-1/4	43	47-1/2	10-11/16	4-1/8	6-9/16	35-1/16			
	213	7-1/2	27AC	10-1/4	49-3/16	53-11/16	10-11/16	4-1/8	6-9/16	35-1/16			
	1-1/2 x 2 x 7 3500 R.P.M.	184	5	CP	10-1/4	49-1/4	53-3/4	10-11/16	4-1/8	6-9/16		35-1/16	4
184		5	DP	10-1/4	49-1/8	53-5/8	11-1/16	9-3/8	1-11/16	33-13/16			
213		7-1/2	27AC	10-1/4	49-7/16	53-15/16	11-1/16	4-1/16	7	35-1/2			
213		7-1/2	CP	10-1/4	49-1/8	53-5/8	11-1/16	4-1/16	7	35-1/2			
213		7-1/2	DP	10-1/4	53-5/8	58-1/8	11-1/16	4-1/16	7	35-1/2			
215		10	27AC	10-1/4	49-7/16	53-15/16	11-1/16	3-5/16	7-3/4	37-1/2			
215		10	CP	10-1/4	49-1/8	53-5/8	11-1/16	3-5/16	7-3/4	37-1/2			
215		10	DP	10-1/4	53-5/8	58-1/8	11-1/16	3-5/16	7-3/4	37-1/2			
2 x 2-1/2 x 7A 3500 R.P.M.		184	5	EP	10-1/4	53-5/16	57-13/16	12	9-1/4	2-3/4	34-7/8	4	
		213	7-1/2	EP	10-1/4	53-5/16	57-13/16	12	3-15/16	8-1/16	36-9/16		
	215	10	EP	10-1/4	53-5/16	57-13/16	12	3-3/16	8-13/16	38-9/16			
	254	15	DP	10-1/4	50-3/4	55-1/4	12	13/16	11-3/16	40-9/16			
	254	15	EP	10-1/4	53-5/16	57-13/16	12	13/16	11-3/16	40-9/16	5		
	256	20	EP	10-1/4	53-5/16	57-13/16	12	9/16†	12-9/16	44-9/16			
	213	7-1/2	EP	10-1/4	54-5/16	59-5/16	12-3/4	3-15/16	8-13/16	37-13/16			
	215	10	EP	10-1/4	54-5/16	59-5/16	12-3/4	3-3/16	9-9/16	39-13/16			
	254	15	EP	10-1/4	54-5/16	59-5/16	12-3/4	13/16	11-15/16	41-13/16	6		
	256	20	EP	10-1/4	54-5/16	59-5/16	12-3/4	9/16†	13-5/16	45-13/16			
	213	7-1/2	EP	10-1/4	54-13/16	60-5/16	13-1/8	3-15/16	9-3/16	38-11/16			
	215	10	EP	10-1/4	54-13/16	60-5/16	13-1/8	3-3/16	9-15/16	40-11/16			
	254	15	EP	10-1/4	54-13/16	60-5/16	13-1/8	13/16	12-5/16	42-11/16	6		
	256	20	EP	10-1/4	54-13/16	68-5/16	13-1/8	9/16†	13-11/16	46-11/16			

PRESSURE REDUCING VALVES										
DIRECT ACTING					PILOT OPERATED					
SIZE	1-1/2	2	2-1/2	2	2-1/2	3	1-1/4	1-1/2	4	
CODE	27AA	27AB	27AC	CP	DP	EP	AP	BP	FP	

TANK SIZE (GALLONS)	79	106	132	158	170	211
T	59	53	61	69	80	67
D	24	30	30	30	30	36

NOTES:

1. ALL DIMENSIONS IN INCHES.
2. DIMENSIONS MAY VARY ±1/2.
3. NOT FOR CONSTRUCTION PURPOSES UNLESS CERTIFIED.
4. DISCHARGE AND SUCTION FLANGES ANSI STANDARD FLAT FACE 125#.
5. 1 GROUT HOLE IS PROVIDED IN TOP OF BASE.

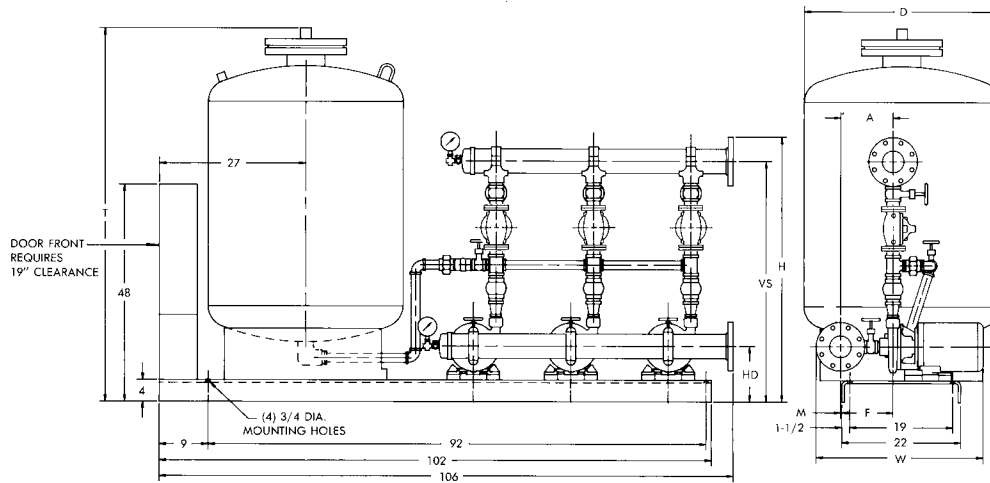
AURORA MODEL 763 PUMPS

AURORA - PC

TRIPLEX - WITH TANK

3500 R.P.M.

PRESSURE CONTROL SYSTEMS



PUMP SIZE	MTR. FR.	H.P.	P R V	HD	VS	H	A	F	M	W	SUCTION & DISCHARGE MANIFOLDS
2-1/2 x 3 x 7B 3500 R.P.M.	254	15	EP	11-1/4	55-5/16	59-13/16	13-1/16	11/16	12-3/8	41-3/4	4
	254	15	EP	11-1/4	55-13/16	60-13/16	13-9/16	11/16	12-7/8	42-3/4	5
	256	20	EP	11-1/4	55-13/16	60-13/16	13-9/16	11/16†	14-1/4	46-3/4	6
	215	10	FP	11-1/4	66-1/16	71-9/16	14-1/16	3-1/16	11	41-3/4	
	254	15	FP	11-1/4	66-1/16	71-9/16	14-1/16	11/16	13-3/8	43-3/4	
	256	20	FP	11-1/4	66-1/16	71-9/16	14-1/16	11/16†	14-3/4	47-3/4	
	254	15	EP	11-1/4	56-5/16	61-13/16	14-1/16	11/16	13-3/8	43-3/4	
256	20	EP	11-1/4	56-5/16	61-13/16	14-1/16	11/16†	14-3/4	47-3/4		
1-1/2 x 2 x 9C 3500 R.P.M.	213	7-1/2	27AB	11-1/4	50-13/16	55-5/16	11-3/16	4-1/16	7-1/8	35-5/8	4
	213	7-1/2	BP	11-1/4	44	48-1/2	11-3/16	4-1/16	7-1/8	35-5/8	
	215	10	27AB	11-1/4	50-13/16	55-5/16	11-3/16	3-5/16	7-7/8	37-5/8	
	215	10	27AC	11-1/4	51-13/16	56-5/16	11-3/16	3-5/16	7-7/8	37-5/8	
	215	10	CP	11-1/4	53-5/16	57-13/16	11-3/16	3-5/16	7-7/8	37-5/8	
	215	10	BP	11-1/4	44	48-1/2	11-3/16	3-5/16	7-7/8	37-5/8	
	254	15	27AB	11-1/4	50-13/16	55-5/16	11-3/16	15/16	10-1/4	39-5/8	
	254	15	27AC	11-1/4	51-13/16	56-5/16	11-3/16	15/16	10-1/4	39-5/8	
	254	15	CP	11-1/4	53-5/16	57-13/16	11-3/16	15/16	10-1/4	39-5/8	
	254	15	DP	11-1/4	56	60-1/2	11-3/16	15/16	10-1/4	39-5/8	
	254	15	BP	11-1/4	44	48-1/2	11-3/16	15/16	10-1/4	39-5/8	
	256	20	27AC	11-1/4	51-13/16	56-5/16	11-3/16	7/16†	11-5/8	43-5/8	
	256	20	CP	11-1/4	53-5/16	57-13/16	11-3/16	7/16†	11-5/8	43-5/8	
	256	20	DP	11-1/4	56	60-1/2	11-3/16	7/16†	11-5/8	43-5/8	
2 x 2-1/2 x 9 3500 R.P.M.	254	15	EP	11-3/4	56-11/16	61-3/16	12	13/16	11-3/16	40-9/16	4
	256	20	EP	11-3/4	56-11/16	61-3/16	12	9/16†	12-9/16	44-9/16	5
	254	15	EP	11-3/4	57-3/16	62-3/16	12-3/4	13/16	11-15/16	41-13/16	
	256	20	EP	11-3/4	57-3/16	62-3/16	12-3/4	9/16†	13-5/16	45-13/16	6
	254	15	EP	11-3/4	57-11/16	63-3/16	13-1/8	13/16	12-5/16	42-11/16	
	256	20	EP	11-3/4	57-11/16	63-3/16	13-1/8	9/16†	13-11/16	46-11/16	

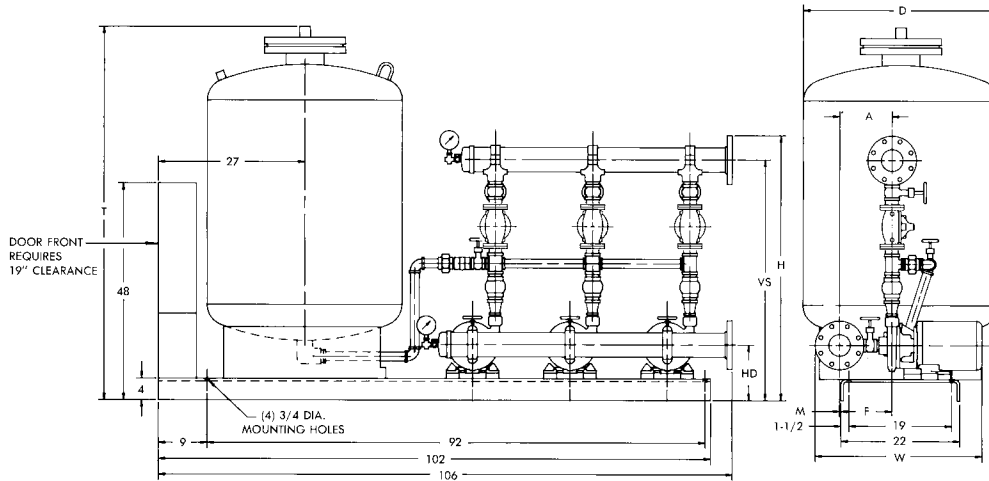
PRESSURE REDUCING VALVES									
DIRECT ACTING					PILOT OPERATED				
SIZE	1-1/2	2	2-1/2	2	2-1/2	3	1-1/4	1-1/2	4
CODE	27AA	27AB	27AC	CP	DP	EP	AP	BP	FP

TANK SIZE (GALLONS)	79	106	132	158	170	211
T	59	53	61	69	80	67
D	24	30	30	30	30	36

NOTES:

- ALL DIMENSIONS IN INCHES.
- DIMENSIONS MAY VARY ±1/2.
- NOT FOR CONSTRUCTION PURPOSES UNLESS CERTIFIED.
- DISCHARGE AND SUCTION FLANGES ANSI STANDARD FLAT FACE 125#.
- 1 GROUT HOLE IS PROVIDED IN TOP OF BASE.

†DISCHARGE CENTERLINE, "F" DIMENSION IS LEFT OF BASE FOR THESE PUMP SELECTIONS ONLY.



PUMP SIZE	MTR. FR.	H.P.	P R V	HD	VS	H	A	F	M	W	SUCTION & DISCHARGE MANIFOLDS
1-1/2 x 2 x 9C 1750 R.P.M.	143	1	27AA	11-1/4	43-7/8	48-3/8	11-13/16	10-3/16	1	32-7/8	4
	143	1	27AB	11-1/4	50-13/16	55-5/16	11-13/16	10-3/16	1	32-7/8	
	143	1	AP	11-1/4	46-7/16	50-15/16	11-13/16	10-3/16	1	32-7/8	
	143	1	BP	11-1/4	44	48-1/2	11-13/16	10-3/16	1	32-7/8	
	145	1-1/2	27AA	11-1/4	43-7/8	48-3/16	11-13/16	10-3/16	1	33-7/8	
	145	1-1/2	27AB	11-1/4	50-13/16	55-5/16	11-13/16	10-3/16	1	33-7/8	
	145	1-1/2	AP	11-1/4	46-7/16	50-15/16	11-13/16	10-3/16	1	33-7/8	
	145	1-1/2	BP	11-1/4	44	48-1/2	11-13/16	10-3/16	1	33-7/8	
	145	2	27AA	11-1/4	43-7/8	48-3/8	11-13/16	10-3/16	1	33-7/8	
	145	2	27AB	11-1/4	50-13/16	55-5/16	11-13/16	10-3/16	1	33-7/8	
	145	2	27AC	11-1/4	51-13/16	56-5/16	11-13/16	10-3/16	1	33-7/8	
	145	2	CP	11-1/4	53-5/16	57-13/16	11-13/16	10-3/16	1	33-7/8	
	145	2	AP	11-1/4	46-7/16	50-15/16	11-13/16	10-3/16	1	33-7/8	
	145	2	BP	11-1/4	44	48-1/2	11-13/16	10-3/16	1	33-7/8	
	182	3	27AA	11-1/4	43-7/8	48-3/8	11-13/16	10-3/16	1	33-7/8	
	182	3	27AB	11-1/4	50-13/16	55-5/16	11-13/16	10-3/16	1	33-7/8	
	182	3	27AC	11-1/4	51-13/16	56-5/16	11-13/16	10-3/16	1	33-7/8	
	182	3	CP	11-1/4	53-5/16	57-13/16	11-13/16	10-3/16	1	33-7/8	
	182	3	AP	11-1/4	46-7/16	50-15/16	11-13/16	10-3/16	1	33-7/8	
	182	3	BP	11-1/4	44	48-1/2	11-13/16	10-3/16	1	33-7/8	
2 x 2-1/2 x 9 1750 R.P.M.	145	2	27AC	11-3/4	53-5/16	57-13/16	12	9-5/16	2-11/16	34-13/16	4
	145	2	CP	11-3/4	48-7/8	53-3/8	12	9-5/16	2-11/16	34-13/16	
	145	2	DP	11-3/4	53-5/8	58-1/8	12	9-5/16	2-11/16	34-13/16	
	182	3	27AB	11-3/4	48-7/8	53-3/8	12	9-5/16	2-11/16	34-13/16	
	182	3	27AC	11-3/4	53-5/16	57-13/16	12	9-5/16	2-11/16	34-13/16	
	182	3	CP	11-3/4	48-7/8	53-3/8	12	9-5/16	2-11/16	34-13/16	
	182	3	DP	11-3/4	53-5/8	58-1/8	12	9-5/16	2-11/16	34-13/16	
	182	3	BP	11-3/4	48-5/16	52-13/16	12	9-5/16	2-11/16	34-13/16	
	184	5	27AC	11-3/4	53-5/16	57-13/16	12	9-5/16	2-11/16	34-13/16	
	184	5	CP	11-3/4	48-7/8	53-3/8	12	9-5/16	2-11/16	34-13/16	
184	5	DP	11-3/4	53-5/8	58-1/8	12	9-5/16	2-11/16	34-13/16		

PRESSURE REDUCING VALVES									
DIRECT ACTING					PILOT OPERATED				
SIZE	1-1/2	2	2-1/2	2	2-1/2	3	1-1/4	1-1/2	4
CODE	27AA	27AB	27AC	CP	DP	EP	AP	BP	FP

TANK SIZE (GALLONS)	79	106	132	158	170	211
T	59	53	61	69	80	67
D	24	30	30	30	30	36

NOTES:

1. ALL DIMENSIONS IN INCHES.
2. DIMENSIONS MAY VARY ±1/2.
3. NOT FOR CONSTRUCTION PURPOSES UNLESS CERTIFIED.
4. DISCHARGE AND SUCTION FLANGES ANSI STANDARD FLAT FACE 125#.
5. 1 GROUT HOLE IS PROVIDED IN TOP OF BASE.

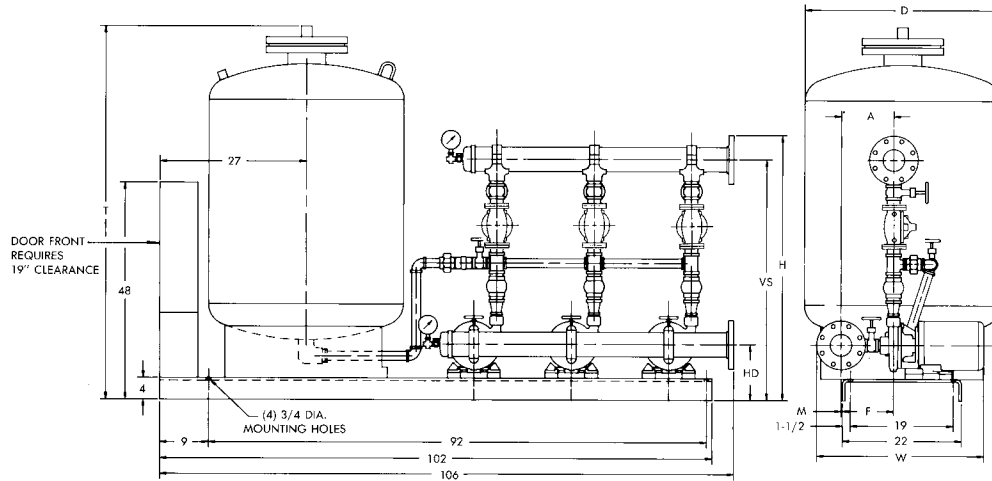
AURORA MODEL 763 PUMPS - AURORA - PC TRIPLEX - WITH TANK 1750 R.P.M. PRESSURE CONTROL SYSTEMS

SECTION 750/760 PAGE 227

DATED JANUARY 1999

SUPERSEDES PAGE 227

DATED JUNE 1994



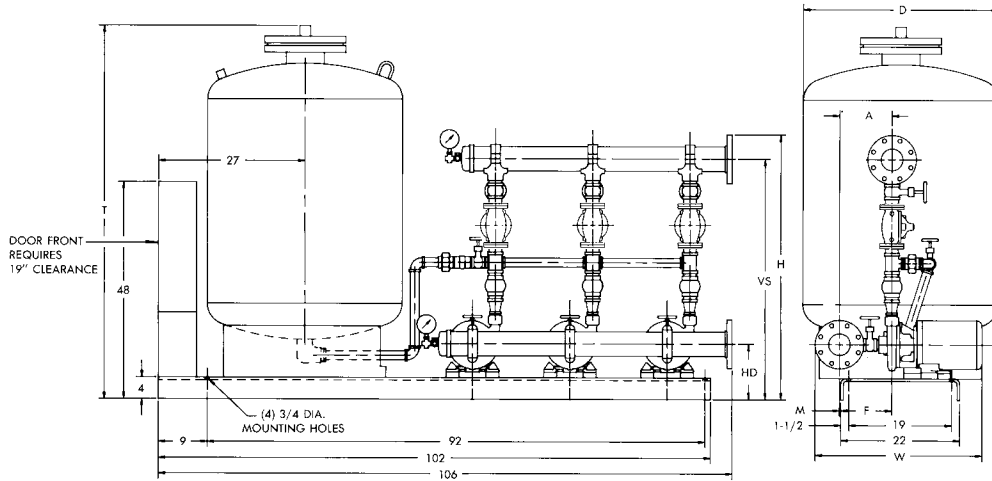
PUMP SIZE	MTR. FR.	H.P.	P R V	HD	VS	H	A	F	M	W	SUCTION & DISCHARGE MANIFOLDS	
2-1/2 x 3 x 9 1750 R.P.M.	182	3	27AC	11-3/4	49-9/16	54-1/16	13-1/16	9-3/16	3-7/8	36	4	
	182	3	CP	11-3/4	52-1/8	56-5/8	13-1/16	9-3/16	3-7/8	36		
	182	3	DP	11-3/4	50-7/8	55-3/8	13-1/16	9-3/16	3-7/8	36		
	182	3	EP	11-3/4	57-3/16	61-11/16	13-1/16	9-3/16	3-7/8	36		
	184	5	27AC	11-3/4	49-9/16	54-1/16	13-1/16	9-3/16	3-7/8	36		
	184	5	CP	11-3/4	52-1/8	56-5/8	13-1/16	9-3/16	3-7/8	36		
	2 x 3 x 11 1750 R.P.M.	184	5	DP	11-3/4	50-7/8	55-3/8	13-1/16	9-3/16	3-7/8	36	5
		184	5	EP	11-3/4	57-3/16	61-11/16	13-1/16	9-3/16	3-7/8	36	
		213	7-1/2	EP	11-3/4	57-3/16	61-11/16	13-9/16	3-13/16	9-1/4	37-3/4	
		182	3	DP	11-3/4	51-5/8	56-5/8	13-9/16	9-3/16	3-7/8	36-1/2	
		182	3	EP	11-3/4	57-11/16	62-11/16	13-9/16	9-3/16	3-7/8	36-1/2	
		184	5	DP	11-3/4	51-5/8	56-5/8	13-9/16	9-3/16	3-7/8	36-1/2	
1-1/2 x 2 x 12 1750 R.P.M.		184	5	EP	11-3/4	57-11/16	62-11/16	13-9/16	9-3/16	3-7/8	36-1/2	6
		213	7-1/2	EP	11-3/4	57-11/16	62-11/16	13-9/16	3-13/16	9-3/4	38-1/4	
		184	5	EP	11-3/4	58-3/16	63-11/16	14-1/16	9-3/16	3-7/8	37	
		213	7-1/2	EP	11-3/4	58-3/16	63-11/16	14-1/16	3-13/16	10-1/4	38-3/4	
		213	7-1/2	27AC	12-1/4	54-13/16	59-5/16	13-7/16	3-7/8	9-9/16	38-1/16	
		213	7-1/2	CP	12-1/4	50-3/8	54-7/8	13-7/16	3-7/8	9-9/16	38-1/16	
	1-1/2 x 2 x 12 1750 R.P.M.	213	7-1/2	DP	12-1/4	55-1/8	59-5/8	13-7/16	3-7/8	9-9/16	38-1/16	4
		215	10	DP	12-1/4	55-1/8	59-5/8	13-7/16	3-1/8	10-5/16	40-1/16	
		213	7-1/2	EP	12-1/4	58-3/16	62-11/16	13-7/16	3-7/8	9-9/16	38-1/16	
		215	10	EP	12-1/4	58-3/16	62-11/16	13-7/16	3-1/8	10-5/16	40-1/16	
		213	7-1/2	EP	12-1/4	58-11/16	63-11/16	13-15/16	3-7/8	10-1/16	38-1/16	
		215	10	EP	12-1/4	58-11/16	63-11/16	13-15/16	3-1/8	10-13/16	40-1/16	
1-1/2 x 2 x 12 1750 R.P.M.		213	7-1/2	EP	12-1/4	59-3/16	64-11/16	14-7/16	3-7/8	10-9/16	38-1/16	6
		215	10	EP	12-1/4	59-3/16	64-11/16	14-7/16	3-1/8	11-5/16	40-1/16	
		213	7-1/2	27AA	13	46-5/8	51-1/8	11-5/16	3-15/16	7-3/8	35-7/8	
		213	7-1/2	AP	13	49-3/16	53-11/16	11-5/16	3-15/16	7-3/8	35-7/8	
		213	7-1/2	27AB	13	53-9/16	58-1/8	11-5/16	3-15/16	7-3/8	35-7/8	
		213	7-1/2	BP	13	46-3/4	51-1/4	11-5/16	3-15/16	7-3/8	35-7/8	
	1-1/2 x 2 x 12 1750 R.P.M.	213	7-1/2	27AC	13	54-5/16	58-13/16	11-5/16	3-15/16	7-3/8	35-7/8	4
		213	7-1/2	CP	13	56-7/16	60-15/16	11-5/16	3-15/16	7-3/8	35-7/8	
		213	7-1/2	DP	13	58-3/4	63-1/4	11-5/16	3-15/16	7-3/8	35-7/8	
		215	10	27AC	13	54-5/16	58-13/16	11-5/16	3-3/16	8-1/8	37-7/8	
		215	10	CP	13	56-7/8	60-15/16	11-5/16	3-3/16	8-1/8	37-7/8	
		215	10	DP	13	58-3/4	63-1/4	11-5/16	3-3/16	8-1/8	37-7/8	

NOTES:

- ALL DIMENSIONS IN INCHES.
- DIMENSIONS MAY VARY ±1/2.
- NOT FOR CONSTRUCTION PURPOSES UNLESS CERTIFIED.
- DISCHARGE AND SUCTION FLANGES ANSI STANDARD FLAT FACE 125#.
- 1 GROUT HOLE IS PROVIDED IN TOP OF BASE.

PRESSURE REDUCING VALVES									
DIRECT ACTING					PILOT OPERATED				
SIZE	1-1/2	2	2-1/2	2	2-1/2	3	1-1/4	1-1/2	4
CODE	27AA	27AB	27AC	CP	DP	EP	AP	BP	FP

TANK SIZE (GALLONS)	79	106	132	158	170	211
T	59	53	61	69	80	67
D	24	30	30	30	30	36



PUMP SIZE	MTR. FR.	H.P.	P R V	HD	VS	H	A	F	M	W	SUCTION & DISCHARGE MANIFOLDS
2-1/2 x 3 x 12 1750 R.P.M.	254	15	DP	13-1/4	53-3/8	57-7/8	13-1/16	9/16	12-1/2	41-7/8	4
	213	7-1/2	EP	13-1/4	59-11/16	64-3/16	13-1/16	3-11/16	9-3/8	37-7/8	
	215	10	EP	13-1/4	59-11/16	64-3/16	13-1/16	2-15/16	10-1/8	39-7/8	
	254	15	EP	13-1/4	59-11/16	64-3/16	13-1/16	9/16	12-1/2	41-7/8	
	213	7-1/2	EP	13-1/4	60-3/16	65-3/16	13-9/16	3-11/16	9-7/8	38-7/8	5
	215	10	EP	13-1/4	60-3/16	65-3/16	13-9/16	2-15/16	10-5/8	40-7/8	
	254	15	EP	13-1/4	60-3/16	65-3/16	13-9/16	9/16	13	42-7/8	
	256	20	EP	13-1/4	60-3/16	65-3/16	13-9/16	13/16†	14-3/8	46-7/8	
	215	10	EP	13-1/4	60-11/16	66-3/16	14-1/16	2-15/16	11-1/8	41-7/8	6
	254	15	EP	13-1/4	60-11/16	66-3/16	14-1/16	9/16	13-1/2	43-7/8	
	256	20	EP	13-1/4	60-11/16	66-3/16	14-1/16	13/16†	14-7/8	47-7/8	
	254	15	FP	13-1/4	70-7/16	75-15/16	14-1/16	9/16	13-1/2	43-7/8	
	256	20	FP	13-1/4	70-7/16	75-15/16	14-1/16	13/16†	14-7/8	47-7/8	

PRESSURE REDUCING VALVES									
DIRECT ACTING					PILOT OPERATED				
SIZE	1-1/2	2	2-1/2	2	2-1/2	3	1-1/4	1-1/2	4
CODE	27AA	27AB	27AC	CP	DP	EP	AP	BP	FP

TANK SIZE (GALLONS)	79	106	132	158	170	211
T	59	53	61	69	80	67
D	24	30	30	30	30	36

NOTES:

1. ALL DIMENSIONS IN INCHES.
2. DIMENSIONS MAY VARY ±1/2.
3. NOT FOR CONSTRUCTION PURPOSES UNLESS CERTIFIED.
4. DISCHARGE AND SUCTION FLANGES ANSI STANDARD FLAT FACE 125#.
5. 1 GROUT HOLE IS PROVIDED IN TOP OF BASE.

†DISCHARGE CENTERLINE, "F" DIMENSION IS LEFT OF BASE FOR THESE PUMP SELECTIONS ONLY.

Dated JULY 1989

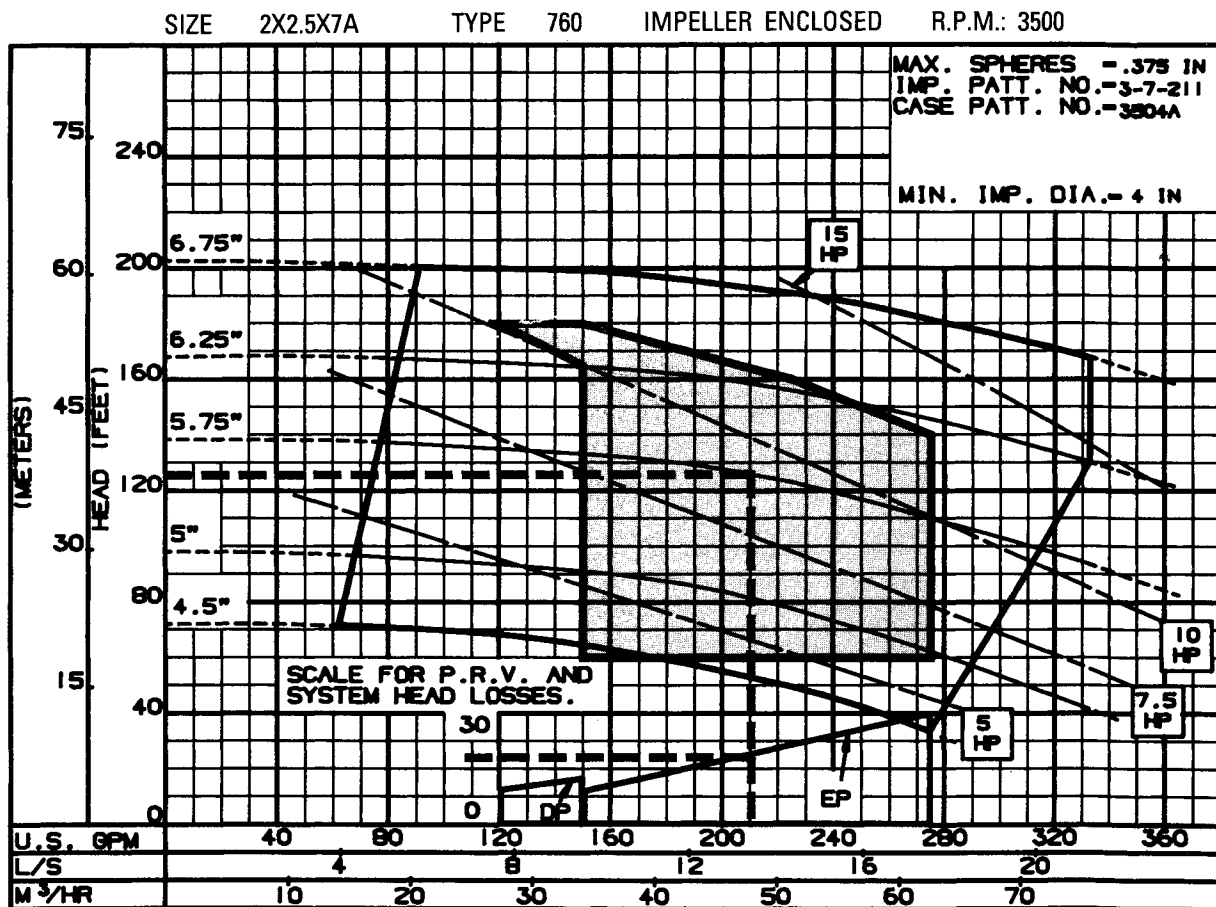
SUPERSEDES PAGE 403
DATED NOVEMBER 1987

SIZING OF CONSTANT SPEED BOOSTER PUMPS

THERE ARE PRESSURE REDUCING VALVE (PRV) AND PIPING LOSSES WHICH MUST BE ACCOUNTED FOR WHEN SIZING THE PUMPS. THE FOLLOWING EXAMPLE WILL ILLUSTRATE THAT SELECTION PROCESS.

EXAMPLE: SELECT PUMPS FOR A DUPLEX SYSTEM TO SUPPLY 420 G.P.M. AT A BOOST OF 100 FEET.

- 1) DIVIDE THE TOTAL CAPACITY OF 420 G.P.M. BY 2 TO DETERMINE SINGLE PUMP CAPACITY, OR 210 G.P.M. PER PUMP. NOTE: SOME SPECIFICATIONS MAY REQUIRE THAT THE SUM OF THE FLOWS OF THE INDIVIDUAL PUMPS BE GREATER THAN THE TOTAL SYSTEM FLOW. FOR EXAMPLE IT MIGHT STATE THAT EACH PUMP OF A DUPLEX SYSTEM IS CAPABLE OF SUPPLYING 75% OF TOTAL FLOW. ANOTHER SPECIFICATION MIGHT STATE THAT THE FLOW OF EACH PUMP IS TO BE A SPECIFIC PERCENTAGE OF THE TOTAL FLOW. FOR EXAMPLE ONE PUMP AT 20% AND TWO PUMPS AT 40% OF TOTAL FLOW. THESE VARIATIONS WILL DETERMINE THE FLOW REQUIREMENTS FOR EACH PUMP TO BE SELECTED. IT IS LIKELY THAT DIFFERENT PUMP SIZES ARE REQUIRED.
- 2) REFER TO SELECTION CHARTS ON PAGES 397 AND 398 AND DETERMINE THAT A SIZE 2 X 2.5 X 7A PUMP AT 3500 R.P.M. IS IN THE RECOMMENDED SELECTION RANGE FOR THE EXAMPLE HEAD CAPACITY REQUIREMENTS.
- 3) REFER TO THE PERFORMANCE CURVE FOR THAT SIZE PUMP.



- 3) ENTER CURVE ON LOWER SCALE AT 210 G.P.M. AND READ UP TO THE PRV AND SYSTEM HEAD LOSS CURVE WHICH READS 25 FEET LOSS. ADD THIS AMOUNT TO THE 100 FEET BOOST OR A TOTAL HEAD OF 125 FEET. NOTE: WHEN A HYDROPNEUMATIC TANK IS TO BE ADDED TO THE SYSTEM, MULTIPLY THE LOSS VALVE BY 1.2 TO PICK UP TANK AND ADDITIONAL PIPING LOSSES.
- 5) THE INTERSECTION OF 210 G.P.M. AND 125 FEET HEAD SHOWS 5.75" DIAMETER IMPELLER AND APPROXIMATELY 9.0 BRAKE H.P. REQUIRED. A 10 HOUSEPOWER MOTOR AT 3500 R.P.M. SHOULD BE SELECTED. IF THE SPECIFICATION CALLS FOR NON-OVERLOADING AT ANY POINT ON THE CURVE A LARGER MOTOR MAY NEED TO BE SELECTED.

ap AURORA®

PENTAIR PUMP GROUP

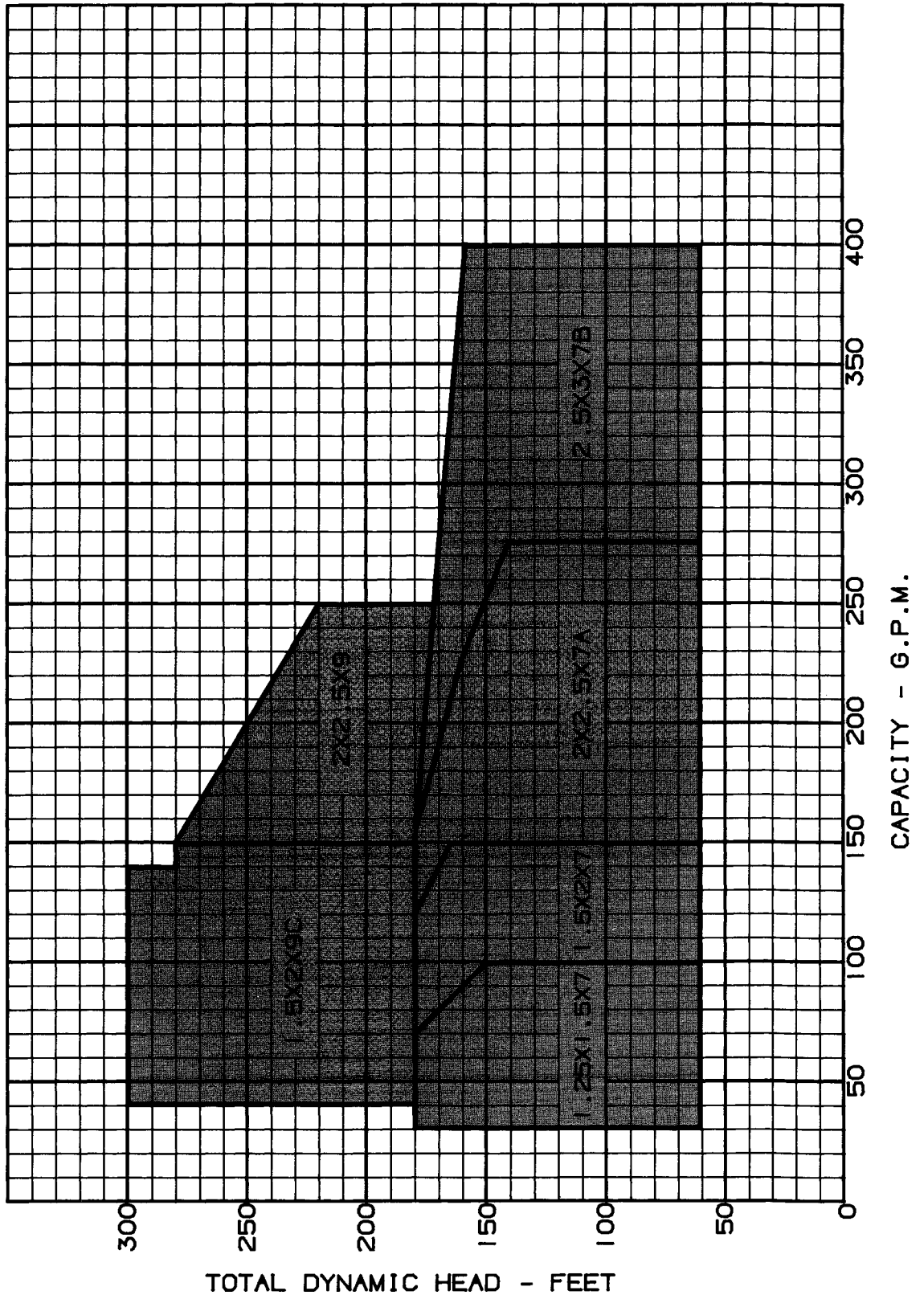
THIS PAGE LEFT INTENTIONALLY BLANK

SELECTION CHART

DATED **SEPTEMBER 1987**

3500 R.P.M.

ENCLOSED IMPELLER

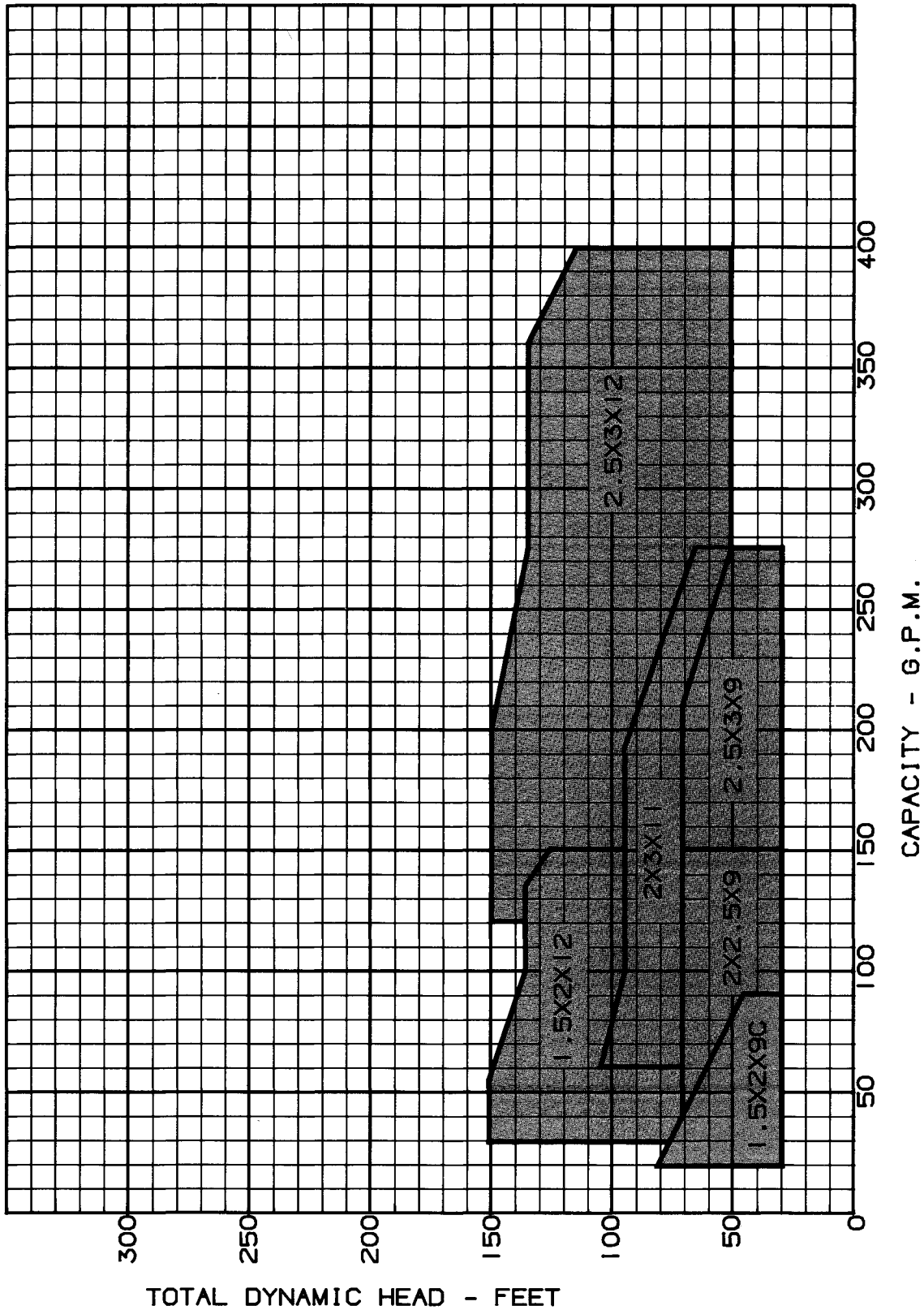


AURORA SERIES 750 & 760

SELECTION CHART

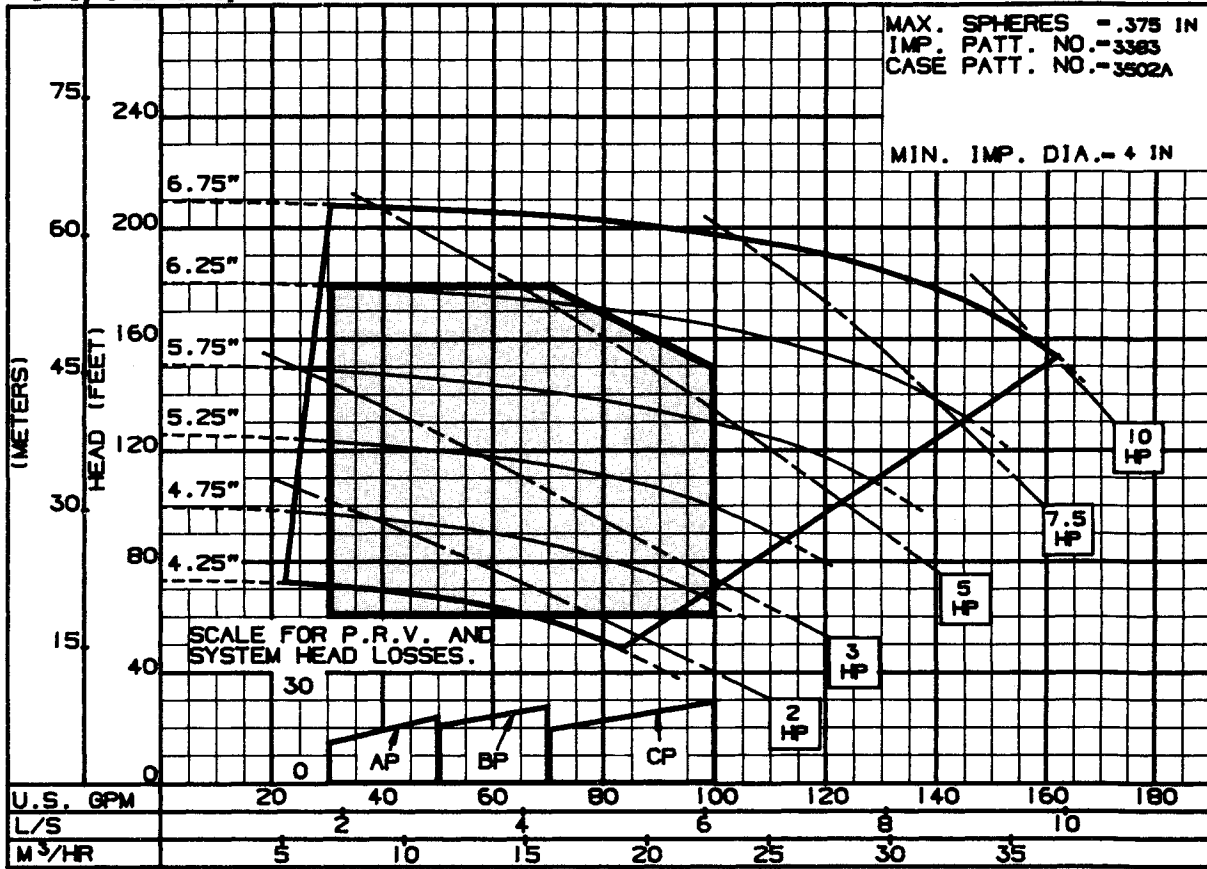
1750 R.P.M.

ENCLOSED IMPELLER



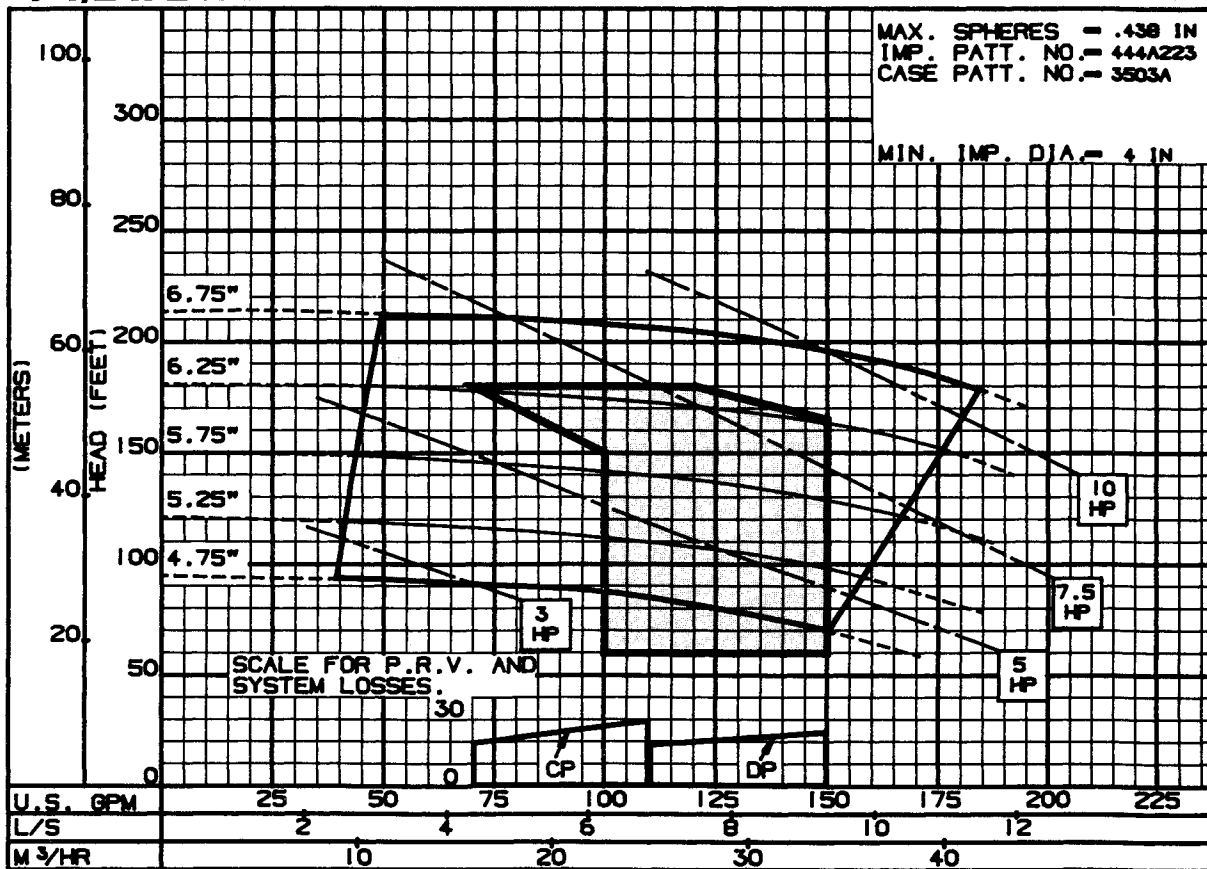
SERIES 750 / 760 ENCLOSED IMPELLER

1 1/4 x 1 1/2 x 7



3PC-144227A

1 1/2 x 2 x 7



3PC-144228A

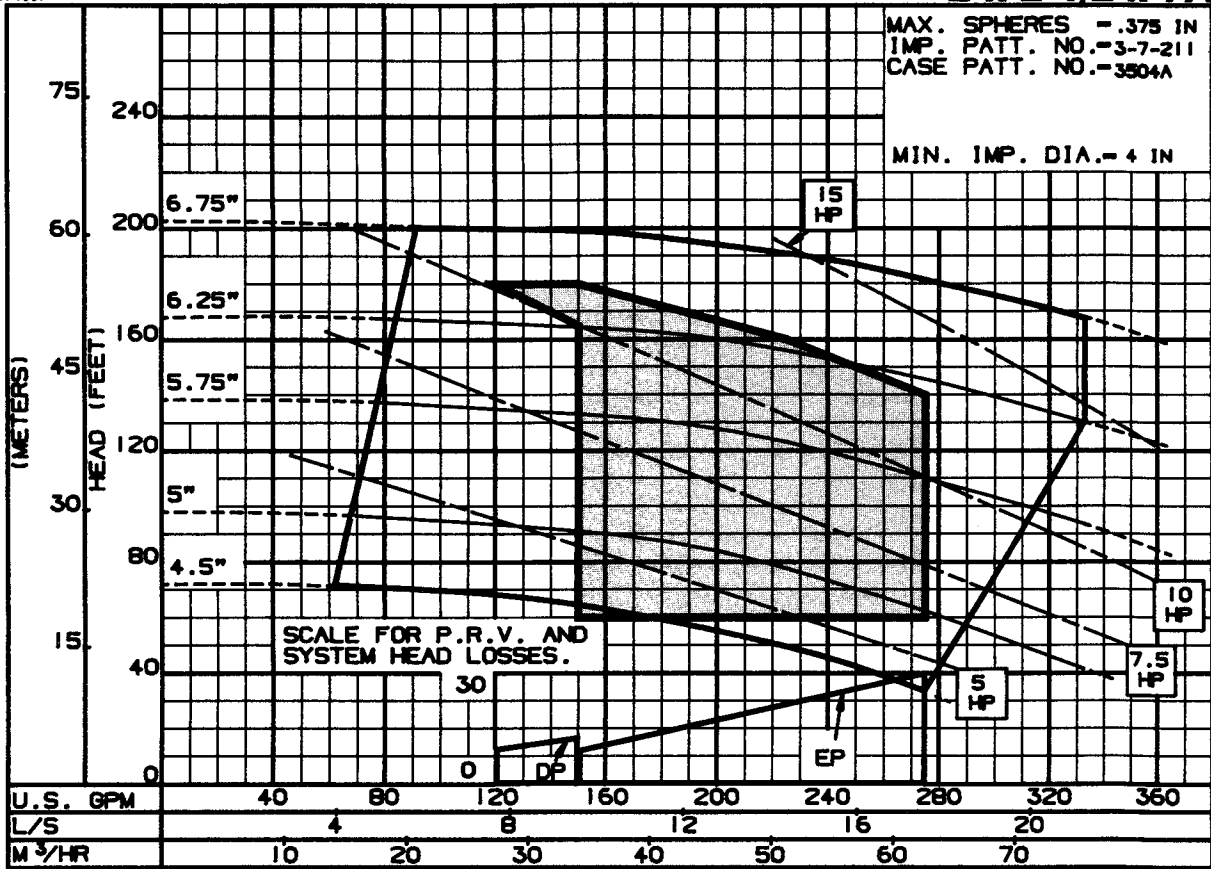
ap AURORA®

PENTAIR PUMP GROUP

SERIES 750 / 760 ENCLOSED IMPELLER

2 x 2 1/2 x 7A

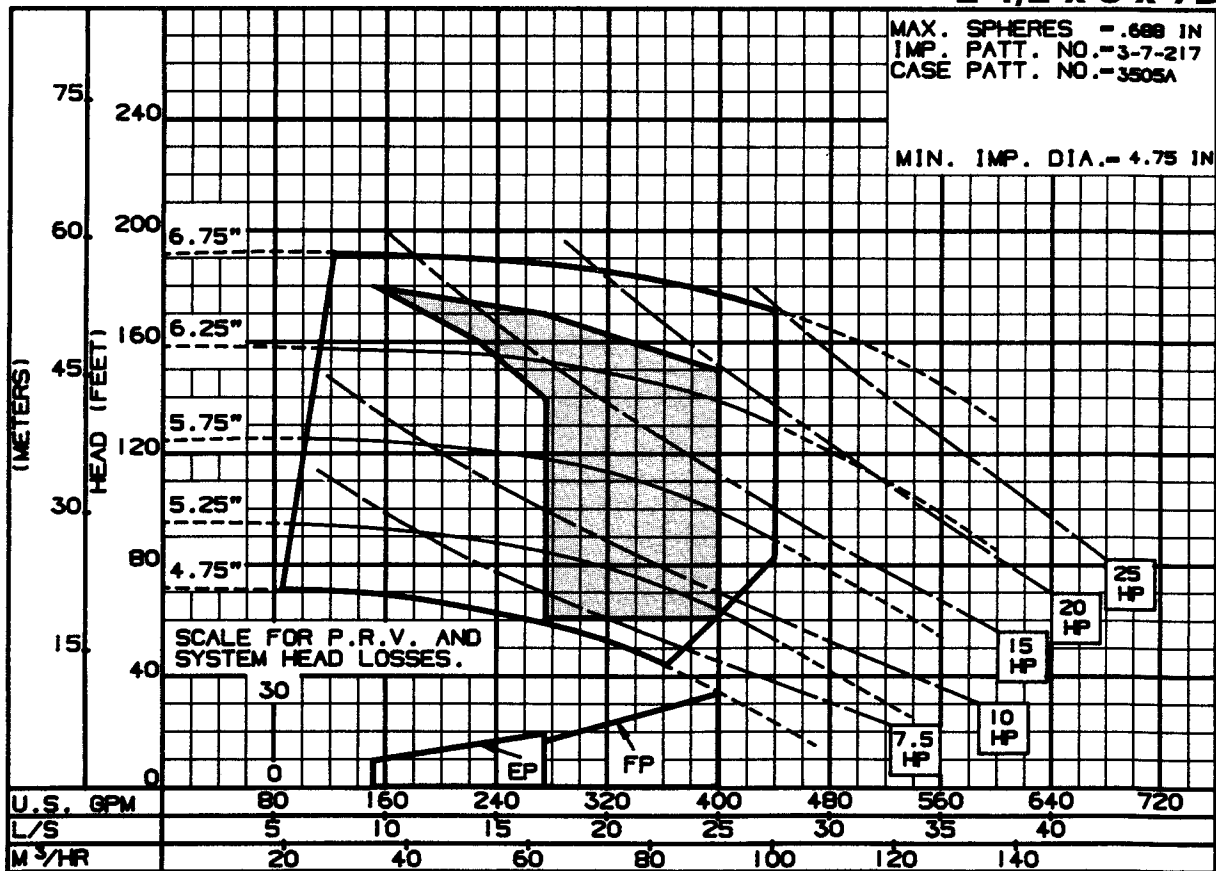
**3500
R.P.M.**



3PC-144229A

2 1/2 x 3 x 7B

**3500
R.P.M.**



3PC-145004A

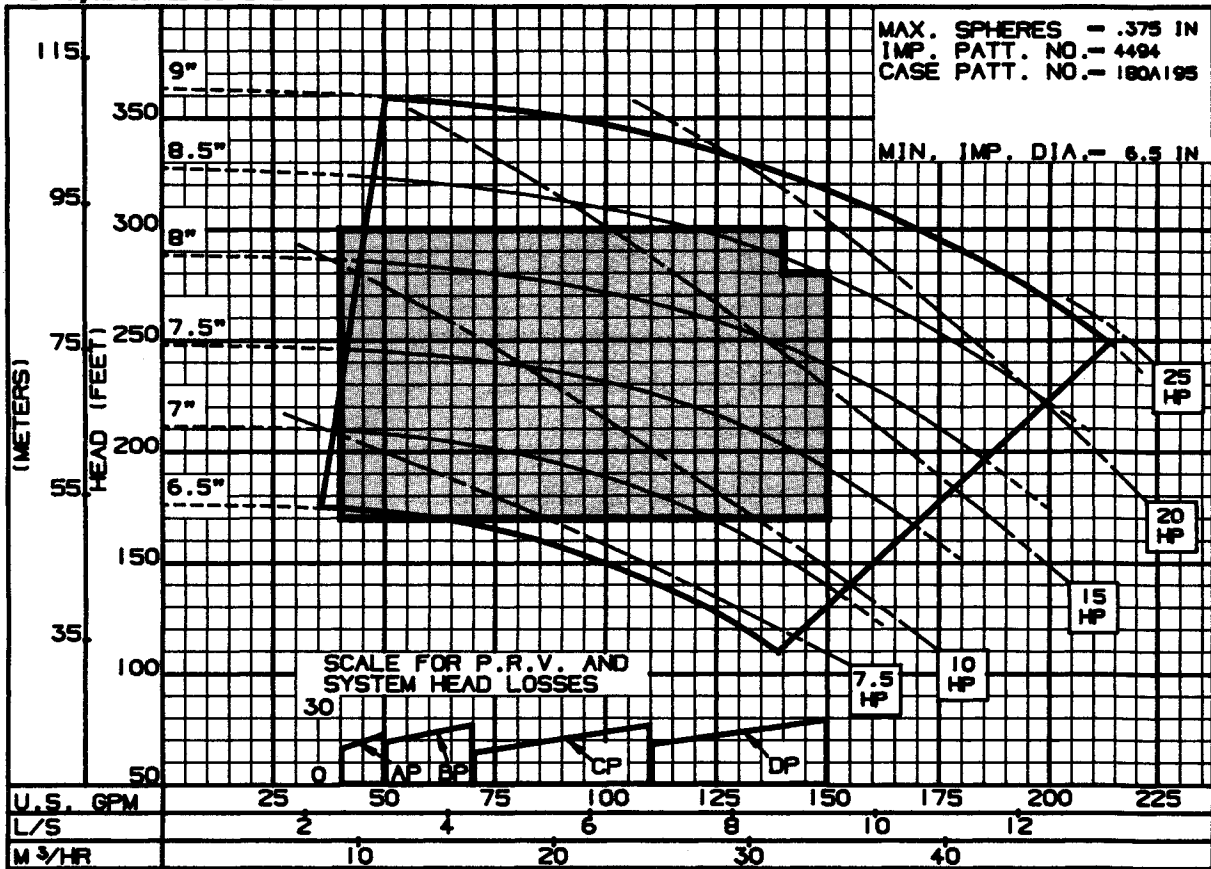
SERIES 750 / 760 ENCLOSED IMPELLER

Dated JULY 1989

SUPERSEDES PAGE 403

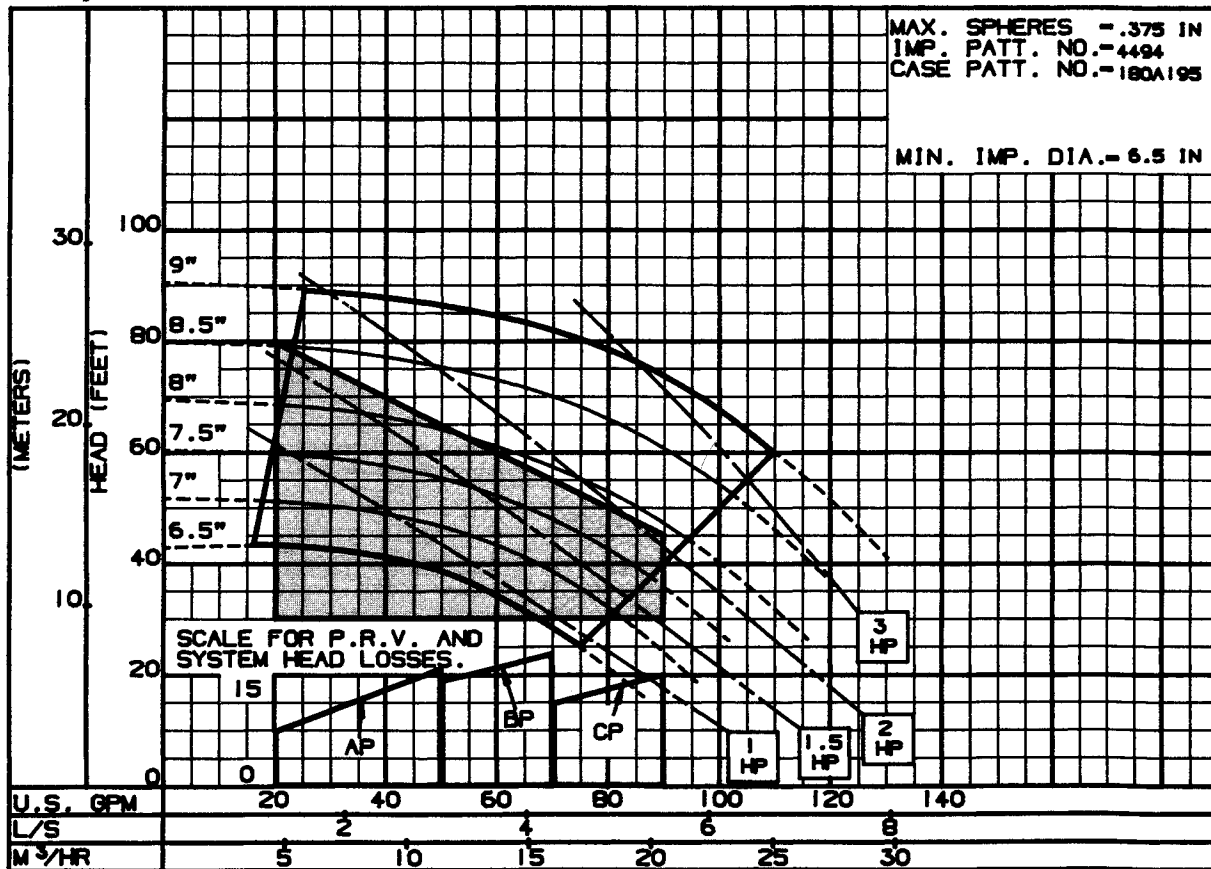
DATED NOVEMBER 1987

1 1/2 x 2 x 9C



3PC-144230A

1 1/2 x 2 x 9C



3PC-145006A

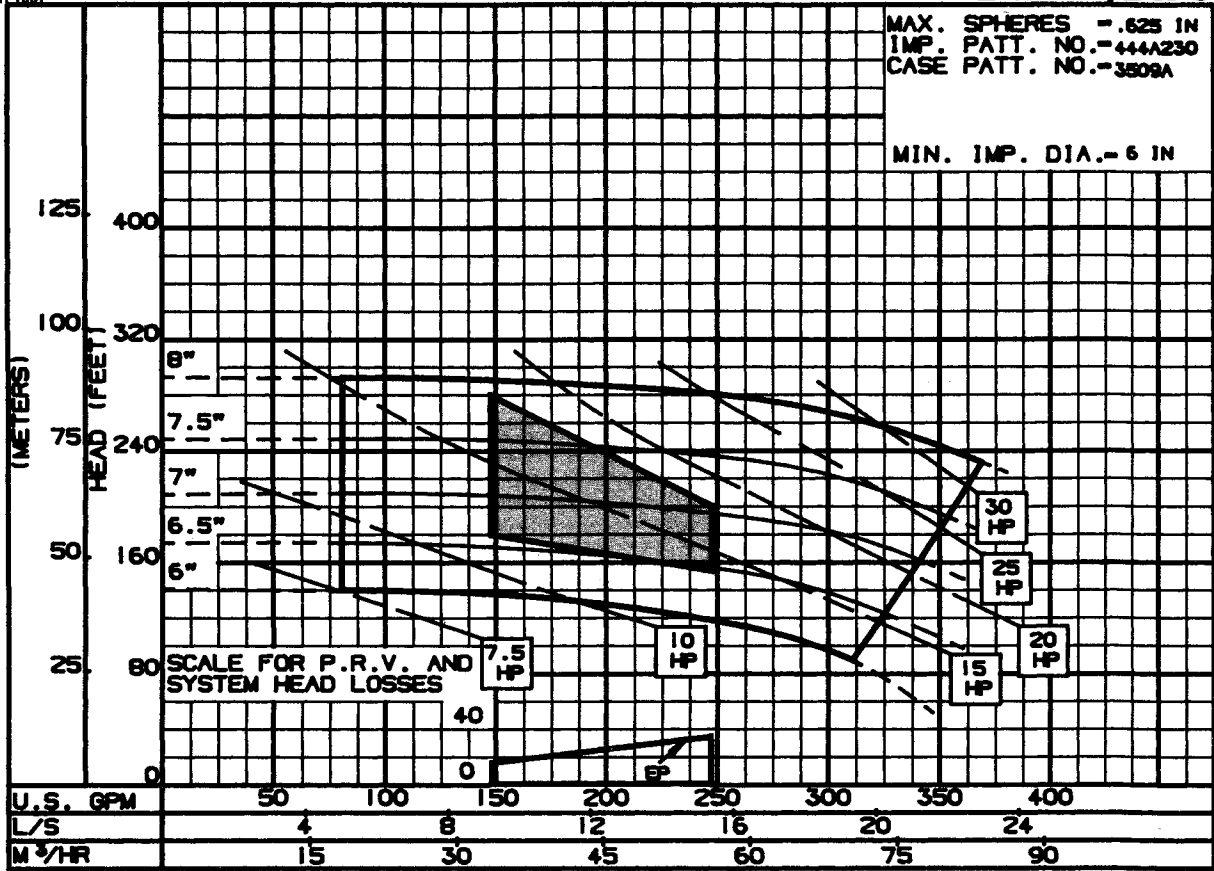
ap AURORA®

PENTAIR PUMP GROUP

SERIES 750 / 760 ENCLOSED IMPELLER

2 x 2 1/2 x 9

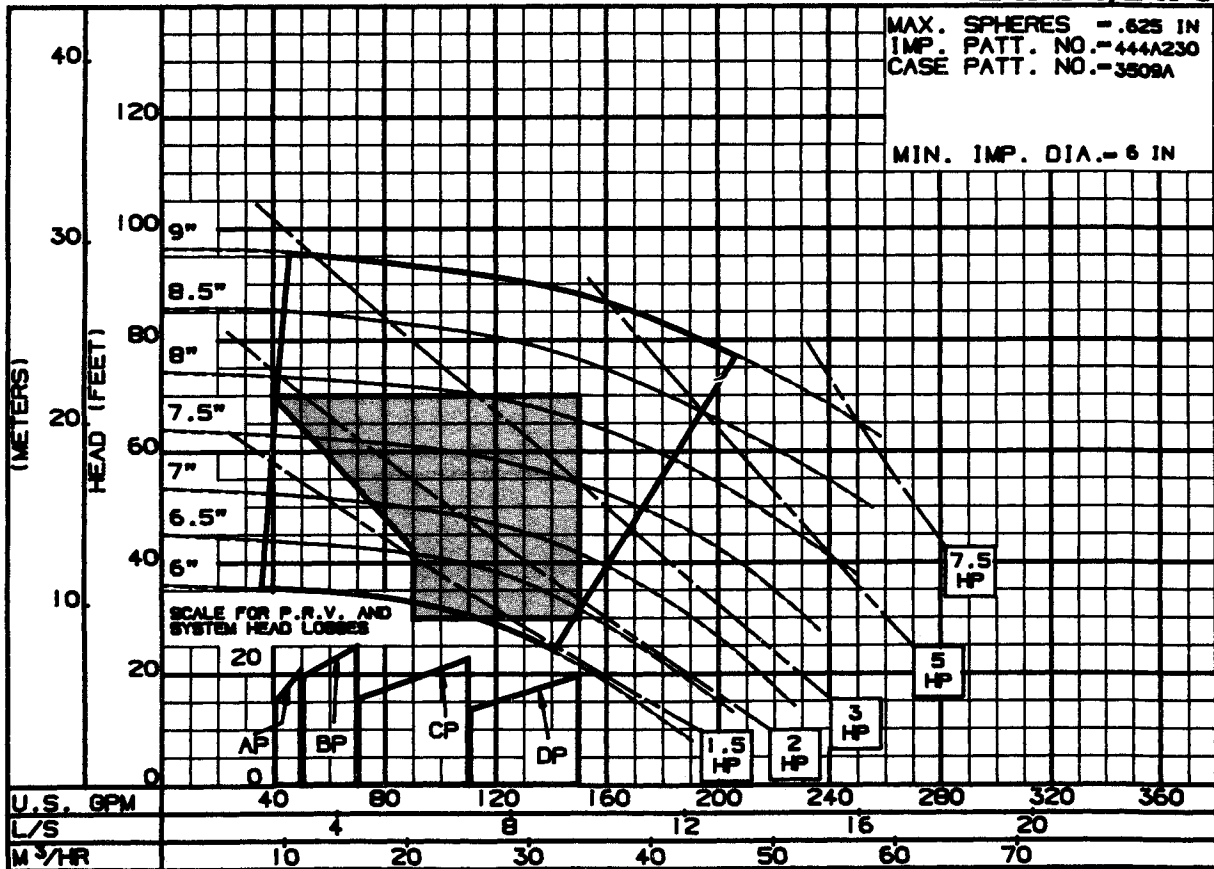
3500
R.P.M.



3PC-145008A

2 x 2 1/2 x 9

1750
R.P.M.



3PC-145009A

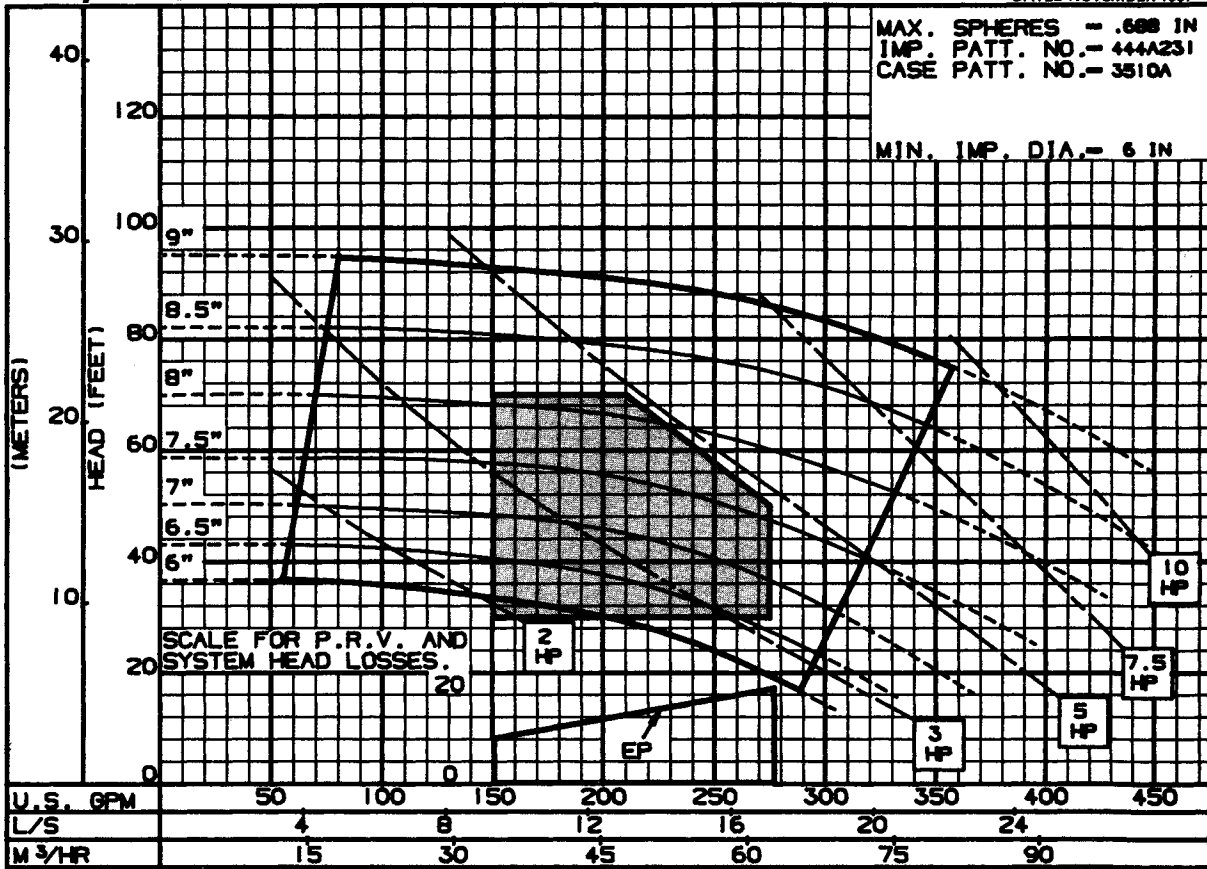
SERIES 750 / 760 ENCLOSED IMPELLER

Dated JULY 1989

SUPERSEDES PAGE 405

DATED NOVEMBER 1987

2 1/2 x 3 x 9

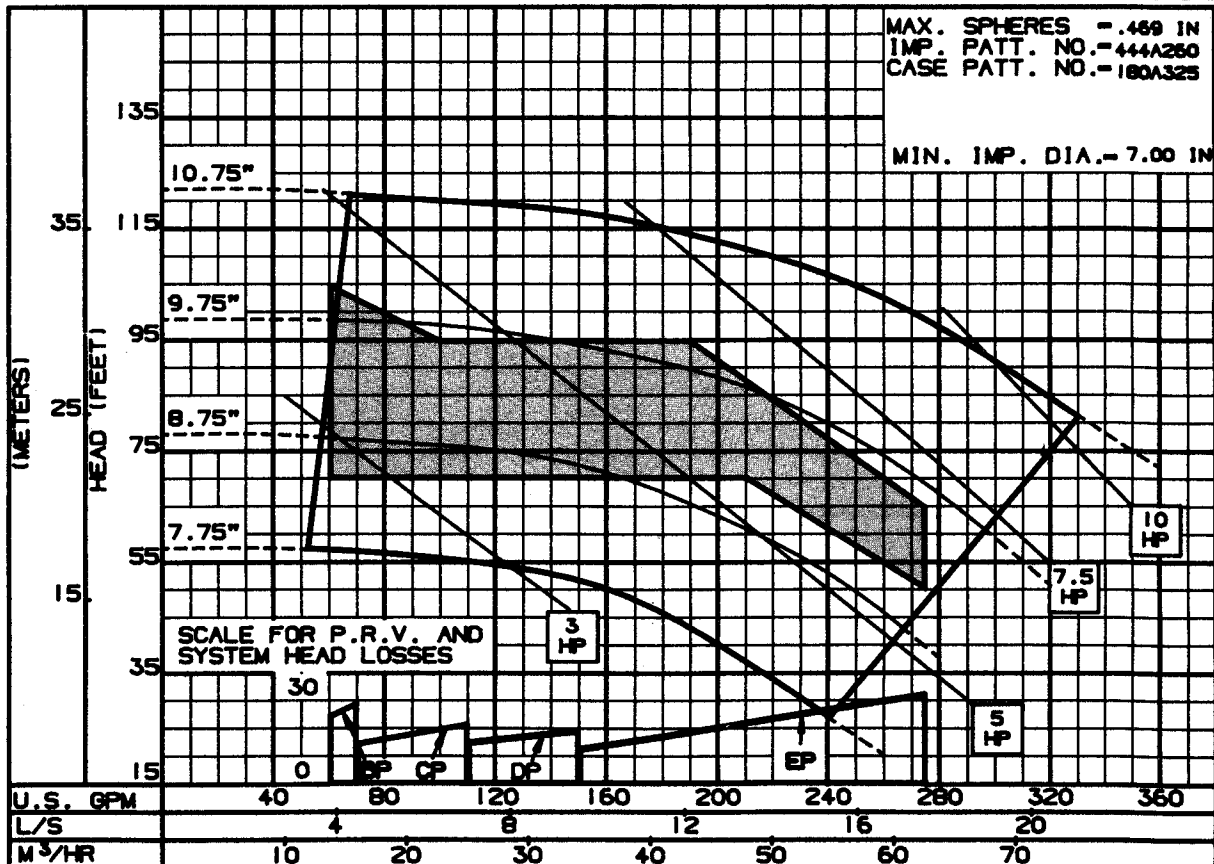


1750
R.P.M.

3PC-145005A

SERIES 750 / 760 ENCLOSED IMPELLER

2 x 3 x 11



1750
R.P.M.

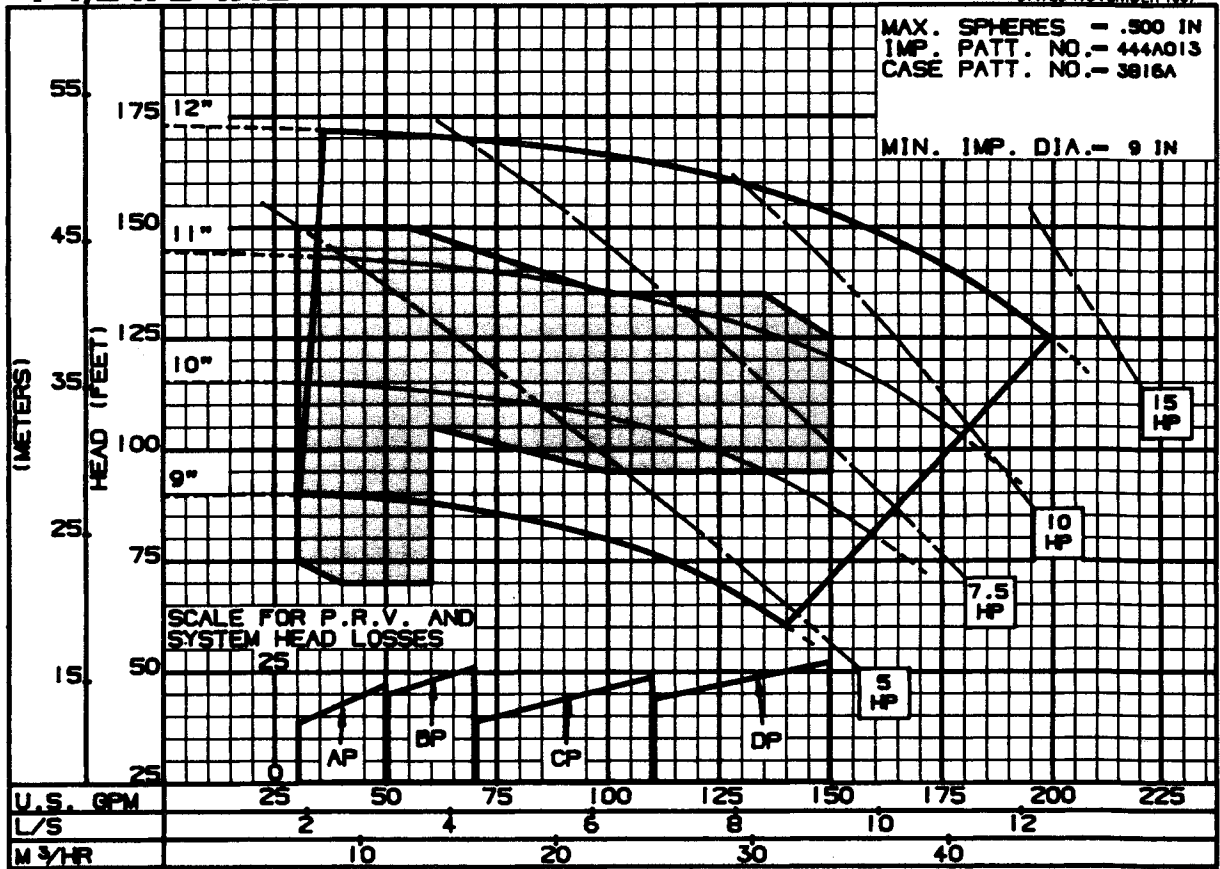
3PC-145010A

ap AURORA®

PENTAIR PUMP GROUP

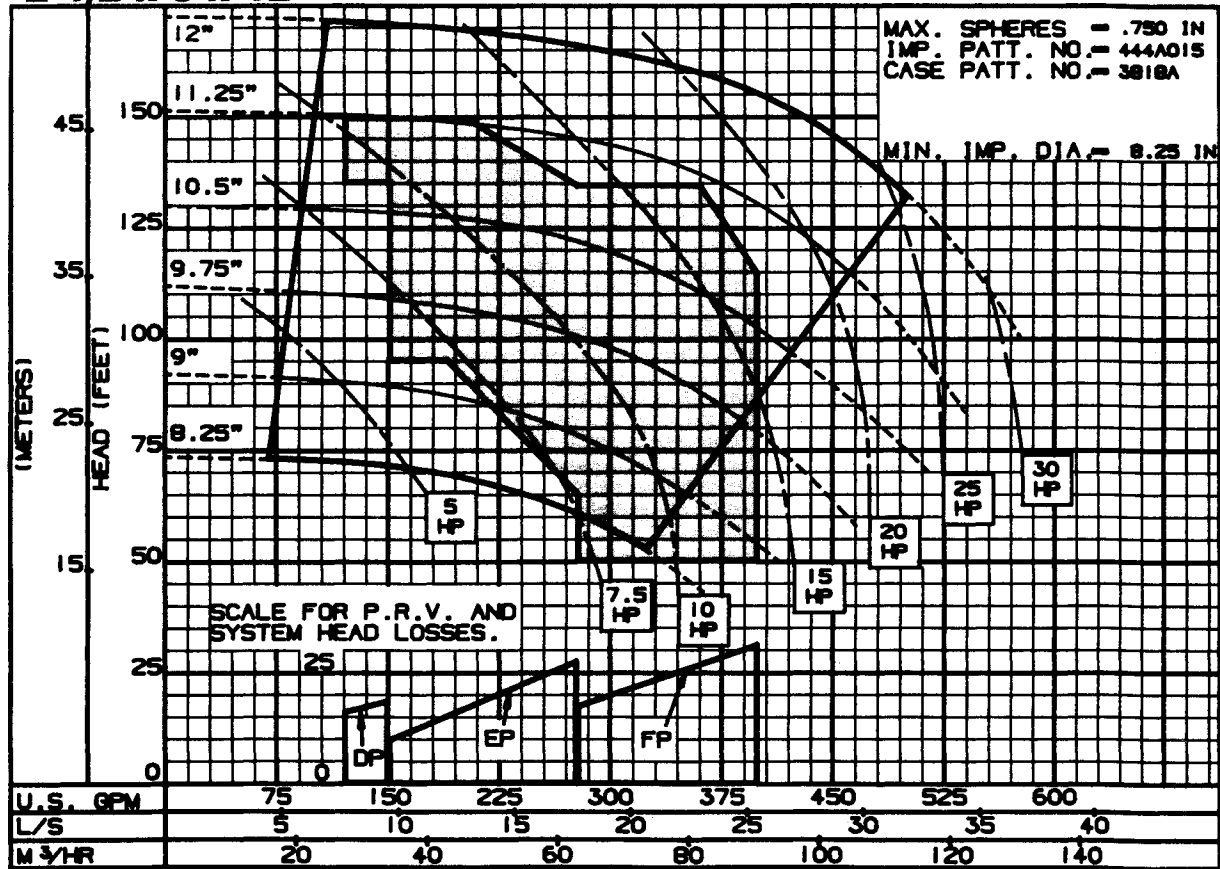
SERIES 750 / 760 ENCLOSED IMPELLER

1 1/2 x 2 x 12



3PC-145007A

2 1/2 x 3 x 12



3PC-145011A

THIS PAGE LEFT INTENTIONALLY BLANK