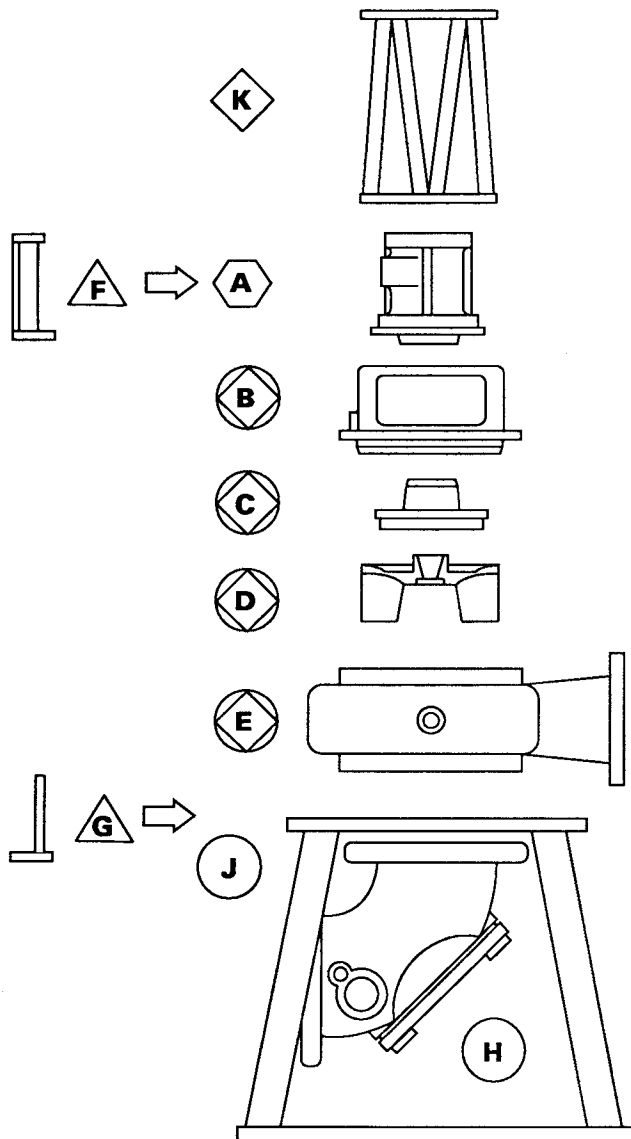


ENGINEERING DATA

INTERCHANGEABILITY

Non-Clog pumps are designed for maximum interchangeability. All models are available in all 6 sizes, offering a model and size precisely fitted to the installation requirements over a wide range of capacities. The 6 sizes are divided into 3 "Power Frames". Within a given power frame, all parts are interchangeable except for the liquid end and supports. The chart illustrates the degree of interchangeability achieved with the standard non-clog vortex pumps.



- Model 661A Only▲
- Model 663A Only◇
- Models 662A, 663A, & 664A○
- Models 661A, 662A, & 663A◊
- Models 661A, 662A, 663A, & 664A⊗

	Qty
A - Power Frames	3
B - Brackets	5
C - Stuffing Boxes	3
D - Impellers	7
E - Casings	6
F - Mounting Feet (Rear)	3
G - Mounting Feet (Front)	3
H - Elbows	3
J - Bases	2
K - Motor Supports	3

POWER FRAME SELECTION

PUMP SIZE	POWER FRAME	RPM			
		1750	1150	875	700
3x3x9	3C	3C	3C		
4x4x9	3C	3C	3C		
3x3x12	3C	3C	3C		
4x4x12	3C	3C	3C		
6x6x12	5E	4C	4C		
6x6x15		5E	5E	5E	

AURORA 660A SERIES ENGINEERING DATA

INTERCHANGEABILITY

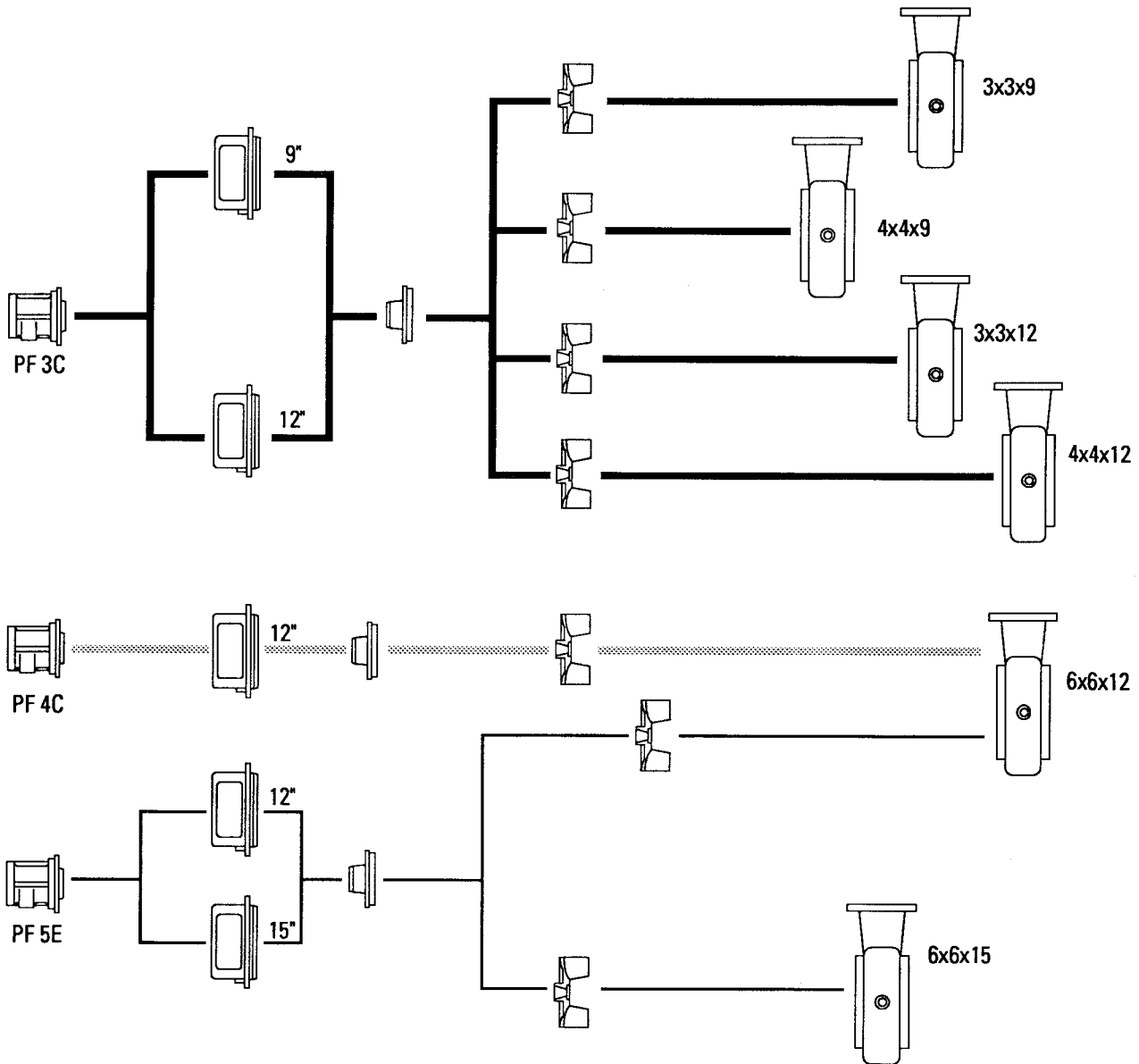
**POWER
FRAMES
(3)**

**BRACKETS
(5)**

**STUFFING
BOXES
(3)**

**IMPELLERS
(7)**

**CASINGS
(6)**



AURORA MODEL 660 PUMP SPLIT PACKING BOX OPTION

SECTION 660 PAGE 165

DATED NOVEMBER 1988

POWER FRAMES 4 & 5 ONLY



Optional Split Packing Box
With Leakage Accumulator
Gland Illustrated

Split packing boxes separate vertically through the packing insert to simplify packing replacement and shaft sleeve inspection. The insert halves are dowed, register aligned and gasketed to prevent leakage. Only six bolts need be removed to expose all of the packing and lantern ring. Remove two more bolts and the remaining packing box insert half can be removed.

The completely exposed packing and sleeve area coupled with the extra large access openings in the pump adapter provides the ultimate in packing accessibility.

Five (5) die-molded, diagonally split, packing rings complete with lantern ring line the stuffing box. The general service packing consists of graphited fiber.

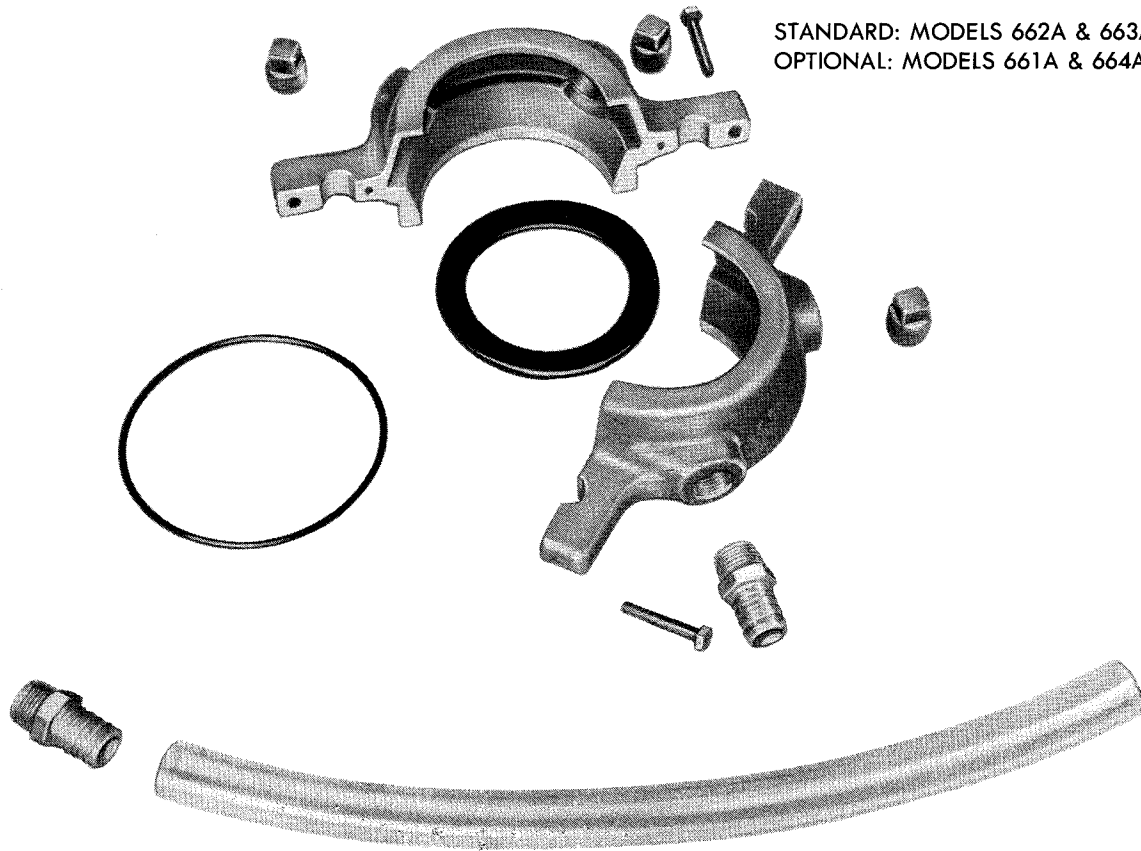
The stuffing box length, bore, sleeve diameters and lantern ring width conform with the recommended standard of the Mechanical Packing Association (MPA).

A tapped opening is provided for lubricating the stuffing box. Lubrication is accomplished by adding grease directly into the lantern ring cavity through a grease fitting or by connecting a by-pass line between the pump discharge and the stuffing box. Automatic grease seals as well as other flushing options are also available.

The standard 450 minimum brinell hardened stainless steel shaft sleeve extends through the entire length of the box and gland and is provided with a snap ring. This snap ring design allows the sleeve and the completely assembled packing box to be removed intact. Reassembly can be accomplished in the same manner. Assemble the complete stuffing box at the convenience of the work bench, install and adjust the packing for proper lubrication leakage (5-10 drops per minute after run-in).

LEAKAGE ACCUMULATOR

POWER FRAMES 4 & 5 ONLY



STANDARD: MODELS 662A & 663A
 OPTIONAL: MODELS 661A & 664A

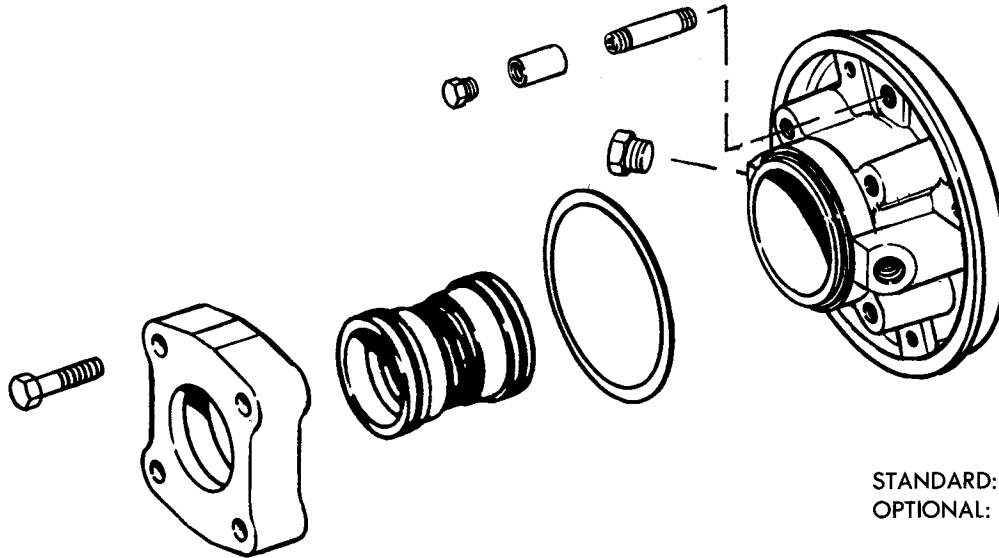
The leakage accumulator gland (sprayless, dripleless packing gland) is designed and constructed to prevent the collection of packing leakage in the pump bracket of a vertical or horizontally mounted pump. The leakage accumulator gland has a volute shape with two symmetrical halves. This gland encloses the water slinger preventing any spray from escaping and contaminating the area. The leakage is efficiently directed to a drain connection.

The two gland halves are doweled, bolted together, and sealed at the parting line with a soft liquid sealant. An "O" ring seal between the gland and packing box prevents any leakage in this area. One of the pipe tap ports on the side of the gland is fitted with a hose connector and a clear plastic section of hose, to both drain off and allow visual inspection of the leakage. The remaining ports have pipe plugs, but may be used for maintenance purposes to flush & drain debris from the accumulator.

AURORA MODEL 660 PUMP OPTIONS

SECTION 660 PAGE 167

DATED NOVEMBER 1988



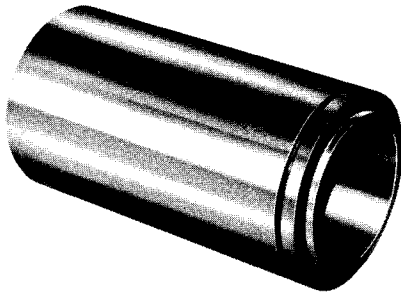
STANDARD: MODEL 664A
OPTIONAL: MODELS 661A, 662A & 663A

Double mechanical seals are recommended for gritty or abrasive applications. Seal faces are protected by clear water under pressure, injected directly into the seal cavity. Pressure in the seal box must be fifteen (15) lbs. higher than the operating pressure at the stuffing box of the pump. This forces the inner sealing faces closed and provides both faces with a film of clear sealant. If this is not done, abrasive particles may be forced under the sealing faces hastening wear. Even when the pump is not running, a pressure differential, or at least equal pressure in the seal box, is desirable. The sealant circulation for most pumping operations may be dead ended in the stuffing box. Pressures over 30 psi or RPM of 1200 max. require constant circulation to prevent overheating.

The seal box is designed for the compressed seal length and does not require any adjustments. The seal housing is extra large to provide excellent circulation of clear sealing liquid. The housing also has two tapped openings 180° apart for the flushing connections.

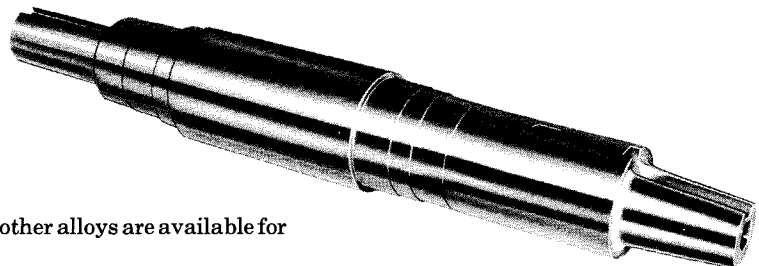
The standard shaft sleeve design is provided with a snap ring which allows the sleeve and the completely assembled seal box to be removed intact. Reassembly can be accomplished in the same manner. Assemble the complete seal box at the convenience of the work bench and install.

SLEEVES



Shaft sleeves, machined to close tolerances are optionally available in either bronze, 316 stainless steel, or monel.

SHAFTS



Precision machined shafts of stainless steel, monel and other alloys are available for difficult application.

THIS PAGE LEFT INTENTIONALLY BLANK

AURORA® MODEL 661A PUMP

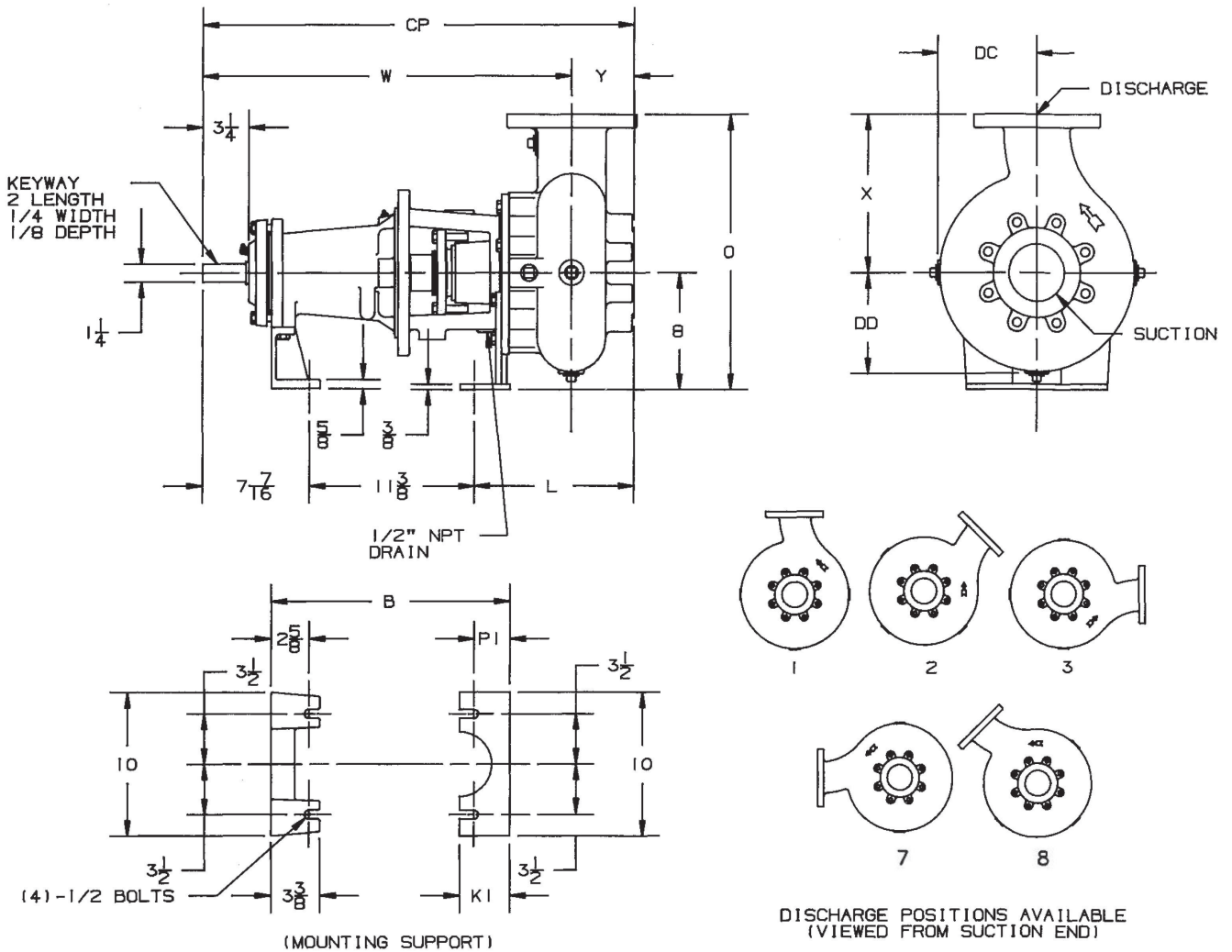
3" & 4" PUMPS

Section **660** Page **201**

Date **September 2017**

Supersedes Section 660 Page 201

Dated November 1988

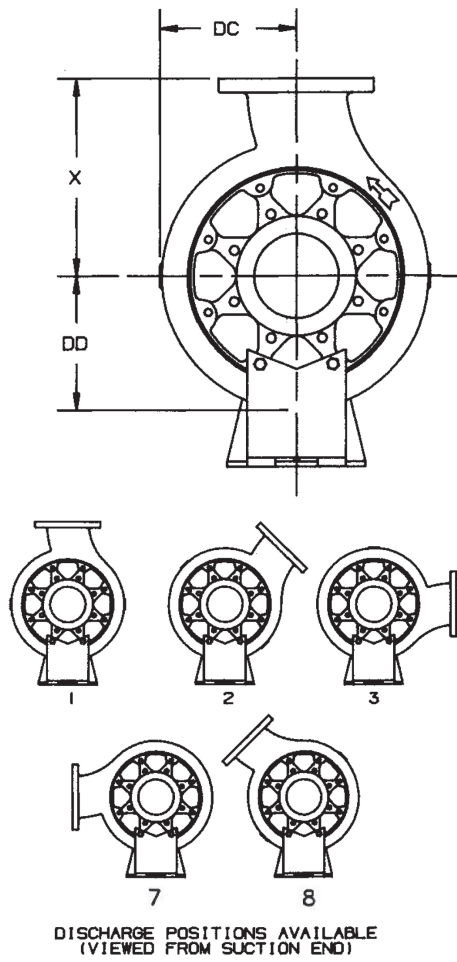
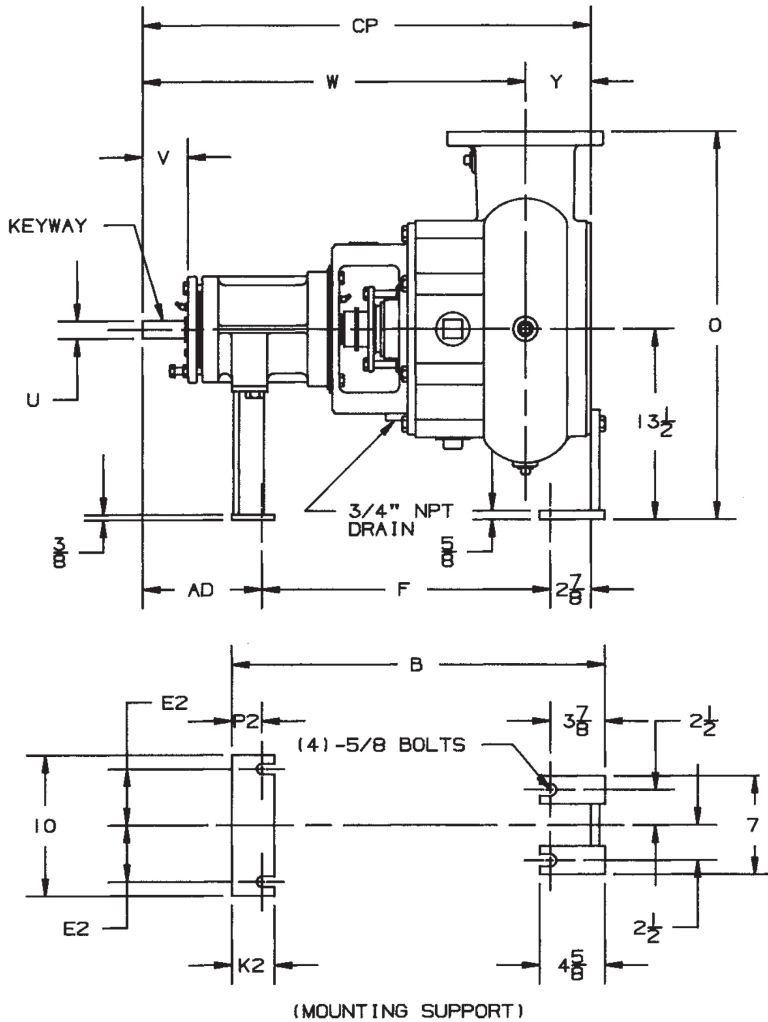


DISCHARGE POSITIONS AVAILABLE
(VIEWED FROM SUCTION END)

DISCH SUCT CASE BORE	POWER FRAME	B	L	O	PI	W	X	Y	CP	DC	DD
3x3x9	3C	16-1/2	9-13/16	18	2-1/2	25-1/2	10	3-1/8	28-5/8	6-3/4	6-3/4
3x3x12	3C	16-3/8	9-15/16	21	2-3/8	25-5/8	13	3-1/8	28-3/4	8-3/8	8-3/8
4x4x9	3C	16-1/2	11-1/16	19	2-1/2	26-1/2	11	3-3/8	29-7/8	7-1/4	7-1/4
4x4x12	3C	16-3/8	11-3/16	21	2-3/8	26-5/8	13	3-3/8	30	8-7/8	8-7/8

NOTES:

1. All dimensions in inches.
2. Dimensions may vary $\pm 1/4$ ".
3. Not for construction purposes unless certified.
4. Two (2) 1/2" NPT connections 180° apart, on the stuffing box for lubrication purposes, are furnished as standard.
5. Discharge position 1 is furnished as standard unless specified.
6. Suction and discharge flanges are American Standard 125 Lbs.
7. Check discharge position, casing dimensions which exceed 8" may require pads for the pump and/or motor.



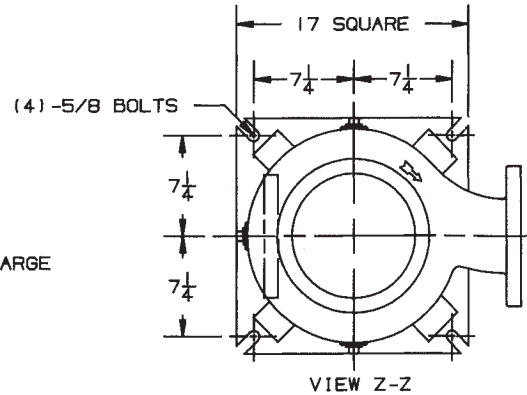
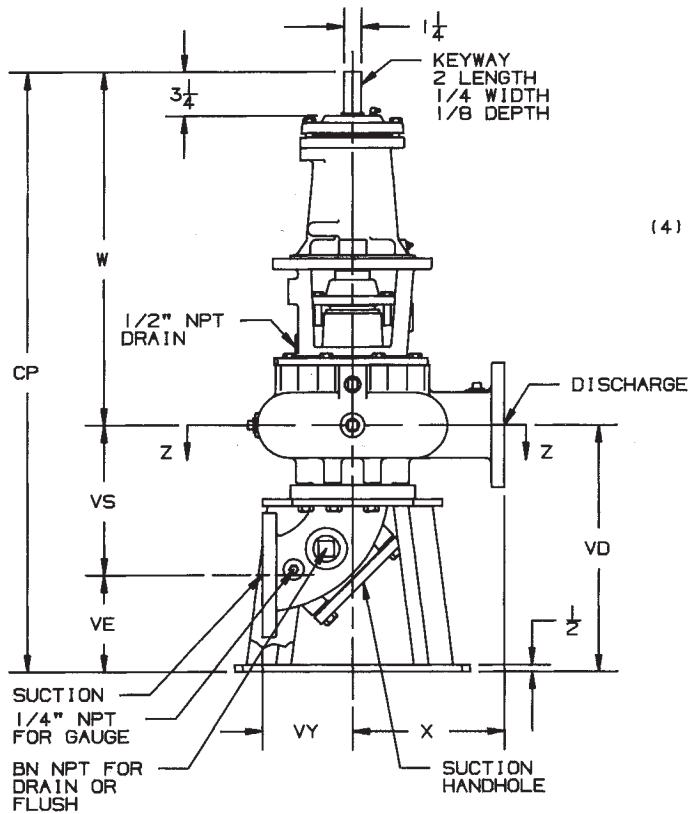
DISCH SUCT CASE BORE	POWER FRAME	B	E2	F	K2	O	P2	W	X	Y	AD	CP	DC	DD
6x6x12	4C	26-1/2	4	20-1/2	3	27-1/2	2-1/8	27-1/8	14	4-5/8	8-3/8	31-3/4	9-7/8	9-7/8
6x6x12	5E	32-3/4	3-3/4	26-1/8	4	27-1/2	2-3/4	38-1/8	14	4-5/8	13-3/4	42-3/4	9-7/8	9-7/8
6x6x15	5E	32-3/4	3-3/4	26-1/8	4	29-1/2	2-3/4	38-1/8	16	4-5/8	13-3/4	42-3/4	11-1/16	11-1/16

NOTES:

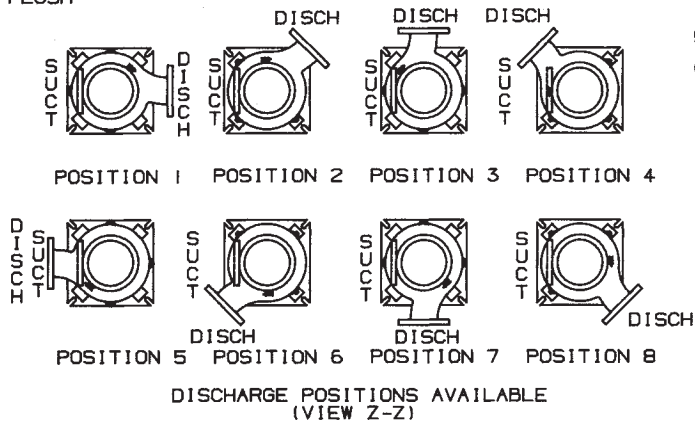
1. All dimensions in inches.
2. Dimensions may vary $\pm 1/4"$.
3. Not for construction purposes unless certified.
4. Two (2) 1/2" NPT connections 180° apart, on the stuffing box for lubrication purposes, are furnished as standard on packed pumps
Alemite fitting is provided in one tap and the remaining tap is plugged.
5. Discharge position I is furnished as standard unless specified.
6. Suction and discharge flanges are American Standard 125 Lbs.

AURORA® MODEL 662A PUMP

3" & 4" PUMPS

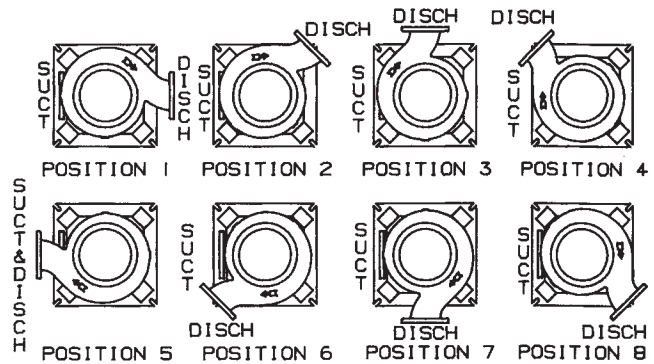
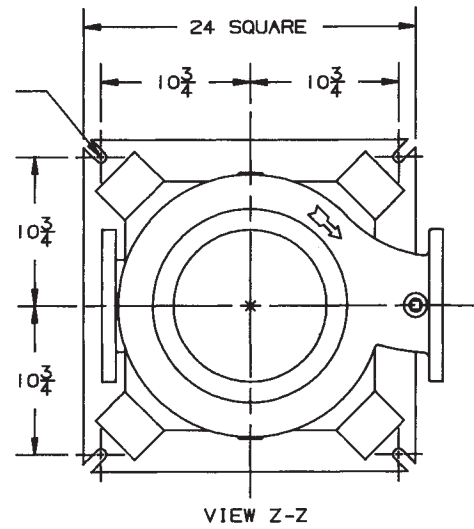
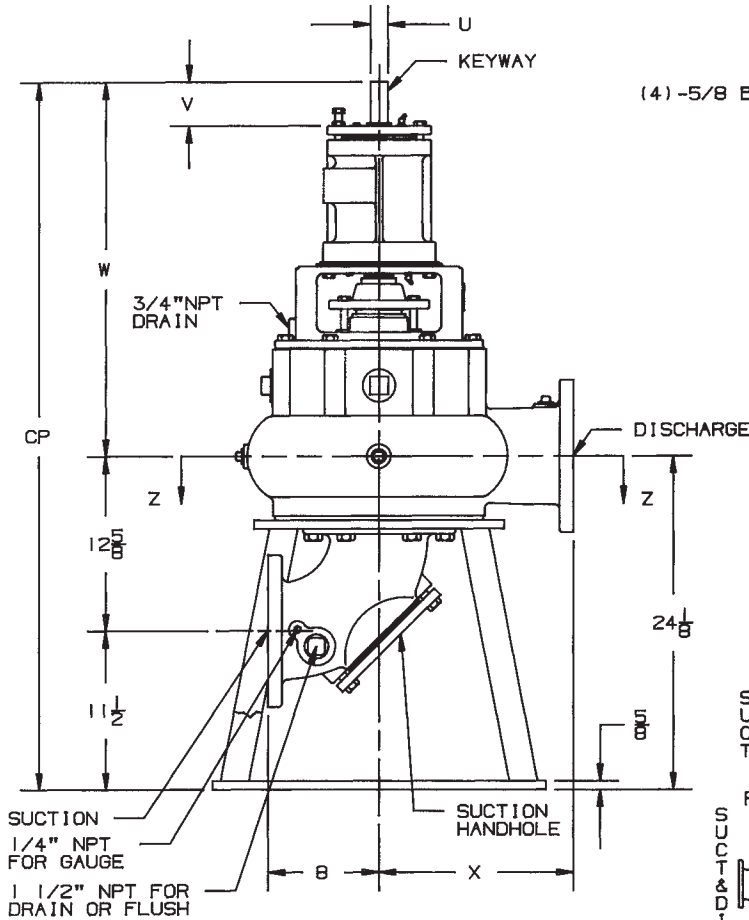


- NOTES:**
1. ALL DIMENSIONS IN INCHES.
 2. DIMENSIONS MAY VARY $\pm 1/4"$.
 3. NOT FOR CONSTRUCTION PURPOSES UNLESS CERTIFIED.
 4. TWO (2) 1/2" NPT CONNECTIONS 180° APART, ON THE STUFFING BOX FOR LUBRICATION PURPOSES ARE FURNISHED AS STANDARD. ON PACKED PUMPS AN ALEMITE FITTING IS PROVIDED IN ONE TAP AND THE REMAINING TAP IS PLUGGED.
 5. DISCHARGE POSITION 1 IS FURNISHED AS STANDARD UNLESS SPECIFIED.
 6. SUCTION AND DISCHARGE FLANGES ARE AMERICAN STANDARD 125 LBS.



NOTE:
PUMP SIZES 3x3x9 AND 3x3x12 DISCHARGE POSITIONS AVAILABLE ONLY IN 1, 3, 5, AND 7.

DISCH SUCTION CASE BORE	POWER FRAME	BN	VY	W	X	CP	VD	VE	VS
3x3x9	3C	1	6 1/2	25 1/2	10	41 7/8	16 3/8	6 3/4	9 5/8
3x3x12	3C	1	6 1/2	25 5/8	13	42	16 3/8	6 3/4	9 5/8
4x4x9	3C	1 1/2	6 1/2	26 1/2	11	43 3/8	16 7/8	6 15/16	9 15/16
4x4x12	3C	1 1/2	6 1/2	26 5/8	13	43 1/2	16 7/8	6 15/16	9 15/16



DISCHARGE POSITIONS AVAILABLE (VIEW Z-Z)

- NOTES:
1. ALL DIMENSIONS IN INCHES.
 2. DIMENSIONS MAY VARY $\pm 1/4"$.
 3. NOT FOR CONSTRUCTION PURPOSES UNLESS CERTIFIED.
 4. TWO (2) $1/2"$ NPT CONNECTIONS 180° APART, ON THE STUFFING BOX FOR LUBRICATION PURPOSES ARE FURNISHED AS STANDARD. ON PACKED PUMPS AN ALEMITE FITTING IS PROVIDED IN ONE TAP AND THE REMAINING TAP IS PLUGGED.
 5. DISCHARGE POSITION 1 IS FURNISHED AS STANDARD UNLESS SPECIFIED.
 6. SUCTION AND DISCHARGE FLANGES ARE AMERICAN STANDARD 125 LBS.

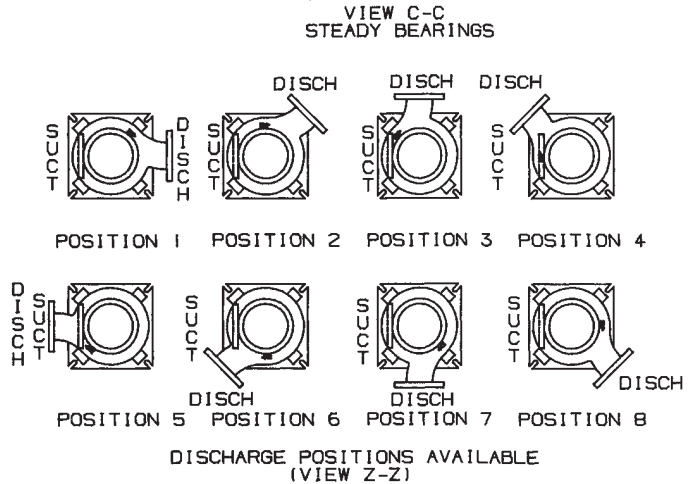
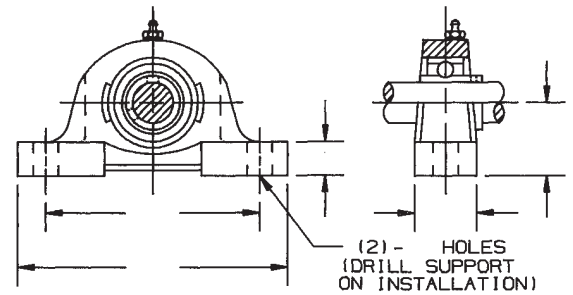
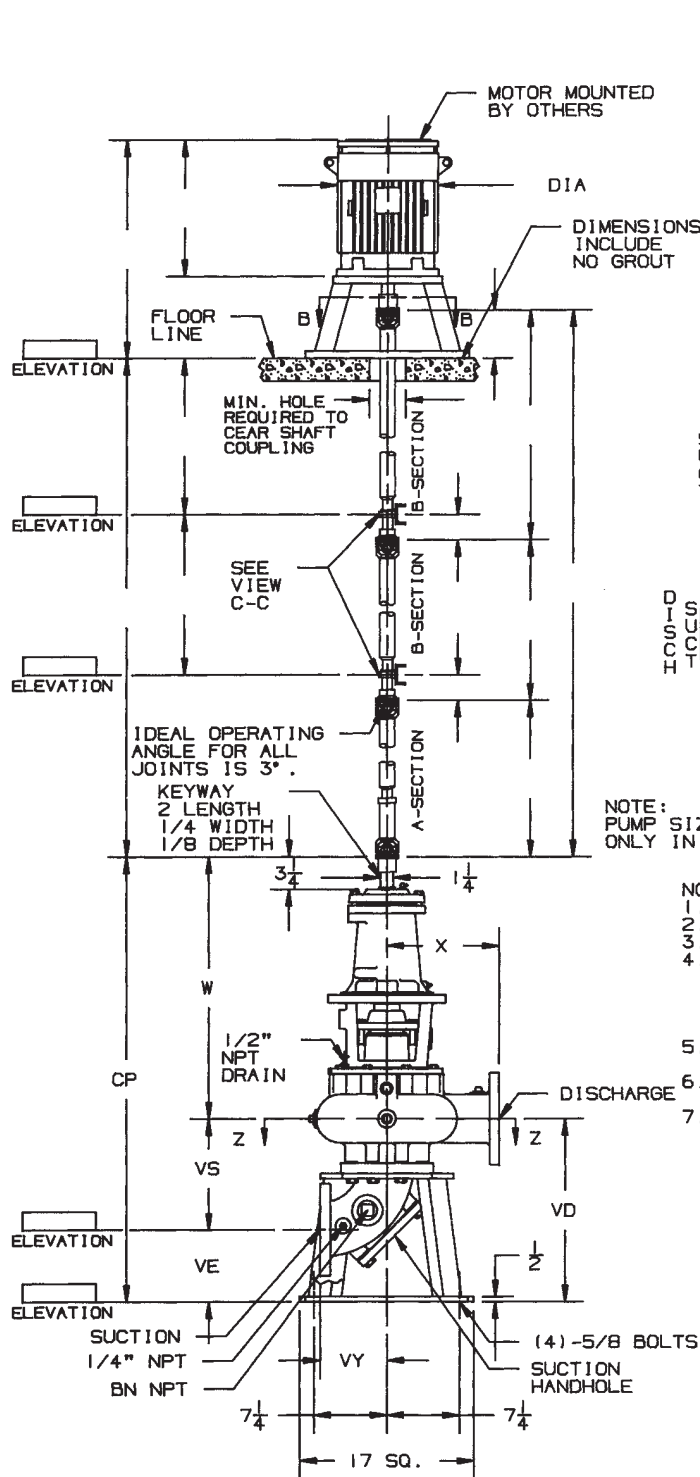
POWER FRAME	U	V	KEYWAY		
			LENGTH	WIDTH	DEPTH
4C	1 1/4	3 3/16	2	1/4	1/8
5E	2 3/8	6 3/8	4	5/8	5/16

DISCH SUCT CASE BORE	POWER FRAME	W	X	CP
6x6x12	4C	27 1/8	14	51 1/4
6x6x12	5E	38 1/8	14	62 1/4
6x6x15	5E	38 1/8	16	62 1/4

3" & 4" PUMPS
FLEXIBLE SHAFT

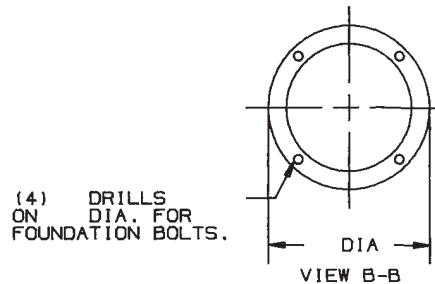
Date **January 2018**

Supersedes Section 660 Page 205
Dated September 2017

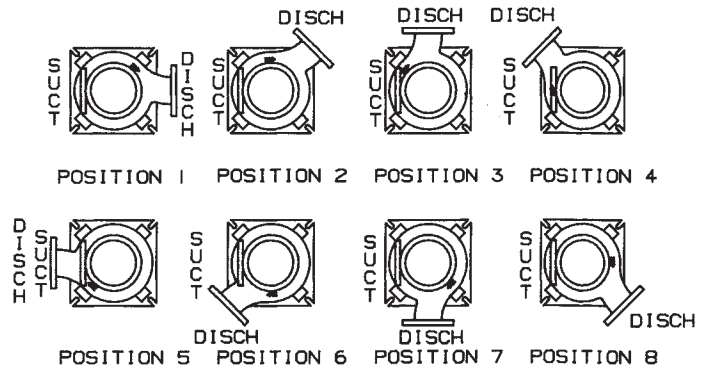
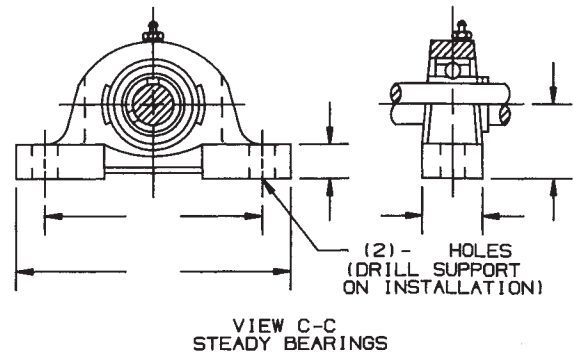
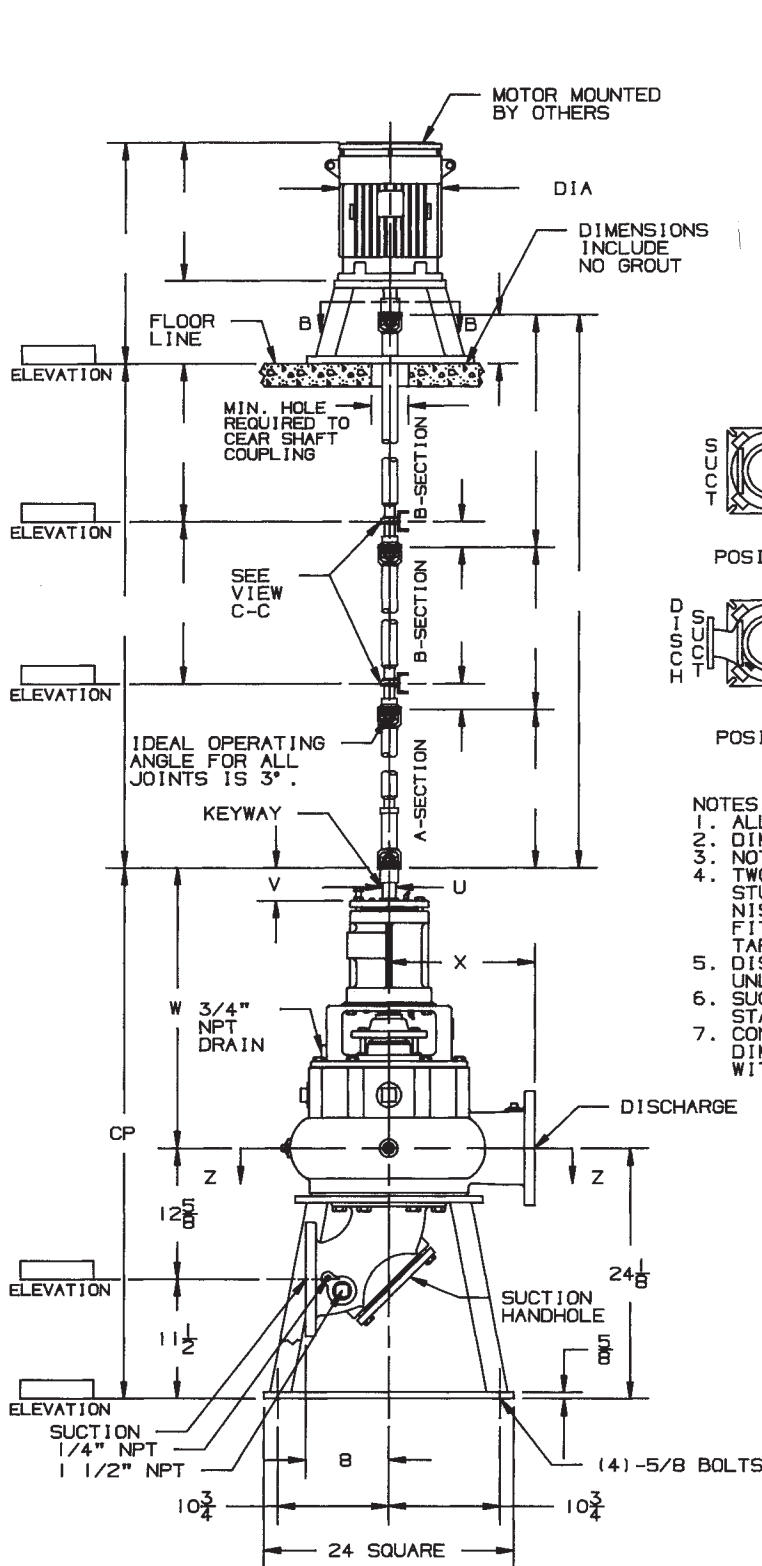


NOTE: PUMP SIZES 3x3x9 AND 3x3x12 DISCHARGE POSITIONS AVAILABLE ONLY IN 1, 3, 5, AND 7.

- NOTES:
1. ALL DIMENSIONS IN INCHES.
 2. DIMENSIONS MAY VARY ± 1/2".
 3. NOT FOR CONSTRUCTION PURPOSES UNLESS CERTIFIED.
 4. TWO (2) 1/2" NPT CONNECTIONS 180° APART, ON THE STUFFING BOX FOR LUBRICATION PURPOSES ARE FURNISHED AS STANDARD. ON PACKED PUMPS AN ALEMITE FITTING IS PROVIDED IN ONE TAP AND THE REMAINING TAP IS PLUGGED.
 5. DISCHARGE POSITION 1 IS FURNISHED AS STANDARD UNLESS SPECIFIED.
 6. SUCTION AND DISCHARGE FLANGES ARE AMERICAN STANDARD 125 LBS.
 7. CONDUIT BOX IS SHOWN IS APPROXIMATE LOCATION. DIMENSIONS ARE NOT SPECIFIED AS THEY MAY VARY WITH EACH MOTOR MANUFACTURER.

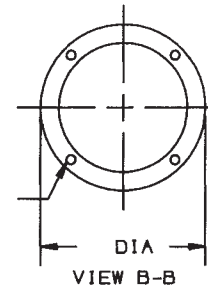


DISCH	SUCT	CASE	BORE	POWER	FRAME	BN	VY	W	X	CP	VD	VE	VS
3x	3x	9	3C	1	6 1/2	25 1/2	10	41 7/8	16 3/8	6 3/4	9 5/8		
3x	3x	12	3C	1	6 1/2	25 5/8	13	42	16 3/8	6 3/4	9 5/8		
4x	4x	9	3C	1 1/2	6 1/2	26 1/2	11	43 3/8	16 7/8	6 15/16	9 15/16		
4x	4x	12	3C	1 1/2	6 1/2	26 5/8	13	43 1/2	16 7/8	6 15/16	9 15/16		



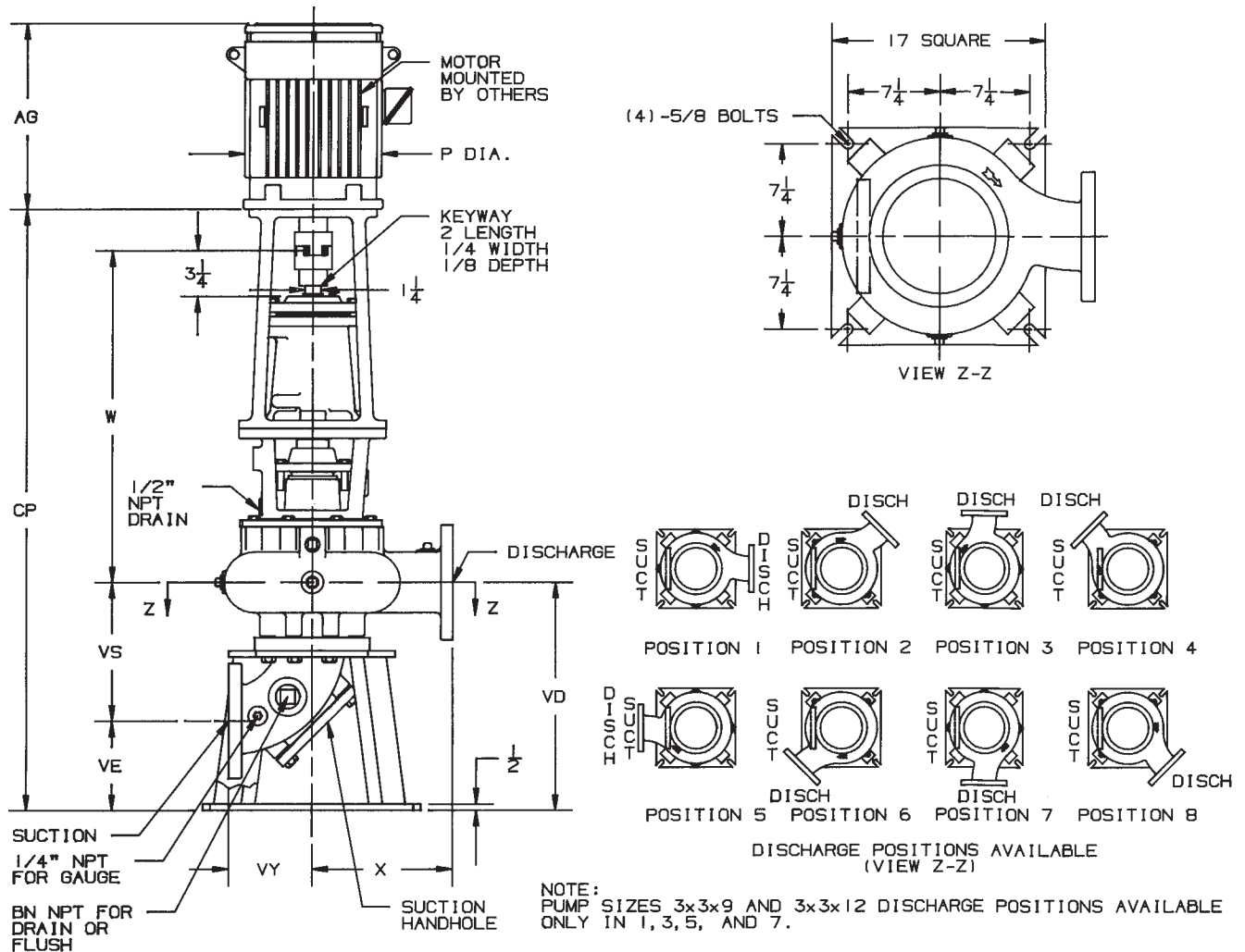
DISCHARGE POSITIONS AVAILABLE (VIEW Z-Z)

- NOTES:
1. ALL DIMENSIONS IN INCHES.
 2. DIMENSIONS MAY VARY $\pm 1/2"$.
 3. NOT FOR CONSTRUCTION PURPOSES UNLESS CERTIFIED.
 4. TWO (2) 1/2" NPT CONNECTIONS 180° APART, ON THE STUFFING BOX FOR LUBRICATION PURPOSES ARE FURNISHED AS STANDARD. ON PACKED PUMPS AN ALEMITE FITTING IS PROVIDED IN ONE TAP AND THE REMAINING TAP IS PLUGGED.
 5. DISCHARGE POSITION 1 IS FURNISHED AS STANDARD UNLESS SPECIFIED.
 6. SUCTION AND DISCHARGE FLANGES ARE AMERICAN STANDARD 125 LBS.
 7. CONDUIT BOX IS SHOWN IS APPROXIMATE LOCATION. DIMENSIONS ARE NOT SPECIFIED AS THEY MAY VARY WITH EACH MOTOR MANUFACTURER.



POWER FRAME	U	V	KEYWAY		
			LENGTH	WIDTH	DEPTH
4C	1 1/4	3 3/16	2	1/4	1/8
5E	2 3/8	6 3/8	4	5/8	5/16

DISCH SUCT CASE BORE	POWER FRAME	W	X	CP
6x6x12	4C	27 1/8	14	51 1/4
6x6x12	5E	38 1/8	14	62 1/4
6x6x15	5E	38 1/8	16	62 1/4



- NOTES:**
1. ALL DIMENSIONS IN INCHES.
 2. DIMENSIONS MAY VARY $\pm 1/4"$.
 3. NOT FOR CONSTRUCTION PURPOSES UNLESS CERTIFIED.
 4. TWO (2) 1/2" NPT CONNECTIONS 180° APART, ON THE STUFFING BOX FOR LUBRICATION PURPOSES ARE FURNISHED AS STANDARD. ON PACKED PUMPS AN ALEMITE FITTING IS PROVIDED IN ONE TAP AND THE REMAINING TAP IS PLUGGED.
 5. DISCHARGE POSITION 1 IS FURNISHED AS STANDARD UNLESS SPECIFIED.
 6. SUCTION AND DISCHARGE FLANGES ARE AMERICAN STANDARD 125 LBS.
 7. HEIGHT (AG) AND DIAMETER (P) DIMENSIONS OF MOTOR WILL VARY BASED ON MAKE AND STYLE OF MOTOR. DIMENSIONS SHOWN REFLECT AURORA STANDARD MOTORS. SEE INDIVIDUAL MOTOR SUPPLIER DIMENSIONAL DATA SHEETS FOR YOUR APPLICATION. CONDUIT BOX IS SHOWN IN APPROXIMATE LOCATION. DIMENSIONS ARE NOT SPECIFIED AS THEY VARY WITH EACH MOTOR MANUFACTURER.

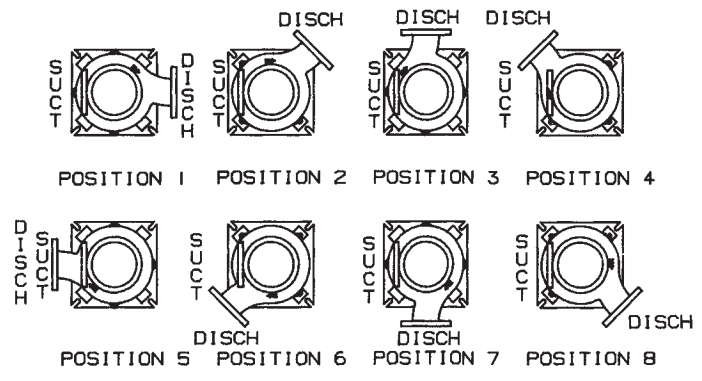
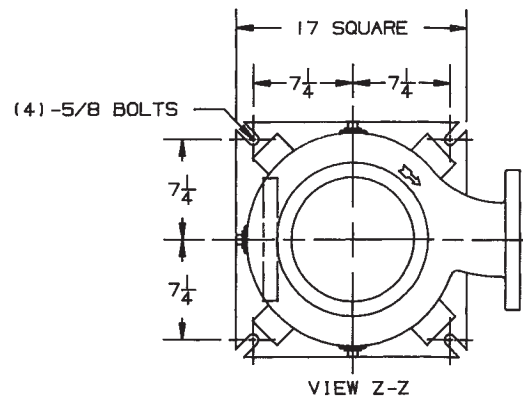
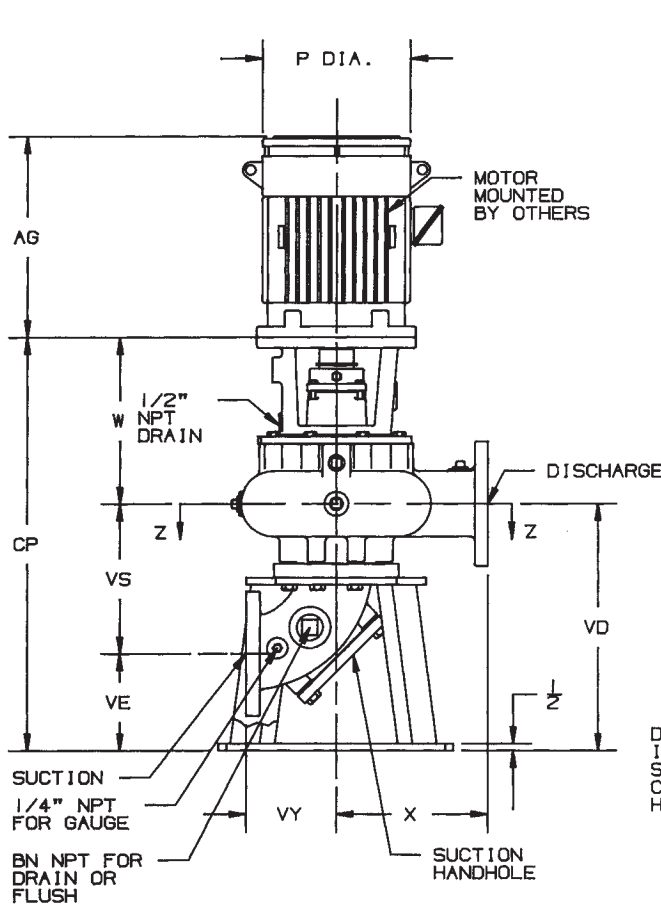
MOTOR FRAME	143HP TO 145HP	182HP TO 184HP	213HP TO 215HP	254HP TO 256HP	284HPH TO 286HPH	324HP TO 326HP	364HP TO 365HP	404HP TO 405HP
P APPROX.	8	10	11	13	16	18	21	22
AG APPROX.	11 12	13 14	16 18	20 21	22 23	25 26	25	28

DISCH SUCT COUPLER BORE	POWER FRAME	BN	VY	W	X	CP	VD	VE	VS
3x3x9	3C	1	6 1/2	25 1/2	10	45 1/2	16 3/8	6 3/4	9 5/8
3x3x12	3C	1	6 1/2	25 5/8	13	45 5/8	16 3/8	6 3/4	9 5/8
4x4x9	3C	1 1/2	6 1/2	26 1/2	11	47	16 7/8	6 15/16	9 15/16
4x4x12	3C	1 1/2	6 1/2	26 5/8	13	47 1/8	16 7/8	6 15/16	9 15/16

ADD 3/4" TO CP FOR PUMPS WITH MOTOR FRAMES 284HPH OR LARGER.

AURORA® MODEL 664A PUMP

3" & 4" PUMPS



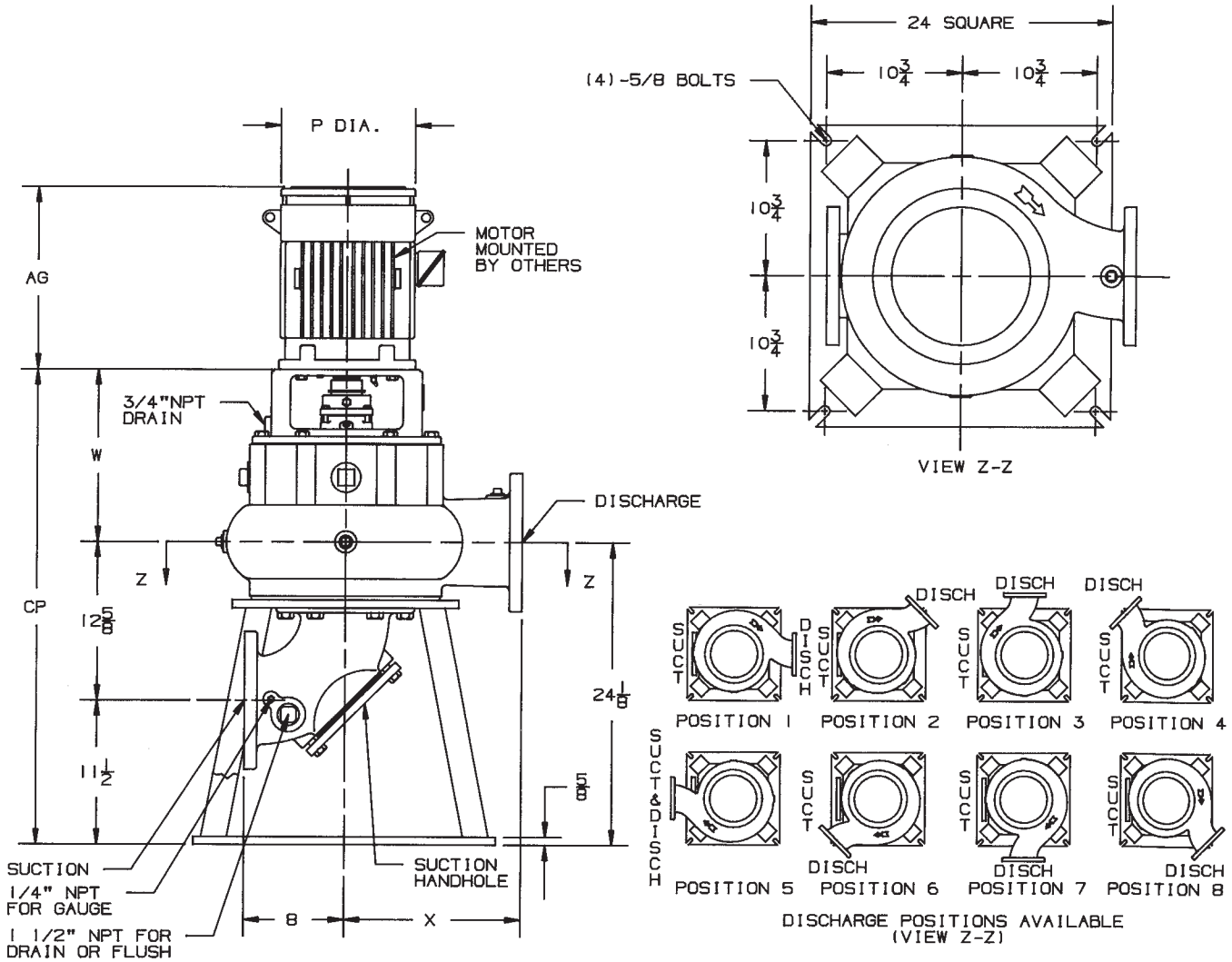
DISCHARGE POSITIONS AVAILABLE (VIEW Z-Z)

- NOTES:**
1. ALL DIMENSIONS IN INCHES.
 2. DIMENSIONS MAY VARY ± 1/4".
 3. NOT FOR CONSTRUCTION PURPOSES UNLESS CERTIFIED.
 4. TWO (2) 1/2" NPT CONNECTIONS 180° APART, ON THE STUFFING BOX FOR LUBRICATION PURPOSES ARE FURNISHED AS STANDARD.
 5. DISCHARGE POSITION 1 IS FURNISHED AS STANDARD UNLESS SPECIFIED.
 6. SUCTION AND DISCHARGE FLANGES ARE AMERICAN STANDARD 125 LBS.
 7. HEIGHT (AG) AND DIAMETER (P) DIMENSIONS OF MOTOR WILL VARY BASED ON MAKE AND STYLE OF MOTOR. DIMENSIONS SHOWN REFLECT AURORA STANDARD MOTORS. SEE INDIVIDUAL MOTOR SUPPLIER DIMENSIONAL DATA SHEETS FOR YOUR APPLICATION. CONDUIT BOX IS SHOWN IN APPROXIMATE LOCATION. DIMENSIONS ARE NOT SPECIFIED AS THEY VARY WITH EACH MOTOR MANUFACTURER.

NOTE: PUMP SIZES 3x3x9 AND 3x3x12 DISCHARGE POSITIONS AVAILABLE ONLY IN 1, 3, 5, AND 7.

MOTOR FRAME	143TCV TO 145TCV	182TCV TO 184TCV	213TCV TO 215TCV	254TCV TO 256TCV	284TCV TO 286TCV	324TCV TO 326TCV	364TCV TO 365TCV	404TCV TO 405TCV
P APPROX.	8	10	11	13	16	18	21	22
AG APPROX.	11 12	13 14	16 18	20 21	22 23	25 26	25	28

DISCH SUCT CASE BORE	BN	VY	W	X	CP	VD	VE	VS
3x3x9	1	6 1/2	15 13/16	10	32 3/16	16 3/8	6 3/4	9 5/8
3x3x12	1	6 1/2	15 15/16	13	32 5/16	16 3/8	6 3/4	9 5/8
4x4x9	1 1/2	6 1/2	16 13/16	11	33 11/16	16 7/8	6 15/16	9 15/16
4x4x12	1 1/2	6 1/2	16 15/16	13	33 13/16	16 7/8	6 15/16	9 15/16

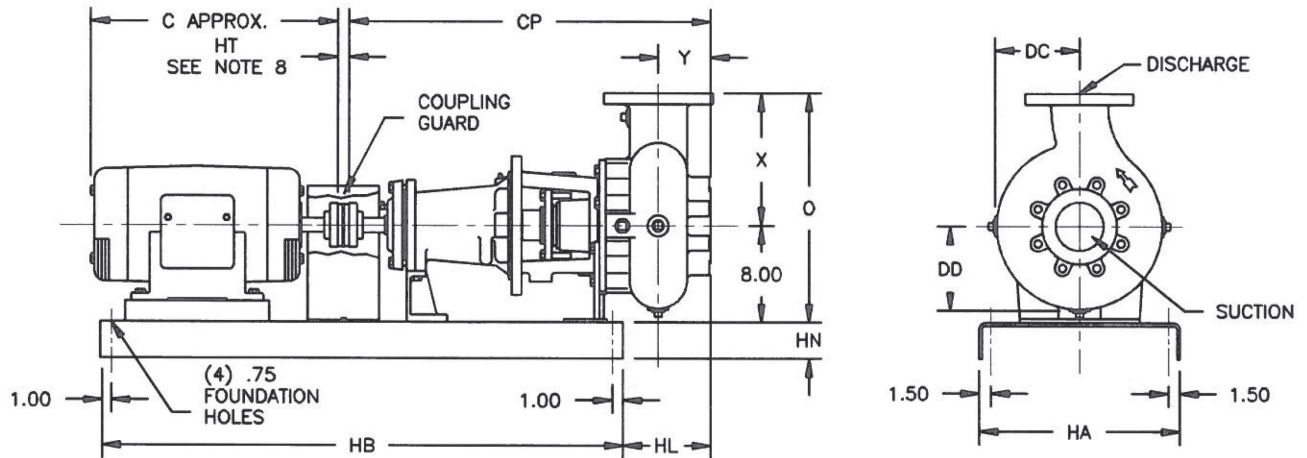


- NOTES:
1. ALL DIMENSIONS IN INCHES.
 2. DIMENSIONS MAY VARY ± 1/4"
 3. NOT FOR CONSTRUCTION PURPOSES UNLESS CERTIFIED.
 4. TWO (2) 1/2" NPT CONNECTIONS 180° APART, ON THE STUFFING BOX FOR LUBRICATION PURPOSES ARE FURNISHED AS STANDARD.
 5. DISCHARGE POSITION 1 IS FURNISHED AS STANDARD UNLESS SPECIFIED.
 6. SUCTION AND DISCHARGE FLANGES ARE AMERICAN STANDARD 125 LBS.
 7. HEIGHT (AG) AND DIAMETER (P) DIMENSIONS OF MOTOR WILL VARY BASED ON MAKE AND STYLE OF MOTOR. DIMENSIONS SHOWN REFLECT AURORA STANDARD MOTORS. SEE INDIVIDUAL MOTOR SUPPLIER DIMENSIONAL DATA SHEETS FOR YOUR APPLICATION. CONDUIT BOX IS SHOWN IN APPROXIMATE LOCATION. DIMENSIONS ARE NOT SPECIFIED AS THEY VARY WITH EACH MOTOR MANUFACTURER.

DISCH SUCTION CASE BORE MOTOR SHAFT EXT. TYPE	W	X	CP	MOTOR	143TCV	182TCV	213TCV	254TCV	284TCV	324TCV	364TCV	404TCV
				FRAME	TO	TO	TO	TO	TO	TO	TO	
6x6x12	17 9/16	14	41 11/16	P	145TCV	184TCV	215TCV	256TCV	286TCV	326TCV	365TCV	405TCV
6x6x12	20 11/16	14	44 13/16	APPROX.	8	10	11	13	16	18	21	22
6x6x15	20 11/16	16	44 13/16	AG	11	12	13	14	16	18	20	21
				APPROX.	11	12	13	14	16	18	20	21
					22	23	25	26	25	28		

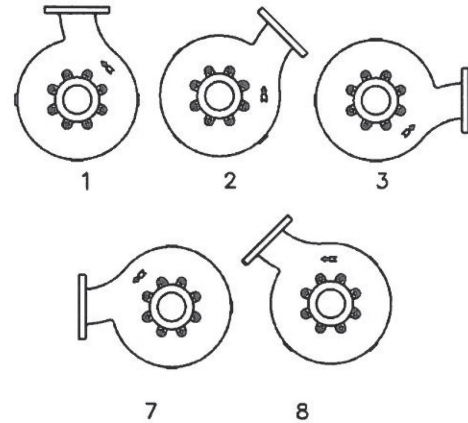
AURORA® MODEL 661A PUMP

3" & 4" PUMPS
FORMED STEEL BASE



NOTES:

1. ALL DIMENSIONS IN INCHES.
2. DIMENSIONS MAY VARY $\pm .25"$.
3. NOT FOR CONSTRUCTION PURPOSES UNLESS CERTIFIED.
4. TWO (2) 1/2" NPT CONNECTIONS 180° APART, ON THE STUFFING BOX FOR LUBRICATION PURPOSES ARE FURNISHED AS STANDARD. ON PACKED PUMPS AN ALEMITE FITTING IS PROVIDED IN ONE TAP AND THE REMAINING TAP IS PLUGGED.
5. DISCHARGE POSITION 1 IS FURNISHED AS STANDARD UNLESS SPECIFIED.
6. SUCTION AND DISCHARGE FLANGES ARE AMERICAN STANDARD 125 LBS.
7. CONDUIT BOX IS SHOWN IS APPROXIMATE LOCATION. DIMENSIONS ARE NOT SPECIFIED AS THEY MAY VARY WITH EACH MOTOR MANUFACTURER.
8. STANDARD COUPLING ILLUSTRATED. "HT" DIMENSION .13"-2.50". SPACER COUPLING "HT" DIMENSION IS 3.50"-9.00".
9. REFER TO PAGE 251.1 FOR STANDARD COUPLING BASE NUMBER SELECTION. REFER TO PAGE 251.2 FOR SPACER COUPLING BASE NUMBER SELECTION.

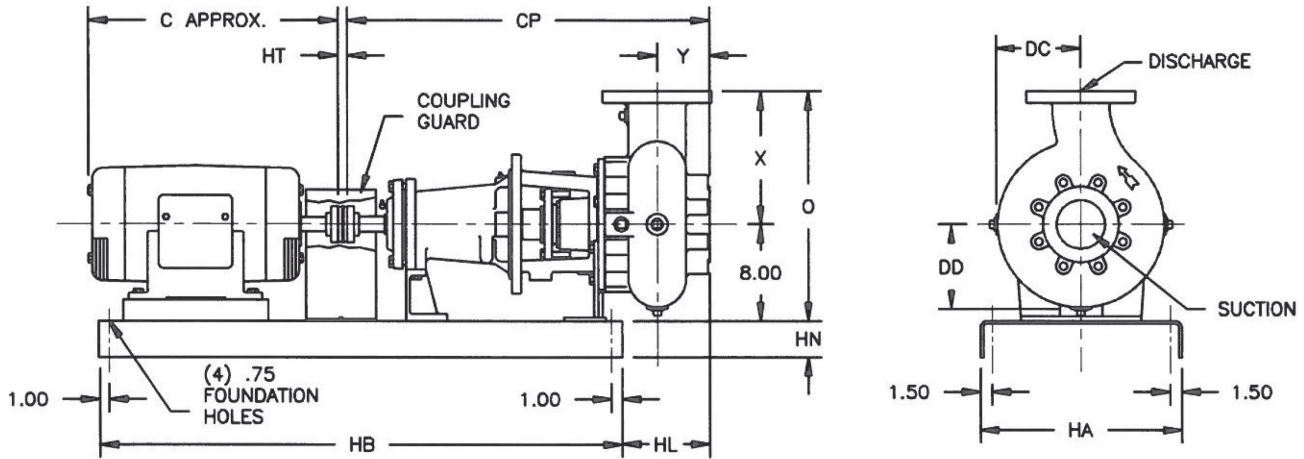


DISCHARGE POSITIONS AVAILABLE
(VIEWED FROM SUCTION END)

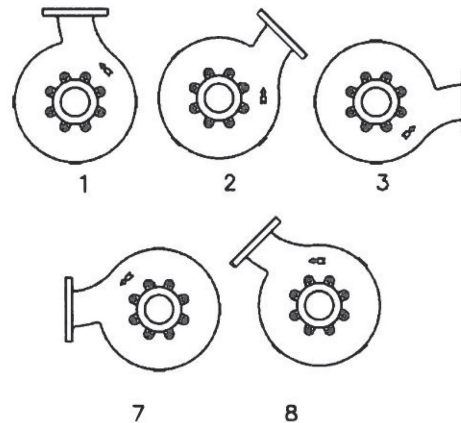
DISCH SUCT BORE CASE	FRAME POWER	HL	O	X	Y	CP	DC	DD
3x3x9	3C	7.00	18.00	10.00	3.13	28.63	6.75	6.75
3x3x12	3C	7.13	21.00	13.00	3.13	28.75	8.38	8.38
4x4x9	3C	8.25	19.00	11.00	3.38	29.88	7.25	7.25
4x4x12	3C	8.38	21.00	13.00	3.38	30.00	8.88	8.88

BASE	HA	HB	HN
1	15.00	38.00	3.38
2	15.00	44.00	3.38
3	18.00	44.00	4.00
4	18.00	48.00	4.00
5	18.00	54.00	4.00
6	18.00	60.00	4.00





- NOTES:
 1. ALL DIMENSIONS IN INCHES.
 2. DIMENSIONS MAY VARY ± .25".
 3. NOT FOR CONSTRUCTION PURPOSES UNLESS CERTIFIED.
 4. THIS PAGE IS FOR BASE DIMENSIONS FOR ALL OTHER DIMENSIONS REFER TO PAGE 251.



DISCHARGE POSITIONS AVAILABLE
(VIEWED FROM SUCTION END)

BASE	HA	HB	HN
1	15.00	38.00	3.38
2	15.00	44.00	3.38
3	18.00	44.00	4.00
4	18.00	48.00	4.00
5	18.00	54.00	4.00
6	18.00	60.00	4.00

DISCH SUCTION BORE CASE	FRAME POWER	FRAME	FRAME																						
			C	13	13	13	14	16	18	21	23	24	22	25	24	26	25	28	26	29	27	30	28	33	30
3x3x9	3C		1	1	1	1	1	1	1	3	3	4	4	4	4	4	4	4	5	5					
3x3x12	3C		1	1	1	1	1	1	3	3	4	4	4	4	4	4	4	5	5	5	5	5			
4x4x9	3C		1	1	1	1	1	1	3	3	4	4	4	4	4	4	4	5	5	5	5	5			
4x4x12	3C		1	1	1	1	1	1	3	3	4	4	4	4	4	4	4	5	5	5	5	5	5		

AURORA® MODEL 661A PUMP

3" & 4" PUMPS

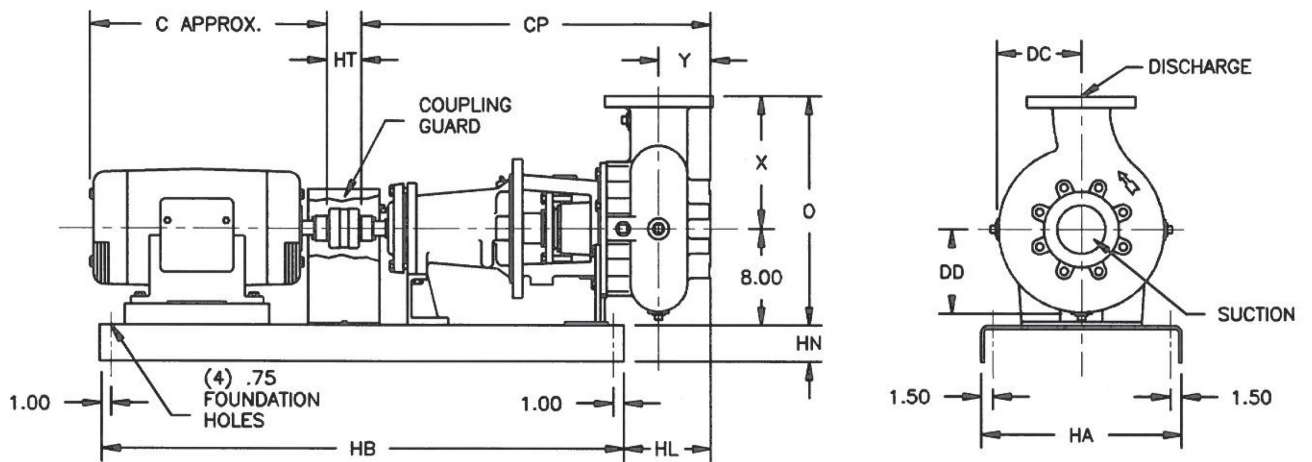
FORMED STEEL BASE

BASE SELECTIONS FOR STANDARD COUPLING

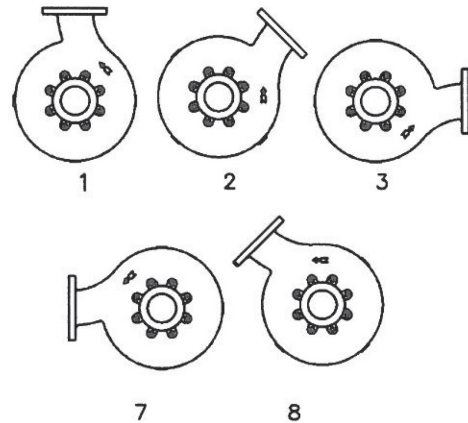
Date **September 2017**

Supersedes Section 660 Page 352

Dated November 1988



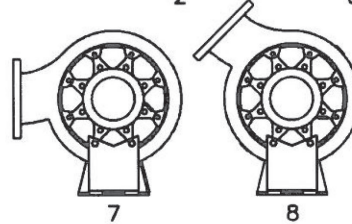
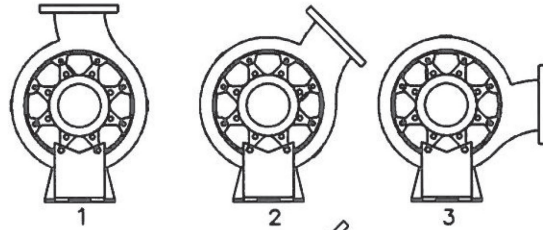
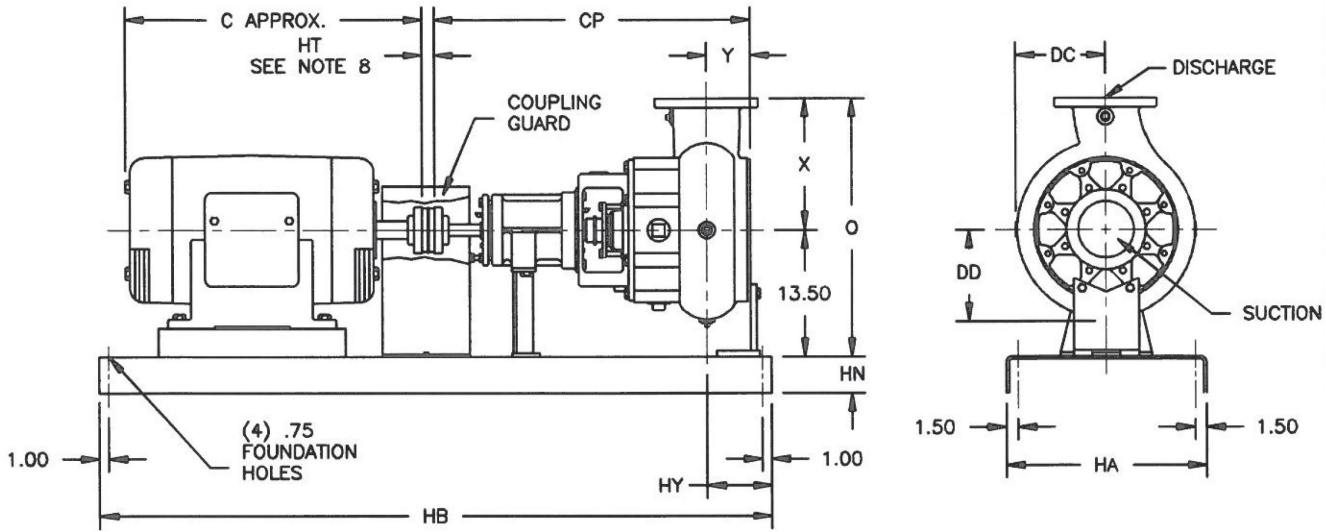
- NOTES:
1. ALL DIMENSIONS IN INCHES.
 2. DIMENSIONS MAY VARY $\pm .25"$.
 3. NOT FOR CONSTRUCTION PURPOSES UNLESS CERTIFIED.
 4. THIS PAGE IS FOR BASE DIMENSIONS FOR ALL OTHER DIMENSIONS REFER TO PAGE 251.



DISCHARGE POSITIONS AVAILABLE
(VIEWED FROM SUCTION END)

BASE	HA	HB	HN
1	15.00	38.00	3.38
2	15.00	44.00	3.38
3	18.00	44.00	4.00
4	18.00	48.00	4.00
5	18.00	54.00	4.00
6	18.00	60.00	4.00

DISCH SUCT BORE CASE	FRAME POWER	FRAME																							
		C	143T	145T	182T	184T	213T	215T	254T	256T	284T	284TS	286T	286TS	324T	324TS	326T	326TS	364T	364TS	365T	365TS	404T	404TS	
3x3x9	3C		2	2	2	2	2	2	4	4	5	5	5	5	5	5	6	6							
3x3x12	3C		2	2	2	2	2	4	4	5	5	5	5	5	5	6	6	6	6	6	6				
4x4x9	3C		2	2	2	2	2	4	4	5	5	5	5	5	5	6	6								
4x4x12	3C		2	2	2	2	2	4	4	5	5	5	5	5	5	6	6	6	6	6	6				



DISCHARGE POSITIONS AVAILABLE
(VIEWED FROM SUCTION END)

NOTES:

1. ALL DIMENSIONS IN INCHES.
2. DIMENSIONS MAY VARY ± .25".
3. NOT FOR CONSTRUCTION PURPOSES UNLESS CERTIFIED.
4. TWO (2) 1/2" NPT CONNECTIONS 180° APART, ON THE STUFFING BOX FOR LUBRICATION PURPOSES ARE FURNISHED AS STANDARD. ON PACKED PUMPS AN ALEMITE FITTING IS PROVIDED IN ONE TAP AND THE REMAINING TAP IS PLUGGED.
5. DISCHARGE POSITION 1 IS FURNISHED AS STANDARD UNLESS SPECIFIED.
6. SUCTION AND DISCHARGE FLANGES ARE AMERICAN STANDARD 125 LBS.
7. CONDUIT BOX IS SHOWN IS APPROXIMATE LOCATION. DIMENSIONS ARE NOT SPECIFIED AS THEY MAY VARY WITH EACH MOTOR MANUFACTURER.
8. STANDARD COUPLING ILLUSTRATED. "HT" DIMENSION .13"-2.50". SPACER COUPLING "HT" DIMENSION IS 3.50"-9.00".
9. REFER TO PAGE 252.1 FOR STANDARD COUPLING BASE NUMBER SELECTION. REFER TO PAGE 252.2 FOR SPACER COUPLING BASE NUMBER SELECTION.

BASE	HA	HB	HN
5	18.00	54.00	4.00
6	18.00	60.00	4.00
7	18.00	68.00	4.00
8	18.00	72.00	4.00
9	18.00	80.00	4.00

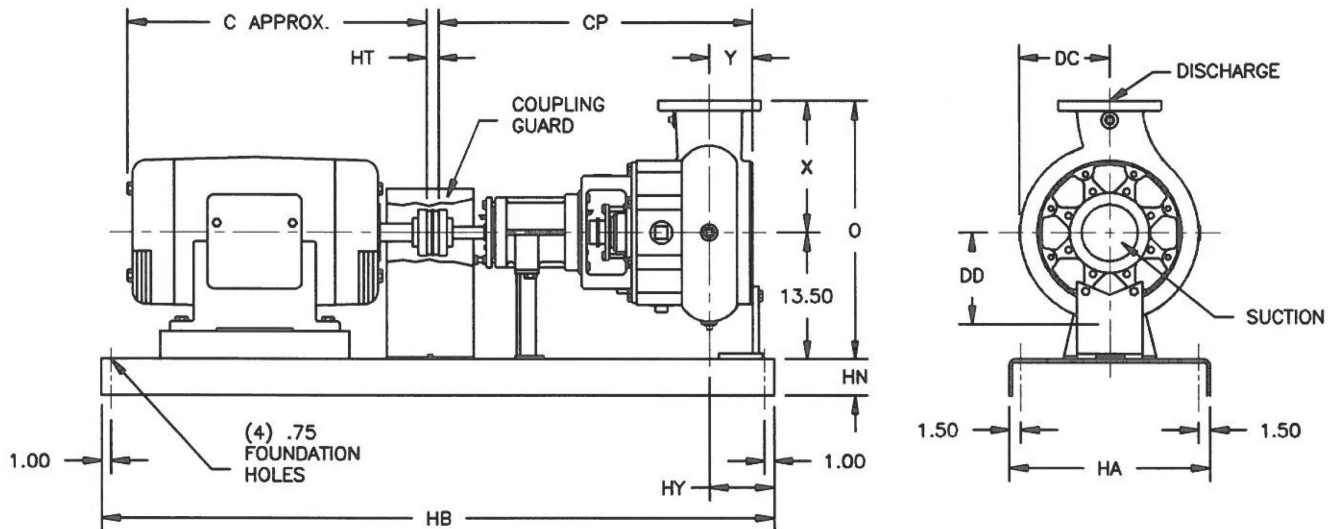
DISCH SUCT BORE CASE	FRAME POWER	O	X	Y	CP	DC	DD	HY
6x6x12	4C	27.50	14.00	4.63	31.75	9.88	9.88	5.25
6x6x12	5F	27.50	14.00	4.63	42.75	9.88	9.88	5.25
6x6x15	5E	29.50	16.00	4.63	42.75	11.06	11.06	5.25

AURORA® MODEL 661A PUMP

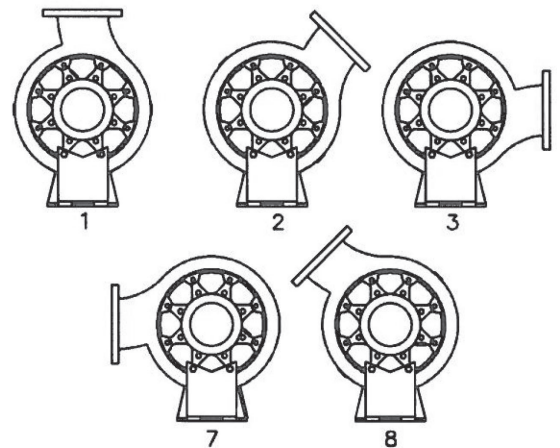
6" PUMPS

FORMED STEEL BASE

BASE SELECTIONS FOR STANDARD COUPLING



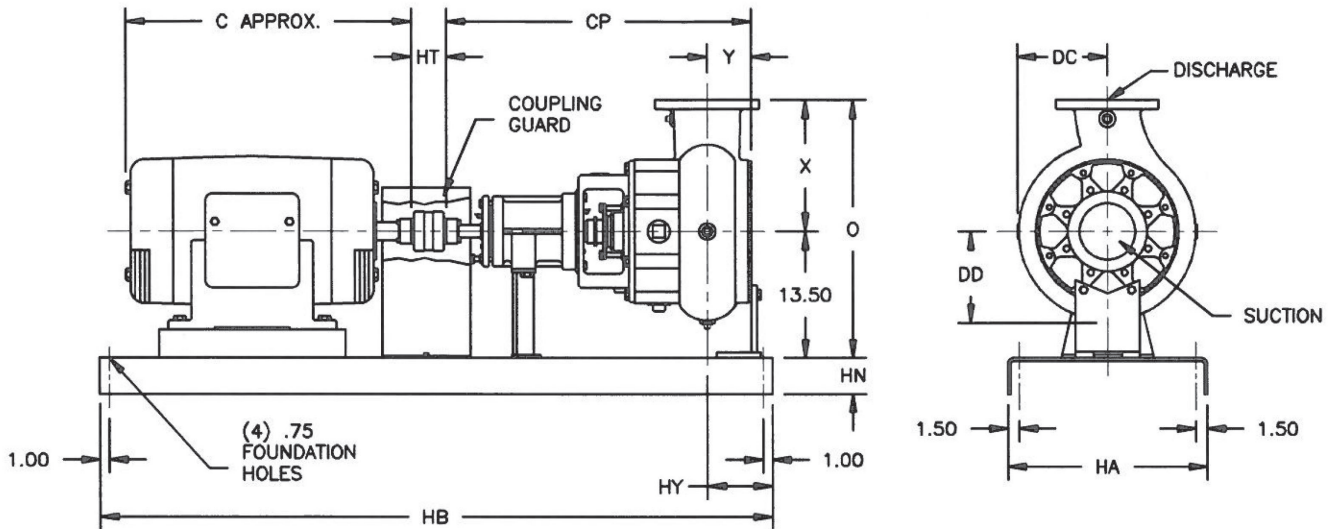
- NOTES:
 1. ALL DIMENSIONS IN INCHES.
 2. DIMENSIONS MAY VARY ± .25".
 3. NOT FOR CONSTRUCTION PURPOSES UNLESS CERTIFIED.
 4. THIS PAGE IS FOR BASE DIMENSIONS FOR ALL OTHER DIMENSIONS REFER TO PAGE 252.



DISCHARGE POSITIONS AVAILABLE
(VIEWED FROM SUCTION END)

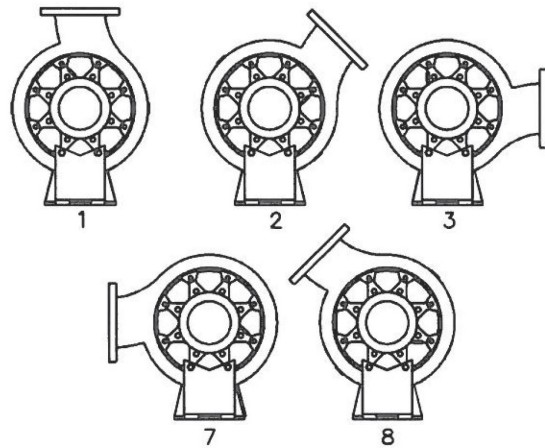
BASE	HA	HB	HN
5	18.00	54.00	4.00
6	18.00	60.00	4.00
7	18.00	68.00	4.00
8	18.00	72.00	4.00
9	18.00	80.00	4.00

DISCH SUCT BORE CASE	FRAME POWER	FRAME	254T	256T	284T	284TS	286T	286TS	324T	324TS	326T	326TS	364T	364TS	365T	365TS	404T	404TS	405T	405TS	444T	444TS	445T	445TS	
		C	21	23	24	22	25	24	26	25	28	26	29	27	30	28	33	30	34	31	38	34	40	36	
6x6x12	4C		5	5	6	6	6	6	6	6	6	6	7	7	7	7									
6x6x12	5E		6	6	6	6	6	6	8	8	8	8	9	9	9	9									
6x6x15	5E		7	7	7	7	7	7	8	8	8	8	8	8	8	8									



NOTES:

1. ALL DIMENSIONS IN INCHES.
2. DIMENSIONS MAY VARY ± .25".
3. NOT FOR CONSTRUCTION PURPOSES UNLESS CERTIFIED.
4. THIS PAGE IS FOR BASE DIMENSIONS FOR ALL OTHER DIMENSIONS REFER TO PAGE 252.



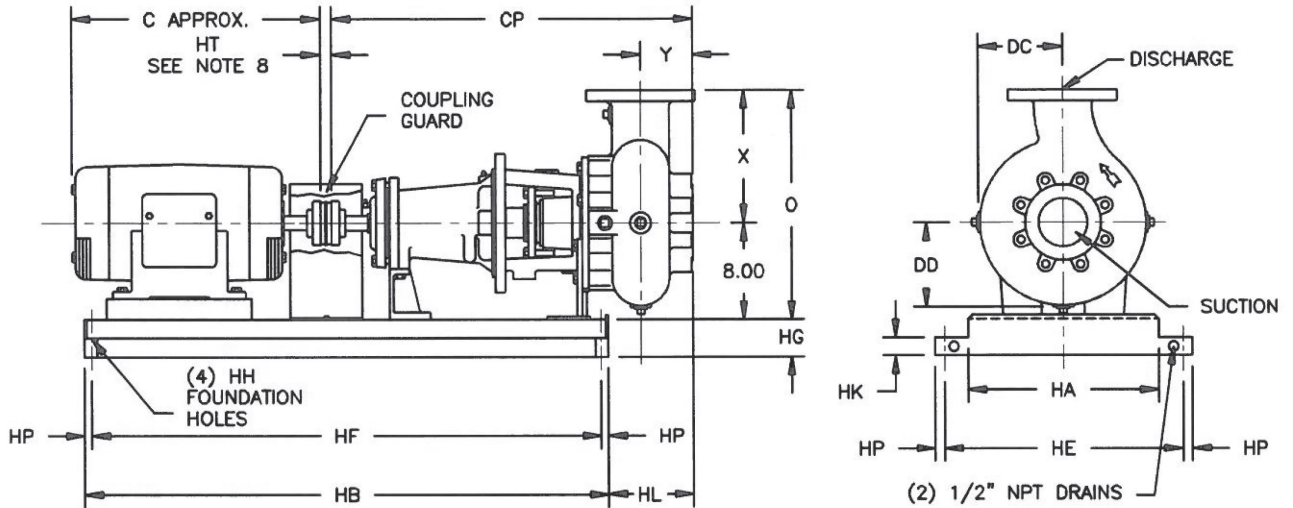
DISCHARGE POSITIONS AVAILABLE
(VIEWED FROM SUCTION END)

BASE	HA	HB	HN
5	18.00	54.00	4.00
6	18.00	60.00	4.00
7	18.00	68.00	4.00
8	18.00	72.00	4.00
9	18.00	80.00	4.00

DISCH SUCTION BORE CASE	FRAME POWER	FRAME																					
		C	254T	256T	284T	284TS	286T	286TS	324T	324TS	326T	326TS	364T	364TS	365T	365TS	404T	404TS	405T	405TS	444T	444TS	445T
6x6x12	4C	21	23	24	22	25	24	26	25	28	26	29	27	30	28	33	30	34	31	38	34	40	36
6x6x12	5C	28	28	28	28	28	28	28	28	28	28	28	28	28	28	28	28	28	28	28	28	28	28
6x6x12	5C	28	28	28	28	28	28	28	28	28	28	28	28	28	28	28	28	28	28	28	28	28	28

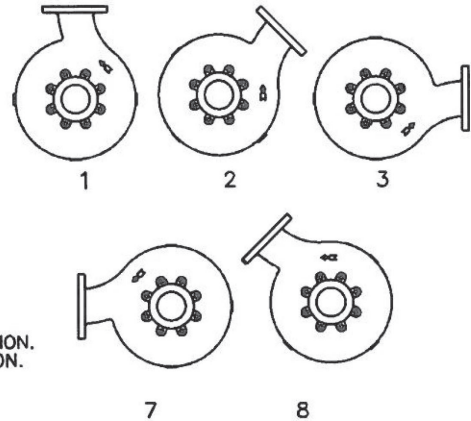
AURORA® MODEL 661A PUMP

3" & 4" PUMPS
DRIP RIM STEEL BASE



NOTES:

1. ALL DIMENSIONS IN INCHES.
2. DIMENSIONS MAY VARY ± .25".
3. NOT FOR CONSTRUCTION PURPOSES UNLESS CERTIFIED.
4. TWO (2) 1/2" NPT CONNECTIONS 180° APART, ON THE STUFFING BOX FOR LUBRICATION PURPOSES ARE FURNISHED AS STANDARD. ON PACKED PUMPS AN ALEMITE FITTING IS PROVIDED IN ONE TAP AND THE REMAINING TAP IS PLUGGED.
5. DISCHARGE POSITION 1 IS FURNISHED AS STANDARD UNLESS SPECIFIED.
6. SUCTION AND DISCHARGE FLANGES ARE AMERICAN STANDARD 125 LBS.
7. CONDUIT BOX IS SHOWN IS APPROXIMATE LOCATION. DIMENSIONS ARE NOT SPECIFIED AS THEY MAY VARY WITH EACH MOTOR MANUFACTURER.
8. STANDARD COUPLING ILLUSTRATED, "HT" DIMENSION .13"-2.50". SPACER COUPLING "HT" DIMENSION IS 3.50"-9.00".
9. REFER TO PAGE 253.1 FOR STANDARD COUPLING BASE NUMBER SELECTION. REFER TO PAGE 253.2 FOR SPACER COUPLING BASE NUMBER SELECTION.

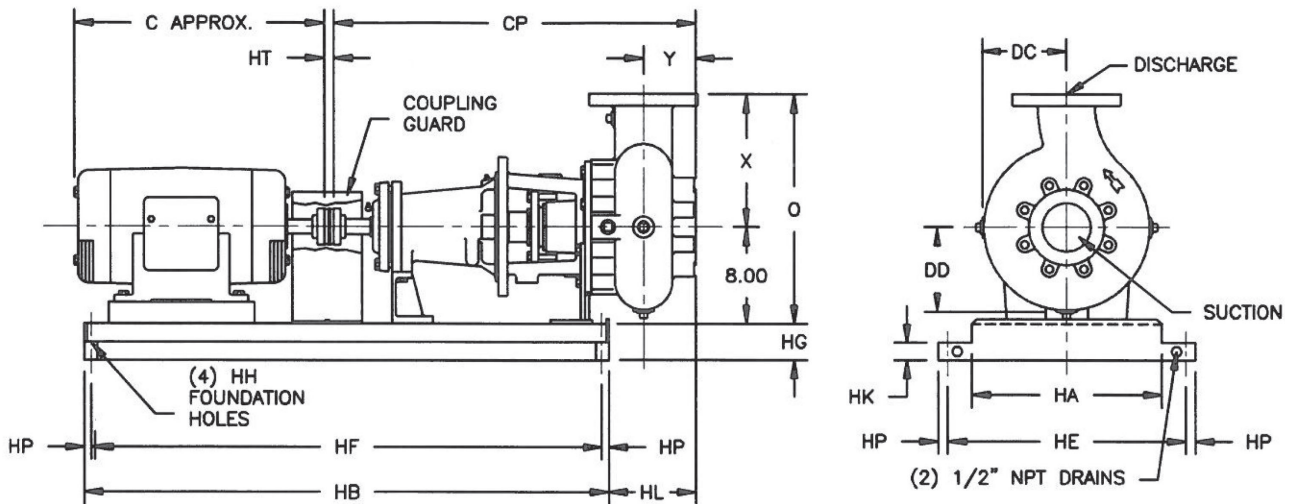


DISCHARGE POSITIONS AVAILABLE
(VIEWED FROM SUCTION END)

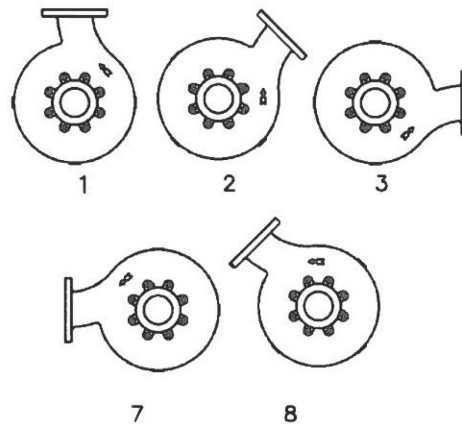
BASE	SIZE	HA	HB	HE	HF	HG	HH	HK	HP
5	11x36	11.00	36.50	15.88	35.13	3.00	.88	1.50	.69
6	11x42	11.00	42.50	15.88	41.13	3.00	.88	1.50	.69
8	14x42	14.00	42.50	19.00	41.00	3.00	1.00	1.50	.75
9	14x48	14.00	48.50	19.00	47.00	3.00	1.00	1.50	.75
10	14x56	14.00	56.50	19.00	55.00	3.00	1.00	1.50	.75
11	18x46	18.00	46.50	25.13	44.88	4.00	1.13	2.00	.81
12	18x54	18.00	54.50	25.13	52.88	4.00	1.13	2.00	.81
13	18x64	18.00	64.50	25.13	62.88	4.00	1.13	2.00	.81
14	18x72	18.00	72.50	25.13	70.88	4.00	1.13	2.00	.81
15	22x54	22.00	54.50	29.13	52.88	4.50	1.13	2.00	.81

DISCH	SUCT	BORE	CASE	FRAME	POWER	HL	O	X	Y	CP	DC	DD
3x3	3x9			3C		6.50	18.00	10.00	3.13	28.63	6.75	6.75
3x3	3x12			3C		6.63	21.00	13.00	3.13	28.75	8.38	8.38
4x4	4x9			3C		7.75	19.00	11.00	3.38	29.88	7.25	7.25
4x4	4x12			3C		7.88	21.00	13.00	3.38	30.00	8.88	8.88





- NOTES:
 1. ALL DIMENSIONS IN INCHES.
 2. DIMENSIONS MAY VARY ± .25\"/>



DISCHARGE POSITIONS AVAILABLE
(VIEWED FROM SUCTION END)

BASE	SIZE	HA	HB	HE	HF	HG	HH	HK	HP
5	11x36	11.00	36.50	15.88	35.13	3.00	.88	1.50	.69
6	11x42	11.00	42.50	15.88	41.13	3.00	.88	1.50	.69
8	14x42	14.00	42.50	19.00	41.00	3.00	1.00	1.50	.75
9	14x48	14.00	48.50	19.00	47.00	3.00	1.00	1.50	.75
10	14x56	14.00	56.50	19.00	55.00	3.00	1.00	1.50	.75
11	18x46	18.00	46.50	25.13	44.88	4.00	1.13	2.00	.81
12	18x54	18.00	54.50	25.13	52.88	4.00	1.13	2.00	.81
13	18x64	18.00	64.50	25.13	62.88	4.00	1.13	2.00	.81
14	18x72	18.00	72.50	25.13	70.88	4.00	1.13	2.00	.81
15	22x54	22.00	54.50	29.13	52.88	4.50	1.13	2.00	.81

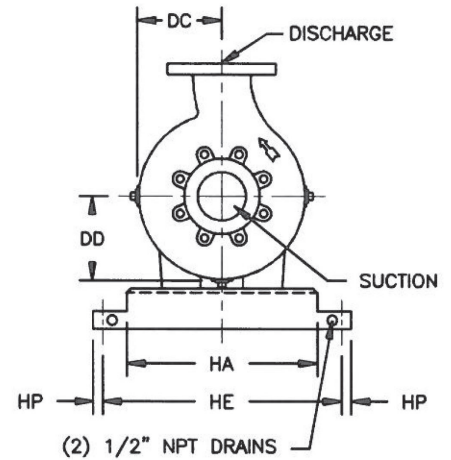
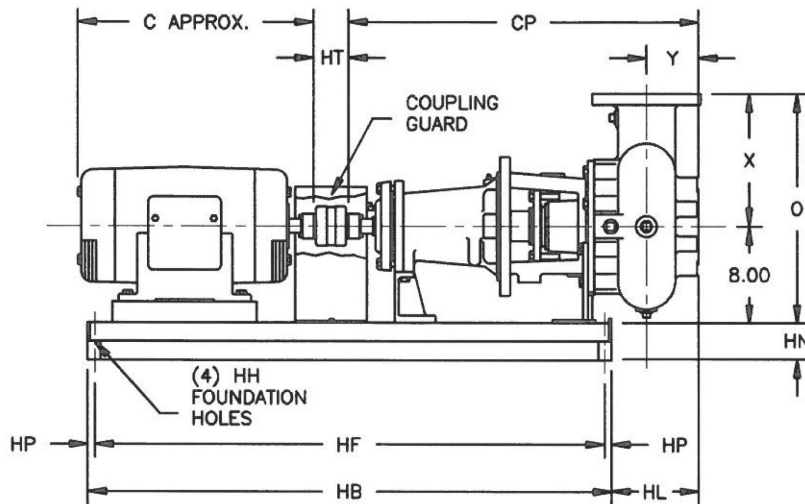
DISCH SUCT BORE CASE	FRAME POWER	FRAME C	FRAME																							
			143T	145T	182T	184T	213T	215T	254T	256T	284T	284TS	286T	286TS	324T	324TS	326T	326TS	364T	364TS	365T	365TS	404T	404TS		
3x3x9	3C		5	5	5	5	6	6	9	9	9	9	9	9	9	9	9	9	9	9	12	12	12	12		
3x3x12	3C		5	5	5	5	6	6	9	9	9	9	9	9	9	9	9	9	9	9	12	12	12	12	15	15
4x4x9	3C		5	5	5	5	6	6	9	9	9	9	9	9	9	9	9	9	9	9	12	12	12	12		
4x4x12	3C		5	5	5	5	6	6	9	9	9	9	9	9	9	9	9	9	9	9	12	12	12	12	15	15

AURORA® MODEL 661A PUMP

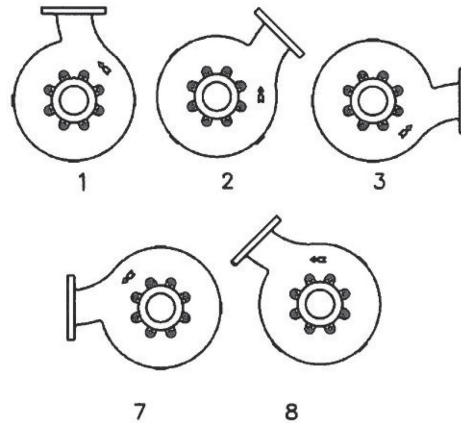
3" & 4" PUMPS

DRIP RIM STEEL BASE

BASE SELECTIONS FOR OPTIONAL SPACER COUPLING



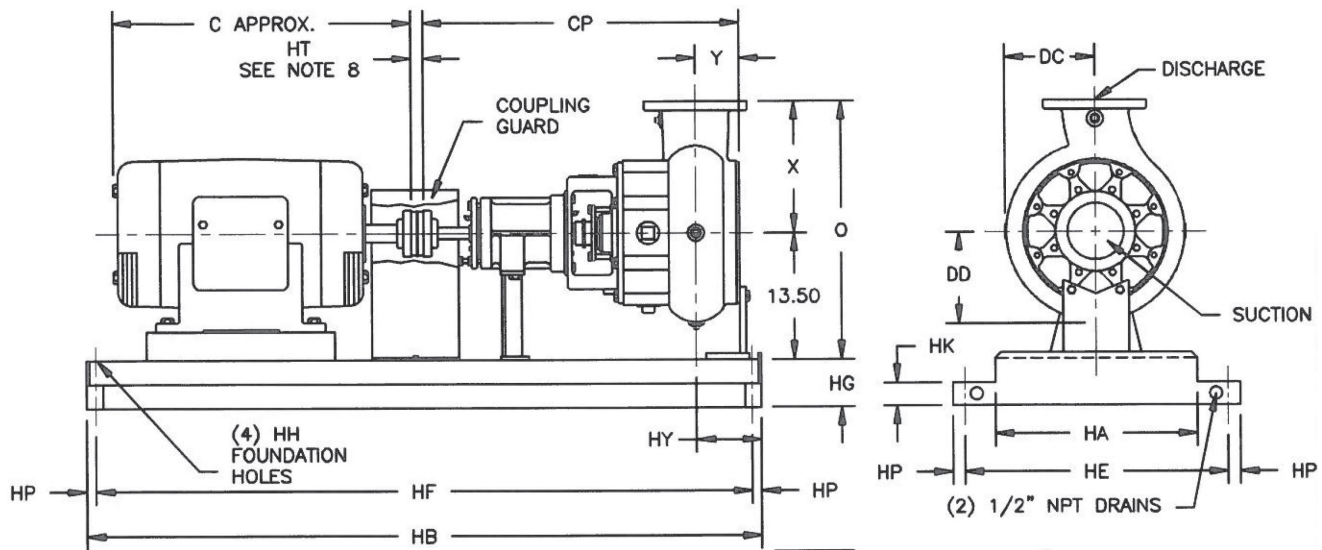
- NOTES:
 1. ALL DIMENSIONS IN INCHES.
 2. DIMENSIONS MAY VARY ± .25\"/>



DISCHARGE POSITIONS AVAILABLE
(VIEWED FROM SUCTION END)

BASE	SIZE	HA	HB	HE	HF	HG	HH	HK	HP
5	11x36	11.00	36.50	15.88	35.13	3.00	.88	1.50	.69
6	11x42	11.00	42.50	15.88	41.13	3.00	.88	1.50	.69
8	14x42	14.00	42.50	19.00	41.00	3.00	1.00	1.50	.75
9	14x48	14.00	48.50	19.00	47.00	3.00	1.00	1.50	.75
10	14x56	14.00	56.50	19.00	55.00	3.00	1.00	1.50	.75
11	18x46	18.00	46.50	25.13	44.88	4.00	1.13	2.00	.81
12	18x54	18.00	54.50	25.13	52.88	4.00	1.13	2.00	.81
13	18x64	18.00	64.50	25.13	62.88	4.00	1.13	2.00	.81
14	18x72	18.00	72.50	25.13	70.88	4.00	1.13	2.00	.81
15	22x54	22.00	54.50	29.13	52.88	4.50	1.13	2.00	.81

DISCH SUCT BORE CASE	FRAME POWER	FRAME																						
		C	13	13	13	14	16	18	21	23	24	22	25	24	26	25	28	26	29	27	30	28	33	30
3x3x9	3C	6	6	6	6	6	6	9	9	12	12	12	12	12	12	12	12	12	12	12	12	12	12	12
3x3x12	3C	5	5	5	5	6	6	9	9	9	9	9	9	12	12	12	12	12	12	12	12	12	15	15
4x4x9	3C	6	6	6	6	6	6	9	9	12	12	12	12	12	12	12	12	12	12	12	12	12	12	12
4x4x12	3C	5	5	5	5	6	6	9	9	9	9	9	9	12	12	12	12	12	12	12	12	12	15	15



NOTES:

1. ALL DIMENSIONS IN INCHES.
2. DIMENSIONS MAY VARY $\pm .25"$.
3. NOT FOR CONSTRUCTION PURPOSES UNLESS CERTIFIED.
4. TWO (2) 1/2" NPT CONNECTIONS 180° APART, ON THE STUFFING BOX FOR LUBRICATION PURPOSES ARE FURNISHED AS STANDARD. ON PACKED PUMPS AN ALEMITE FITTING IS PROVIDED IN ONE TAP AND THE REMAINING TAP IS PLUGGED.
5. DISCHARGE POSITION 1 IS FURNISHED AS STANDARD UNLESS SPECIFIED.
6. SUCTION AND DISCHARGE FLANGES ARE AMERICAN STANDARD 125 LBS.
7. CONDUIT BOX IS SHOWN IS APPROXIMATE LOCATION. DIMENSIONS ARE NOT SPECIFIED AS THEY MAY VARY WITH EACH MOTOR MANUFACTURER.
8. STANDARD COUPLING ILLUSTRATED. "HT" DIMENSION .13"-2.50". SPACER COUPLING "HT" DIMENSION IS 3.50"-9.00".
9. REFER TO PAGE 254.1 FOR STANDARD COUPLING BASE NUMBER SELECTION. REFER TO PAGE 254.2 FOR SPACER COUPLING BASE NUMBER SELECTION.

DISCHARGE POSITIONS AVAILABLE (VIEWED FROM SUCTION END)

BASE	SIZE	HA	HB	HE	HF	HG	HH	HK	HP
10	14x56	14.00	56.50	19.00	55.00	3.00	1.00	1.50	.75
11	18x46	18.00	46.50	25.13	44.88	4.00	1.13	2.00	.81
12	18x54	18.00	54.50	25.13	52.88	4.00	1.13	2.00	.81
13	18x64	18.00	64.50	25.13	62.88	4.00	1.13	2.00	.81
14	18x72	18.00	72.50	25.13	70.88	4.00	1.13	2.00	.81
15	22x54	22.00	54.50	29.13	52.88	4.50	1.13	2.00	.81
18	22x82	22.00	82.50	29.13	80.88	4.50	1.13	2.00	.81

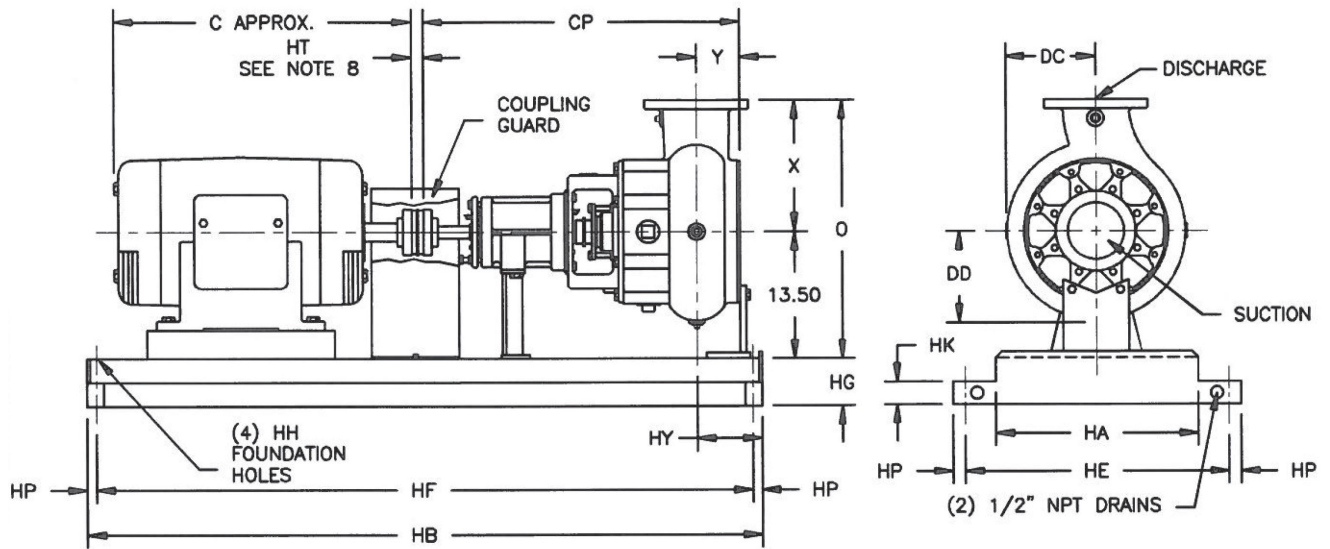
DISCH SUCT BORE CASE	FRAME POWER	O	X	Y	CP	DC	DD	HY
6x6x12	4C	27.50	14.00	4.63	31.75	9.88	9.88	5.25
6x6x12	5E	27.50	14.00	4.63	42.75	9.88	9.88	5.25
6x6x15	5E	29.50	16.00	4.63	42.75	11.06	11.06	5.25

AURORA® MODEL 661A PUMP

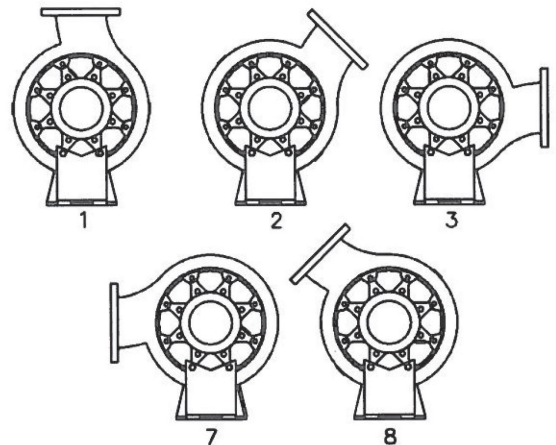
6" PUMPS

DRIP RIM STEEL BASE

BASE SELECTIONS FOR STANDARD COUPLING



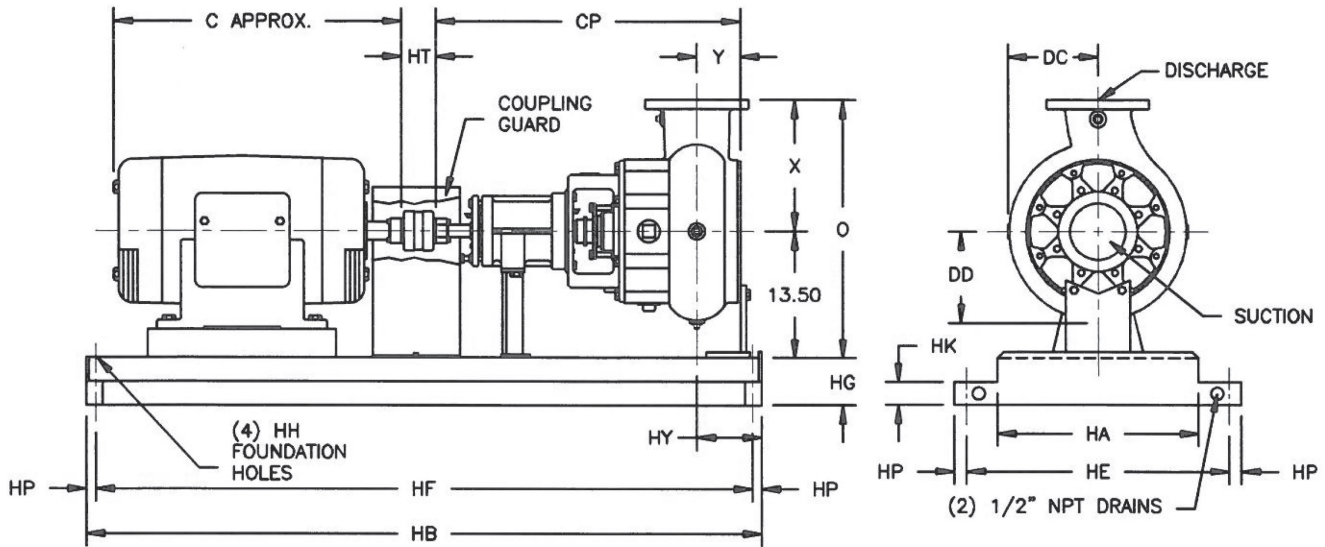
- NOTES:
 1. ALL DIMENSIONS IN INCHES.
 2. DIMENSIONS MAY VARY ± .25".
 3. NOT FOR CONSTRUCTION PURPOSES UNLESS CERTIFIED.
 4. THIS PAGE IS FOR BASE DIMENSIONS FOR ALL OTHER DIMENSIONS REFER TO PAGE 254.



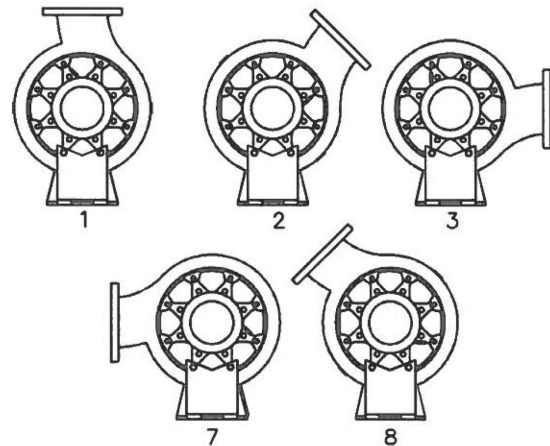
DISCHARGE POSITIONS AVAILABLE
(VIEWED FROM SUCTION END)

BASE	SIZE	HA	HB	HE	HF	HG	HH	HK	HP
10	14x56	14.00	56.50	19.00	55.00	3.00	1.00	1.50	.75
11	18x46	18.00	46.50	25.13	44.88	4.00	1.13	2.00	.81
12	18x54	18.00	54.50	25.13	52.88	4.00	1.13	2.00	.81
13	18x64	18.00	64.50	25.13	62.88	4.00	1.13	2.00	.81
14	18x72	18.00	72.50	25.13	70.88	4.00	1.13	2.00	.81
15	22x54	22.00	54.50	29.13	52.88	4.50	1.13	2.00	.81
18	22x82	22.00	82.50	29.13	80.88	4.50	1.13	2.00	.81

DISCH SUCT BORE CASE	FRAME POWER	C	FRAME	254T	256T	284T	284TS	286T	286TS	324T	324TS	326T	326TS	364T	364TS	365T	365TS	404T	404TS	405T	405TS	444T	444TS	445T	445TS
			21	23	24	22	25	24	26	25	28	26	29	27	30	28	33	30	34	31	38	34	40	36	
6x6x12	4C		10	10	13	13	13	13	13	13	13	13	13	13	13	18	18	18	18	18	18	18	18	18	18
6x6x12	5F		14	14	14	14	14	14	14	14	14	14	14	14	18	18	18	18	18	18	18	18	18	18	18
6x6x15	5F		14	14	14	14	14	14	14	14	14	14	14	18	18	18	18	18	18	18	18	18	18	18	18



- NOTES:
 1. ALL DIMENSIONS IN INCHES.
 2. DIMENSIONS MAY VARY ± .25".
 3. NOT FOR CONSTRUCTION PURPOSES UNLESS CERTIFIED.
 4. THIS PAGE IS FOR BASE DIMENSIONS FOR ALL OTHER DIMENSIONS REFER TO PAGE 254.



DISCHARGE POSITIONS AVAILABLE
(VIEWED FROM SUCTION END)

BASE	SIZE	HA	HB	HE	HF	HG	HH	HK	HP
10	14x56	14.00	56.50	19.00	55.00	3.00	1.00	1.50	.75
11	18x46	18.00	46.50	25.13	44.88	4.00	1.13	2.00	.81
12	18x54	18.00	54.50	25.13	52.88	4.00	1.13	2.00	.81
13	18x64	18.00	64.50	25.13	62.88	4.00	1.13	2.00	.81
14	18x72	18.00	72.50	25.13	70.88	4.00	1.13	2.00	.81
15	22x54	22.00	54.50	29.13	52.88	4.50	1.13	2.00	.81
18	22x82	22.00	82.50	29.13	80.88	4.50	1.13	2.00	.81

DISCH SUCTION BORE CASE	FRAME POWER	FRAME																					
		254T	256T	284T	284TS	286T	286TS	324T	324TS	326T	326TS	364T	364TS	365T	365TS	404T	404TS	405T	405TS	444T	444TS	445T	445TS
6x6x12	4C	21	23	24	22	25	24	26	25	28	26	29	27	30	28	33	30	34	31	38	34	40	36
6x6x12	5E	12	12	13	13	13	13	13	13	13	13	13	13	13	13								
6x6x15	5E	14	14	18	18	18	18	18	18	18	18	18	18	18	18								

FORMED STEEL BASE STANDARD COUPLING

DATED **NOVEMBER 1988**

SUPERSEDES PAGE 351

DATED FEBRUARY 1976

TABLE I

DISCH SUCTION CASE BORE POWER SERIES	MOTOR FRAME	143T	145T	182T	184T	213T	215T	254T	256T	284TS	284T	286TS	286T	324TS	324T
		C	11	12	13	14	16	18	21	23	22	24	24	25	25
3x3x9	3	BASE	1	1	1	1	1	3	3	4	4				
		HY	4 7/8	4 7/8	4 7/8	4 7/8	4 7/8	4 7/8	4 7/8	4 7/8	4 7/8	4 7/8			
4x4x9	3	BASE			1	1	1	3	3	4	4	4	4	4	4
		HY			5 7/8	5 7/8	5 7/8	5 7/8	5 7/8	5 7/8	5 7/8	5 7/8	5 7/8	5 7/8	5 7/8
3x3x12	3	BASE				1	1	3	3	4	4	4	4	4	4
		HY				5	5	5	5	5	5	5	5	5	5
4x4x12	3	BASE					1	3	3	4	4	4	4	4	4
		HY					6	6	6	6	6	6	6	6	6
6x6x12	4	BASE						5	5	5	5	6	6	6	6
		HY						5 1/4	5 1/4	5 1/4	5 1/4	5 1/4	5 1/4	5 1/4	5 1/4
6x6x12	5	BASE						7	7	7	7	7	7	8	8
		HY						5 1/4	5 1/4	5 1/4	5 1/4	5 1/4	5 1/4	5 1/4	5 1/4
6x6x15	5	BASE						7	7	7	7	7	7	8	8
		HY						5 1/4	5 1/4	5 1/4	5 1/4	5 1/4	5 1/4	5 1/4	5 1/4

TABLE I (CONTINUED)

DISCH SUCTION CASE BORE POWER SERIES	MOTOR FRAME	326TS	326T	364TS	364T	365TS	365T	404TS	404T	405TS	405T	444TS	444T	445TS	445T
		C	26	28	27	29	28	30	30	33	32	35	34	38	36
3x3x12	3	BASE	5	5	4	5	4	5							
		HY	5	5	5	5	5	5							
4x4x12	3	BASE	5	5	4	5	4	5							
		HY	6	6	6	6	6	6							
6x6x12	4	BASE	6	6	6	6	6	7							
		HY	5 1/4	5 1/4	5 1/4	5 1/4	5 1/4	5 1/4							
6x6x12	5	BASE	8	8	8	8	8	8							
		HY	5 1/4	5 1/4	5 1/4	5 1/4	5 1/4	5 1/4							
6x6x15	5	BASE	8	8	8	8	8	8							
		HY	5 1/4	5 1/4	5 1/4	5 1/4	5 1/4	5 1/4							

NOTES:
 1. ALL DIMENSIONS IN INCHES.
 2. NOT FOR CONSTRUCTION PURPOSES UNLESS CERTIFIED.

DATED NOVEMBER 1988

FORMED STEEL BASE

SUPERSEDES PAGE 352

SPACER COUPLING

DATED JUNE 1983

TABLE 2

DISCH SUCTION CASE BORE	POWER SERIES	MOTOR FRAME	143T	145T	182T	184T	213T	215T	254T	256T	284TS	284T	286TS	286T	324TS	324T	
			C	11	12	13	14	16	18	21	23	22	24	24	25	25	26
3x3x9	3	BASE	2	2	2	2	2	2	4	4	5	5					
		HY	4 7/8	4 7/8	4 7/8	4 7/8	4 7/8	4 7/8	4 7/8	4 7/8	4 7/8	4 7/8	4 7/8				
4x4x9	3	BASE			2	2	2	2	4	4	5	5	5	5	5	5	5
		HY			5 7/8	5 7/8	5 7/8	5 7/8	5 7/8	5 7/8	5 7/8	5 7/8	5 7/8	5 7/8	5 7/8	5 7/8	5 7/8
3x3x12	3	BASE					2	2	4	4	5	5	5	5	5	5	5
		HY					5	5	5	5	5	5	5	5	5	5	5
4x4x12	3	BASE						2	4	4	5	5	5	5	5	5	5
		HY						6	6	6	6	6	6	6	6	6	6
6x6x12	4	BASE							6	6	6	6	7	7	7	7	7
		HY							5 1/4	5 1/4	5 1/4	5 1/4	5 1/4	5 1/4	5 1/4	5 1/4	5 1/4
6x6x12	5	BASE							8	8	9	9	9	9	9	9	9
		HY							5 1/4	5 1/4	5 1/4	5 1/4	5 1/4	5 1/4	5 1/4	5 1/4	5 1/4
6x6x15	5	BASE							8	8	9	9	9	9	9	9	9
		HY							5 1/4	5 1/4	5 1/4	5 1/4	5 1/4	5 1/4	5 1/4	5 1/4	5 1/4

TABLE 2 (CONTINUED)

DISCH SUCTION CASE BORE	POWER SERIES	MOTOR FRAME	326TS	326T	364TS	364T	365TS	365T	404TS	404T	405TS	405T	444TS	444T	445TS	445T
			C	26	28	27	29	28	30	30	33	32	35	34	38	36
3x3x12	3	BASE	6	6	5	6	5	6								
		HY	5	5	5	5	5	5								
4x4x12	3	BASE	6	6	5	6	5	6								
		HY	6	6	6	6	6	6								
6x6x12	4	BASE	7	7	7	7	7	7								
		HY	5 1/4	5 1/4	5 1/4	5 1/4	5 1/4	5 1/4	5 1/4							
6x6x12	5	BASE	9	9	9	9	9	9								
		HY	5 1/4	5 1/4	5 1/4	5 1/4	5 1/4	5 1/4	5 1/4							
6x6x15	5	BASE	9	9	9	9	9	9								
		HY	5 1/4	5 1/4	5 1/4	5 1/4	5 1/4	5 1/4	5 1/4							

NOTES:

1. ALL DIMENSIONS IN INCHES.
2. NOT FOR CONSTRUCTION PURPOSES UNLESS CERTIFIED.

AURORA MODEL 661A PUMP SPACER COUPLINGS

SECTION **660** PAGE **353**
DATED **NOVEMBER 1988**
SUPERSEDES PAGE 353
DATED JUNE 1983

TABLE 3

DISCH SUCTION CASE BORE	POWER SERIES	MOTOR FRAME	143T	145T	182T	184T	213T	215T	254T	256T	284TS	284T	286TS	286T	324TS	324T	
			SIZE	SIZE	SIZE	SIZE	SIZE	SIZE	SIZE	SIZE	SIZE	SIZE	SIZE	SIZE	SIZE	SIZE	SIZE
3x3x9	3	SIZE	6	6	6	6	6	6	7	8	8	8					
		HT	5	5	5	5	5	5	5	5	5	5					
4x4x9	3	SIZE			6	6	6	6	7	8	8	8	9	9	9	9	9
		HT			5	5	5	5	5	5	5	5	5	5	5	5	5
3x3x12	3	SIZE					6	6	7	8	8	8	9	9	9	9	9
		HT					5	5	5	5	5	5	5	5	5	5	5
4x4x12	3	SIZE						6	7	8	8	8	9	9	9	9	9
		HT						5	5	5	5	5	5	5	5	5	5
6x6x12	4	SIZE							7	8	8	8	9	9	9	9	9
		HT							5	5	5	5	5	5	5	5	5
6x6x12	5	SIZE							8	8	9	9	9	9	9	9	9
		HT							7 3/4	7 3/4	7 3/4	7 3/4	7 3/4	7 3/4	7 3/4	7 3/4	7 3/4
6x6x15	5	SIZE							8	8	9	9	9	9	9	9	9
		HT							7 3/4	7 3/4	7 3/4	7 3/4	7 3/4	7 3/4	7 3/4	7 3/4	7 3/4

TABLE 3 (CONTINUED)

DISCH SUCTION CASE BORE	POWER SERIES	MOTOR FRAME	326TS	326T	364TS	364T	365TS	365T	404TS	404T	405TS	405T	444TS	444T	445TS	445T
			SIZE	SIZE	SIZE	SIZE	SIZE	SIZE	SIZE	SIZE	SIZE	SIZE	SIZE	SIZE	SIZE	SIZE
3x3x12	3	SIZE	10	10	11	10	11	11								
		HT	5	5	5	5	5	5								
4x4x12	3	SIZE	10	10	11	10	11	11								
		HT	5	5	5	5	5	5								
6x6x12	4	SIZE	10	10	11	10	11	11								
		HT	5	5	5	5	5	5								
6x6x12	5	SIZE	10	10	12	10	12	12								
		HT	7 3/4	7 3/4	7 3/4	7 3/4	7 3/4	7 3/4								
6x6x15	5	SIZE	10	10	12	10	12	12								
		HT	7 3/4	7 3/4	7 3/4	7 3/4	7 3/4	7 3/4								

- NOTES:
 1. ALL DIMENSIONS IN INCHES.
 2. NOT FOR CONSTRUCTION PURPOSES UNLESS CERTIFIED.
 3. SIZE: COUPLING SIZE FOR TYPE SC WOODS SURE-FLEX SPACER COUPLINGS.
 4. HT: COUPLING GAP (DISTANCE BETWEEN SHAFTS)

TABLE 4

DISCH SUCTION CASE BORE	POWER SERIES	MOTOR FRAME	143T	145T	182T	184T	213T	215T	254T	256T	284TS	284T	286TS	286T	324TS	324T	
			C	11	12	13	14	16	18	21	23	22	24	24	25	25	26
3x3x9	3	BASE	5	5	5	5	6	6	8	9	9	9					
		HY	4 3/8	4 3/8	4 3/8	4 3/8	4 3/8	4 3/8	4 3/8	4 3/8	4 3/8	4 3/8					
4x4x9	3	BASE			5	5	6	6	8	9	9	9	9	9	11	11	
		HY			5 3/8	5 3/8	5 3/8	5 3/8	5 3/8	5 3/8	5 3/8	5 3/8	5 3/8	5 3/8	5 3/8	5 3/8	5 3/8
3x3x12	3	BASE					6	6	8	9	9	9	9	9	11	11	
		HY					4 1/2	4 1/2	4 1/2	4 1/2	4 1/2	4 1/2	4 1/2	4 1/2	4 1/2	4 1/2	4 1/2
4x4x12	3	BASE					6	8	9	9	9	9	9	9	11	11	
		HY					5 1/2	5 1/2	5 1/2	5 1/2	5 1/2	5 1/2	5 1/2	5 1/2	5 1/2	5 1/2	5 1/2
6x6x12	4	BASE						10	10	10	10	10	13	13	13	13	
		HY						5 1/4	5 1/4	5 1/4	5 1/4	5 1/4	5 1/4	5 1/4	5 1/4	5 1/4	5 1/4
6x6x12	5	BASE						14	14	14	14	14	14	14	14	14	
		HY						5 1/4	5 1/4	5 1/4	5 1/4	5 1/4	5 1/4	5 1/4	5 1/4	5 1/4	5 1/4
6x6x15	5	BASE						14	14	14	14	14	14	14	14	14	
		HY						5 1/4	5 1/4	5 1/4	5 1/4	5 1/4	5 1/4	5 1/4	5 1/4	5 1/4	5 1/4

TABLE 4 (CONTINUED)

DISCH SUCTION CASE BORE	POWER SERIES	MOTOR FRAME	326TS	326T	364TS	364T	365TS	365T	404TS	404T	405TS	405T	444TS	444T	445TS	445T
			C	26	28	27	29	28	30	30	33	32	35	34	38	36
3x3x12	3	BASE	12	12	12	12	12	12								
		HY	4 1/2	4 1/2	4 1/2	4 1/2	4 1/2	4 1/2								
4x4x12	3	BASE	12	12	12	12	12	15	15							
		HY	5 1/2	5 1/2	5 1/2	5 1/2	5 1/2	5 1/2	5 1/2	5 1/2						
6x6x12	4	BASE	13	13	13	13	13									
		HY	5 1/4	5 1/4	5 1/4	5 1/4	5 1/4	5 1/4								
6x6x12	5	BASE	18	18	18	18	18	18	18	18	18	18	18	18	18	18
		HY	5 1/4	5 1/4	5 1/4	5 1/4	5 1/4	5 1/4	5 1/4	5 1/4	5 1/4	5 1/4	5 1/4	5 1/4	5 1/4	5 1/4
6x6x15	5	BASE	18	18	18	18	18	18	18	18	18	18	18	18	18	18
		HY	5 1/4	5 1/4	5 1/4	5 1/4	5 1/4	5 1/4	5 1/4	5 1/4	5 1/4	5 1/4	5 1/4	5 1/4	5 1/4	5 1/4

NOTES:
 1. ALL DIMENSIONS IN INCHES.
 2. NOT FOR CONSTRUCTION PURPOSES UNLESS CERTIFIED.

AURORA MODEL 661A PUMP

SECTION 660 PAGE 355

DRIP RIM STEEL BASE

DATED NOVEMBER 1988

SPACER COUPLING

SUPERSEDES PAGE 355

DATED JUNE 1983

TABLE 5

DISCH SUCTION CASE BORE	POWER SERIES	MOTOR FRAME	143T	145T	182T	184T	213T	215T	254T	256T	284TS	284T	286TS	286T	324TS	324T	
			C	11	12	13	14	16	18	21	23	22	24	24	25	25	26
3x3x9	3	BASE	6	6	6	6	6	6	9	9	9	9					
		HY	4 3/8	4 3/8	4 3/8	4 3/8	4 3/8	4 3/8	4 3/8	4 3/8	4 3/8	4 3/8	4 3/8				
4x4x9	3	BASE		6	6	6	6	6	9	9	9	9	12	12	12	12	12
		HY			5 3/8	5 3/8	5 3/8	5 3/8	5 3/8	5 3/8	5 3/8	5 3/8	5 3/8	5 3/8	5 3/8	5 3/8	5 3/8
3x3x12	3	BASE					6	6	9	9	9	9	12	12	12	12	12
		HY					4 1/2	4 1/2	4 1/2	4 1/2	4 1/2	4 1/2	4 1/2	4 1/2	4 1/2	4 1/2	4 1/2
4x4x12	3	BASE					6	6	9	9	9	9	12	12	12	12	12
		HY					5 1/2	5 1/2	5 1/2	5 1/2	5 1/2	5 1/2	5 1/2	5 1/2	5 1/2	5 1/2	5 1/2
6x6x12	4	BASE							13	13	13	13	13	13	13	13	13
		HY							5 1/4	5 1/4	5 1/4	5 1/4	5 1/4	5 1/4	5 1/4	5 1/4	5 1/4
6x6x12	5	BASE							14	14	18	18	18	18	18	18	18
		HY							5 1/4	5 1/4	5 1/4	5 1/4	5 1/4	5 1/4	5 1/4	5 1/4	5 1/4
6x6x15	5	BASE							14	14	18	18	18	18	18	18	18
		HY							5 1/4	5 1/4	5 1/4	5 1/4	5 1/4	5 1/4	5 1/4	5 1/4	5 1/4

TABLE 5 (CONTINUED)

DISCH SUCTION CASE BORE	POWER SERIES	MOTOR FRAME	326TS	326T	364TS	364T	365TS	365T	404TS	404T	405TS	405T	444TS	444T	445TS	445T
			C	26	28	27	29	28	30	30	33	32	35	34	38	36
3x3x12	3	BASE	12	12	12	12	12	12								
		HY	4 1/2	4 1/2	4 1/2	4 1/2	4 1/2	4 1/2								
4x4x12	3	BASE	12	12	12	12	12	12	15	15						
		HY	5 1/2	5 1/2	5 1/2	5 1/2	5 1/2	5 1/2	5 1/2	5 1/2						
6x6x12	4	BASE	13	13	13	13	13	13								
		HY	5 1/4	5 1/4	5 1/4	5 1/4	5 1/4	5 1/4								
6x6x12	5	BASE	18	18	18	18	18	18								
		HY	5 1/4	5 1/4	5 1/4	5 1/4	5 1/4	5 1/4								
6x6x15	5	BASE	18	18	18	18	18	18								
		HY	5 1/4	5 1/4	5 1/4	5 1/4	5 1/4	5 1/4								

NOTES:
 1. ALL DIMENSIONS IN INCHES.
 2. NOT FOR CONSTRUCTION PURPOSES UNLESS CERTIFIED.

THIS PAGE LEFT INTENTIONALLY BLANK

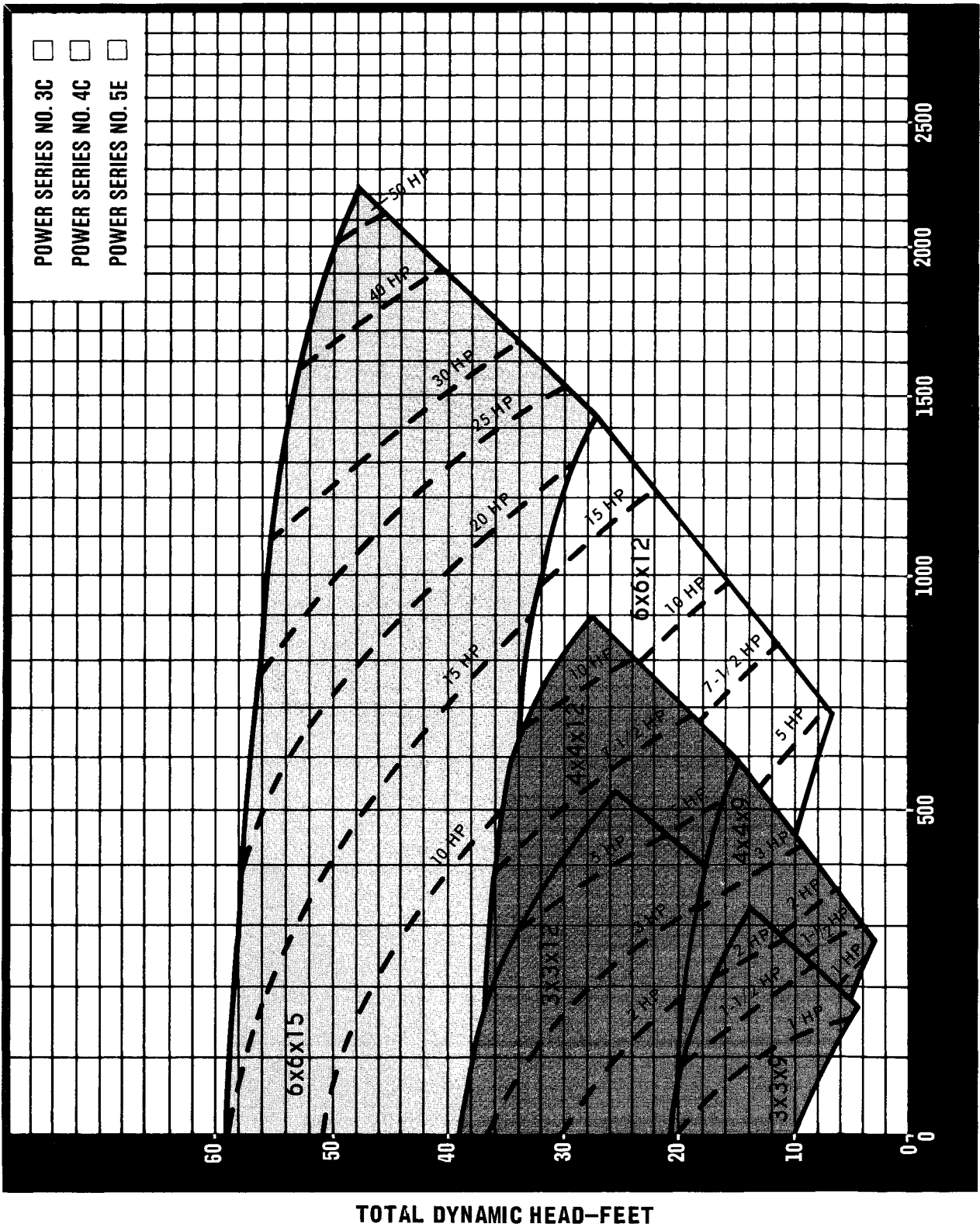
AURORA SERIES 660 SELECTION CHART 885 R.P.M. VORTEX IMPELLER

SECTION 660 PAGE 397

DATED MAY 1991

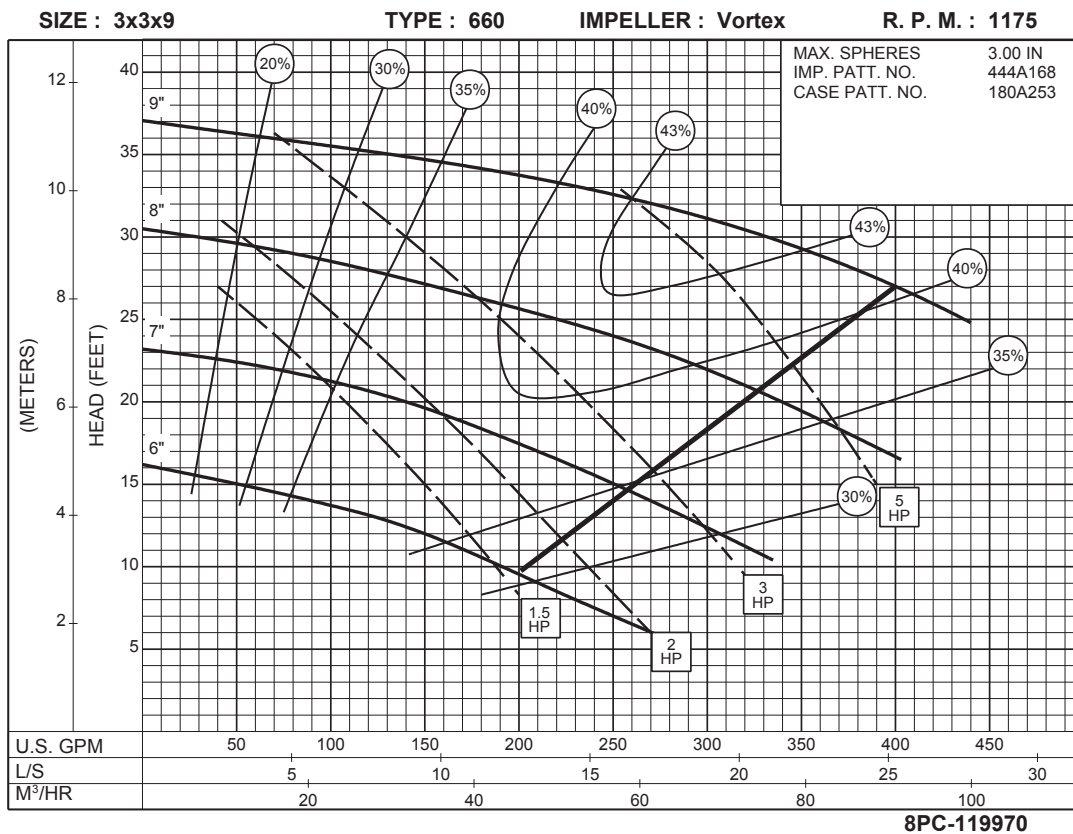
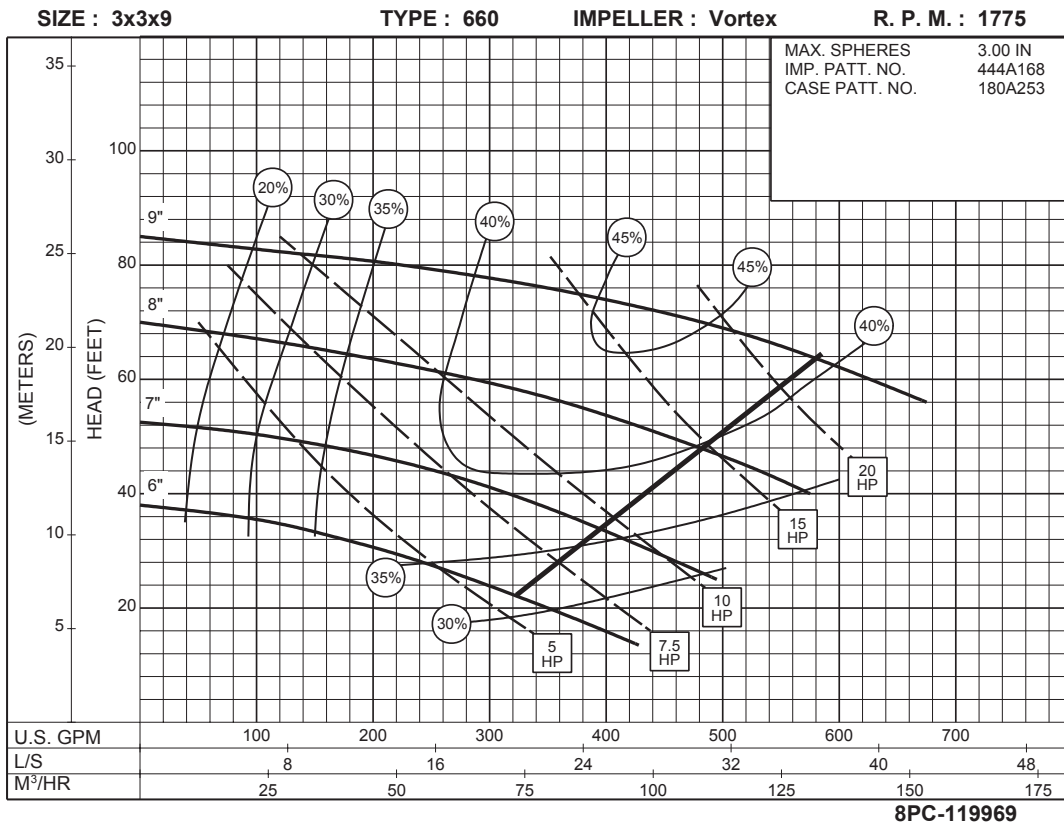
SUPERSEDES PAGE 397

DATED JANUARY 1973



THIS PAGE LEFT INTENTIONALLY BLANK

3 x 3 x 9 SERIES 660 VORTEX IMPELLER

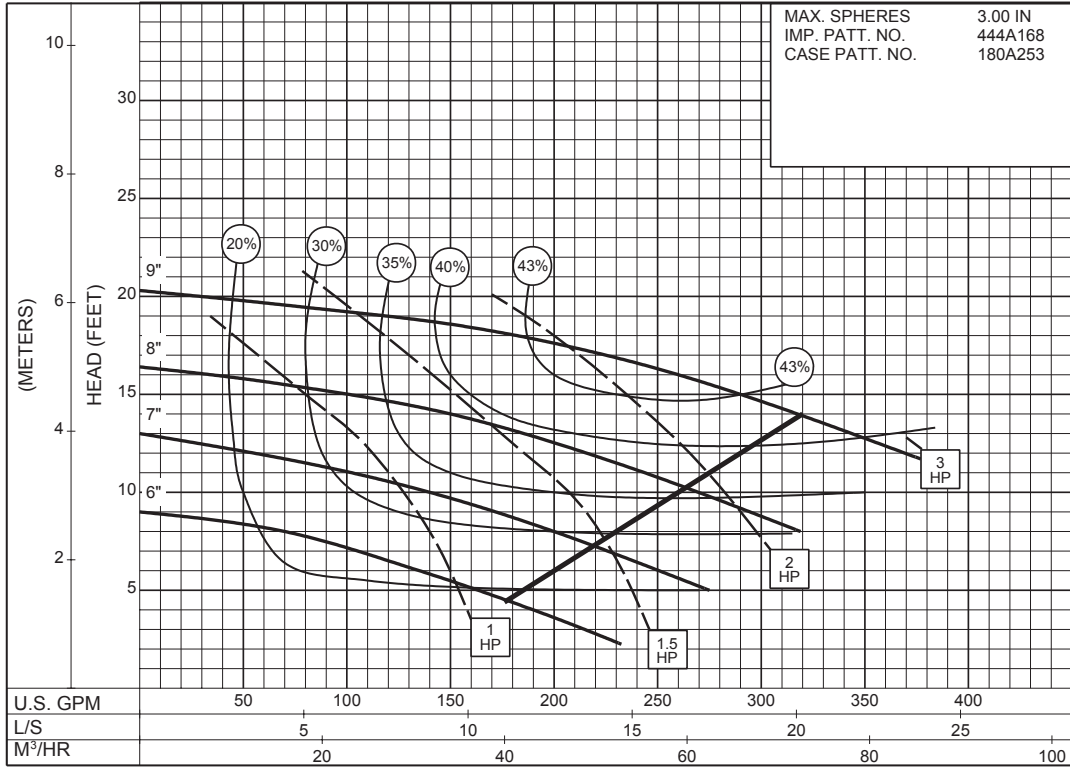


3 x 3 x 9 SERIES 660

VORTEX IMPELLER

SIZE : 3x3x9 TYPE : 660 IMPELLER : Vortex R. P. M. : 885

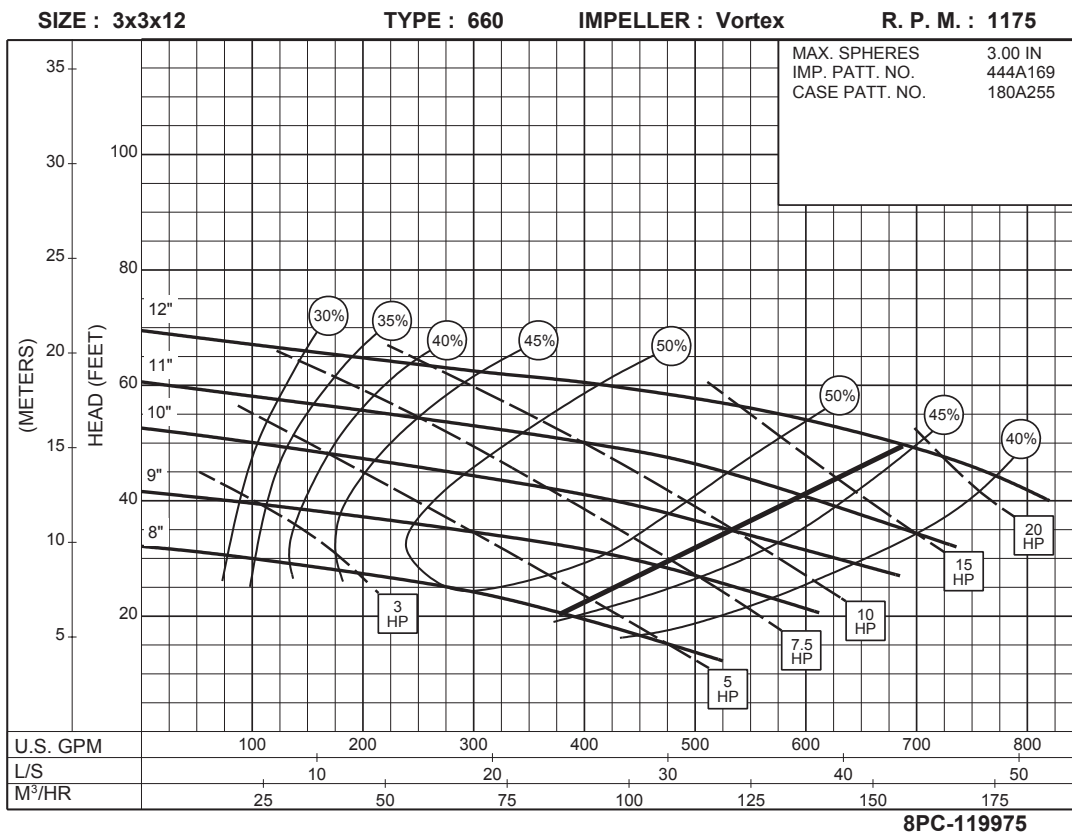
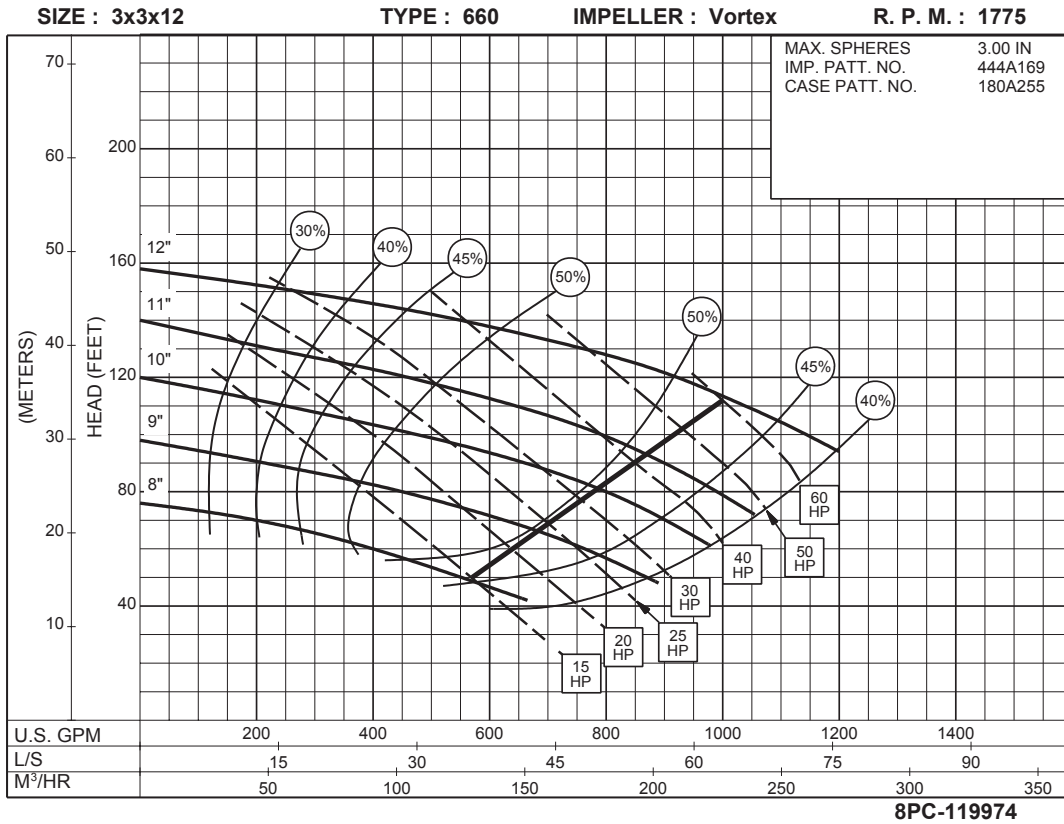
MAX. SPHERES 3.00 IN
IMP. PATT. NO. 444A168
CASE PATT. NO. 180A253



885
RPM

8PC-119971

3 x 3 x 12
SERIES 660
 VORTEX IMPELLER

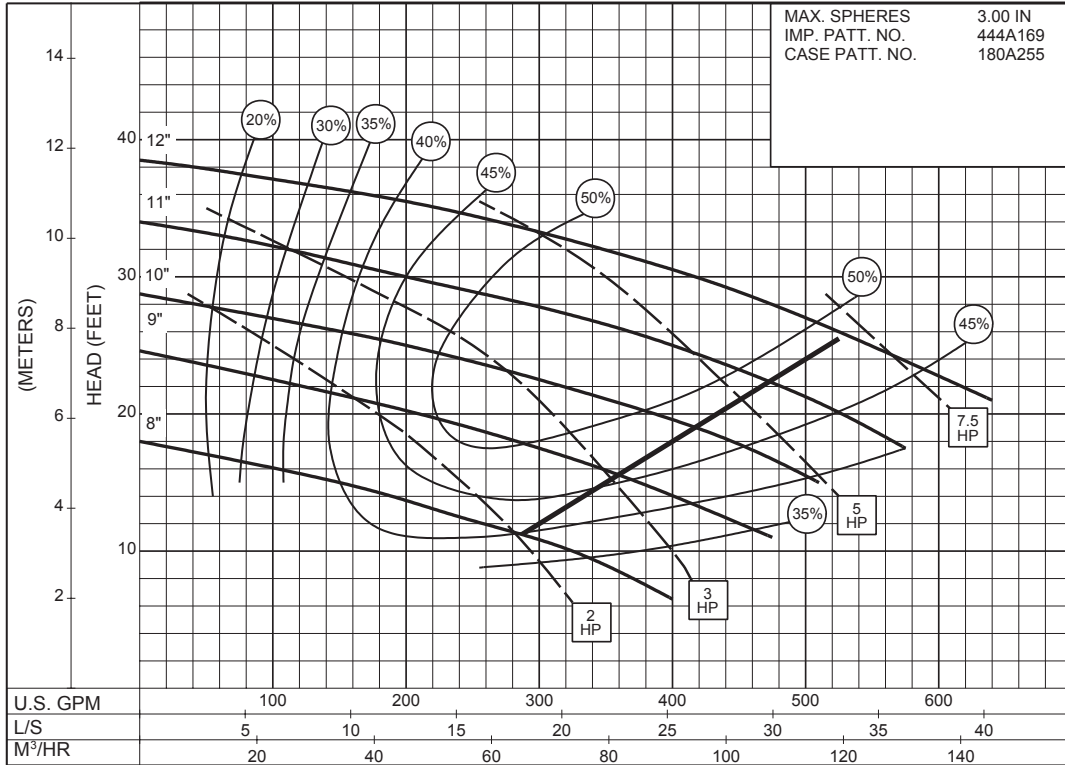


3 x 3 x 12 SERIES 660

VORTEX IMPELLER

SIZE : 3x3x12 TYPE : 660 IMPELLER : Vortex R. P. M. : 885

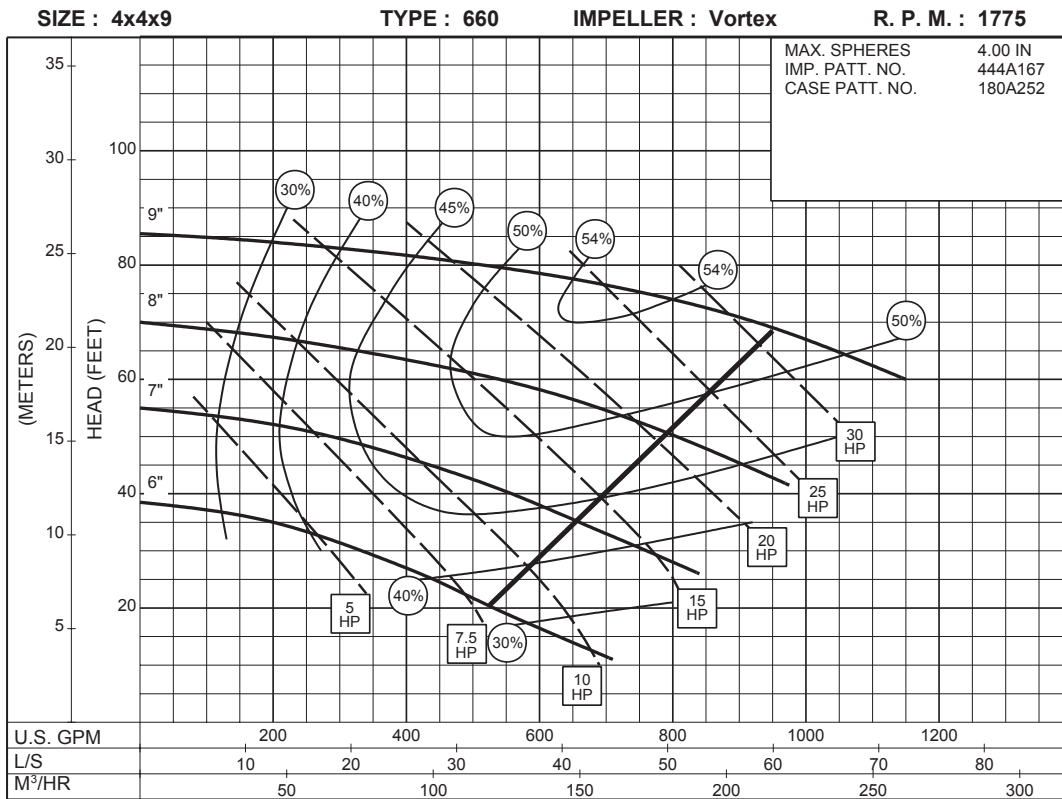
MAX. SPHERES 3.00 IN
IMP. PATT. NO. 444A169
CASE PATT. NO. 180A255



8PC-119976

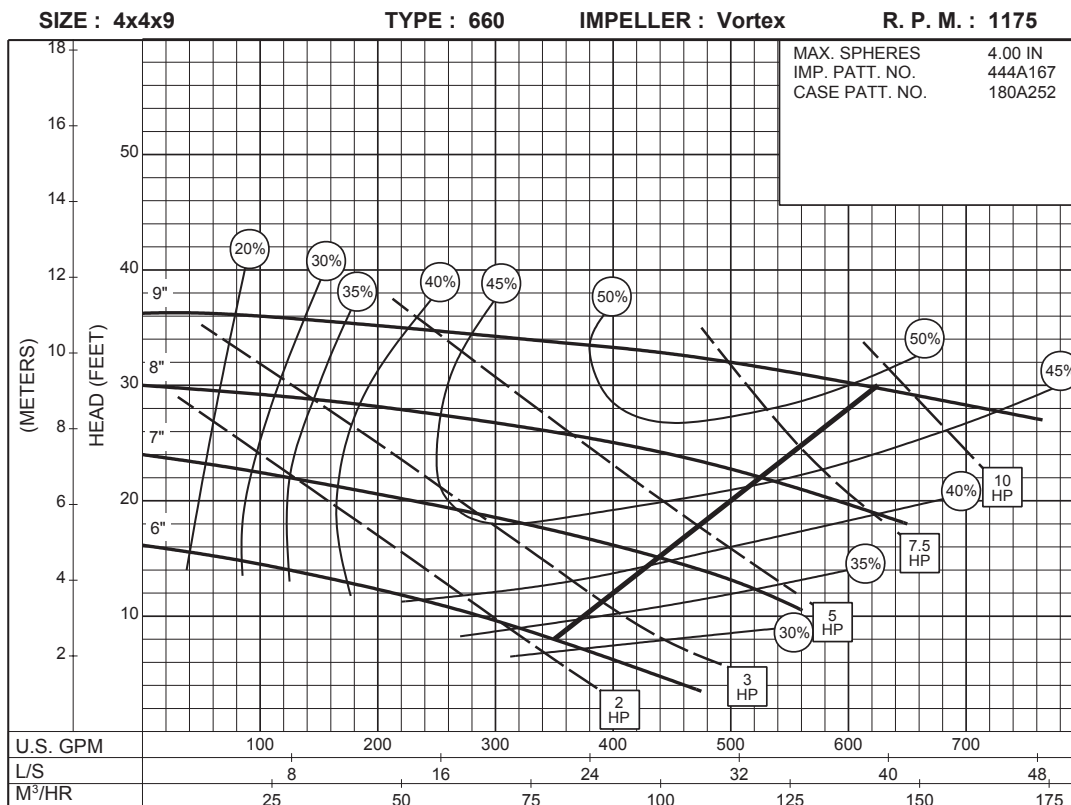
885
RPM

4 x 4 x 9 SERIES 660 VORTEX IMPELLER



8PC-119979

1775
RPM



8PC-119980

1175
RPM

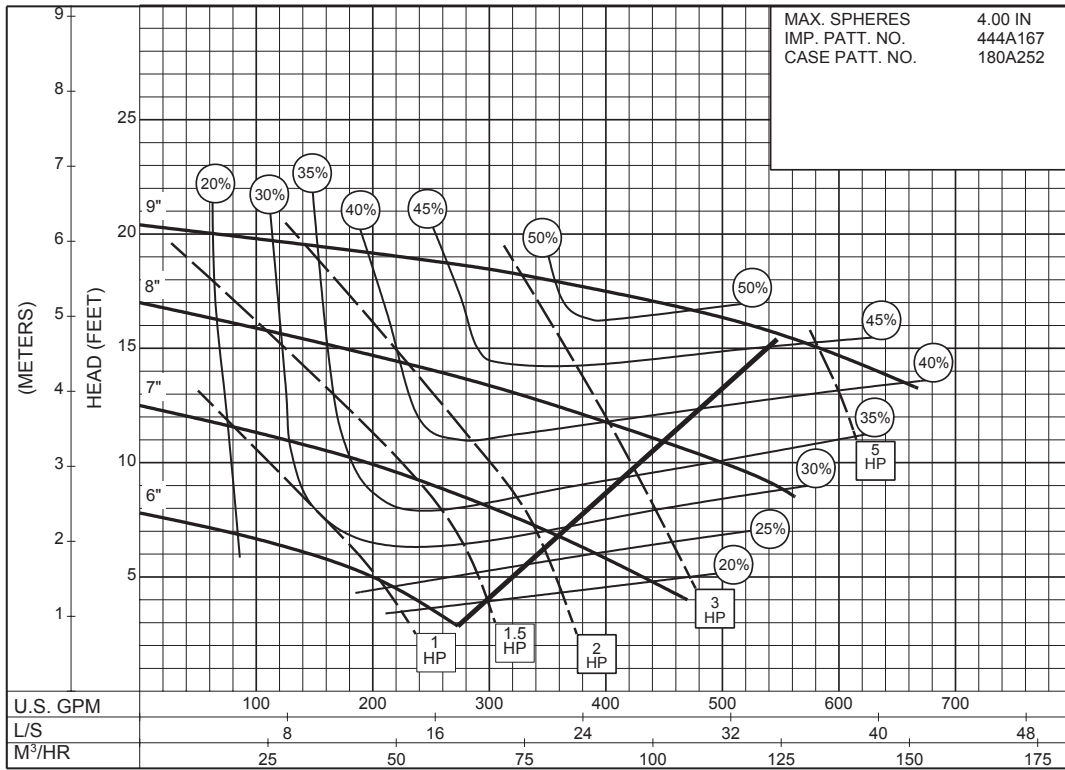
4 x 4 x 9 SERIES 660

VORTEX IMPELLER

SIZE : 4x4x9 TYPE : 660 IMPELLER : Vortex R. P. M. : 885

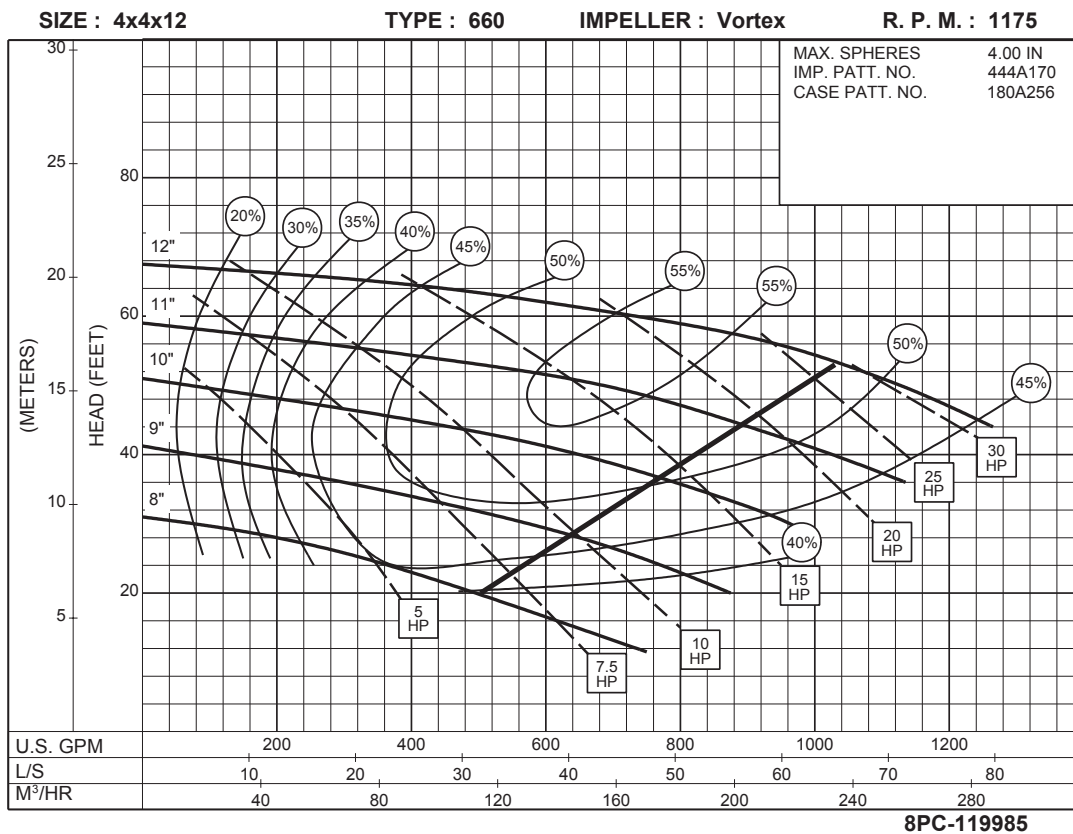
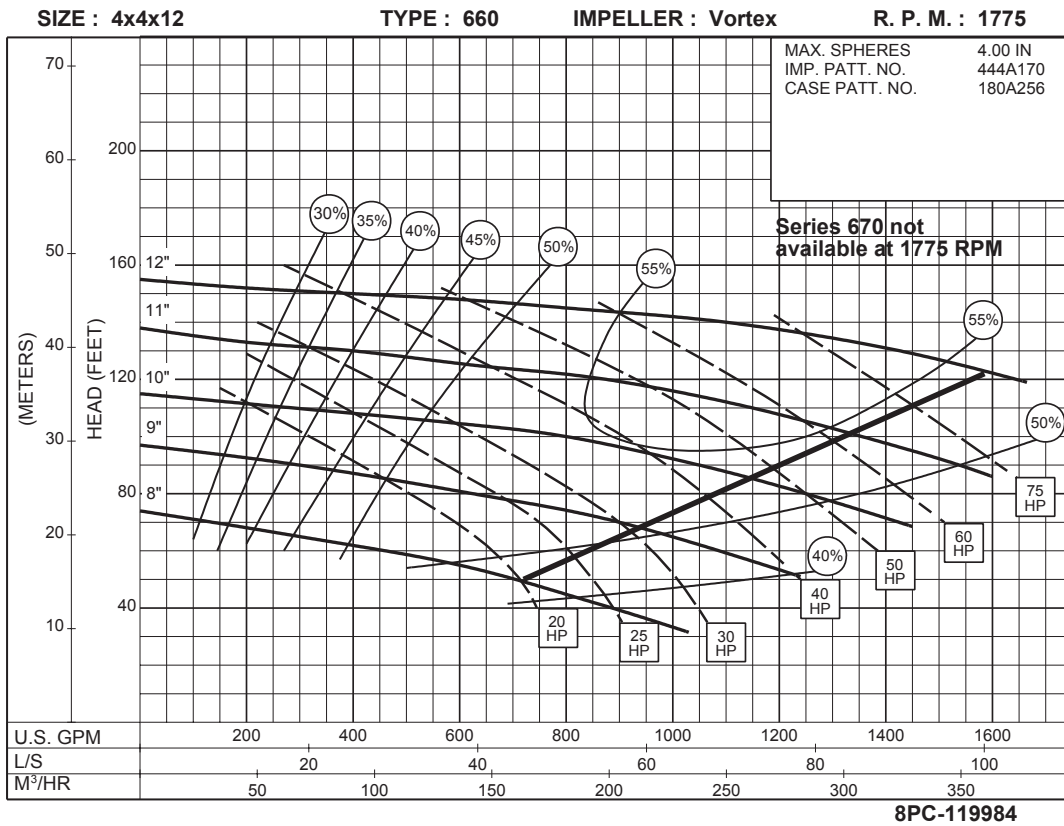
MAX. SPHERES 4.00 IN
IMP. PATT. NO. 444A167
CASE PATT. NO. 180A252

885
RPM



8PC-119980

4 x 4 x 12 SERIES 660 VORTEX IMPELLER

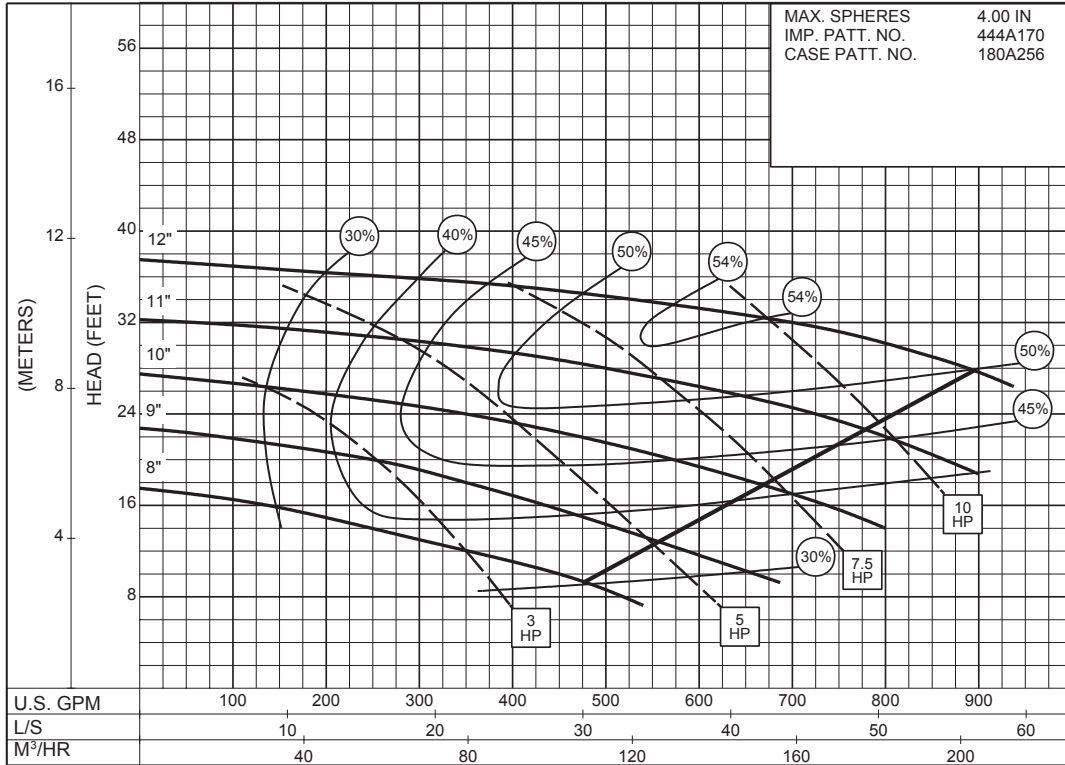


4 x 4 x 12 SERIES 660

VORTEX IMPELLER

SIZE : 4x4x12 TYPE : 660 IMPELLER : Vortex R. P. M. : 885

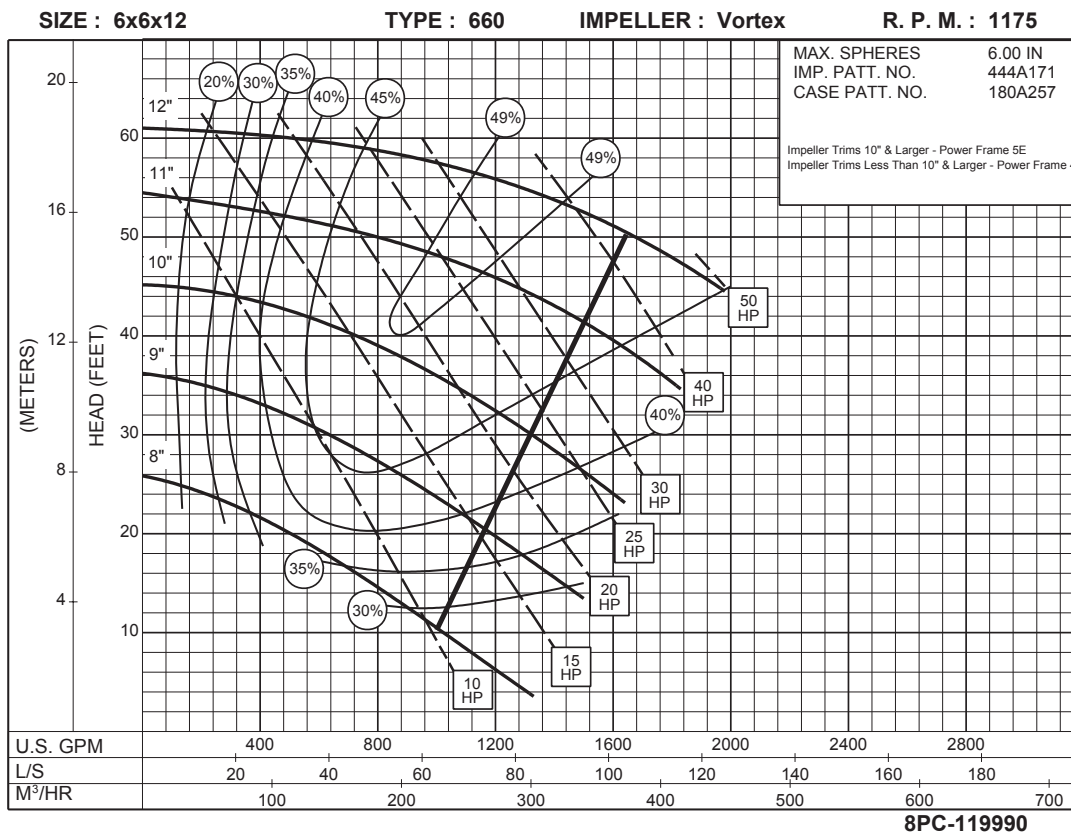
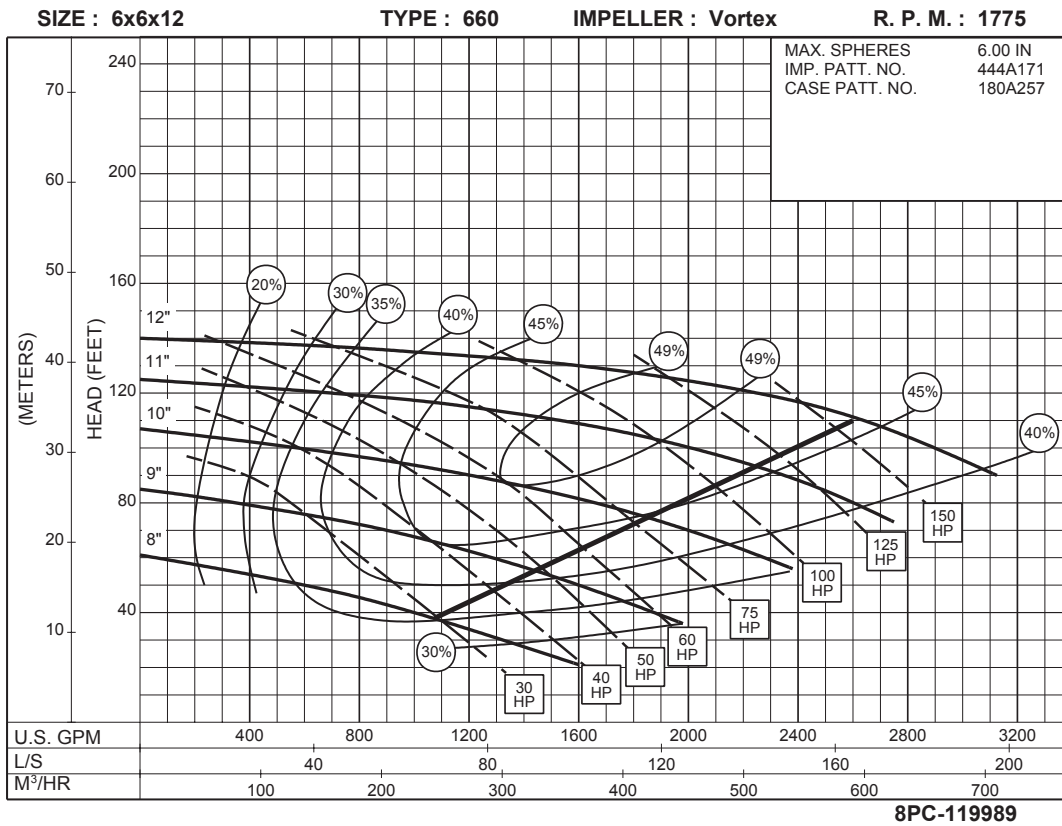
MAX. SPHERES 4.00 IN
IMP. PATT. NO. 444A170
CASE PATT. NO. 180A256



885
RPM

8PC-119986

6 x 6 x 12
SERIES 660
 VORTEX IMPELLER



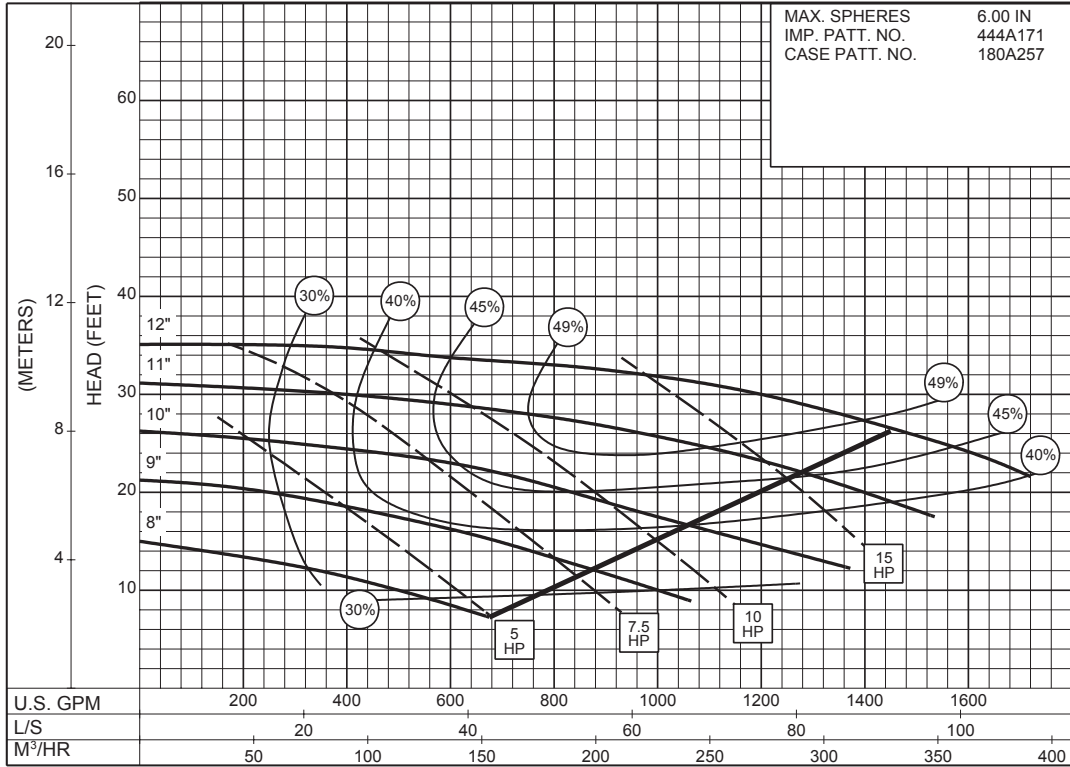
6 x 6 x 12 SERIES 660

VORTEX IMPELLER

SIZE : 6x6x12 TYPE : 660 IMPELLER : Vortex R. P. M. : 885

MAX. SPHERES 6.00 IN
IMP. PATT. NO. 444A171
CASE PATT. NO. 180A257

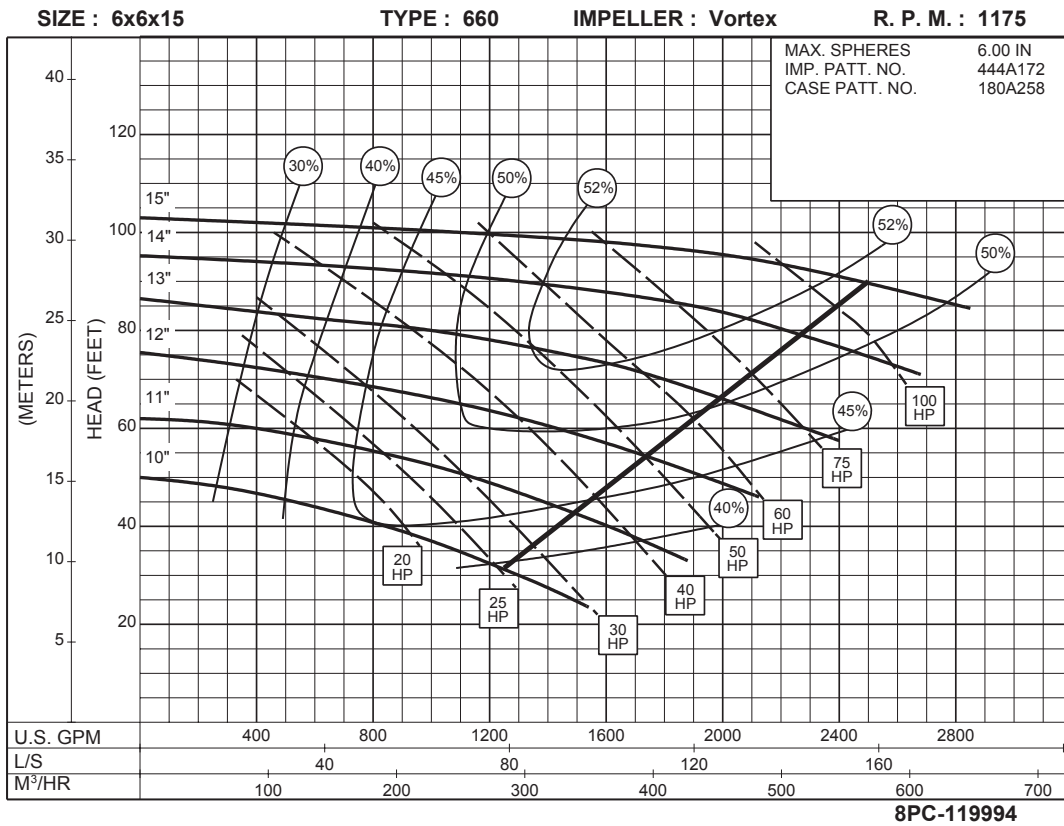
885
RPM



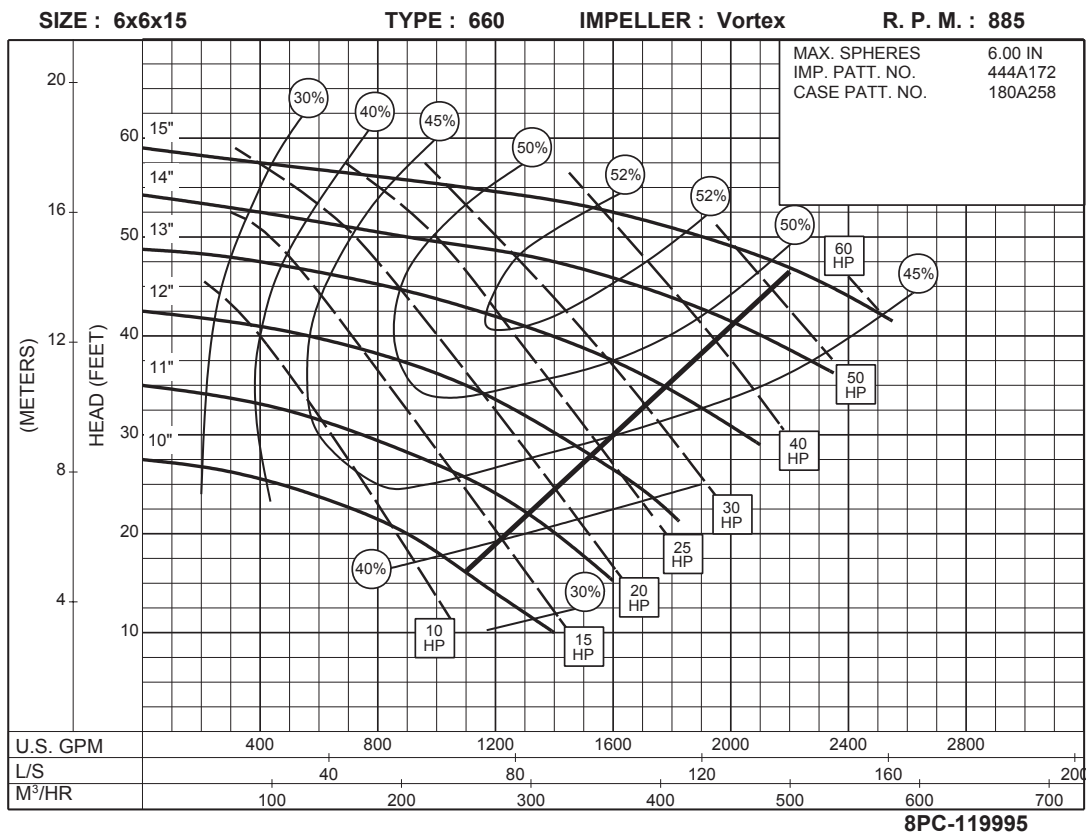
8PC-119991

6 x 6 x 15 SERIES 660

VORTEX IMPELLER



1175
RPM



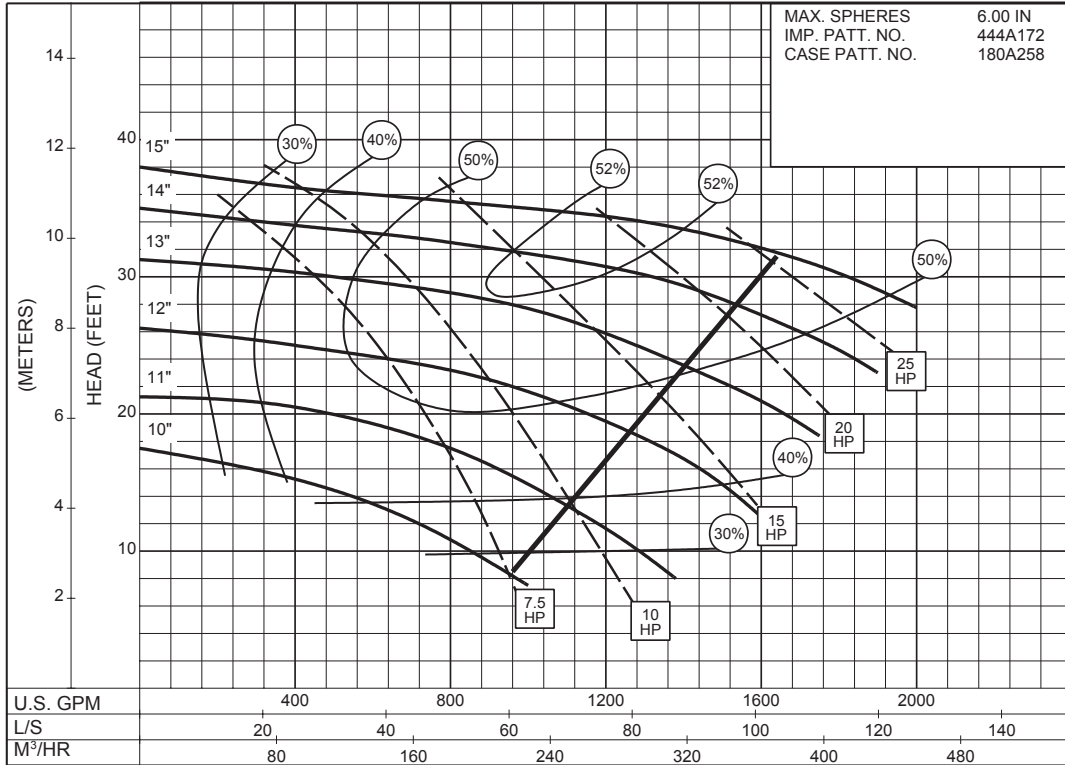
885
RPM

6 x 6 x 15 SERIES 660

VORTEX IMPELLER

SIZE : 6x6x15 TYPE : 660 IMPELLER : Vortex R. P. M. : 710

MAX. SPHERES 6.00 IN
IMP. PATT. NO. 444A172
CASE PATT. NO. 180A258

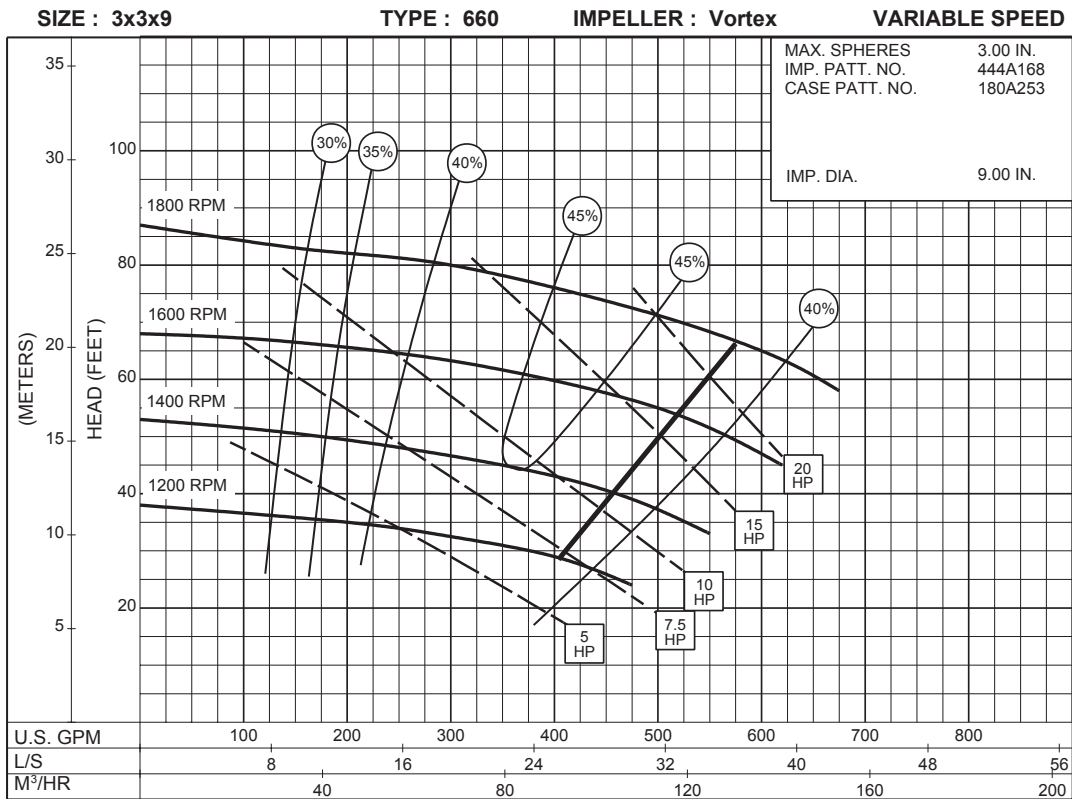


710
RPM

8PC-119996

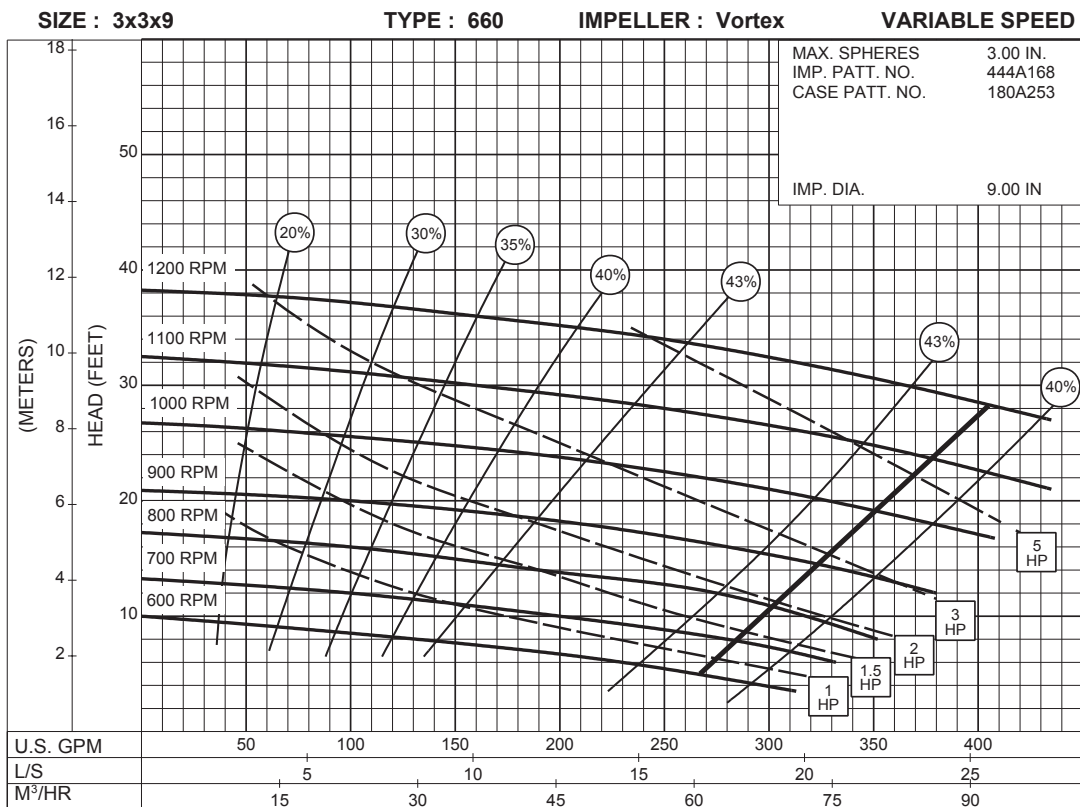
3 x 3 x 9 SERIES 660

ENCLOSED IMPELLER



**1800
TO
1200
RPM**

8PC-119972



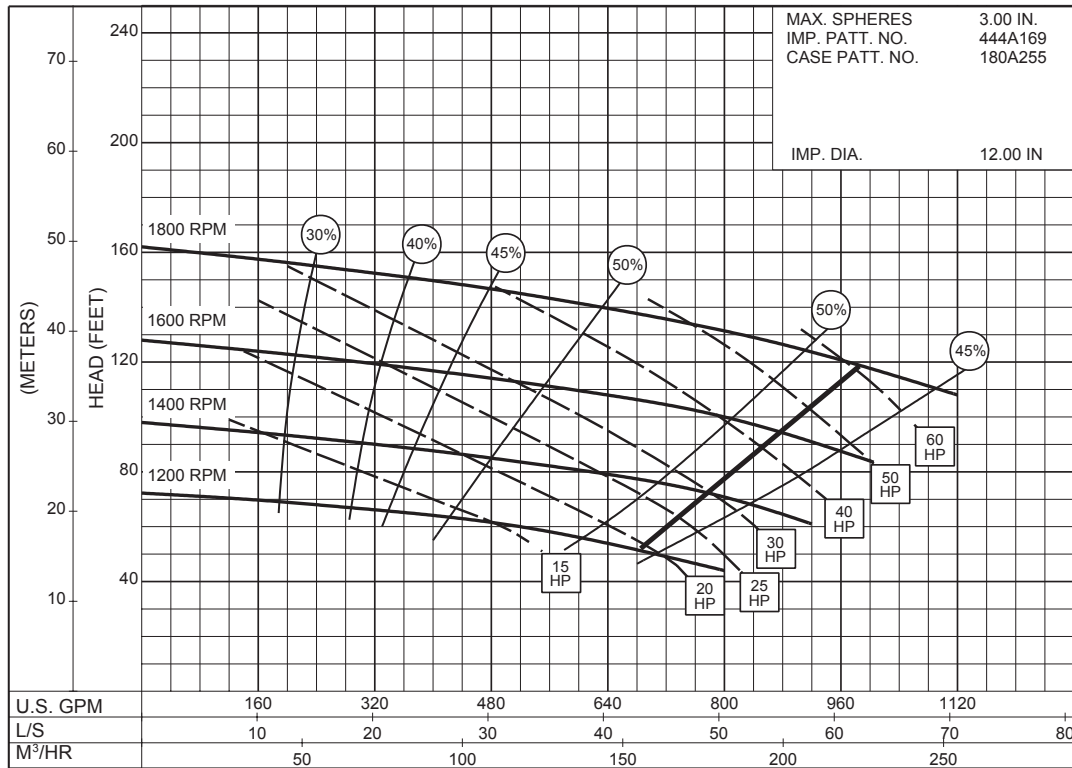
**1200
TO
600
RPM**

8PC-119973

3 x 3 x 12 SERIES 660

VORTEX IMPELLER

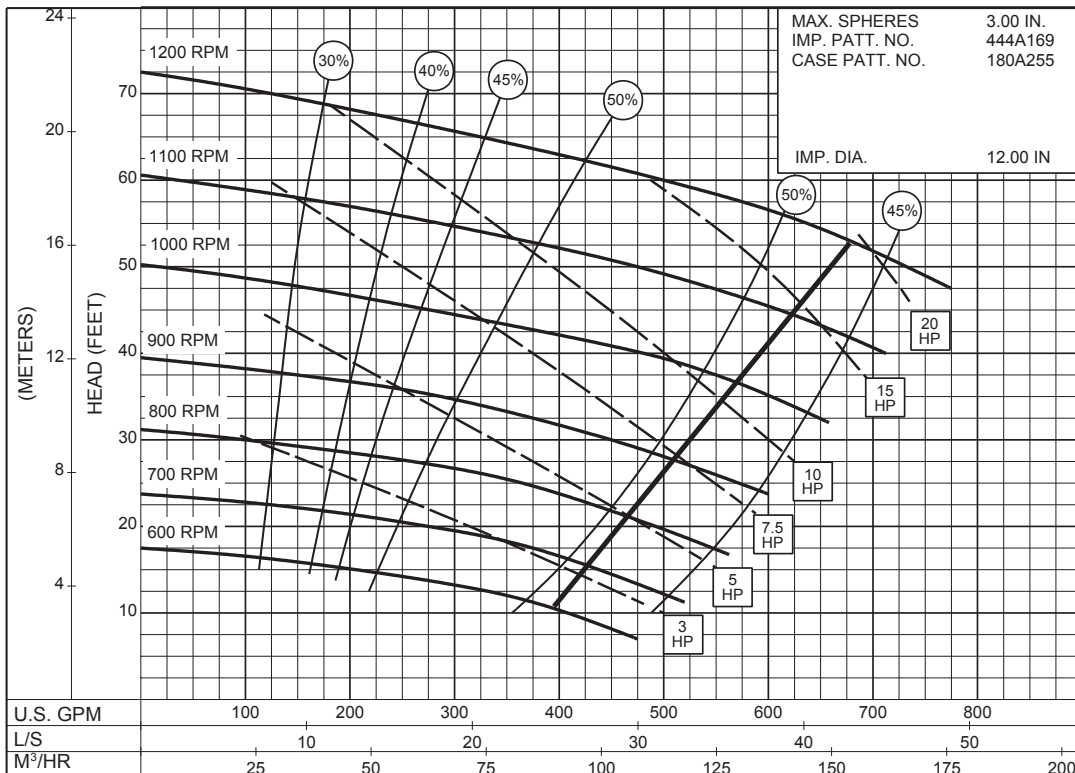
SIZE : 3x3x12 TYPE : 660 IMPELLER : Vortex VARIABLE SPEED



8PC-119977

**1800
TO
1200
RPM**

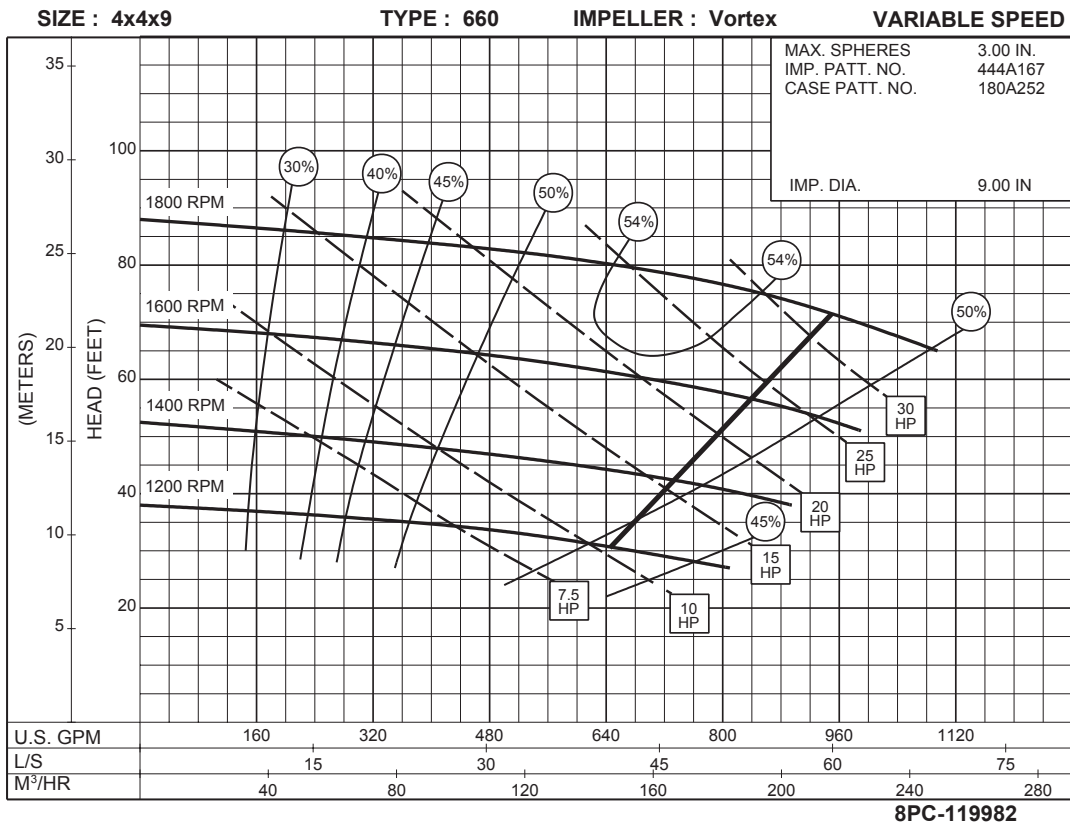
SIZE : 3x3x12 TYPE : 660 IMPELLER : Vortex VARIABLE SPEED



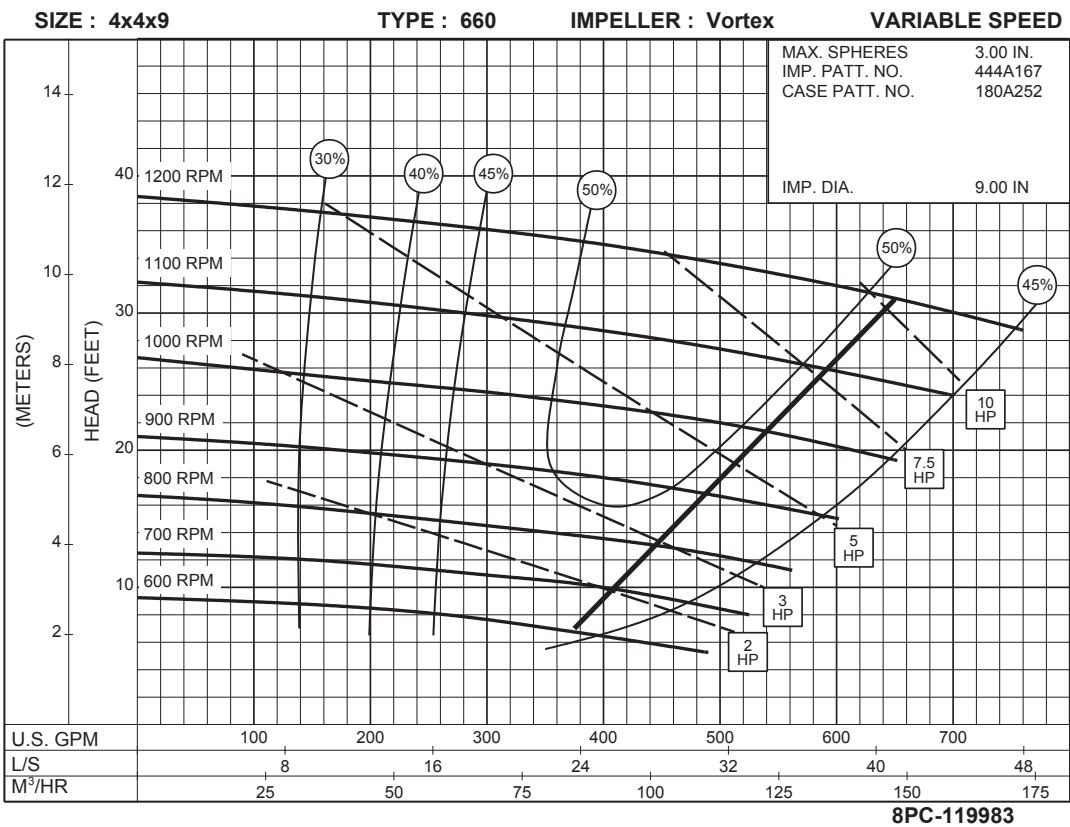
8PC-119978

**1200
TO
600
RPM**

4 x 4 x 9 SERIES 660 VORTEX IMPELLER



1800
TO
1200
RPM

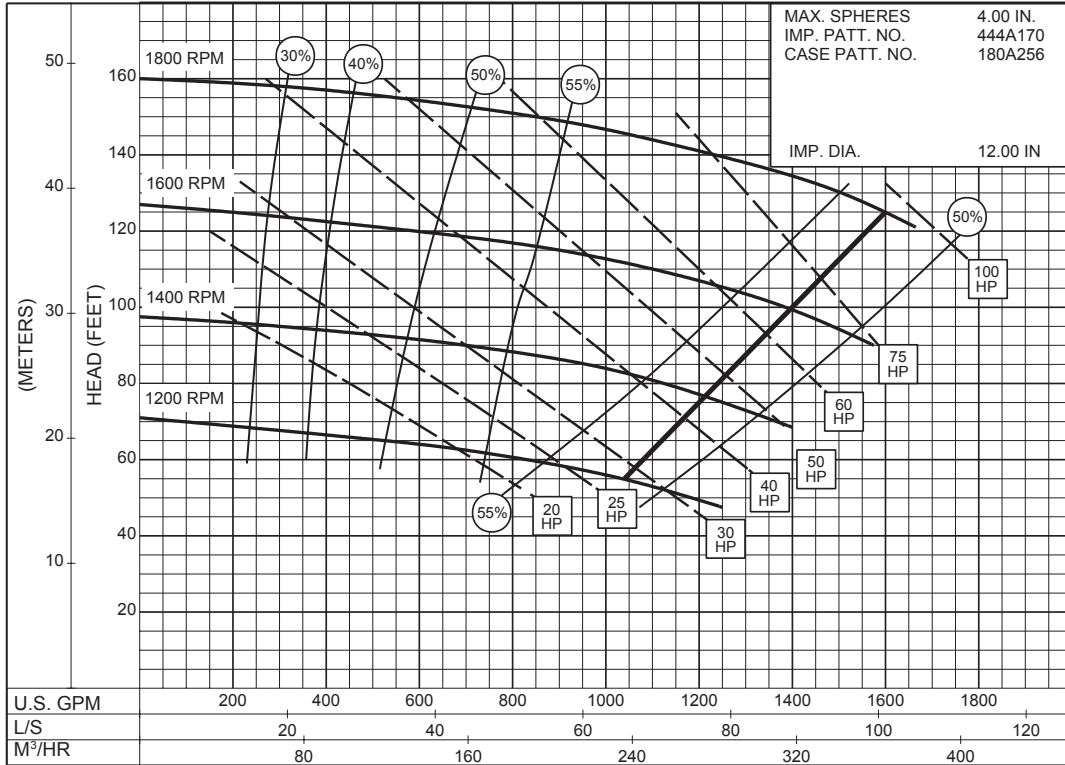


1200
TO
600
RPM

4 x 4 x 12 SERIES 660

VORTEX IMPELLER

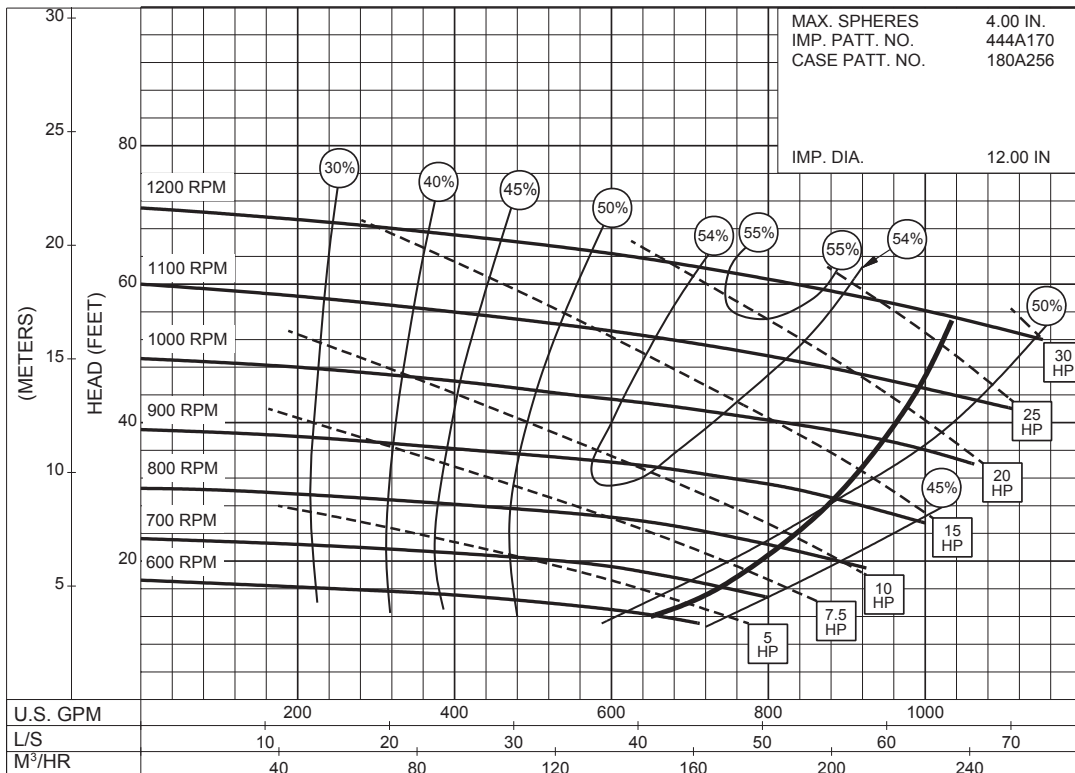
SIZE : 4x4x12 TYPE : 660 IMPELLER : Vortex VARIABLE SPEED



8PC-119987

**1800
TO
1200
RPM**

SIZE : 4x4x12 TYPE : 660 IMPELLER : Vortex VARIABLE SPEED

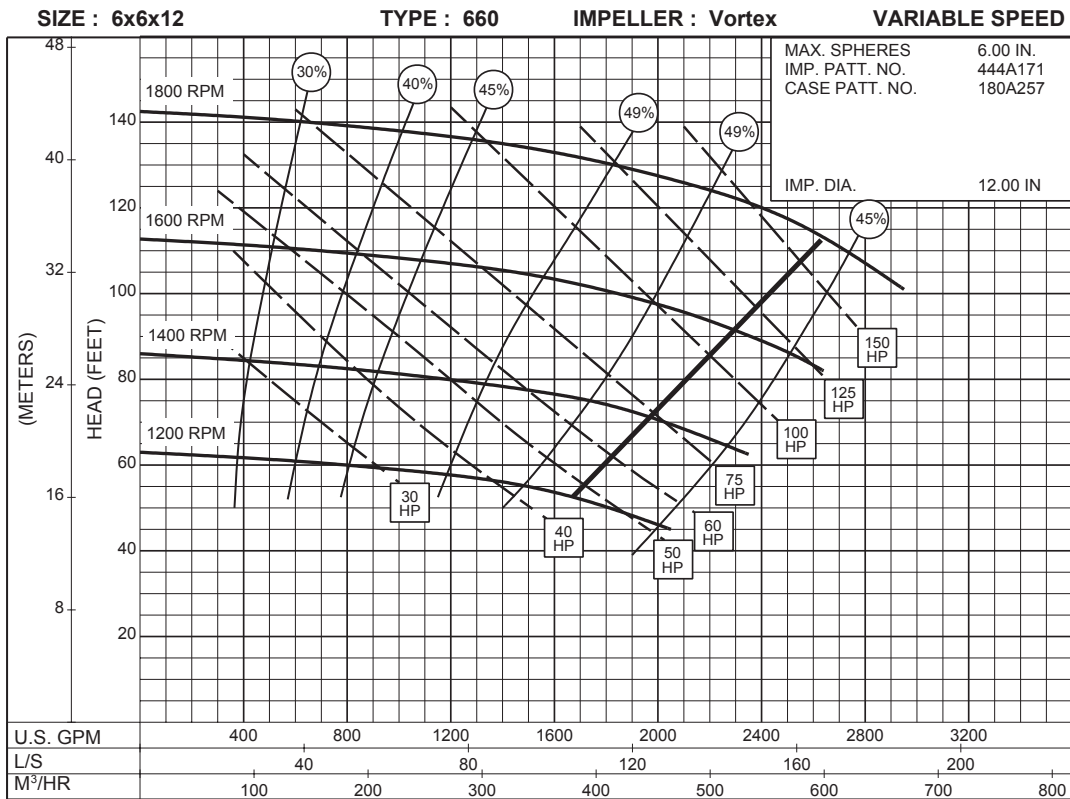


8PC-119988

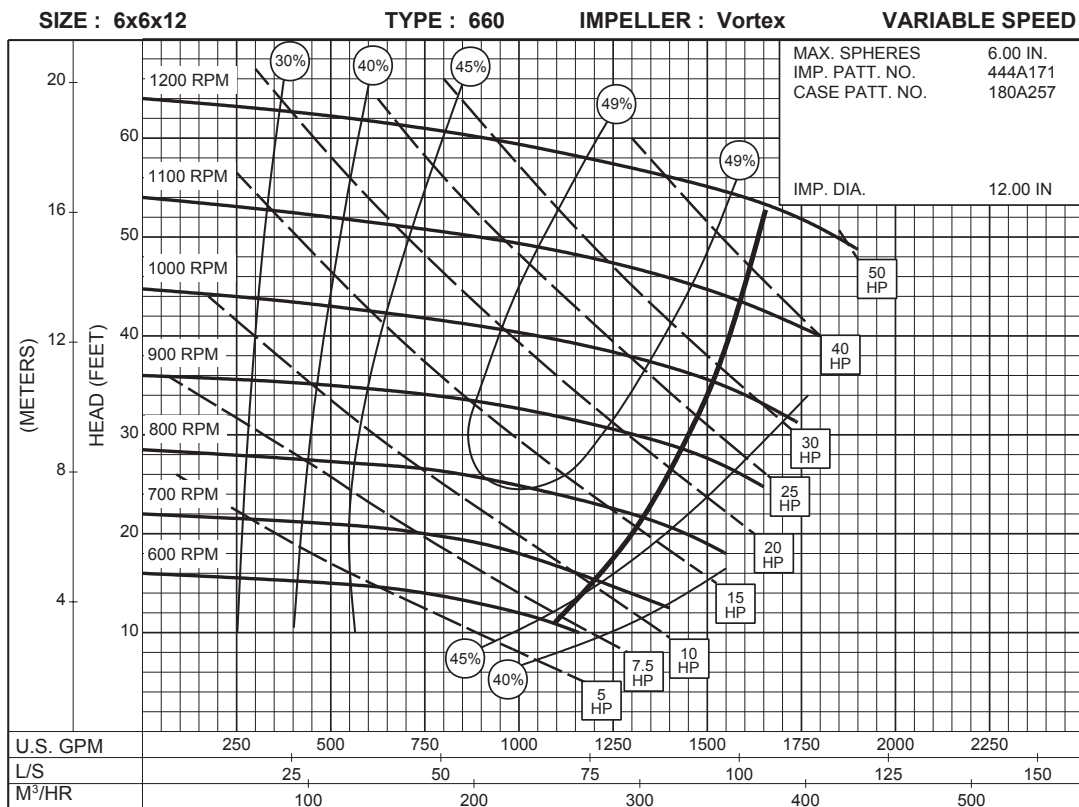
**1200
TO
600
RPM**

6 x 6 x 12 SERIES 660

VORTEX IMPELLER



**1800
TO
1200
RPM**

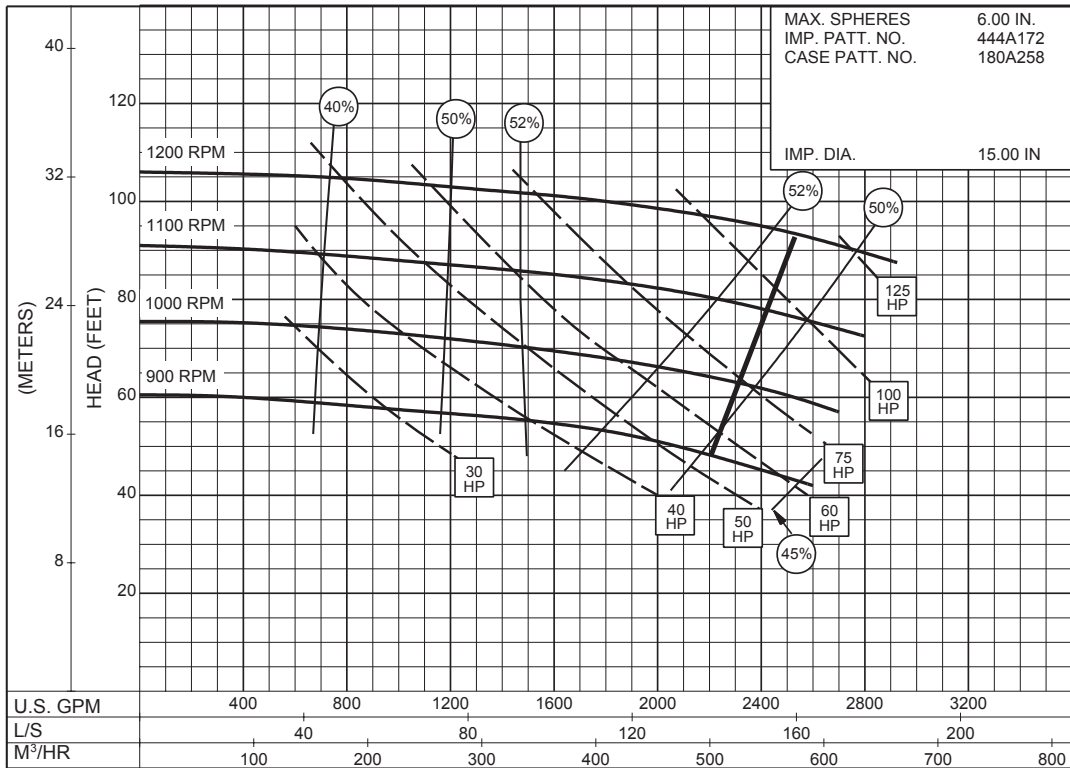


**1200
TO
600
RPM**

6 x 6 x 15 SERIES 660

VORTEX IMPELLER

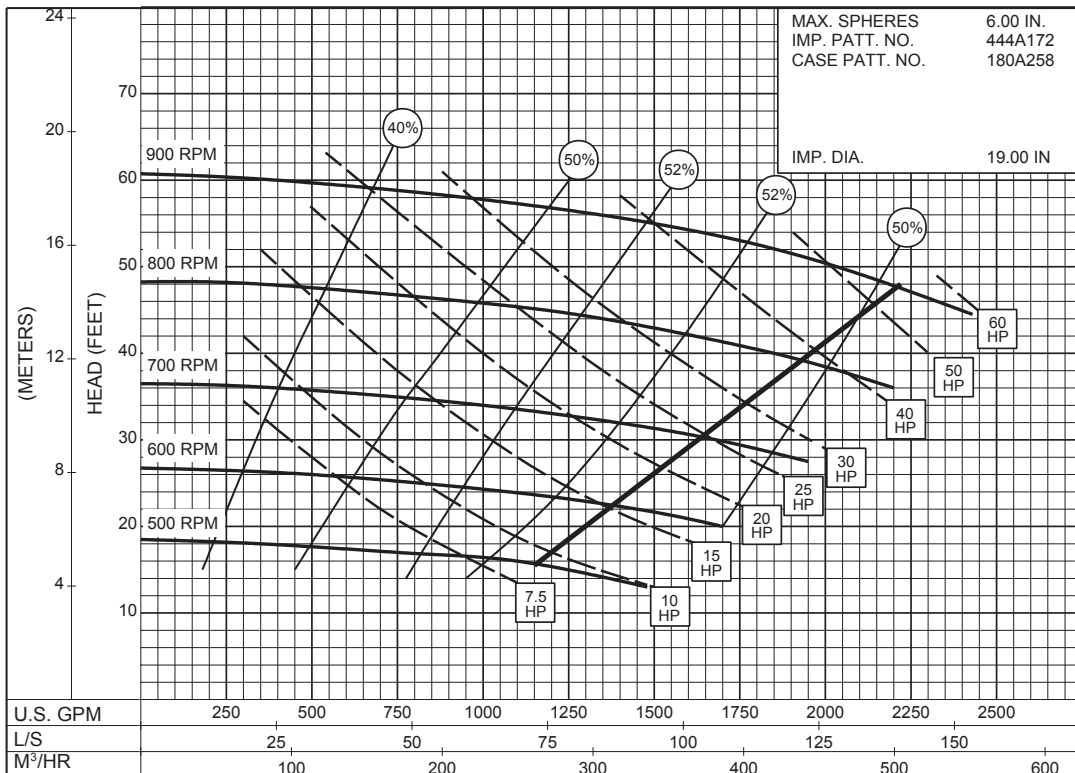
SIZE : 6x6x15 TYPE : 660 IMPELLER : Vortex VARIABLE SPEED



8PC-119997

1200
TO
900
RPM

SIZE : 6x6x15 TYPE : 660 IMPELLER : Vortex VARIABLE SPEED



8PC-119998

900
TO
500
RPM